

RC 2012
 THIS PLAN HAS BEEN PREPARED IN ACCORDANCE WITH THE PRESCRIPTIVE ENERGY CODE REQUIREMENTS MANUAL CALCULATIONS BY OTHERS.

RESIDENCE IS NOT LOCATED IN A WINDBORNE DERING PROTECTION REGION

THERMAL COMPONENT CRITERIA (U-FACTOR AND R-VALUE)

ITEM	U-FACTOR	R-VALUE	U-FACTOR	R-VALUE
CEILING	0.10	10.0	0.10	10.0
WALL	0.15	6.7	0.15	6.7
FLOOR	0.10	10.0	0.10	10.0
DOOR	0.30	3.3	0.30	3.3
WINDOW	0.30	3.3	0.30	3.3

THIS SET OF 3 PAPERS IS REQUIRED FOR BAIT INSULATION AT EXTERIOR WALLS OR USE SPICED FOAM INSULATION IF ACCEPTABLE.

NOTES

- CONTRACTOR SHALL VERIFY WINDOW DOOR PROFILES MEETING ENERGY CODE REQUIREMENTS. VERIFY U-FACTOR R-VALUE BASED ON AS MANUFACTURED. VERIFY U-FACTOR R-VALUE BASED ON AS MANUFACTURED. VERIFY U-FACTOR R-VALUE BASED ON AS MANUFACTURED.
- CONTRACTOR SHALL VERIFY WINDOW DOOR PROFILES MEETING ENERGY CODE REQUIREMENTS. VERIFY U-FACTOR R-VALUE BASED ON AS MANUFACTURED. VERIFY U-FACTOR R-VALUE BASED ON AS MANUFACTURED.
- CONTRACTOR SHALL VERIFY WINDOW DOOR PROFILES MEETING ENERGY CODE REQUIREMENTS. VERIFY U-FACTOR R-VALUE BASED ON AS MANUFACTURED. VERIFY U-FACTOR R-VALUE BASED ON AS MANUFACTURED.
- CONTRACTOR SHALL VERIFY WINDOW DOOR PROFILES MEETING ENERGY CODE REQUIREMENTS. VERIFY U-FACTOR R-VALUE BASED ON AS MANUFACTURED. VERIFY U-FACTOR R-VALUE BASED ON AS MANUFACTURED.
- CONTRACTOR SHALL VERIFY WINDOW DOOR PROFILES MEETING ENERGY CODE REQUIREMENTS. VERIFY U-FACTOR R-VALUE BASED ON AS MANUFACTURED. VERIFY U-FACTOR R-VALUE BASED ON AS MANUFACTURED.
- CONTRACTOR SHALL VERIFY WINDOW DOOR PROFILES MEETING ENERGY CODE REQUIREMENTS. VERIFY U-FACTOR R-VALUE BASED ON AS MANUFACTURED. VERIFY U-FACTOR R-VALUE BASED ON AS MANUFACTURED.
- CONTRACTOR SHALL VERIFY WINDOW DOOR PROFILES MEETING ENERGY CODE REQUIREMENTS. VERIFY U-FACTOR R-VALUE BASED ON AS MANUFACTURED. VERIFY U-FACTOR R-VALUE BASED ON AS MANUFACTURED.
- CONTRACTOR SHALL VERIFY WINDOW DOOR PROFILES MEETING ENERGY CODE REQUIREMENTS. VERIFY U-FACTOR R-VALUE BASED ON AS MANUFACTURED. VERIFY U-FACTOR R-VALUE BASED ON AS MANUFACTURED.

WINDOW SCHEDULE

MARK	DESCRIPTION	U-F
AA	3070 VINYL SH	0.10
BB	3040 VINYL SH	0.10
CC	FR. 2050 VINYL CASEMENT	0.10
DD	2040 VINYL SH	0.10

DOOR SCHEDULE

MARK	HEIGHT	THICK	DESCRIPTION
1	3'-0"	1 3/4"	RASG ELEVATION
2	3'-0"	1 3/4"	RASG PANEL INTERIOR
3	2'-4"	1 3/4"	RASG PANEL INTERIOR
4	1'-6"	1 3/4"	RASG PANEL POCKET
5	3'-0"	1 3/4"	RASG PANEL INTERIOR
6	3'-0"	1 3/4"	LIT. EXTERIOR
7	2'-8"	1 3/4"	RASG PANEL EXTERIOR
8	16'-0"	1 3/4"	FR. 3080 RASG PANEL EXT.

FLOOR PLAN

CHAS & JENNIFER ARNONE
 LOT 15-A, SO. C. THE ANCHORAGE S/D.
 NEW ORLEANS PARISH, LA.

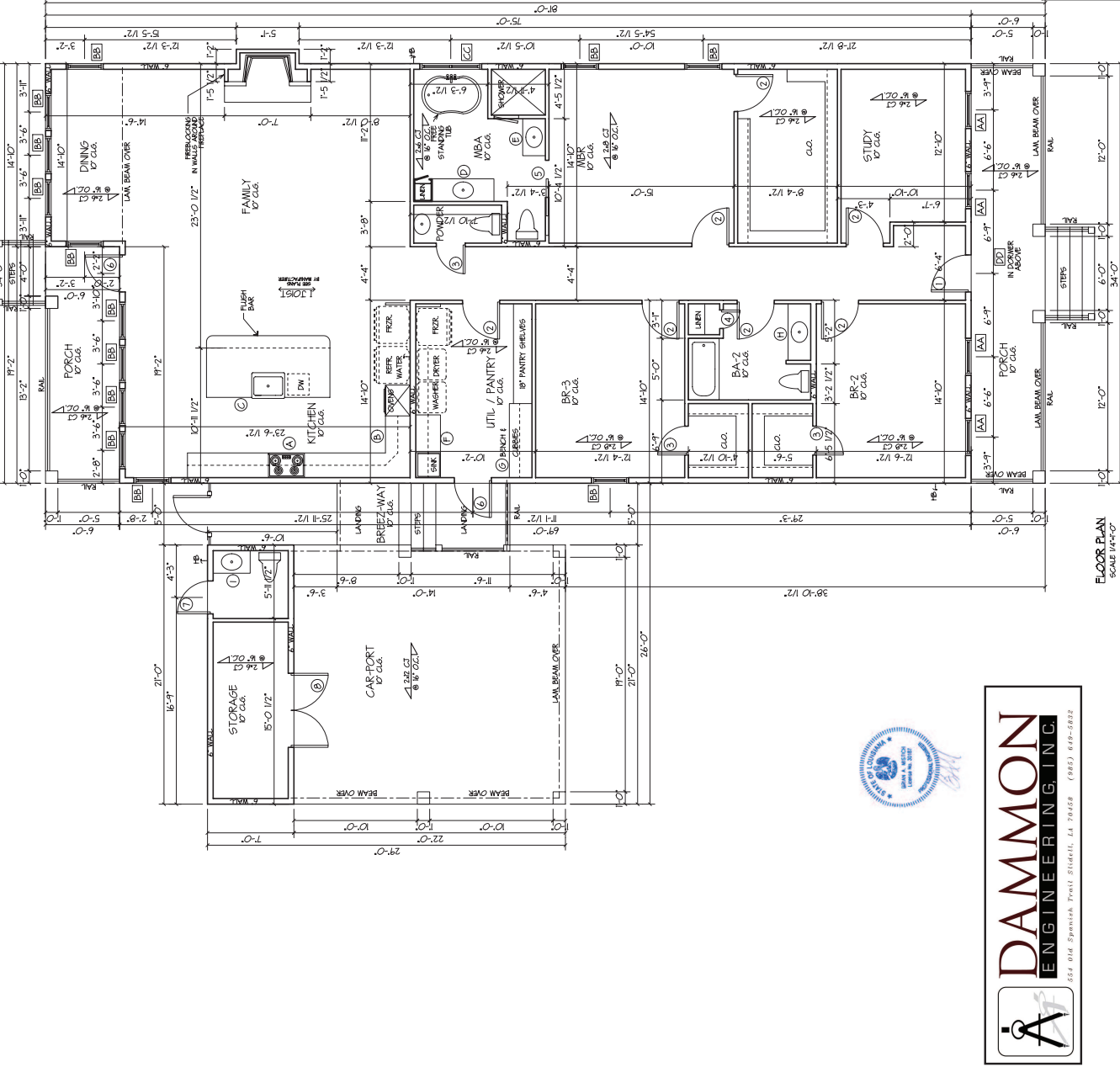
DesignTech
 Residential Planners, Inc.
 S. Tammany Parish, LA.
 COVINGTON 70427-7711 PHONE: 985-897-6000

CODE	AREA	U.F.
AS	2485	3483
CS	7495	3483

11170

AREA

LIVING AREA	2485
CARPORIT / STORAGE	679
PORCHES	319
TOTAL AREA UNDER F.P.M.	3483



DAMMON ENGINEERING, INC.
 554 Old Spanish Trail Slidell, LA 70458 (882) 419-5822