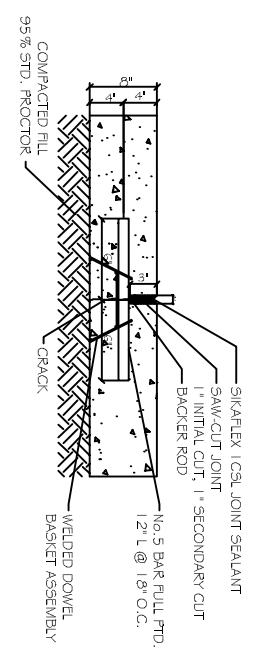


- DRAINAGE PLAN NOTES:**
- ELEVATIONS SHOWN ARE M.S.L.
  - FIELD VERIFY ALL ELEVATIONS AND DRAINAGE SYSTEM PLACEMENT PRIOR TO START OF WORK.

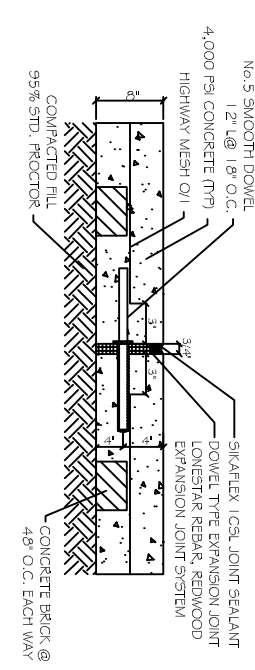
**PAVING NOTES:**

- ALL NEW CONCRETE SHALL HAVE A MINIMUM COMPRESSIVE STRENGTH OF 4,000 PSI AT 28 DAYS AND A MINIMUM THICKNESS OF 5" CONCRETE MIX SHALL BE IN ACCORDANCE WITH THE LATEST REVISION OF ASTM C-150 TYPE 1.
- CONCRETE PAVING THICKNESS SHALL VARY AS FOLLOWS:
  - DRIVEWAYS = 8" THICKNESS
  - ALL REINFORCING STEEL SHALL MEET ASTM A615 (GRADE 60).
  - ALL REINFORCING STEEL SHALL BE SECURELY SUPPORTED TO PREVENT BOTH VERTICAL AND HORIZONTAL MOVEMENT DURING CONCRETE PLACEMENT. ALL CONTROL AND EXPANSION JOINTS SHALL BE LOCATED AND INSTALLED AS SHOWN ON THE PAVING PLAN AND IN ACCORDANCE WITH THE MANUFACTURER'S RECOMMENDATIONS.
  - ALL SUB GRADE FILL SHALL BE SELECT GRANULAR MATERIAL COMPACTED TO 95% STANDARD PROCTOR DENSITY IN A MAXIMUM OF 6" LIFTS.
  - CONTRACTOR SHALL CONTACT THEIR REGULATOR DEPARTMENT OF ENGINEERING PRIOR TO CONDUCTING ANY WORK.
  - ANY WORK WITHIN THE ROADWAY OR ADJACENT TO THE ROADWAY CAUSING AN INTERFERENCE TO VEHICULAR TRAFFIC MUST CONFORM TO THE REQUIREMENTS SET FORTH BY THE UNIFORM MANUAL OF TRAFFIC CONTROL DEVICES OF THE STATE OF LOUISIANA. THE CONTRACTOR MUST FURNISH ALL NECESSARY TRAFFIC SIGNS AND/OR BARRICADES AND MAINTAIN THEM DURING CONSTRUCTION ACTIVITY.

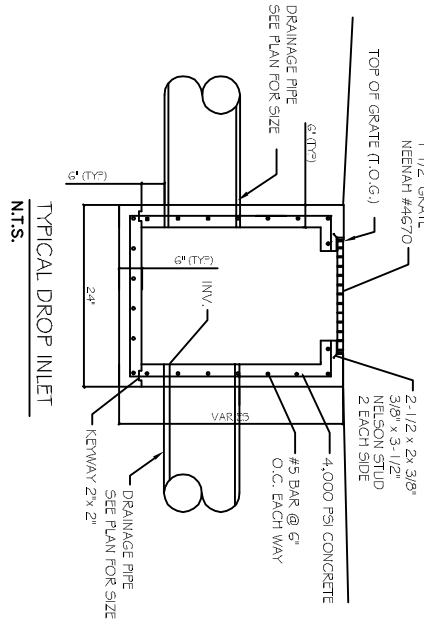
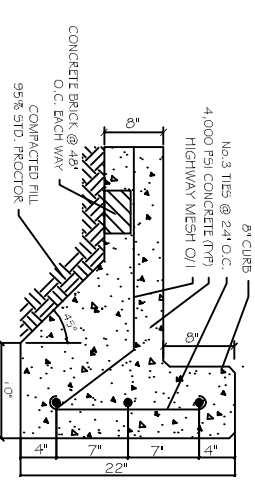
**CONTROL JOINT DETAIL**  
N.T.S.



**EXPANSION JOINT DETAIL**  
N.T.S.



**TYPICAL CURB DETAIL**  
N.T.S.



**TYPICAL DROP INLET**  
N.T.S.

**LEGEND**

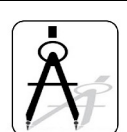
- PROPERTY LINE
- - - CONTROL JT.
- - - EXPANSION JT.
- ⊙ 0.00 - TOP OF GRADE ELEVATION
- ⊙ 0.00 - INVERT ELEVATION
- 0.00 - NEW ELEVATION
- 0.00 - TOP OF CURB
- 0.00 - BOTTOM OF CURB

**B. & W. TRUCKING INC.**

130 INDUSTRIAL PARK  
SUDELL, LA  
70458

JOB No: 2146    DATE: 08-01-2012

DRAWN BY: BSN    CHECKED BY: BSN



**DAMMON ENGINEERING, INC.**  
Architects & Engineers

CHIEF ENGINEER: EMMETT DAMMON, P.E.  
CHIEF ARCHITECT: ROBERT WILTSE  
654 OLD SPANISH TRAIL  
SUDELL, LA 70459

dammoneng@earthlink.net  
PHONE: 985-649-5032  
FAX: 985-641-6950

FLOOR PLAN

SHEET No: 1 OF 1

C-1

REVISIONS		DATE
#	DESCRIPTION	