

**DAMMON**  
ENGINEERING, INC.

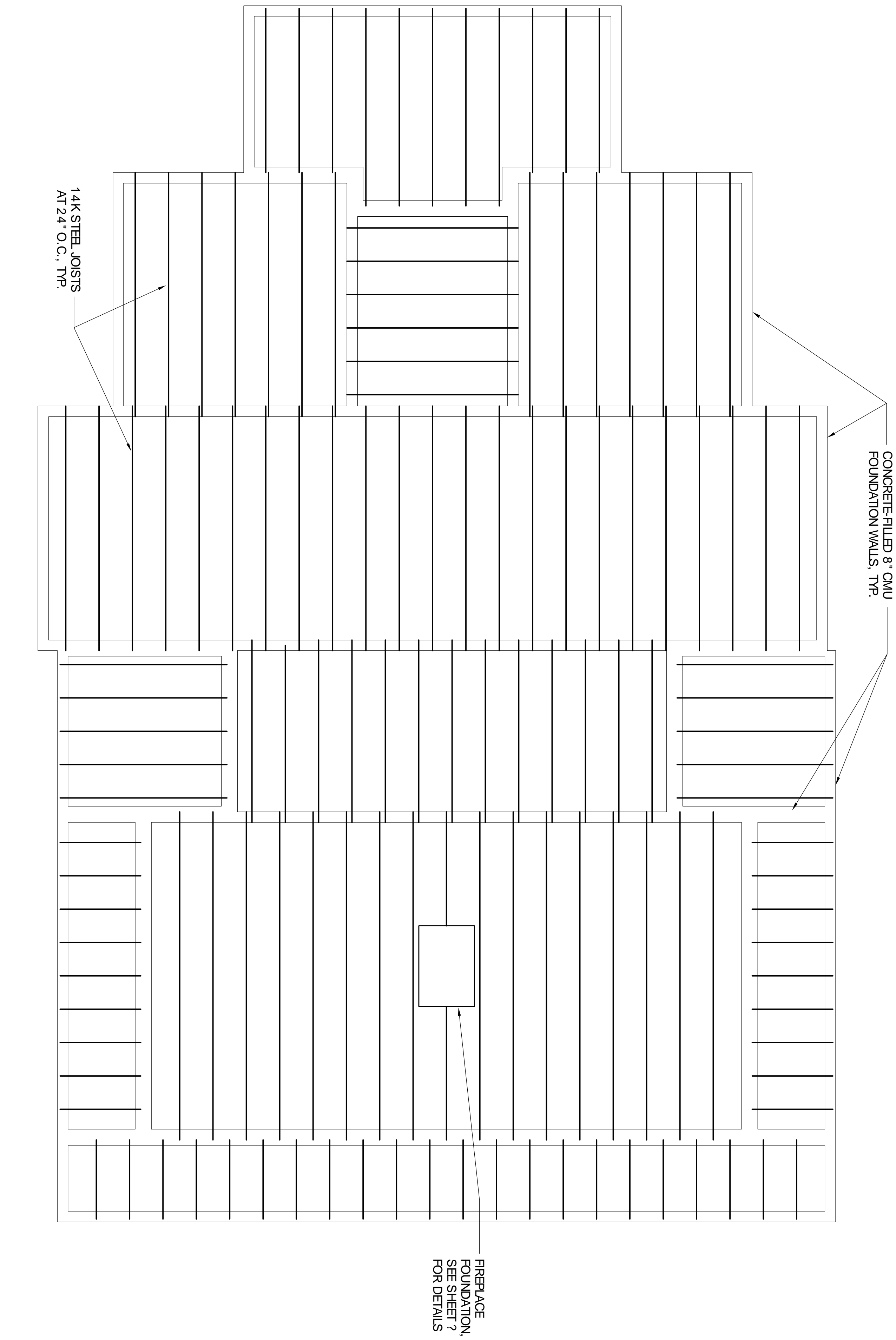
CHIEF ENGINEER  
EMMETT  
DAMMON, P.E.

CHIEF ARCHITECT  
ROBERT  
MILTSE

1095 FLORIDA AVENUE  
SUDDEN, LA. 70458  
OFFICE: 985-649-5832  
FAX: 985-641-5950

WEBSITE:  
[WWW.DAMMONENGINEERING.COM](http://WWW.DAMMONENGINEERING.COM)  
EMAIL:  
[DAMMONENG@BLSOUTH.NET](mailto:DAMMONENG@BLSOUTH.NET)

ARCHITECTURE  
ENGINEERING  
STUDIES  
PLANNING  
INVESTIGATION  
EXPERT WITNESS



**FLOOR LEVEL FOUNDATION FRAMING PLAN**  
SCALE: 1/4"=1'

REV:

SCALE: AS NOTED

JOB#: 1990

DATE: 08-25-08

SHEET

S-2

OF