

UPPER ELECTRICAL PLAN  
SCALE = 1/4" = 1'-0"

ELECTRICAL	COUNT	SYMBOL
CLG. FAN GLOBE 1 SPARE BR.S	2	
CLG. FAN W/ LT. KIT	1	
CAN LT. 6 INCH	29	
CO2 DETECTOR	2	
HEATER VENT LT.	2	
OUTLET	35	
OUTLET G.F.I.	8	
OUTLET W.P. GFI	1	
SMOKE DETECTOR	5	
SWITCH	16	
SWITCH 3 WAY	8	
SWITCH 4 WAY	4	
SWITCH TRIPPLE H.V.L.	2	
VENT LT.	1	
VANITY 2 BULB 3	2	
VANITY 3 BULB	3	

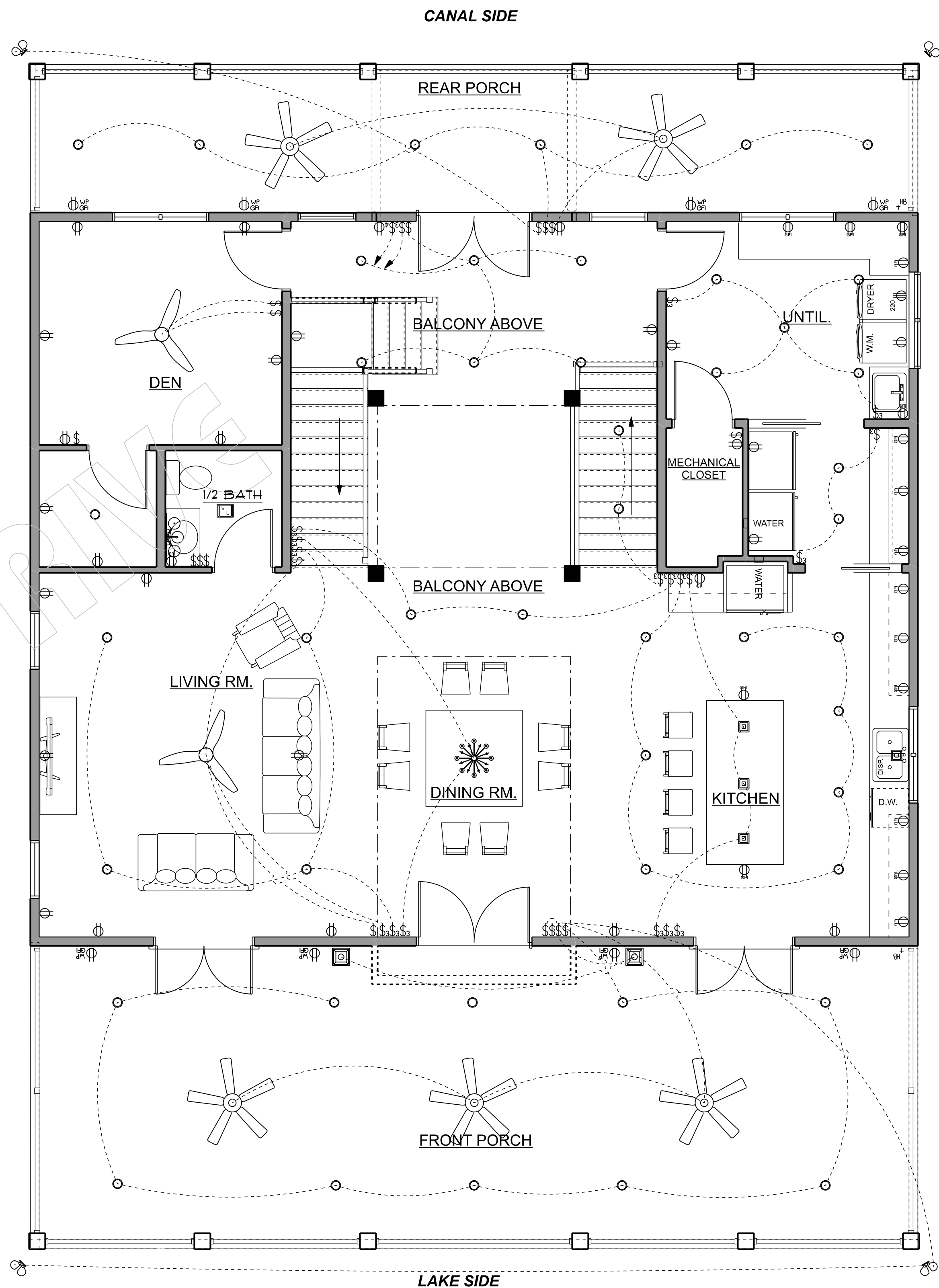
- THE ELECTRICAL INSTALLATION SHALL BE IN ACCORDANCE WITH THE APPLICABLE EDITION OF THE NATIONAL ELECTRIC CODE (NEC), APPLICABLE NFPA, NFPA, ANSI STANDARDS, THE NATIONAL ELECTRICAL SAFETY CODE, AND THE REQUIREMENTS OF ALL APPLICABLE FEDERAL, STATE, AND LOCAL ORDINANCES AND CODES.
- THE ELECTRICAL CONTRACTOR (EC) WILL COORDINATE THE ELECTRICAL SERVICE AND PIERING REQUIREMENTS WITH THE LOCAL UTILITY COMPANY. THE EC SHALL FURNISH AND/OR INSTALL ALL MATERIAL AND FURNISH ALL LABOR NECESSARY TO COMPLY WITH LOCAL UTILITY COMPANY REQUIREMENTS. THE EC WILL VERIFY AVAILABLE FAULT CURRENT WITH THE UTILITY COMPANY AND CONFIRM THAT ALL EQUIPMENT IS PROPERLY RATED. THE ELECTRICAL EQUIPMENT SHALL BE OF PROVEN DESIGN, MANUFACTURED AND TESTED BY A RECOGNIZED TESTING FACILITY, IN ACCORDANCE WITH MINIMUM REQUIREMENTS OF THE FOLLOWING: NEMA, IEEE, AND ANSI.
- THE EC WILL NOT SCALE FROM THE DRAWINGS FOR THE LOCATION, MOUNTING, AND ORIENTATION OF EQUIPMENT, BUT SHALL VERIFY THESE DIMENSIONS ON SITE PRIOR TO BEGINNING WORK. THE RATINGS AND CIRCUIT REQUIREMENTS OF EQUIPMENT BE OBTAINED FROM MANUFACTURER DATA. ANY DISCREPANCIES BETWEEN THE DRAWINGS AND EQUIPMENT LOCATIONS OR RATINGS SHALL BE REPORTED TO OWNER PRIOR TO BEGINNING WORK. THE EC SHALL COORDINATE THE INSTALLATION OF ELECTRICAL EQUIPMENT WITH OTHER TRADES TO ALLOW PROPER WORKING CLEARANCE AROUND EQUIPMENT. PER SECTION 10 AND 384 OF NEC. THE EC WILL COORDINATE THE LOCATION OF LIGHTING FIXTURES TO AVOID INTERFERENCE WITH MECHANICAL EQUIPMENT.
- SMOKE DETECTORS SHALL BE INSTALLED AT EACH LEVEL, IN EACH BEDROOM, OUTSIDE OR IN CLOSE PROXIMITY TO SLEEPING ROOMS.
- CARBON MONOXIDE DETECTORS AT LEAST ONE APPROVED CARBON MONOXIDE DETECTOR SHALL BE INSTALLED IN EACH AREA WITHIN OR GIVING ACCESS TO BEDROOMS. IT SHALL BE HARD-WIRED AND BATTERY BACKED UP.
- ALL OUTLETS SHALL BE APPROVED, INTERNAL TAMPER RESISTANT.
- GROUND-FAULT CIRCUIT-INTERUPTER PROTECTION (GFI) IN ALL 120V, SINGLE-PHASE, 15- AND 20-AMPERE RECEPTACLES INSTALLED IN: BATHROOMS, GARAGES, OUTDOORS, OR ALL SPACES OR BELOW GRADE, UNFINISHED BASEMENTS, KITCHENS-WHERE THE RECEPTACLES ARE INSTALLED TO SERVE COUNTER TOP SURFACES, LAUNDRY, UTILITY & JET BAR SINKS-WHERE THE RECEPTACLES ARE INSTALLED WITHIN 4 FT OF THE OUTSIDE EDGE OF THE SINK, & BOAT HOUSES.
- ARC-FAULT CIRCUIT INTERRUPTER, ALL 120V, SINGLE PHASE, 15- AND 20-AMPERE BRANCH CIRCUITS SUPPLYING OUTLETS INSTALLED IN DUELING UNIT BEDROOMS AND GENERAL LIGHTING THROUGH OUT, SHALL BE PROTECTED BY A LISTED ARC-FAULT CIRCUIT INTERRUPTER, COMBINATION TYPE, INSTALLED TO PROVIDE PROTECTION OF THE BRANCH CIRCUIT.
- IN DAMP OR WET LOCATIONS, BOXES, CONDUIT BODIES AND FITTINGS SHALL BE PLACED OR EQUIPPED SO AS TO PREVENT MOISTURE FROM ENTERING OR ACCUMULATING WITHIN THE BOX, CONDUIT BODY, OR FITTING. BOXES, CONDUIT BODIES, AND FITTINGS INSTALLED IN WET LOCATIONS SHALL BE LISTED FOR USE IN WET LOCATIONS.
- WORK SPACE AND CLEARANCES: EQUIPMENT, PIPING & DUCTS FOREBORN TO THE ELECTRICAL INSTALLATION SHALL NOT BE PLACED IN ACCESS SPACE EXTENDING FROM THE FLOOR TO A HEIGHT OF 6 FT. ABOVE THE PANEL BOARD ENCLOSURE, OR TO THE CEILING, WHICHEVER IS LOWER. THE WORKING SPACE SHALL BE 4 FT. WIDE, 3 FT. DEEP AND BE CLEAR & UNOBSTRUCTED FROM THE FLOOR TO A HEIGHT OF 6.5 FT. THE WORKING SPACE SHALL NOT BE DESIGNATED FOR STORAGE. PANEL BOARDS, SERVICE EQUIPMENT & SIMILAR ENCLOSURES SHALL NOT BE LOCATED IN BATHROOMS, TOILET ROOMS, CLOTHES CLOSETS OR OVER THE STEPS OF A STAIRWAY. SUCH WORK SPACES SHALL BE PROVIDED BY ARTIFICIAL LIGHTING WHERE LOCATED INDOORS.

GENERAL ELECTRICAL NOTES

ELECTRICAL LEGEND		
ELECTRICAL	COUNT	SYMBOL
OUTDOOR FAN	5	
CLG. FAN W/ LT. KIT	2	
CAN LT. 6 INCH	46	
CLG. LT. DINING	1	
ISLAND PENDANT	4	
EXTERIOR LT NOLA	2	
SPOTLIGHT DBLE	4	
DISPOSAL	1	
FLOOR OUTLET DUPLEX	1	
OUTLET	25	
OUTLET 220	1	
OUTLET G.F.I.	18	
OUTLET W.P. GFI	8	
SWITCH	16	
SWITCH 3 WAY	19	
SWITCH 4 WAY	1	
VENT LT.	1	
VANITY 3 BULB 1	1	

- (14) 1x4 FLOURESCENT LT. FIXTURES
- (14) OUTLETS (1) PER LT. FIXTURE
- MAX. OF (3) FIXTURES PER SWITCH
- (LOCATION OF SAID FIXTURES BY OWNER)

FOUNDATION ELECTRICAL ALLOWANCE



LOWER ELECTRICAL PLAN  
SCALE = 1/4" = 1'-0"

LIVING AREA DOWN	= 1748
LIVING AREA UP	= 1475
TOTAL LIVING AREA	= 3223
FRONT PORCH	= 721
REAR PORCH	= 353
UPPER PORCH	= 60
TOTAL AREA U.B.	= 4357

NOTE: ALTHOUGH EVERY EFFORT HAS BEEN MADE IN THESE DRAWINGS, THE CONTRACTOR IS RESPONSIBLE FOR CHECKING AND OR FOR ACCURACY AND OR CONSTRUCTION BEGINS.

NOTE: THIS DRAWING CONTAINS VALUABLE SECRET INFORMATION OF CLARKE'S DESIGN SERVICE, LLC. NO USE OF THE DRAWING OR ANY OF ITS CONTENTS IS PERMITTED WITHOUT THE WRITTEN PERMISSION OF CLARKE'S DESIGN SERVICE, LLC. (C) COPYRIGHT, 2011, AN UNPUBLISHED WORK BY CLARKE'S DESIGN SERVICE, LLC. ALL RIGHTS RESERVED.



CLARKE'S DESIGN SERVICE, LLC.  
(985) 641-0531 WWW.CLARKEDESIGN.COM (985) 641-0531



MIKE EDWARDS  
258 LAKEVIEW DRIVE  
ST. TAMMANY PARISH, LA.  
DATE: 08-20-18  
CODE: E3 - 3223 - 4357 - 6623  
INDEX

SHEET DESCRIPTION:  
LOWER ELECTRICAL  
UPPER ELECTRICAL