

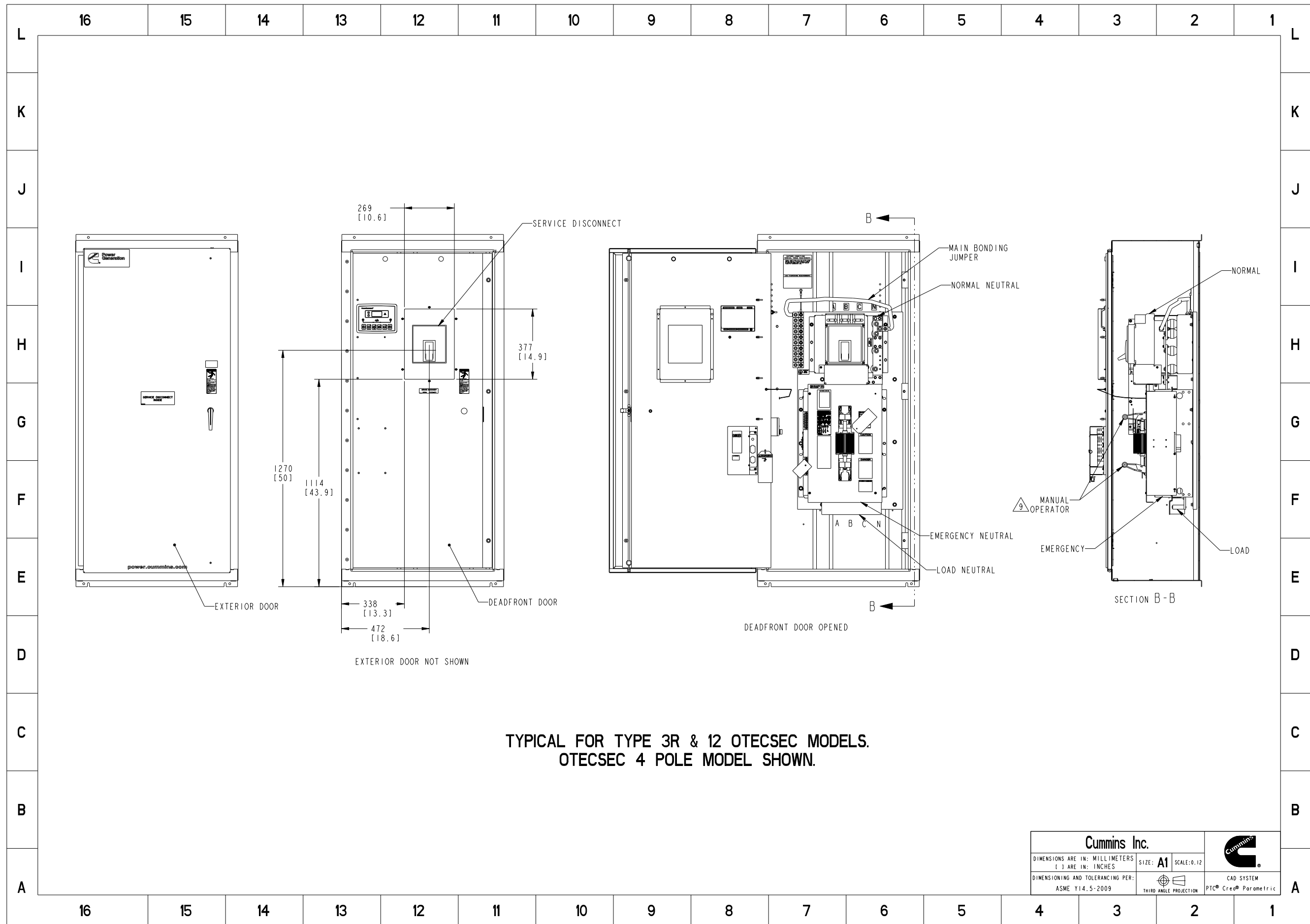
NOTES:

1. SUITABLE ONLY FOR USE AS SERVICE EQUIPMENT NORMAL SOURCE ONLY. AN ADDITIONAL DISCONNECT SHALL BE READILY AVAILABLE FOR THE ALTERNATE SOURCE, UNLESS THE ALTERNATE SOURCE IS AN ACCESSIBLE GENERATOR AND CAN BE READILY SHUT DOWN.
2. APPROX WEIGHT: TYPE 1; 236 KG [520 LBS]
TYPE 3R,12; 272 KG [600 LBS]
3. ALL DIMENSIONS IN [] ARE IN INCHES.
4. TYPE 1, 3R OR 12 WALL MOUNTED ENCLOSURE.
TYPE 1 - WITHOUT SEAL GASKET ON THE DOOR AND DRAIN HOLES
TYPE 3R - DUAL DOOR WITH SEAL GASKET OUTER DOOR AND DRAIN HOLES
TYPE 12 - DUAL DOOR WITH SEAL GASKET OUTER DOOR AND WITHOUT DRAIN HOLES
5. LUG CAPACITY
UTILITY CIRCUIT BREAKER - 3/0-500 MCM (3) CU/AL PER PHASE
EMERGENCY, LOAD AND NEUTRAL - 250-500 MCM (2) CU/AL PER PHASE
GROUND - 6-350 MCM (1) CU/AL
6. USE SEPARATE CONDUITS FOR CONTROL WIRING & POWER WIRING. DO NOT COMBINE.
7. SHADED AREA INDICATES WIRING & CABLE ENTRANCE AREA. DO NOT INSTALL OUTSIDE OF SHADED AREA.
8. WIRE BENDING SPACE CONFORMS TO NATIONAL ELECTRIC CODE (NFPA70).
9. MANUAL OPERATOR SHALL ONLY BE USED WHEN THE POWER IS DISCONNECTED FROM UTILITY AND GENERATOR PRIOR TO MOVEMENT OF THE OPERATOR.
10. REFER TO THE NATIONAL ELECTRIC CODE FOR MINIMUM CLEAR SPACE IN FRONT OF THIS ENCLOSURE.
11. ALL DIMENSIONS ARE REFERENCE, UNLESS SPECIFICALLY TOLERANCED.
12. OTEC OUTLINE (300-600A SERVICE ENTRANCE), SPEC B.

ALL DIMENSIONS ARE TYPICAL FOR 300-600A OTECSEC MODEL WITH TYPE 1, 3R, AND 12 CABINET
SEE SHEET 2 FOR MORE DETAIL TYPICAL TYPE 1 CABINET
SEE SHEET 3 FOR MORE DETAIL TYPICAL TYPE 3R & 12 CABINET

MODEL/PLATFORM: OTECSEC 300-600A	THIS PART IS SIMILAR TO: 0500-4611		
UNLESS OTHERWISE SPECIFIED THE FOLLOWING SHALL APPLY			
DIMENSIONAL TOLERANCES:		X ± 1.5	ANG. TOL.: ± 2°
HOLE SIZE 0.00-4.99		.XX ± 0.38	
TOL. +0.15/-0.08		HOLE SIZE 5.00-9.99	HOLE SIZE 10.00-17.49
TOL. +0.20/-0.10		TOL. +0.25/-0.13	HOLE SIZE 17.50-24.99
TOL. +0.30/-0.13		TOL. +0.30/-0.13	
Cummins Inc.			
DIMENSIONS ARE IN: MILLIMETERS		SIZE: A1	SCALE: 0.12
[] ARE IN: INCHES		THIRD ANGLE PROJECTION	
DIMENSIONING AND TOLERANCING PER: ASME Y14.5-2009		CAD SYSTEM: PTC® Creo® Parametric	

Document Generated: 14SEP2020 14:28 GMT



Document Generated: 14SEP2020 14:28 GMT