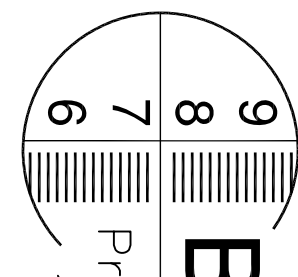
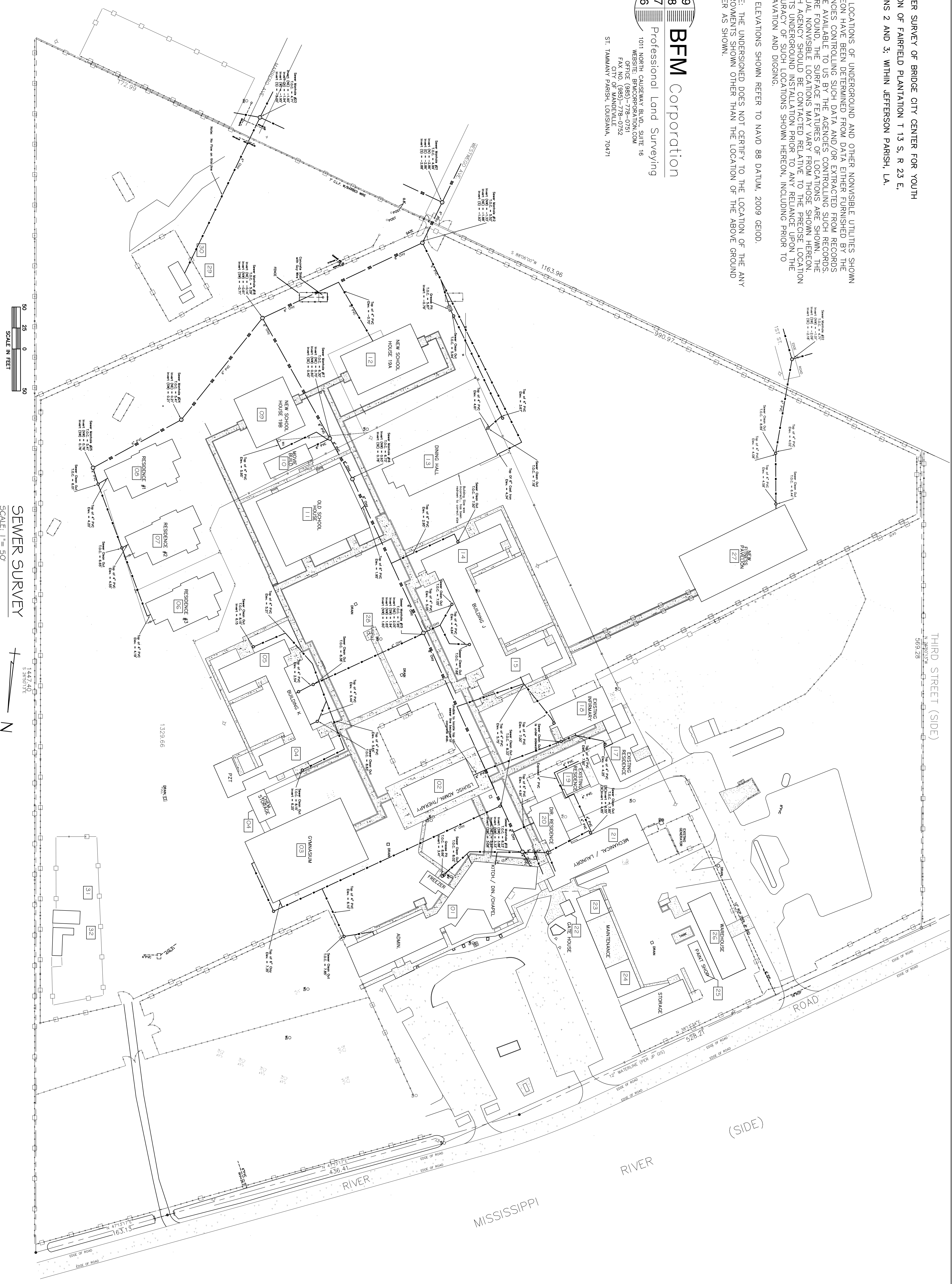


A SEWER SURVEY OF BRIDGE CITY CENTER FOR YOUTH  
 PORTION OF FAIRFIELD PLANTATION T 13 S, R 23 E,  
 SECTIONS 2 AND 3, WITHIN JEFFERSON PARISH, LA.

1. THE LOCATIONS OF UNDERGROUND AND OTHER NONVISIBLE UTILITIES SHOWN HEREON HAVE BEEN DETERMINED FROM DATA EITHER FURNISHED BY THE AGENCIES CONTROLLING SUCH DATA AND/OR EXTRACTED FROM RECORDS MADE AVAILABLE TO US BY THE AGENCIES CONTROLLING SUCH RECORDS. WHERE FOUND, THE SURFACE FEATURES OF LOCATIONS ARE SHOWN. THE ACTUAL NONVISIBLE LOCATIONS MAY VARY FROM THOSE SHOWN HEREON. EACH AGENCY SHOULD BE CONTACTED PRIOR TO ANY RELIANCE UPON THE ACCURACY OF SUCH LOCATIONS SHOWN HEREON, INCLUDING PRIOR TO EXCAVATION AND DIGGING.
2. ALL ELEVATIONS SHOWN REFER TO NAVD 88 DATUM, 2009 GEIOD.
3. NOTE: THE UNDERSIGNED DOES NOT CERTIFY TO THE LOCATION OF THE ANY IMPROVEMENTS SHOWN OTHER THAN THE LOCATION OF THE ABOVE GROUND SEWER AS SHOWN.

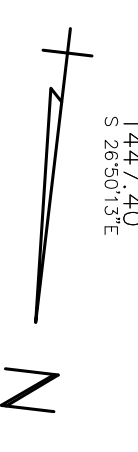


**BFM Corporation**  
 Professional Land Surveying  
 1011 NORTH GAUSEWAY BLVD, SUITE 16  
 MERISITE, BRICKSPRING, LOUISIANA, 70451  
 OFFICE (985)-778-0751  
 FAX NO. (985)-778-0752  
 CITY OF MANDEVILLE  
 ST. TAMMANY PARISH, LOUISIANA, 70471



SCALE IN FEET  
 50 25 0 50

SEWER SURVEY  
 SCALE: 1"=50'



#	DESCRIPTION	DATE

**SEWER SYSTEM RENOVATION**  
**BRIDGE CITY CENTER FOR YOUTH**  
 PROJ. NO. 08-403-11-01 PART 1  
 3225 RIVER ROAD  
 BRIDGE CITY, LA 70094

JOB No: 2156 DATE: 3/7/2014  
 DRAWN BY: DPD CHECKED BY: BM

**DAMMON ENGINEERING, INC.**  
 Architects & Engineers

CHIEF ENGINEER, BRIAN MISTICH, P.E.  
 CHIEF ARCHITECT, KEVIN KINCHEN  
 554 OLD SPANISH TRAIL  
 SLIDELL, LA 70458

dammoneengineering.com  
 PHONE: 985-649-5632  
 FAX: 985-641-5950

SEWER SURVEY  
 SHEET No: 02 OF 08  
**C-1**