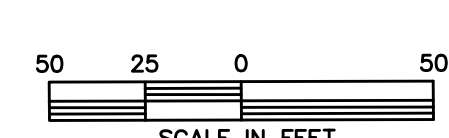
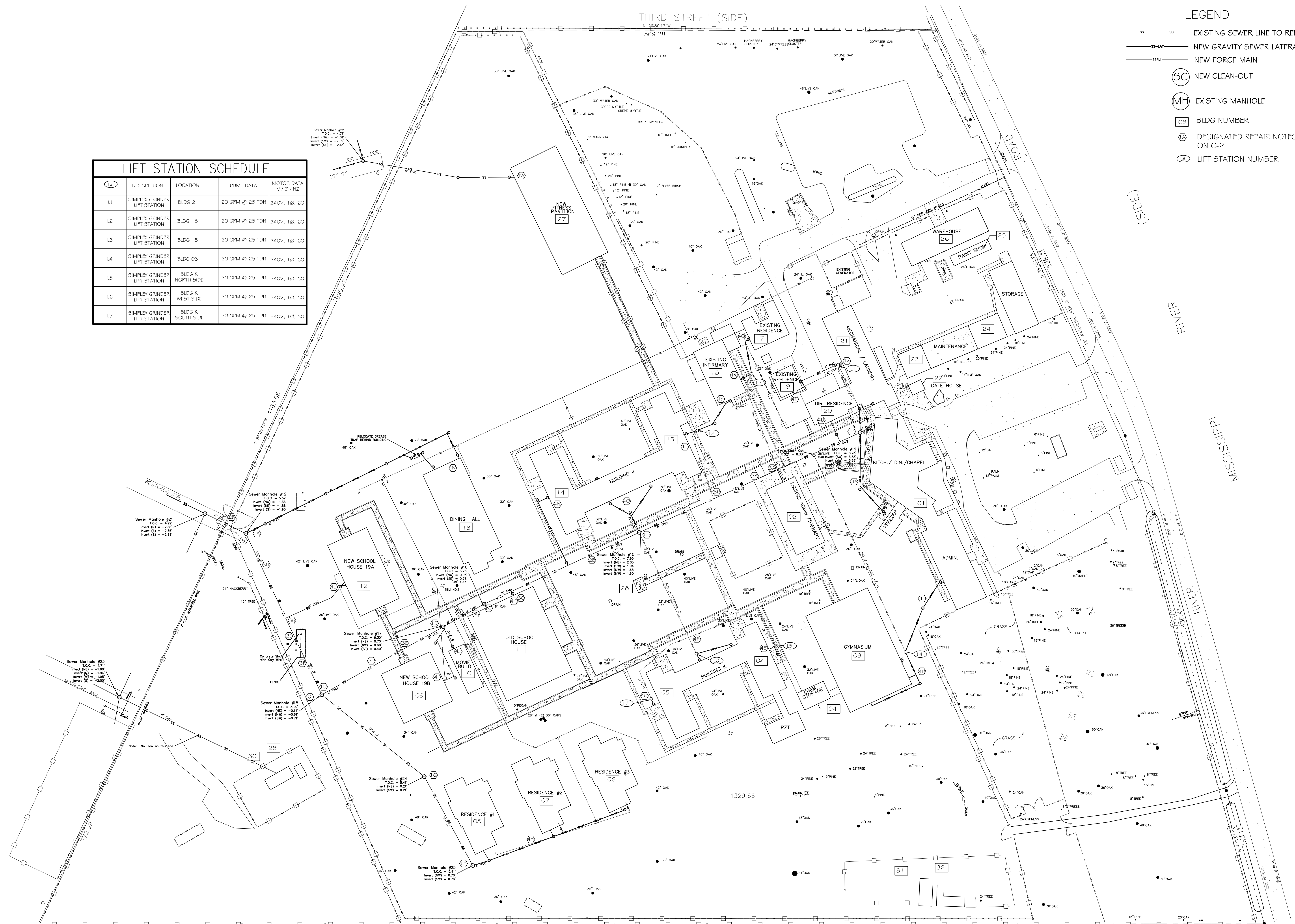


LIFT STATION SCHEDULE				
ID	DESCRIPTION	LOCATION	PUMP DATA	MOTOR DATA V @ / HZ
L1	SIMPLEX GRINDER LIFT STATION	BLDG 21	20 GPM @ 25 TDH	240V, 1Ø, 60
L2	SIMPLEX GRINDER LIFT STATION	BLDG 16	20 GPM @ 25 TDH	240V, 1Ø, 60
L3	SIMPLEX GRINDER LIFT STATION	BLDG 15	20 GPM @ 25 TDH	240V, 1Ø, 60
L4	SIMPLEX GRINDER LIFT STATION	BLDG 03	20 GPM @ 25 TDH	240V, 1Ø, 60
L5	SIMPLEX GRINDER LIFT STATION	BLDG K NORTH SIDE	20 GPM @ 25 TDH	240V, 1Ø, 60
L6	SIMPLEX GRINDER LIFT STATION	BLDG K WEST SIDE	20 GPM @ 25 TDH	240V, 1Ø, 60
L7	SIMPLEX GRINDER LIFT STATION	BLDG K SOUTH SIDE	20 GPM @ 25 TDH	240V, 1Ø, 60

- LEGEND**
- SS — SS — EXISTING SEWER LINE TO REMAIN
 - SS-LAT — NEW GRAVITY SEWER LATERAL
 - SSM — NEW FORCE MAIN
 - SC — NEW CLEAN-OUT
 - MH — EXISTING MANHOLE
 - 09 — BLDG NUMBER
 - Ⓜ — DESIGNATED REPAIR NOTES ON C-2
 - Ⓛ — LIFT STATION NUMBER



SITE PLAN
SCALE: 1" = 50'

DAMMON ENGINEERING, INC.
Architects & Engineers

ADMINISTRATIVE: PHOENIX, AZ
OFFICE: 955-649-9532
PHONE: 905-649-9532
FAX: 905-641-5950

CHIEF ENGINEER: BRIAN MISTICH, P.E.
CHIEF ARCHITECT: KEVIN KIRCHEN
554 OLD SPANISH TRAIL
SUDELL, LA 70456

**SEWER SYSTEM RENOVATION
BRIDGE CITY CENTER FOR YOUTH**
PROJ. NO. 08-403-11-01 PART 1
322 DRIVER ROAD
BRIDGE CITY, LA 70004

JOB NO: 2156 DATE: 6/10/2014
DRAWN BY: DPD CHECKED BY: BM

#	DESCRIPTION	DATE



SITE PLAN

SHEET No: 04 OF 08

C-3