

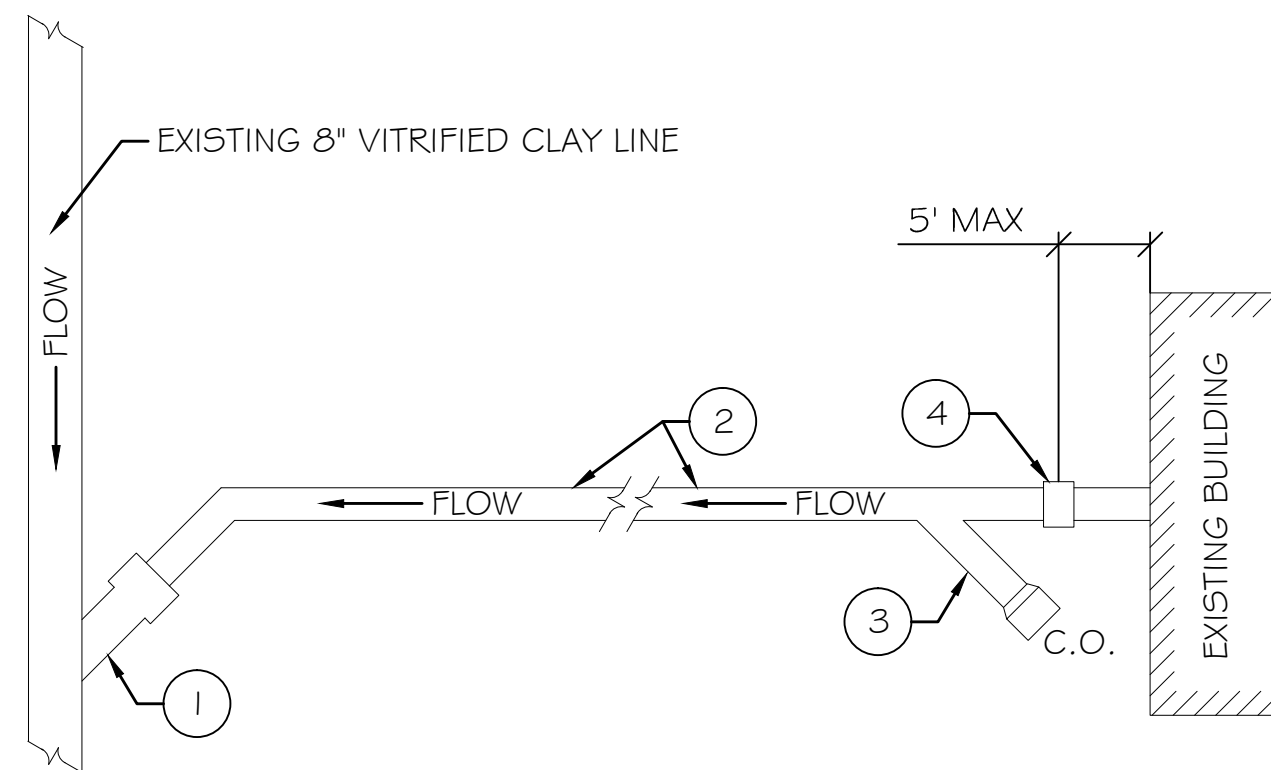
MANHOLE RENOVATION NOTES

1. INSPECT AND TV MANHOLES FOR ROOT INTRUSION OR INFILTRATION INCLUDING AT MANHOLE FRAME AND ADVISE OWNER AND ARCHITECT. REPAIR AS REQUIRED.
2. REPAIR EXISTING MANHOLE DAMAGE SUCH AS, BUT NOT LIMITED TO: MISSING MORTAR, MISSING BRICKS, EXPOSED AGGREGATE, EXPOSED REINFORCING STEEL, CRACKS, PINHOLES, & BRICK DEGRADATION.
3. BRICK SHALL CONFORM TO AASHTO DESIGNATION M91, MANHOLE BRICK GRADE MM. MORTAR TO BE NON-SHRINK, POLYMER MODIFIED REPAIR MORTAR.
4. REPLACE ANY MISSING STEPS AS REQD. STEPS TO BE ALUMINUM ALLOY TO MEET PHYSICAL AND CHEMICAL REQUIREMENTS OF ASTM-B221.
5. PREPARE SURFACE WITH HIGH PRESSURE AND/OR DETERGENT CLEANING. SEE SPECS.
6. PROPERLY PREPARE FOR AND INSTALL THE RENEWAL COMPONENT SYSTEM IN ACCORDANCE WITH MANUFACTURER'S RECOMMENDATIONS, SEE SPECS.

MANHOLE RENOVATION DETAIL

N.T.S.

1
C5



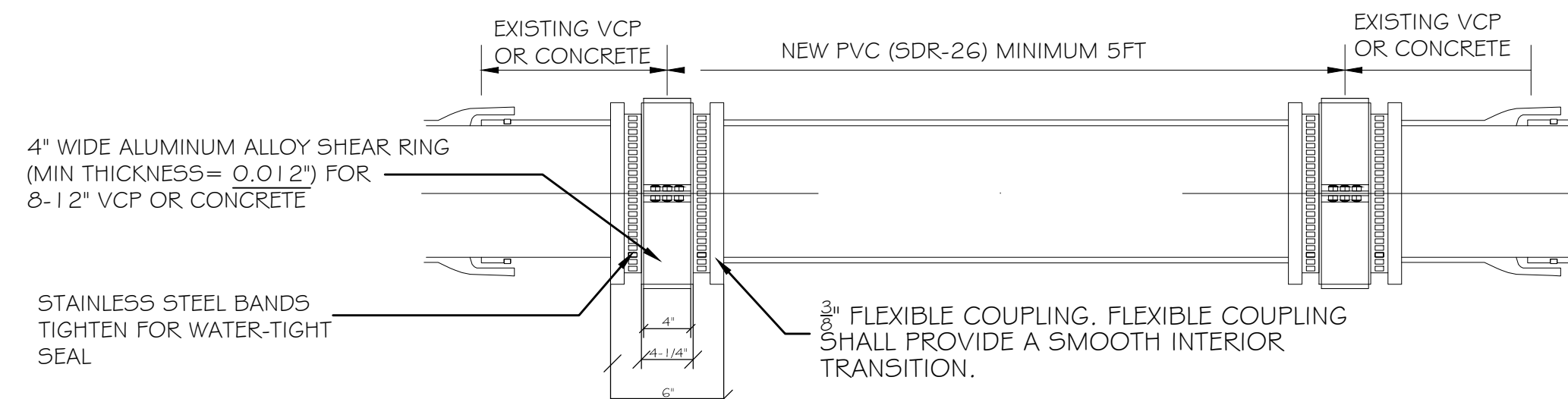
SERVICE LATERAL NOTES

1. EVALUATE EXISTING CONNECTION / WYE. REPAIR, REPLACE (VITRIFIED CLAY, CAST IRON) OR PROVIDE NEW TAP SADDLE, FERNCO OR EQUAL.
2. PROVIDE NEW 6"Ø SDR26 PVC PIPE SERVICE LATERAL.
3. EVALUATE EXISTING CLEANOUT. REPAIR, REPLACE, OR PROVIDE NEW. PROVIDE CAST IRON CLEAN OUT BOX AT GRADE IF REQUIRED, SEE SPECS. IF NO CLEAN OUT EXISTS, PROVIDE NEW, SEE DETAIL AND SPECS.
4. EVALUATE CONNECTION / STUB-OUT TO EXISTING BUILDING. PROVIDE PROPER CONNECTION, FERNCO OR EQUAL.

TYP. SERVICE LATERAL SCHEMATIC

N.T.S.

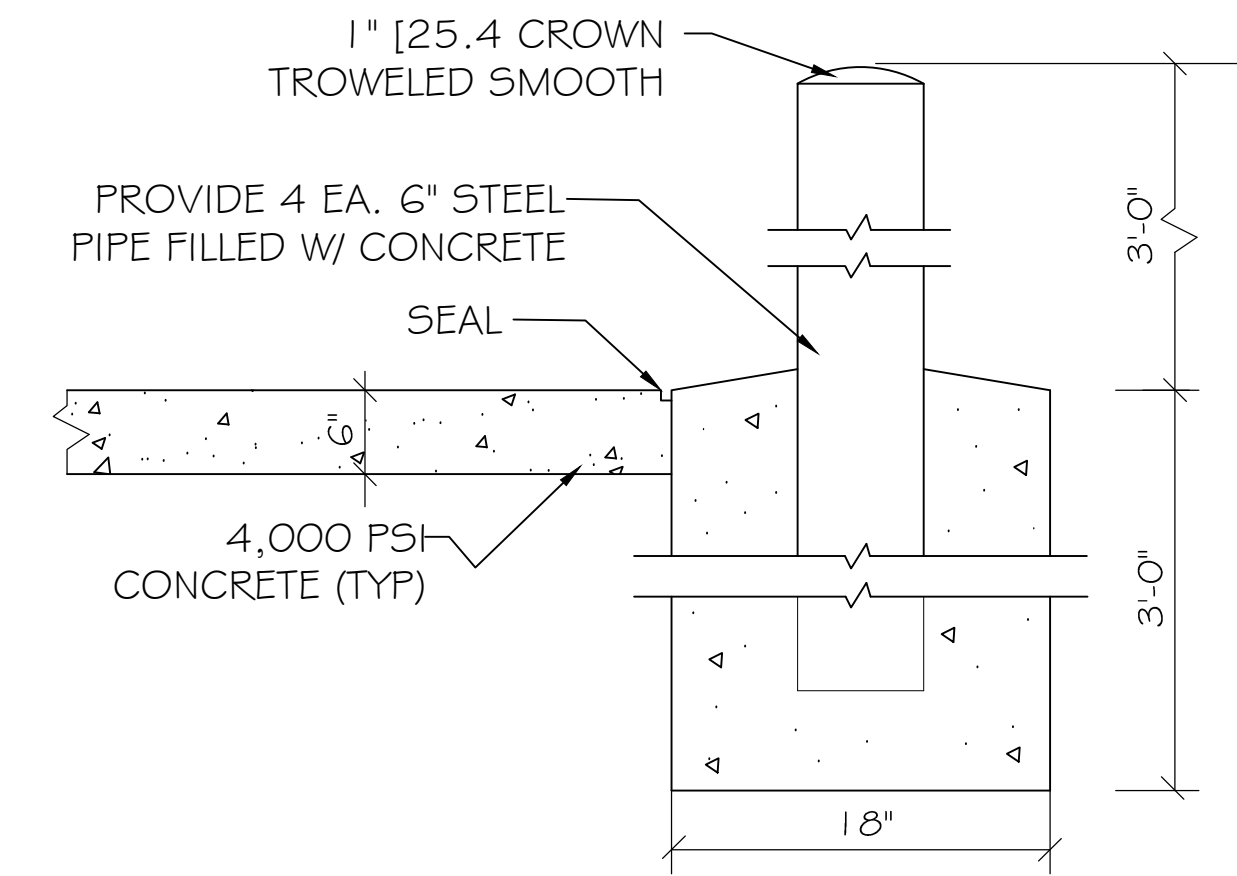
5
C5



TYP. 8" VITRIFIED CLAY PIPING REPAIR
ASTM C1173 FLEXIBLE TRANSITION COUPLING FOR SEWER PIPING

N.T.S.

2
C5

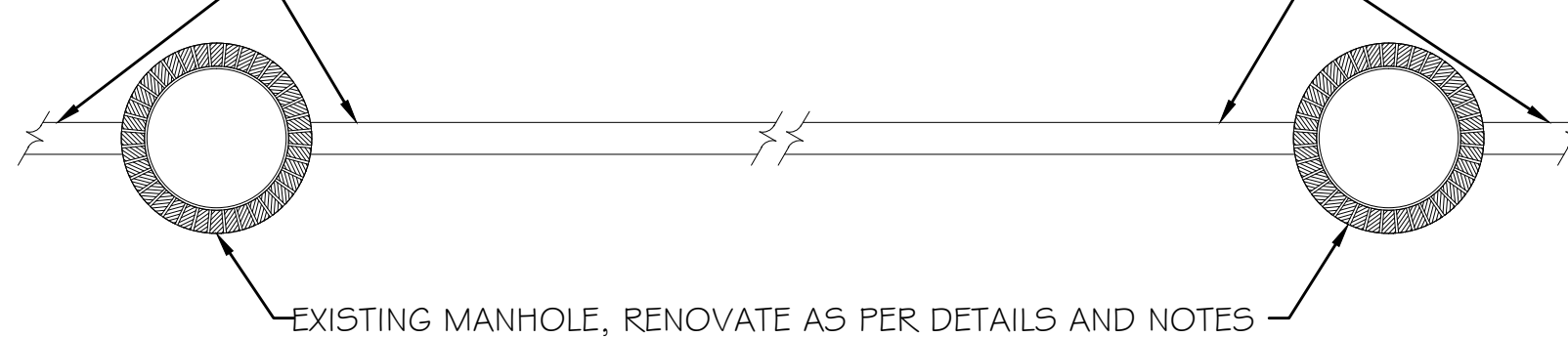


PIPE BOLLARD DETAIL

N.T.S.

4
C5

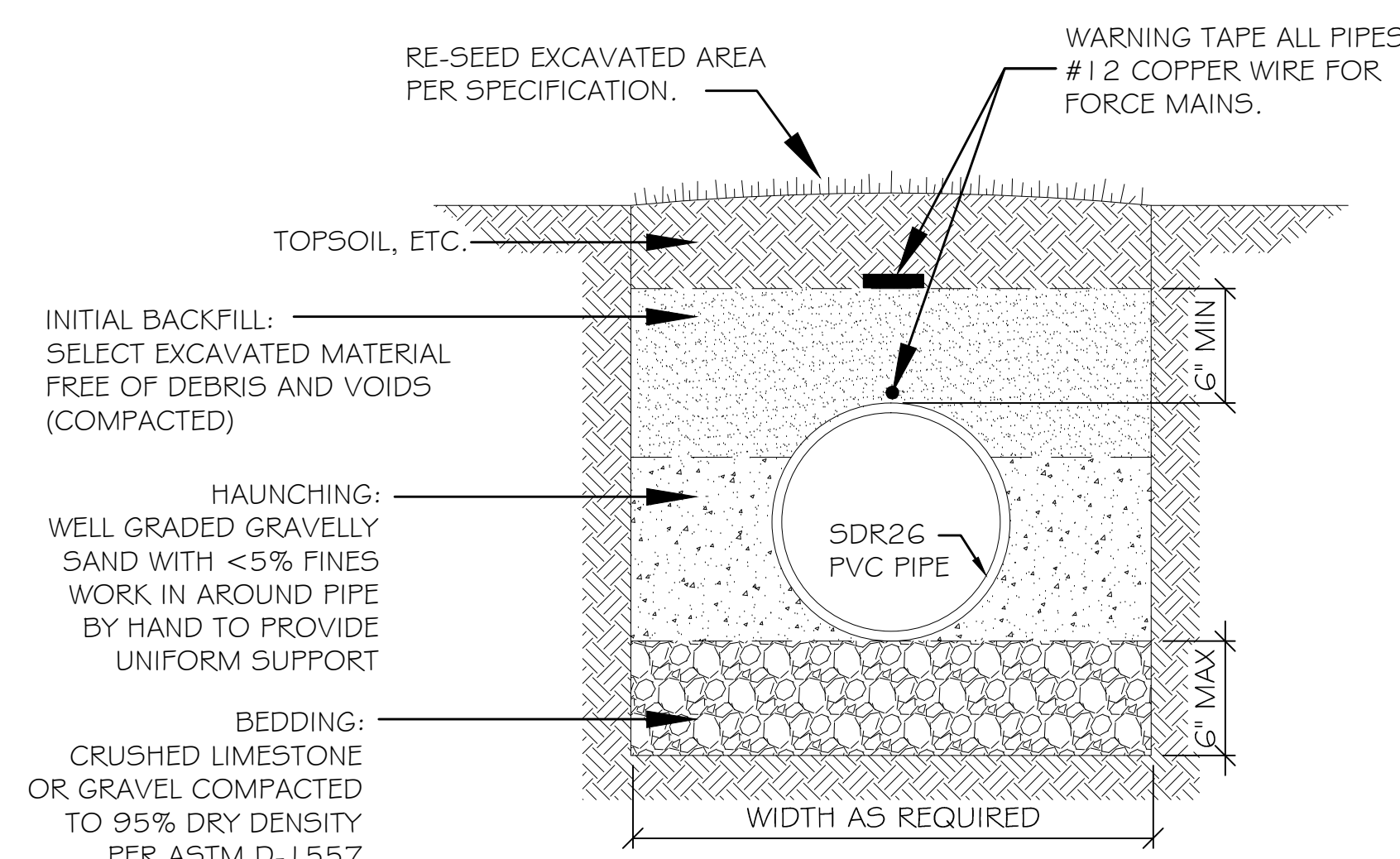
EXISTING 8" VITRIFIED CLAY SEWER LINE, TV, CLEAN, REPAIR AND PROVIDE C.I.P.P. INSTALLATION IN ACCORDANCE WITH SPECS., MANUFACTURER'S RECOMMENDATIONS AND INDUSTRY BEST PRACTICES



TYP. SCHEMATIC OF 8" EXISTING VITRIFIED LINE, TO BE RENOVATED

N.T.S.

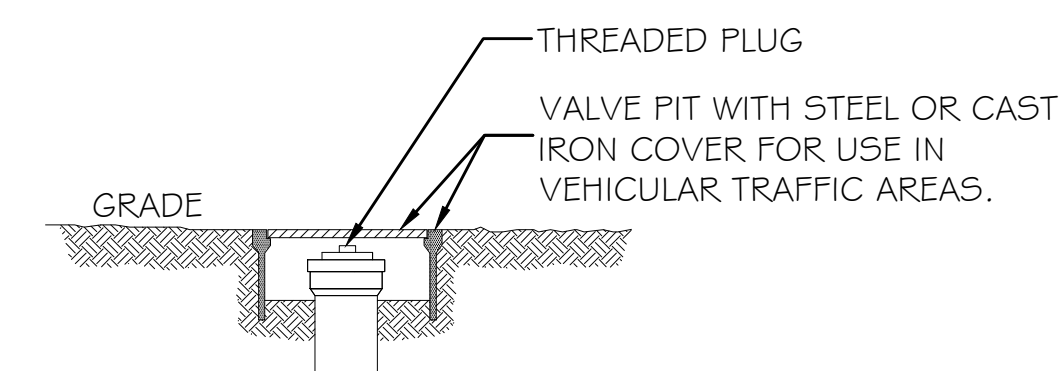
3
C5



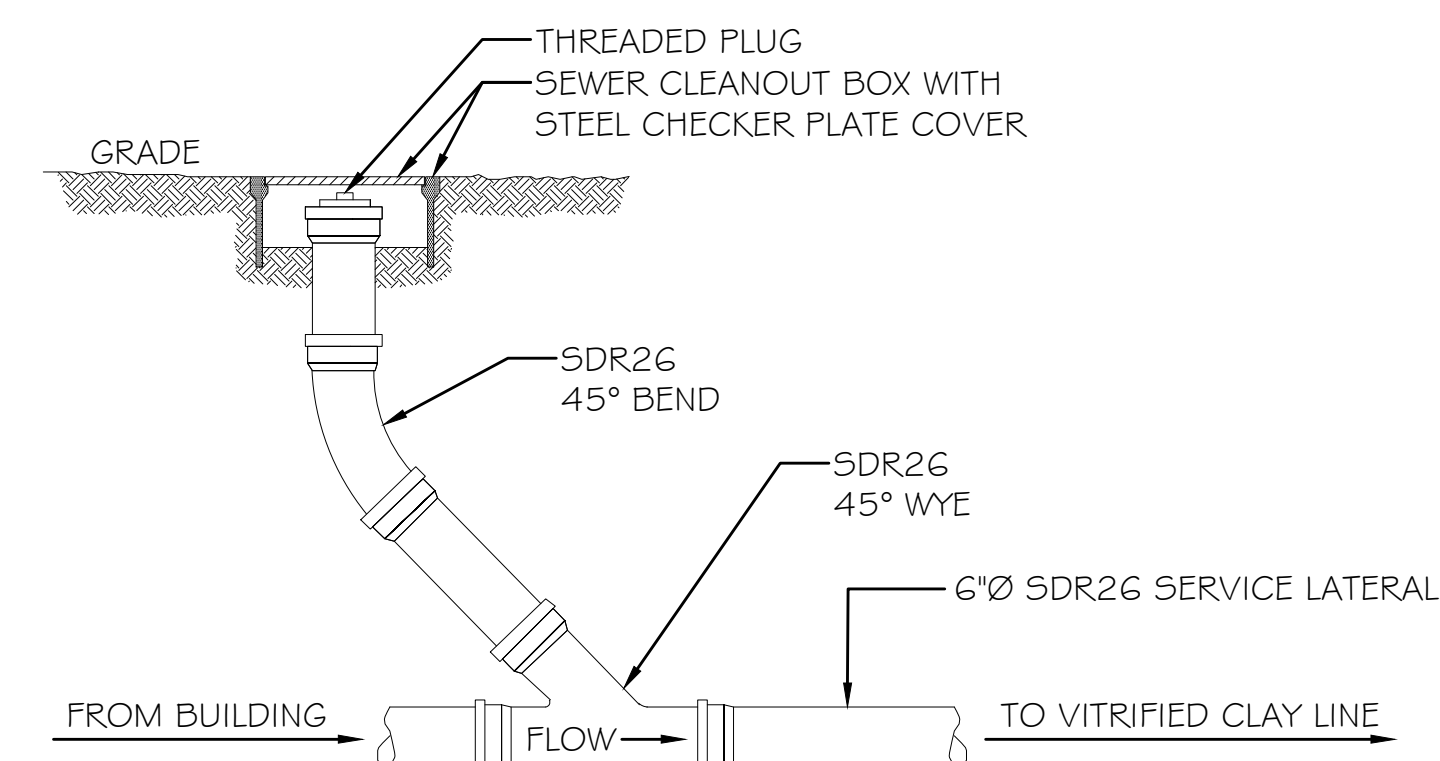
SERVICE LATERAL SECTION

N.T.S.

6
C5



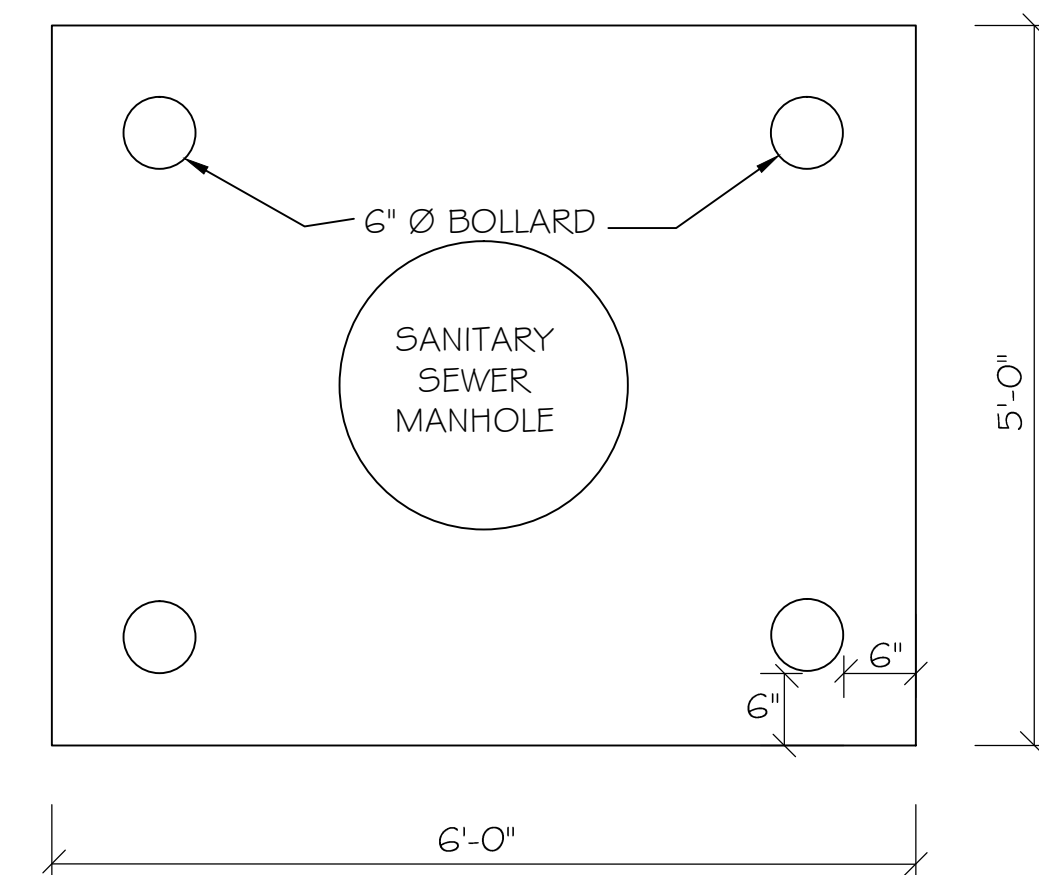
CLEAN-OUT BOX(S) FOR AREAS WITH VEHICULAR TRAFFIC



SEWER CLEANOUT DETAIL

N.T.S.

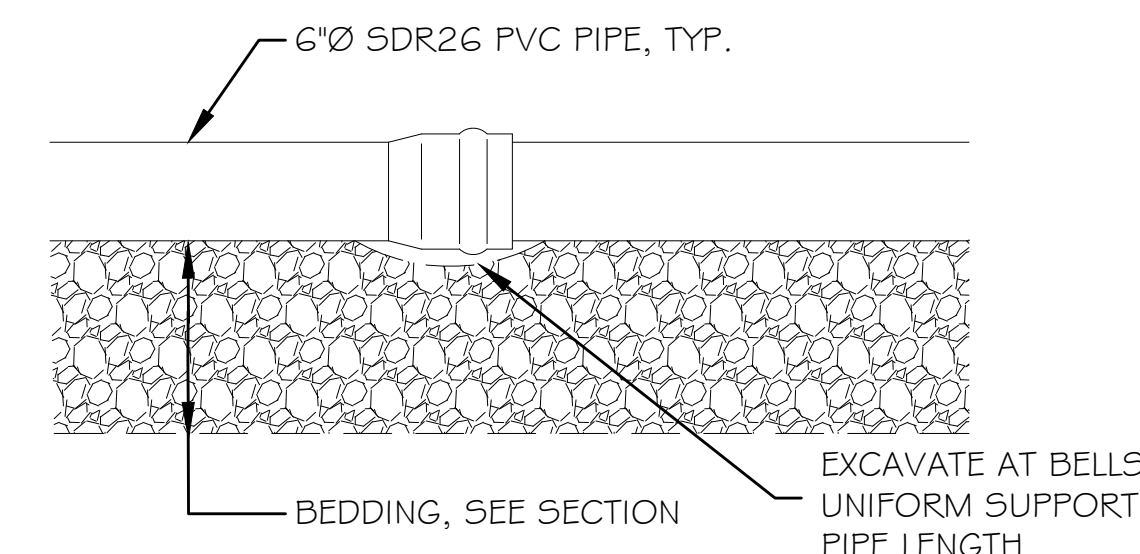
7
C5



MANHOLE PAD PLAN VIEW

N.T.S.

8
C5



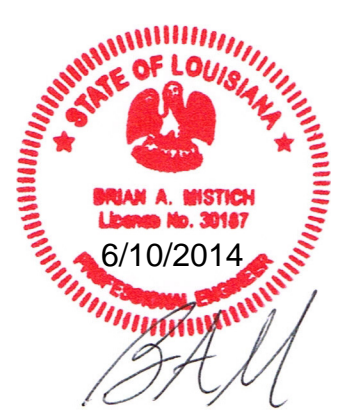
SERVICE LATERAL DETAIL

N.T.S.

9
C5

SEWER SYSTEM RENOVATION
BRIDGE CITY CENTER FOR YOUTH
PROJ. NO. 08-403-11-01 PART 1
3225 RIVER ROAD
BRIDGE CITY, LA 70004

DATE	6/10/2014
REVISIONS	
# DESCRIPTION	
JOB No:	2156
DATE:	6/10/2014
DRAWN BY:	DPD
CHECKED BY:	BM



SEWER DETAILS
#1

SHEET No: 06 OF 08

C-5

DAMMON ENGINEERING, INC.
Architects & Engineers

Administrative: 504-985-6493
Phone: 985-649-9432
Fax: 985-641-5950

CHIEF ENGINEER: BRIAN MISTICH, P.E.
CHIEF ARCHITECT: KEVIN KITCHEN
554 OLD SPANISH TRAIL
SUDELL, LA 70456