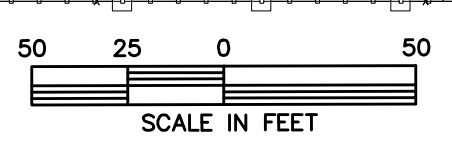
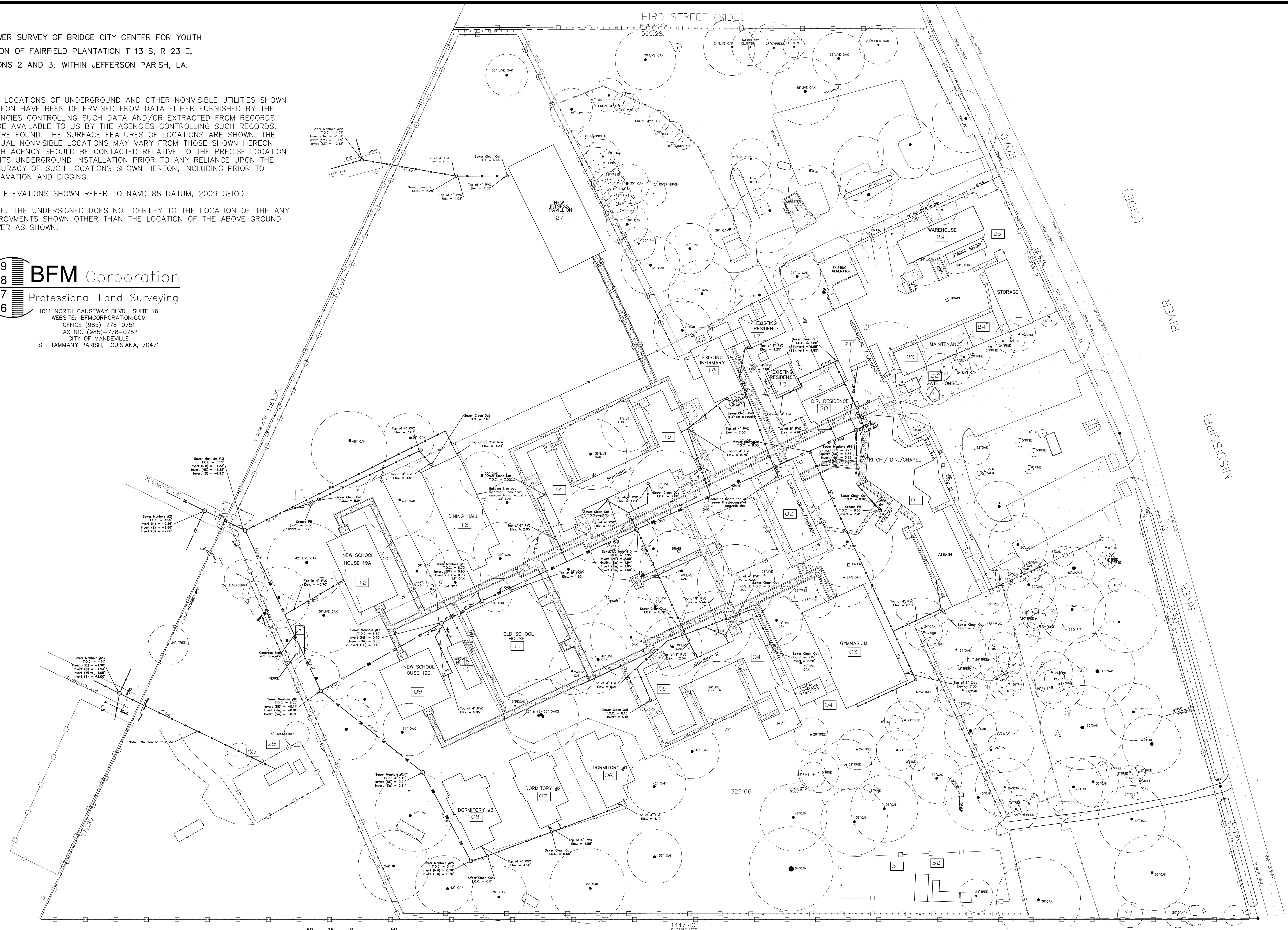


A SEWER SURVEY OF BRIDGE CITY CENTER FOR YOUTH
 PORTION OF FAIRFIELD PLANTATION T 13 S, R 23 E,
 SECTIONS 2 AND 3; WITHIN JEFFERSON PARISH, LA.

1. THE LOCATIONS OF UNDERGROUND AND OTHER NONVISIBLE UTILITIES SHOWN HEREON HAVE BEEN DETERMINED FROM DATA EITHER FURNISHED BY THE AGENCIES CONTROLLING SUCH DATA AND/OR EXTRACTED FROM RECORDS MADE AVAILABLE TO US BY THE AGENCIES CONTROLLING SUCH RECORDS. WHERE FOUND, THE SURFACE FEATURES OF LOCATIONS ARE SHOWN. THE ACTUAL NONVISIBLE LOCATIONS MAY VARY FROM THOSE SHOWN HEREON. EACH AGENCY SHOULD BE CONTACTED RELATIVE TO THE PRECISE LOCATION OF ITS UNDERGROUND INSTALLATION PRIOR TO ANY RELIANCE UPON THE ACCURACY OF SUCH LOCATIONS SHOWN HEREON, INCLUDING PRIOR TO EXCAVATION AND DIGGING.
2. ALL ELEVATIONS SHOWN REFER TO NAVD 88 DATUM, 2009 GEIOD.
3. NOTE: THE UNDERSIGNED DOES NOT CERTIFY TO THE LOCATION OF THE ANY IMPROVMENTS SHOWN OTHER THAN THE LOCATION OF THE ABOVE GROUND SEWER AS SHOWN.

BFM Corporation
 Professional Land Surveying
 1011 NORTH CAUSEWAY BLVD., SUITE 16
 WEBSITE: BFM CORPORATION.COM
 OFFICE (985)-778-0751
 FAX NO. (985)-778-0752
 CITY OF MANDEVILLE
 ST. TAMMANY PARISH, LOUISIANA, 70471



SEWER SURVEY
 SCALE: 1" = 50'

DAMMON ENGINEERING, INC.
 554 Old Spanish Trail
 Slidell, LA 70458
 (985) 649-5832
 www.dammonengineering.com
 info@dammonengineering.com
 Chief Engineer: Brian Mitchell, PE

REVISIONS	DATE

DESCRIPTION

SEAL:

SEWER SYSTEM RENOVATION: PROJECT
 NUMBERS: 08-403-11-01 PART 1 &
 08-403-04B-01, PART 20

BRIDGE CITY CENTER FOR YOUTH
 3225 RIVER ROAD
 BRIDGE CITY, LA 70004
 JOB NO.: 2156 DATE: 10/1/2015
 DRAWN BY: DPJ CHECKED BY: BAK

SHEET TITLE:
 SEWER SURVEY BY BFM
 CORP.

DRAWING NUMBER:
C-1

SHEET No: 2 of 5