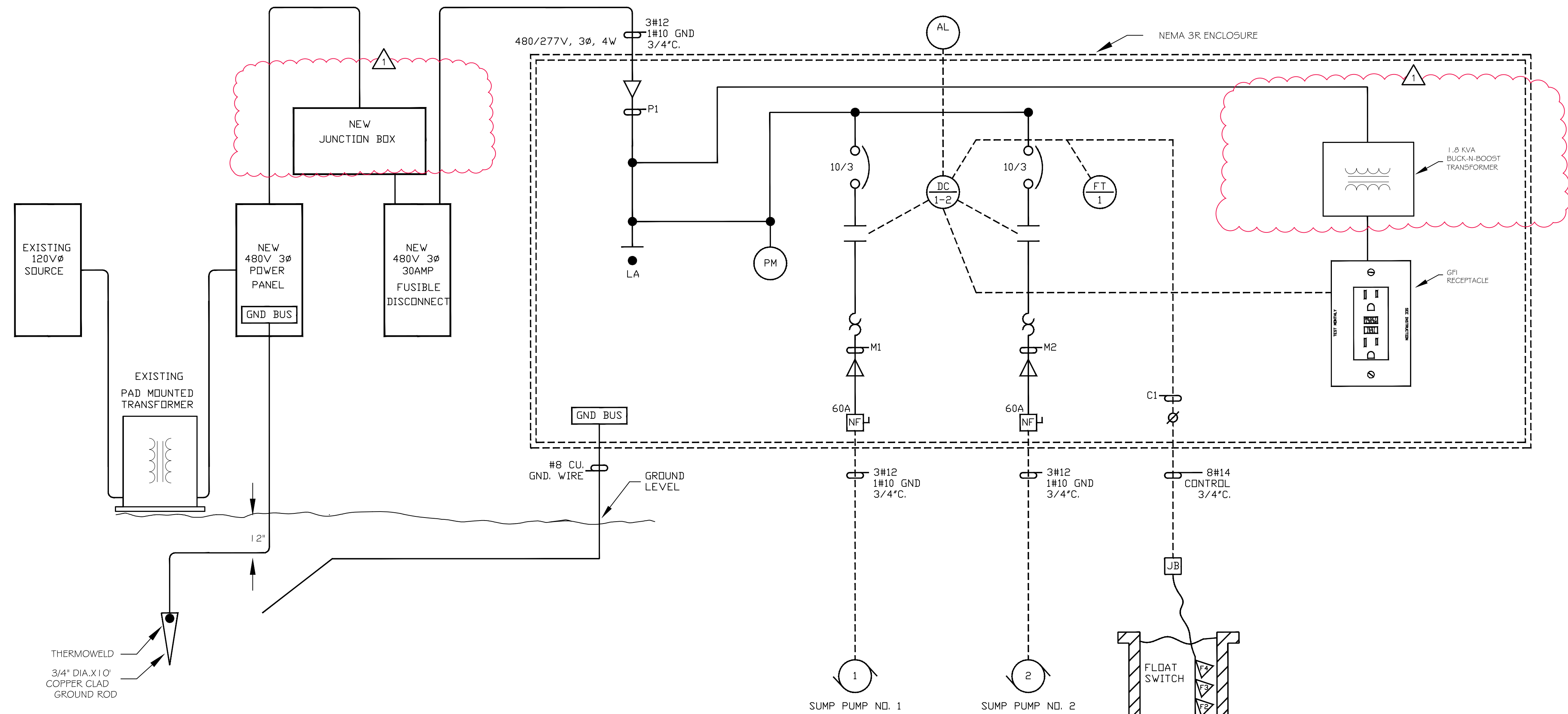
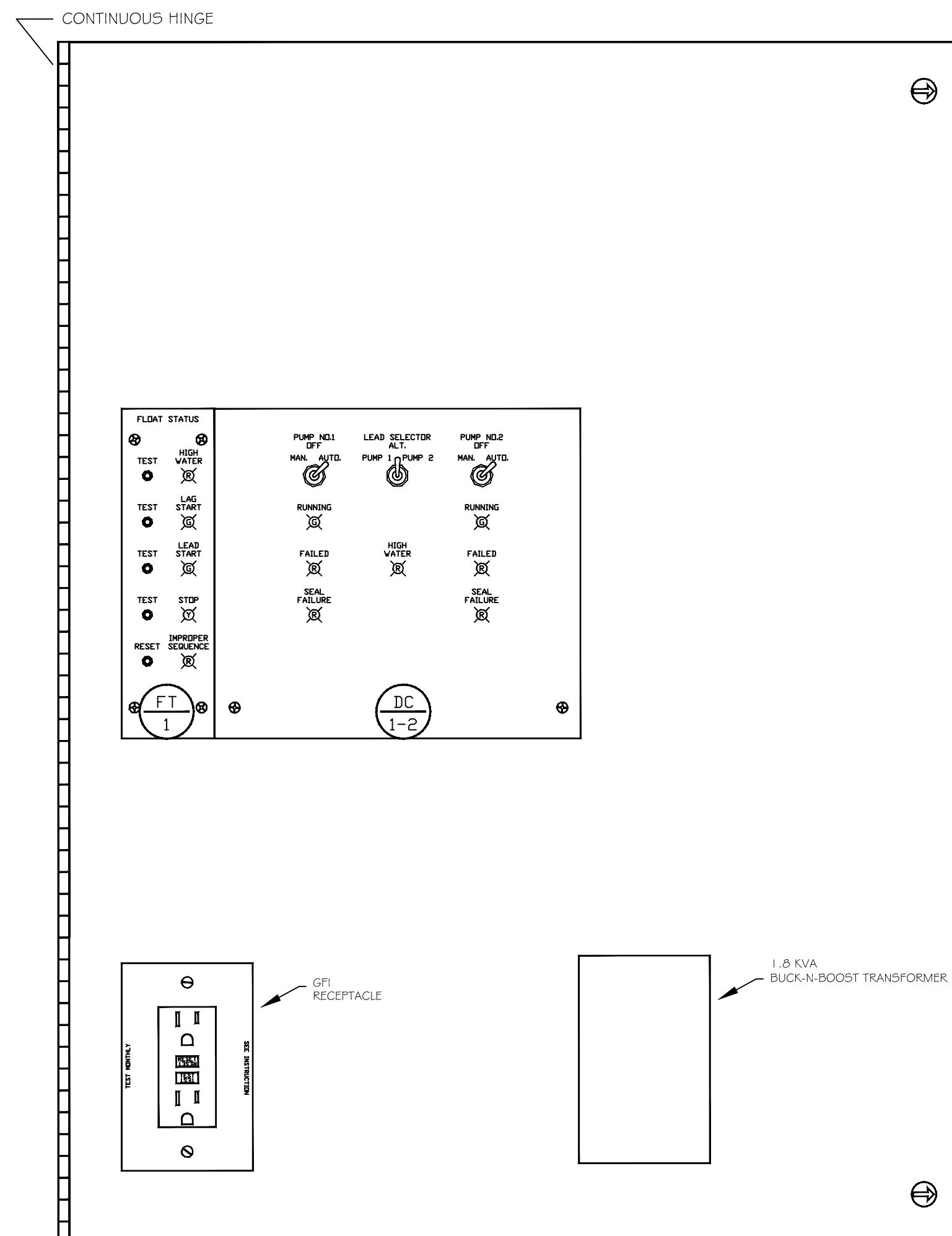
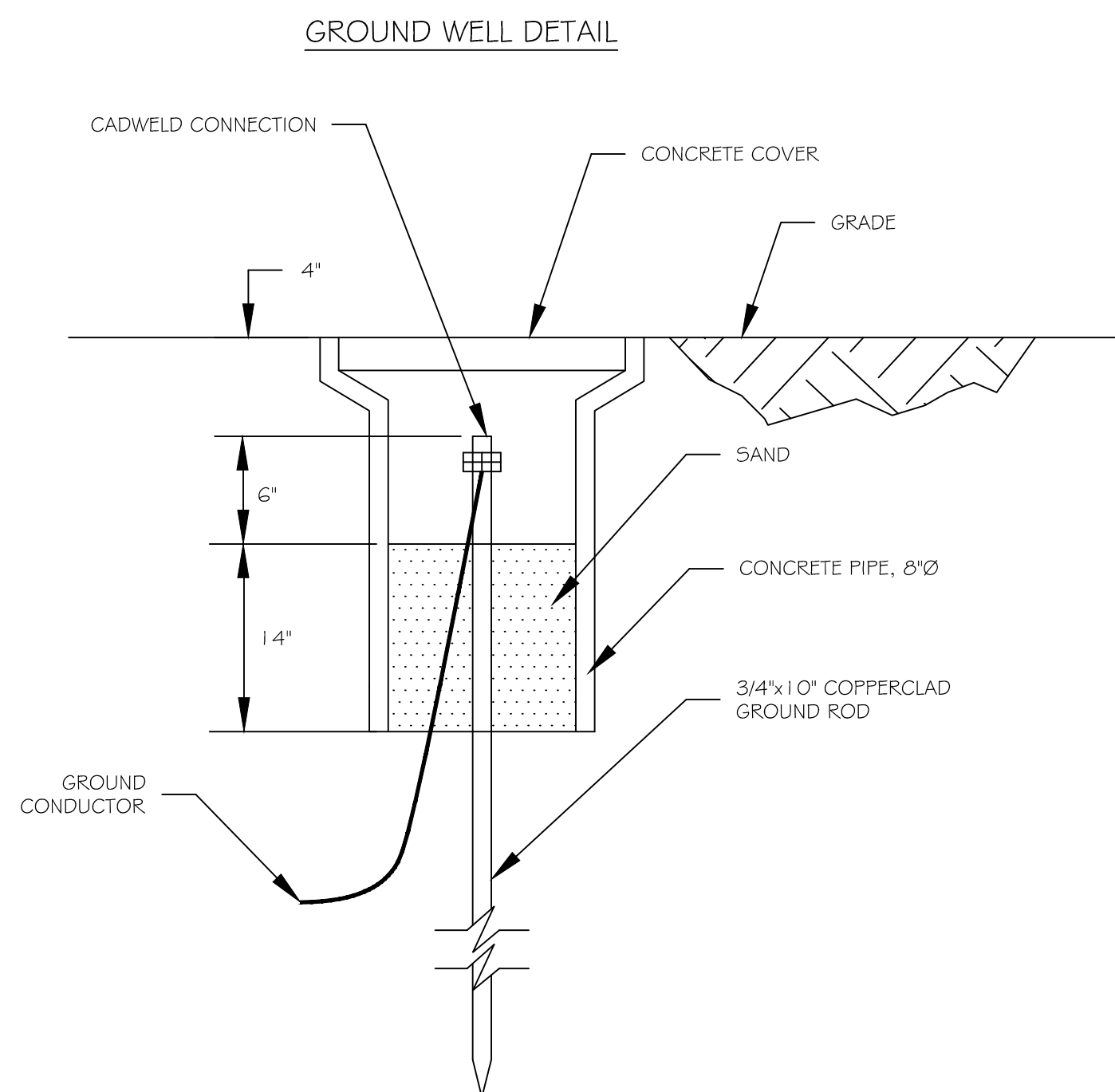


NEMA 3R ENCLOSURE
(24"H x 24"W x 8"D)
OR OTHER APPROVED PRE-DESIGNED
MANUFACTURE ENCLOSURE



CONTROL PANEL
DEADFRONT DETAIL

LIFT STATION CONTROL PANEL
ONE LINE POWER DIAGRAM AND
PROCESS AND INSTRUMENTATION DIAGRAM (P&ID)



- LEGEND**
- LIGHTNING ARRESTOR
 - PHASE MONITOR
 - DUPLEX CONTROLLER
 - FLDAT TEST
 - ALARM LIGHT

DAMMON ENGINEERING, INC.
554 Old Spanish Trail, Suite 111, Metairie, LA 70002
(504) 885-5832
www.dammonengineering.com
info@dammonengineering.com

Chief Engineer: Brian Alstich, PE
554 Old Spanish Trail, Suite 111, Metairie, LA 70002

REVISIONS	DATE
1	3/17/2018
2	3/17/2018

DESCRIPTION:
1 REVISED PLAN FOR 35AMP BRK @ MDP AND ADD JUNCTION BOX & ADD BUCK-N-BOOST TRANSFORMER

SEAL:

SEWER SYSTEM RENOVATION;
PROJECT NUMBERS: 08-403-11-01 PART 1 & 08-403-04B-01, PART 20 & 01-107-06B-11, PART 17
BRIDGE CITY CENTER FOR YOUTH
3225 RIVERS ROAD
BRIDGE CITY, LA 70094
JOB No: 2156 DATE: 10/7/2016
DRAWN BY: CHECKED BY:

SHEET TITLE:
LIFT STATION CONTROLS

DRAWING NUMBER:
E-2

SHEET No: 2 of 2