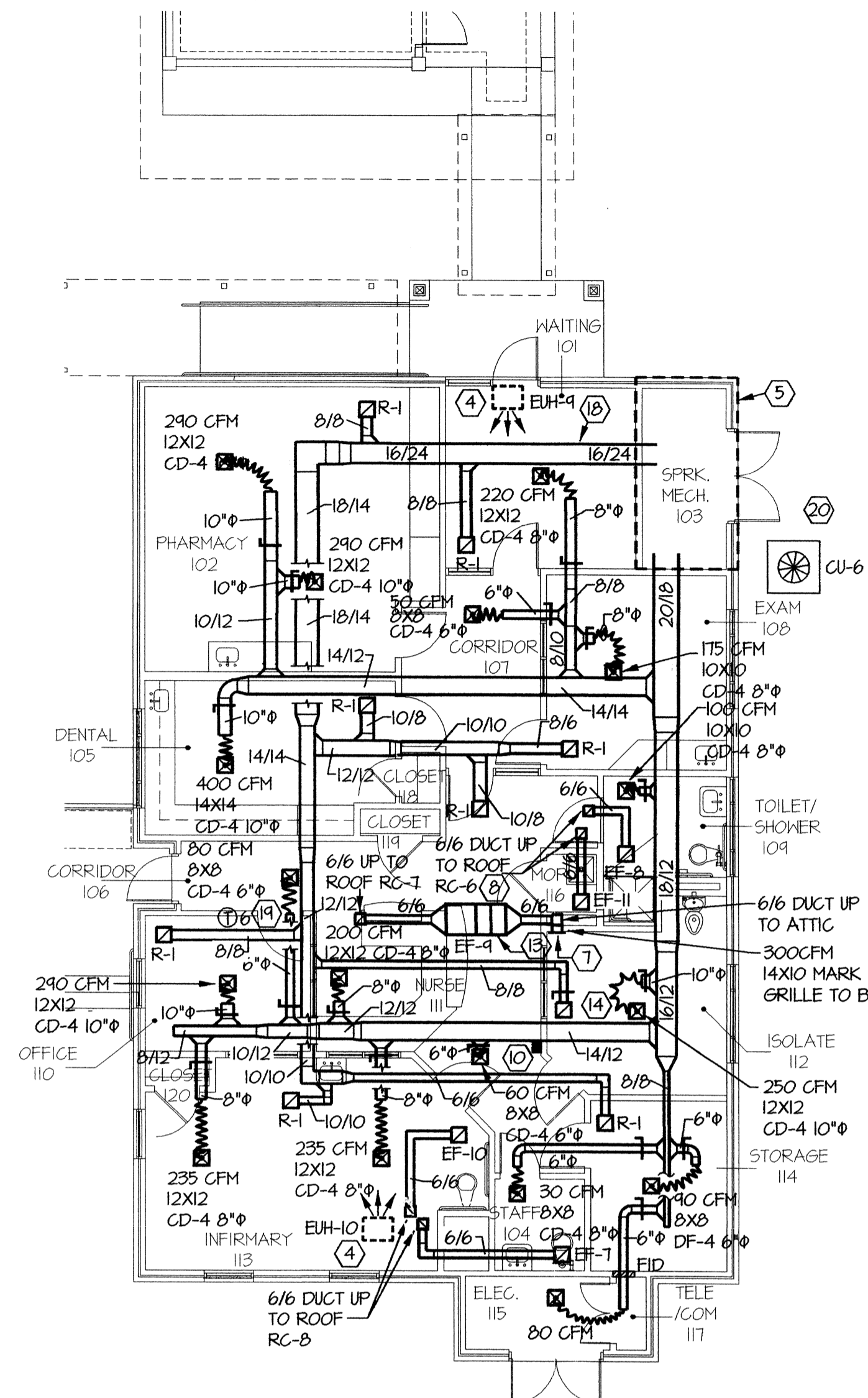


ALT. #2 FLOOR PLAN INFIRMARY - PLUMBING  
SCALE: 1/8" = 1'-0"



GENERAL NOTES THIS SHEET:

- A. ALL WASTE PIPING SHOWN SHALL BE RUN BELOW SLAB UNLESS NOTED OTHERWISE.
- B. HANG ALL UNDERGROUND PIPING FROM SLAB. SEE DETAIL ON SHEET M-12.
- C. ALL HW, CH, AND VENT PIPING SHALL BE RUN ABOVE CEILING UNLESS NOTED OTHERWISE.
- D. SEE PLUMBING RISER DIAGRAM FOR PIPE SIZING NOT SHOWN ON PLANS.
- E. ENTIRE BUILDING SHALL BE PROTECTED WITH A FULLY AUTOMATIC SPRINKLER SYSTEM. SEE SHEET FP-1.
- F. COORDINATE EXACT ROUTINGS OF ALL PIPING SO AS NOT TO CONFLICT WITH OTHER TRADES INCLUDING DUCTWORK AND ELECTRICAL.
- G. DUCT SIZES SHOWN ARE FREE AREA SIZES, SEE SPECIFICATIONS FOR DUCT MATERIALS AND INSULATION REQUIRED. INSULATE DIFFUSER BACK PANS WITH 2" FOIL FACED DUCT INSULATION. SEAL AND SECURE WITH FOIL FACED TAPE TO ENSURE VAPOR SEAL. SEE SHEET M-6 FOR DETAILS. CONTRACTOR SHALL INTERNALLY LINE AND EXTERNALLY WRAP FIRST 10' OF SUPPLY AND RETURN AIR DUCT WORK.
- H. COORDINATE EXACT ROUTING OF ALL DUCTWORK SO AS NOT TO CONFLICT WITH OTHER TRADES. COORDINATE EXACT LOCATION OF ALL CEILING GRILLES WITH LIGHTS, SPRINKLER, ETC. ALL DUCTWORK SHALL BE ROUTED THROUGH TRUSS SYSTEM. COORDINATE ALL DUCT RUNS WITH TRUSS MANUFACTURE PRIOR TO SUBMITTING DUCTWORK SHOP DRAWINGS. CONTRACTOR IS RESPONSIBLE FOR ALL COORDINATION OF DUCT ROUTING THROUGH TRUSS SYSTEM AND SHALL COORDINATE, REVIEW ARCHITECTURAL AND STRUCTURAL DRAWINGS.
- I. CONTRACTOR IS CAUTIONED NOT TO FABRICATE OR INSTALL ANY DUCTWORK UNTIL DUCTWORK SHOP DRAWINGS HAVE BEEN SUBMITTED AND APPROVED BY ENGINEER. REPRODUCTION OF CONTRACT DOCUMENTS NOT ACCEPTABLE.
- J. FLEX DUCT RUN OUTS TO SUPPLY AIR CEILING DIFFUSERS SHALL MATCH DIFFUSER NECK SIZES. MAXIMUM FLEX DUCT RUN OUTS SHALL BE LIMITED TO 5'-0". SUBSTITUTE RIGID METAL ROUND DUCTWORK IN LIEU THEREOF.
- K. DUCT INSULATION SHALL BE MINIMUM R-5 FOR DUCTWORK ROUTED ABOVE CEILING WITHIN BUILDING ENVELOPE. DUCT INSULATION OUTSIDE THE BUILDING ENVELOPE SHALL BE MINIMUM R-8.
- L. FLEXIBLE DUCT CONNECTIONS SHALL BE MECHANICALLY FASTENED AND SEALED TO PREVENT LEAKAGE.
- M. PROVIDE MANUAL VOLUME DAMPER AT ALL UNIT OUTSIDE AIR INTAKES. PROVIDE VOLUME DAMPERS AT ALL TAPS INTO MAIN DUCT RUNS.
- N. ALL SEAMS AND JOINTS ON METAL DUCT SHALL BE SEALED USING AN ELASTOMERIC TAPE. SEE SPECIFICATION.
- O. HVAC SYSTEM SHALL BE CONTROLLED BY PROGRAMMABLE THERMOSTAT. SEE SPECIFICATION FOR REQUIREMENTS.
- P. PROVIDE FIRE DAMPERS IN ALL RATED PARTITIONING WHERE DUCTWORK PENETRATES. SEE SHEET M-II FOR INSULATION DETAILS.
- Q. SEE SHEET M-II FOR ALL DUCT BRANCH CONNECTION REQUIREMENTS.
- R. SIZE ALL REFRIGERANT PIPING PER MANUFACTURER RECOMMENDATION FOR INSTALLATION REQUIREMENTS. INSULATE SUCTION WITH 3/4" THICK CLOSED CELL INSULATION. SEE SPECIFICATION.
- S. CONTRACTOR SHALL SEAL ALL ENDS OF OPEN DUCTWORK INCLUDING INSTALLED AND STORED DUCT ON SITE, AS TO NOT ALLOW CONSTRUCTION DUST AND DEBRIS TO GET INTO DUCTWORK.
- T. CONTRACTOR SHALL SUBMIT FOR REVIEW A DETAILED 1/4" SCALE LAYOUT OF ALL MECHANICAL EQUIPMENT ROOMS. DRAWING SHALL SHOW ALL EQUIPMENT, PIPING AND DUCTWORK. EACH TRADE SHALL COORDINATE ALL WORK PRIOR TO SUBMISSION AND INSTALLATION OF EQUIPMENT, PIPING AND DUCTWORK.

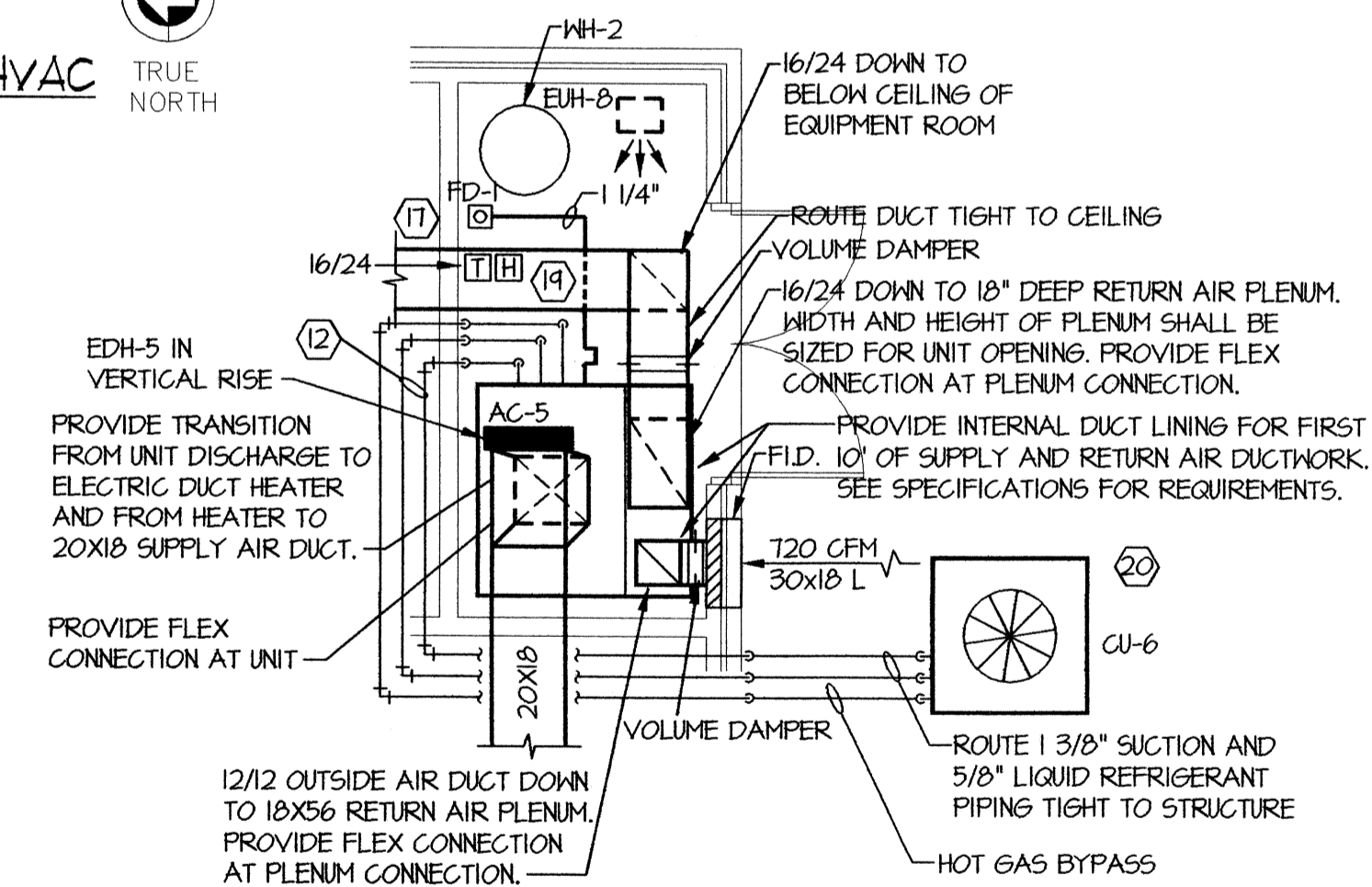


ALT. #2 FLOOR PLAN INFIRMARY - HVAC  
SCALE: 1/8" = 1'-0"



SPECIFIC NOTES THIS SHEET:

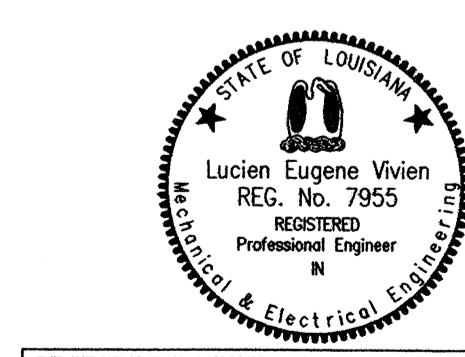
- 1. 6" FIRE/DOMESTIC WATER ENTRANCE. SEE CIVIL FOR CONTINUATION.
- 2. SEE FIRE/DOMESTIC WATER ENTRANCE DETAIL ON SHEET M-12.
- 3. 4" SEWER. SEE CIVIL FOR CONTINUATION.
- 4. ELECTRIC UNIT HEATER IN ATTIC FOR SPRINKLER PIPING FREEZE PROTECTION.
- 5. SEE LARGE SCALE ROOM THIS SHEET FOR MECHANICAL ROOM LAYOUT.
- 6. SEE SHEET FP-1 FOR SPRINKLER WATER ENTRANCE.
- 7. 24X24 RETURN AIR GRILLE MARK R MOUNTED IN CHASE WALL 18" AFF.
- 8. ISOLATION ROOM EXHAUST FAN IN ATTIC SPACE. COORDINATE LOCATION WITH TRUSS MANUFACTURE TO PROVIDE PROPER ACCESS TO ALL ELECTRICAL AND FILTER ACCESS.
- 9. COORDINATE EXACT LOCATION OF FLOOR DRAIN WITH MECHANICAL EQUIPMENT PRIOR TO UNDERGROUND ROUGH-IN INSTALLATION.
- 10. LOCATION OF ISOLATION VENTILATION SYSTEM CONTROL PANEL.
- 11. ROUTE 3/4" WATER, AIR, AND VACUUM PIPING UNDER GROUND TO LOCATION OF DENTAL CHAIR AND FROM AIR COMPRESSOR AND VACUUM PUMP. COORDINATE EXACT LOCATION WITH ARCHITECT.
- 12. REFRIGERANT AND DRAIN PIPING SHALL BE ROUTED AND INSTALLED AS NOT TO BLOCK OR CONFLICT WITH AC UNIT ACCESS PANELS.
- 13. GERMICIDAL AIR PURIFICATION FILTER WITH FILTER RACK INSTALLED IN DUCTWORK IN ATTIC. PROVIDE TRANSITION FROM 6/6" DUCT TO 12X20X16 FILTER AND EXHAUST FAN AND INSULATE FILTER RACK DUCTWORK AND FAN. SEE SPECIFICATIONS FOR FILTER REQUIREMENTS.
- 14. PROVIDE NORMALLY CLOSED LOW LEAKAGE CONTROL DAMPER. INTERLOCK DAMPER CONTROLLER EF-4 TO CLOSE WHEN EF-4 IS ENERGIZED.
- 15. MAIN BUILDING WATER SHUT OFF SWITCH. SEE RISERS ON SHEET M-8 FOR LOCATION OF VALVE. COORDINATE LOCATION OF SWITCH WITH ARCHITECT.
- 16. CLEANOUT IN CAST IRON BOX. SEE DETAIL ON SHEET M-12.



ALT. #2 LARGE SCALE MECHANICAL ROOM 103 EQUIPMENT LAYOUT  
SCALE: 1/4" = 1'-0"

- 17. TEMPERATURE SENSOR IN RETURN AIR DUCT. PROVIDE 12X12 ACCESS PANEL IN DUCTWORK.
- 18. HUMIDITY SENSOR IN RETURN AIR DUCT WITH 12X12 ACCESS PANEL IN RETURN AIR DUCT.
- 19. LOCATION OF AC-6 CONTROLS.
- 20. COORDINATE EXACT LOCATION OF CONDENSING UNIT WITH ARCHITECT PRIOR TO ROUGH-IN AND INSTALLATION.

NOTE: ALL WORK THIS SHEET SHALL BE INCLUDED UNDER ALT. #2



THE INFORMATION CONTAINED IN THIS DOCUMENT IS PROPRIETARY TO LUCIEN T. VIVIEN, JR., & ASSOC., INC. THE DOCUMENT MAY NOT BE DISCLOSED, REPRODUCED, OR USED FOR ANY PURPOSE, IN WHOLE OR IN PART, WITHOUT THE PRIOR WRITTEN CONSENT OF LUCIEN T. VIVIEN, JR., & ASSOC., INC.

THESE PLANS AND SPECIFICATIONS HAVE BEEN PREPARED BY OR UNDER OUR CLOSE PERSONAL SUPERVISION AND, TO THE BEST OF OUR KNOWLEDGE AND BELIEF, THEY COMPLY WITH ALL CITY REQUIREMENTS. WE ARE GENERALLY ADMINISTERING THE WORK.

LUCIEN T. VIVIEN, JR., & ASSOC., INC.  
PER: *Lucien Eugene Vivien*  
REG. NO. 7955