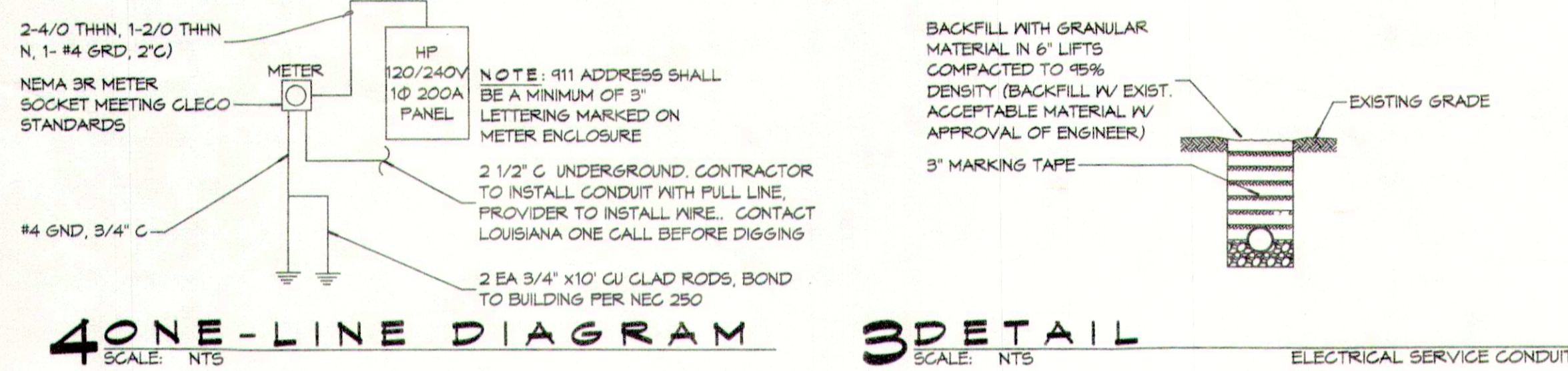
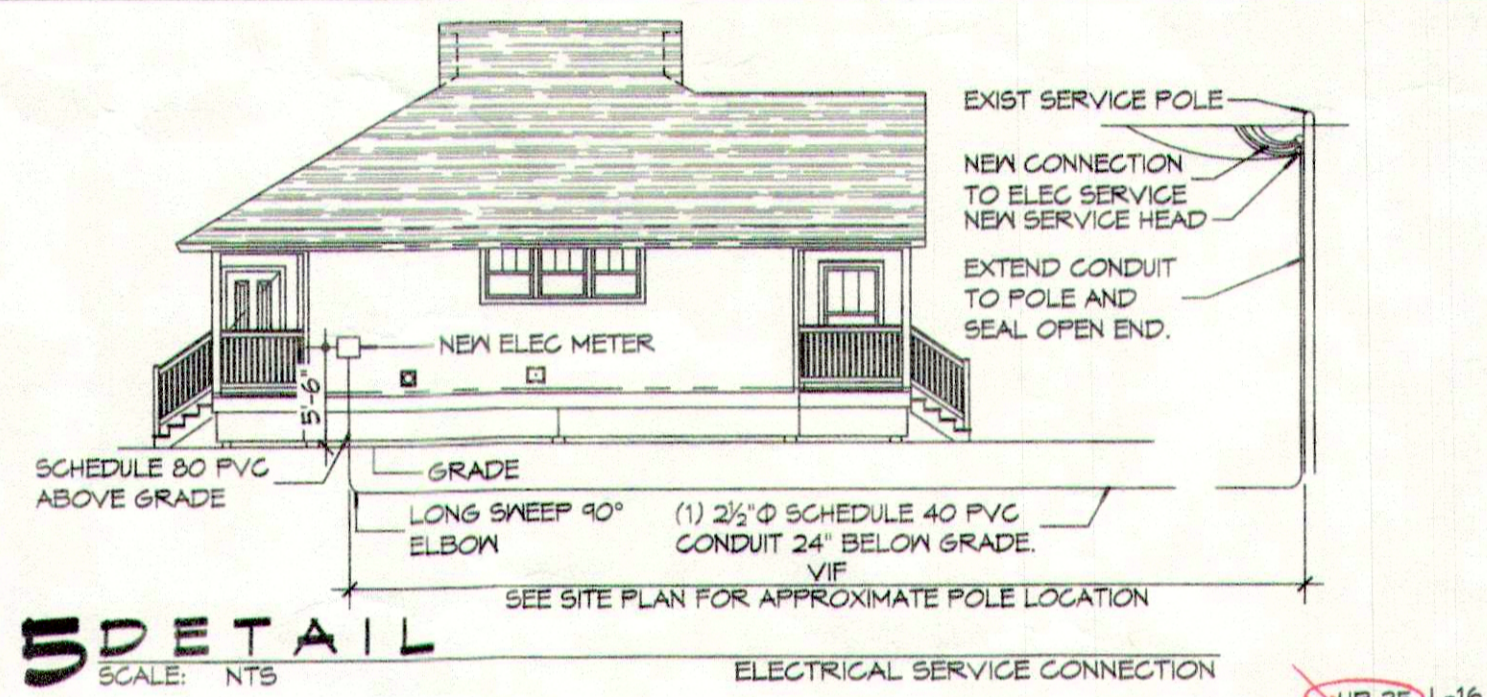


PANEL: HOUSE (HP)
LOCATION: UTILITY ROOM
FEEDER SOURCE: CLECO

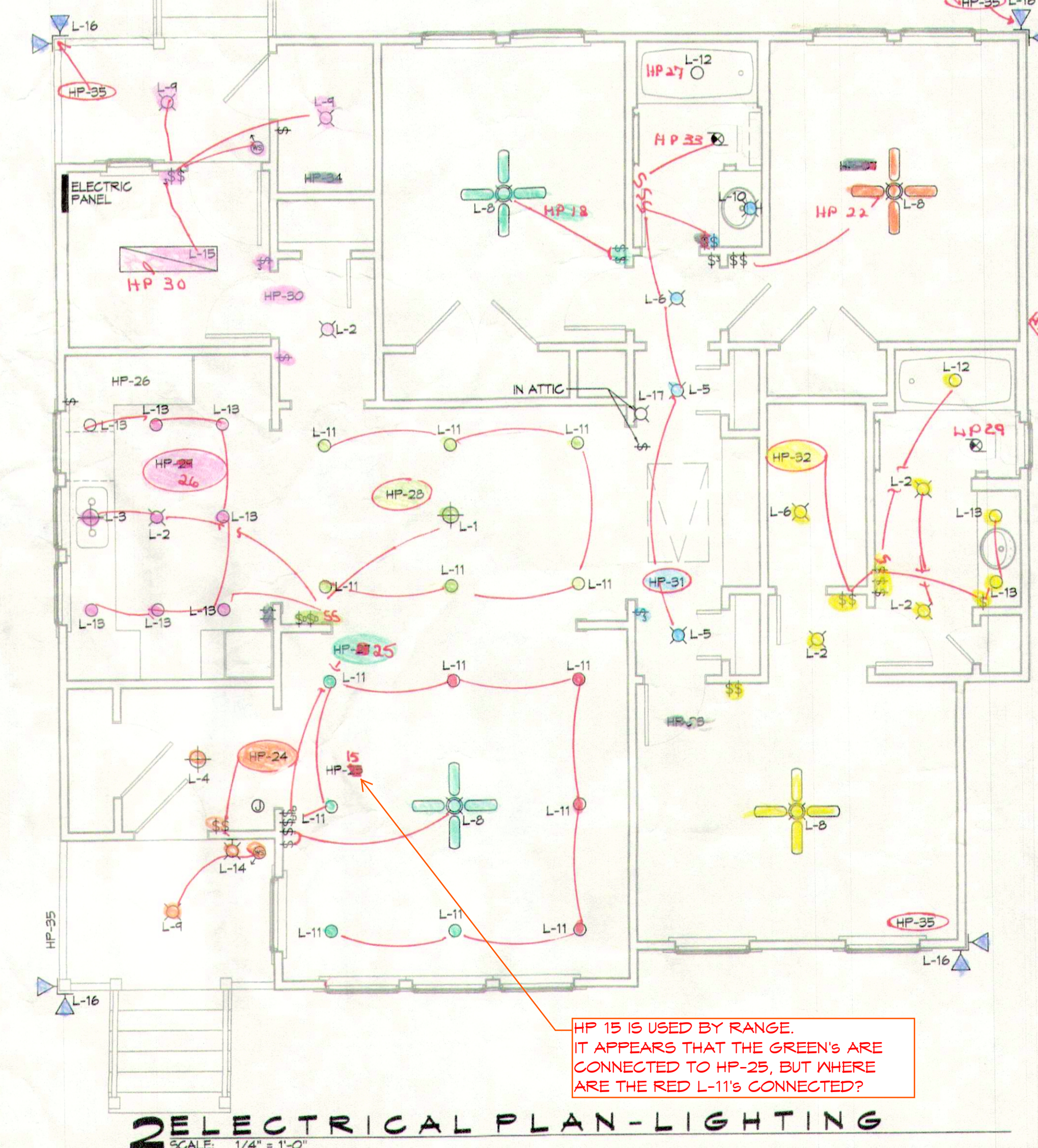
VOLTAGE: 120/240V, 1Ø, 3Ø
ENCLOSURE: FLUSH MOUNTED 225A LOADCENTER, 22K AIC, 200A MB, EQUIPMENT GND BAR

CKT. NO.	THIN WIRE SIZE	LOAD DESCRIPTION LOCATION	BREAKER AMP POLE	LOAD (VA)		BREAKER AMP POLE	LOAD DESCRIPTION LOCATION	THIN WIRE SIZE	CKT. NO.
				AD	BD				
1	Ø	A/C CONDENSING UNIT 3 1/2 TON 1.53 kW	40 2	9120	6860	2 60	AIR HANDLING UNIT 3 1/2 TON 10kW	6	2
3	Ø	WATER HEATER 50 GALLON	40 2	9120	6860	2 60	GRINDER PUMP/LIFT STATION	12	4
5	Ø	DINING ROOM 1Ø4 RECEPTACLES & DOOR BELL	20 1	4500	1300	2 20	DEDICATED REFRIGERATOR RECEPTACLE	12	6
7	Ø	BATHROOM 11Ø & MASTERBATH 11Ø GFI RECEPTACLES	20 1	800	160	1 20	JUNCTION BOX FOR RANGE EXHAUST	12	8
11	12	LIVING ROOM 1Ø5 GFI RECEPTACLES	20 1	800	1400	1 20	DRYER	12	10
13	12	LIVING ROOM 1Ø5 CAN LIGHTS	20 1	4800	2500	2 30	BEFORE 1/Ø ROOM 111 & CLOSET 112 RECEPTACLES	12	12
15	12	LIVING ROOM 1Ø5 CAN LIGHTS	20 1	4800	2500	2 30	BEFORE 1/Ø ROOM 111 & CLOSET 112 RECEPTACLES	12	14
17	12	LIVING ROOM 1Ø5 CAN LIGHTS	20 1	4800	2500	2 30	BEFORE 1/Ø ROOM 111 & CLOSET 112 RECEPTACLES	12	16
19	12	LIVING ROOM 1Ø5 CAN LIGHTS	20 1	4800	2500	2 30	BEFORE 1/Ø ROOM 111 & CLOSET 112 RECEPTACLES	12	18
21	12	LIVING ROOM 1Ø5 CAN LIGHTS	20 1	4800	2500	2 30	BEFORE 1/Ø ROOM 111 & CLOSET 112 RECEPTACLES	12	20
23	12	LIVING ROOM 1Ø5 CAN LIGHTS	20 1	4800	2500	2 30	BEFORE 1/Ø ROOM 111 & CLOSET 112 RECEPTACLES	12	22
25	12	LIVING ROOM 1Ø5 CAN LIGHTS	20 1	4800	2500	2 30	BEFORE 1/Ø ROOM 111 & CLOSET 112 RECEPTACLES	12	24
27	12	LIVING ROOM 1Ø5 CAN LIGHTS	20 1	4800	2500	2 30	BEFORE 1/Ø ROOM 111 & CLOSET 112 RECEPTACLES	12	26
29	12	LIVING ROOM 1Ø5 CAN LIGHTS	20 1	4800	2500	2 30	BEFORE 1/Ø ROOM 111 & CLOSET 112 RECEPTACLES	12	28
31	12	LIVING ROOM 1Ø5 CAN LIGHTS	20 1	4800	2500	2 30	BEFORE 1/Ø ROOM 111 & CLOSET 112 RECEPTACLES	12	30
33	12	LIVING ROOM 1Ø5 CAN LIGHTS	20 1	4800	2500	2 30	BEFORE 1/Ø ROOM 111 & CLOSET 112 RECEPTACLES	12	32
35	12	LIVING ROOM 1Ø5 CAN LIGHTS	20 1	4800	2500	2 30	BEFORE 1/Ø ROOM 111 & CLOSET 112 RECEPTACLES	12	34
37	12	LIVING ROOM 1Ø5 CAN LIGHTS	20 1	4800	2500	2 30	BEFORE 1/Ø ROOM 111 & CLOSET 112 RECEPTACLES	12	36
39	12	LIVING ROOM 1Ø5 CAN LIGHTS	20 1	4800	2500	2 30	BEFORE 1/Ø ROOM 111 & CLOSET 112 RECEPTACLES	12	38
41	12	LIVING ROOM 1Ø5 CAN LIGHTS	20 1	4800	2500	2 30	BEFORE 1/Ø ROOM 111 & CLOSET 112 RECEPTACLES	12	40
43	12	LIVING ROOM 1Ø5 CAN LIGHTS	20 1	4800	2500	2 30	BEFORE 1/Ø ROOM 111 & CLOSET 112 RECEPTACLES	12	42
				TOTAL CONNECTED LOAD (VA) = 4,555					

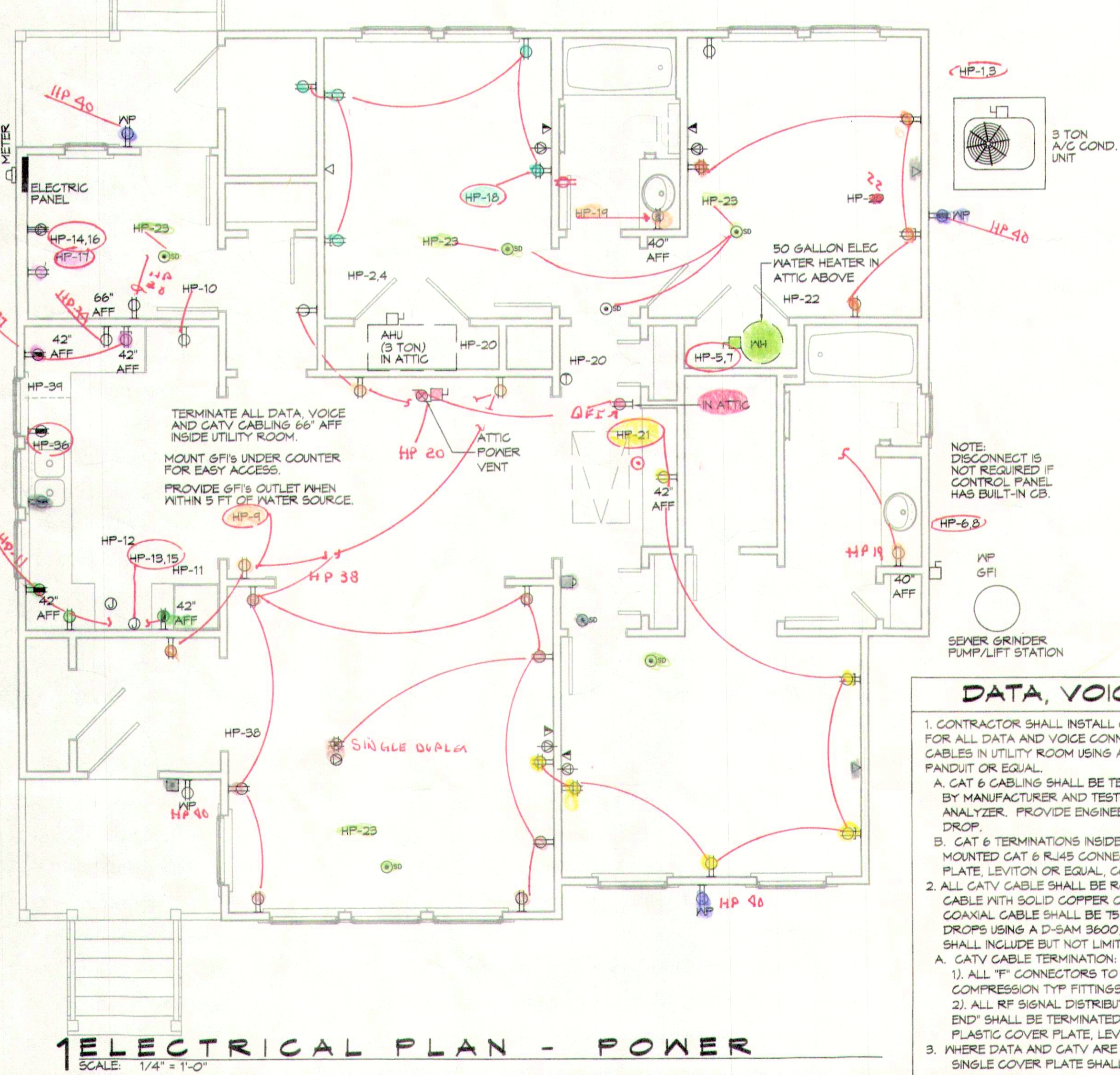


4 ONE-LINE DIAGRAM
SCALE: NTS

3 DETAIL
SCALE: NTS



2 ELECTRICAL PLAN-LIGHTING
SCALE: 1/4" = 1'-0"



1 ELECTRICAL PLAN - POWER
SCALE: 1/4" = 1'-0"

LUMINAIR SCHEDULE

ID	DESCRIPTION	MOUNTING	MFR	PART #	FINISH	LAMPS #	LAMP TYPE	WATTAGE	FIXTURE NOTES	INSTALLATION NOTES
L-1	4-LIGHT CHANDELIER	SURFACE	LEBAGH	3461Ø	BRUSHED NICKEL	4	HALOGEN 60W E26	160		HARDWIRED
L-10	SHELDON COLLECTION BATH BAR	WALL	HAMPTON BAY	5Ø11Ø5BA	BRUSHED NICKEL	4	A19 LED BULB 1/Ø E-26 MEDIUM BASE	240		HARDWIRED
L-11	AIRTIGHT IC RATED RECESSED HOUSING 1/Ø LIGHT TRIM	RECESSED	HALO	35667Ø	WHITE	1	A19 LED BULB 1/Ø E-26 MEDIUM BASE	90	HOUSING: JUNO #Ø7543 AIRTIGHT IC RATED	HARDWIRED
L-12	AIRTIGHT IC RATED RECESSED HOUSING 1/Ø SHOWER LIGHT TRIM	RECESSED	JUNO	5466Ø	WHITE	1	A19 LED BULB 1/Ø E-26 MEDIUM BASE	240	HOUSING: JUNO #Ø7543 AIRTIGHT IC RATED	HARDWIRED
L-13	AIRTIGHT IC RATED RECESSED HOUSING 1/Ø OPEN LIGHT TRIM	RECESSED	UTLITECH	4ØØ54Ø	WHITE	1	A19 LED BULB 1/Ø E-26 MEDIUM BASE	240	HOUSING: JUNO #Ø7543 AIRTIGHT IC RATED	HARDWIRED
L-14	OUTDOOR WALL-MOUNT LIGHT	WALL	PROGRESS LIGHTING	56544Ø	BRUSHED NICKEL	1	A19 LED BULB 1/Ø E-26 MEDIUM BASE	125		HARDWIRED
L-15	CEILING FLUORESCENT LIGHT	SURFACE	PORTFOLIO	ØL454Ø-4T Ø-BA	BRUSHED ALUM	4	T8 LED	125		HARDWIRED
L-16	18Ø DEG MOTION-ACTIVATED FLOOD LIGHT 1/Ø TIMER	FLUSH	UTLITECH	ØT-5412-1/Ø	WHITE	2	PAR3Ø 1/Ø MEDIUM BASE (E-26)	240	LED LAMPS	HARDWIRED, MOUNT IN SOFFIT
L-17	INCANDESCENT LAMPHOLDER	SURFACE	LEVITON	Ø875	WHITE	1	A19 LED BULB 1/Ø E-26 MEDIUM BASE	75-1ØØ	INSTALL IN ATTIC	HARDWIRED
L-2	15 IN CEILING MOUNT FIXTURE	SURFACE	BELL AIR LIGHTING	13ØØ2ØN	BRUSHED NICKEL	3	A19 LED BULB 1/Ø E-26 MEDIUM BASE	180		HARDWIRED
L-3	1/Ø IN CEILING MOUNT PENDANT	PENDANT	PROGRESS LIGHTING	P5167-Ø1	BRUSHED NICKEL	1	A19 LED BULB 1/Ø E-26 MEDIUM BASE	100		HARDWIRED
L-4	SEMI-FLUSH MOUNT LIGHT	SEMI-FLUSH	WIKHLER	DVPØ112ØN	BRUSHED NICKEL	2	A19 LED BULB 1/Ø E-26 MEDIUM BASE	200		HARDWIRED
L-5	ALBION SERIES 6" SEMI-FLUSH MOUNT LIGHT	SEMI-FLUSH	Z-LITE	1Ø1-6Ø-5F	BRUSHED NICKEL	2	A19 LED BULB 1/Ø E-26 MEDIUM BASE	60		HARDWIRED
L-6	CEILING MOUNTED FIXTURE	FLUSH	PROGRESS LIGHTING	Ø341Ø-Ø1	BRUSHED NICKEL	2	A19 LED BULB 1/Ø E-26 MEDIUM BASE	60		HARDWIRED
L-8	WINDMERE SERIES CEILING FAN 1/Ø LIGHT KIT	DOWNROD	HUNTER	5ØØ31	BRUSHED NICKEL	2	B1Ø BULB 1/Ø E-12 CANDELABRA BASE	40		HARDWIRED
L-9	OUTDOOR FLUSH-MOUNT LIGHT	FLUSH	VOLUME INTERNATIONAL	VØ7Ø-6	WHITE	1	A19 LED BULB 1/Ø E-26 MEDIUM BASE	1ØØ-6Ø	PROVIDE COMPATIBLE LED LAMP	HARDWIRED

GENERAL ELECTRICAL NOTES

- DRAWINGS ARE DIAGRAMMATIC ONLY. FURNISH ALL CONDUIT, WIRING, PANELS, BREAKERS, DISCONNECTS, ACCESSORIES, ETC. FOR COMPLETE INSTALLATION. RATHER OR NOT EVERY ITEM IS SHOWN OR SPECIFIED.
- THESE DRAWINGS ARE INTENDED AS GENERAL GUIDELINES FOR PURPOSES OF ESTABLISHING CERTAIN MIN. CRITERIA, AND DO NOT NECESSARILY REPRESENT THE FINAL LAYOUT, ARRANGEMENT, SIZE, BRAND NAME, CAPACITY OR OTHER CHARACTERISTICS OF THE ENGINEERED SYSTEM. SYSTEM SHALL BE DESIGNED IN ACCORDANCE WITH ALL APPLICABLE CODES, STANDARDS AND REQUIREMENTS OF LOCAL UTILITY OFFICIALS.
- INSTALL GFI OUTLETS AS REQUIRED BY APPLICABLE CODES. INSTALL GROUND FAULT RECEPTACLES AT RECEPTACLE LOCATIONS WITHIN 5' OF SINKS OR LAVATORIES, AND AT EXTERIOR LOCATIONS. EXTERIOR RECEPTACLES SHALL ALSO BE WEATHERPROOF.
- INSTALL HARDWIRED SMOKE DETECTORS WITH BATTERY BACKUP AS REQUIRED. INTER-CONNECT DETECTORS SO THAT ALL WILL SOUND SHOULD ONE DETECTOR ACTIVATE.
- SOME EQUIPMENT SHOWN ON OTHER PLANS MAY REQUIRE ELECTRICAL SERVICE, SUCH AS WATER HEATER, CONDENSING UNITS, AIR-HANDLING UNITS, CONDENSATE PUMPS, ETC.. ELECTRICAL CONTRACTOR SHALL INCLUDE ELECTRICAL SERVICE TO ALL SUCH EQUIPMENT. COORDINATE WITH OTHER TRADES CONCERNING ITEMS REQUIRING ELECTRICAL SERVICE. PROVIDE ONE DUPLEX OUTLET AND LIGHT IF UNIT IS IN NON-LIT AREA FOR EVERY CONDENSING UNIT AND EVERY AIR-HANDLING UNIT AS REQUIRED BY APPLICABLE CODES.
- OBTAIN NAME PLATE AND RATING OF ALL EQUIPMENT BEFORE ROUGHING IN AND PROVIDE WIRING OF PROPER SIZE, VOLTAGE, AND AMPACITY. PROVIDE FUSED OR NON-FUSED DISCONNECT SWITCH AS REQUIRED.
- PROVIDE PANEL BOARDS OF PROPER VOLTAGE AND AMPACITY FOR ALL ELECTRICAL CIRCUITS.
- VERIFY SERVICE REQUIREMENTS WITH LOCAL POWER COMPANY INCLUDING TRANSFORMER LOCATIONS AND TYPES, DISCONNECTS AT EXTERIOR OF BLDG., VOLTS AND AMPACITIES AND OTHER DETAILS OF ELECTRICAL CONSTRUCTION. SIZE ALL FEEDERS ACCORDING TO NEC REQUIREMENTS.
- RUN ALL CABLE CONCEALED IN WALLS, CEILING OR FLOORS UNLESS NOTED OTHERWISE.
- SUPPORT ALL FIXTURES AND OTHER ITEMS RIGIDLY FROM STRUCTURE.
- INSULATE AND SEAL SOLIDLY BEHIND RECEPTACLES IN EXTERIOR WALLS.
- ALL SWITCHES AND OUTLETS ON FIRST FLOOR TO BE 1'-0" ABOVE BASE FLOOD ELEVATION.
- WHERE MORE THAN ONE SWITCH OCCURS IN THE SAME LOCATION, THEY SHALL BE INSTALLED IN A GANG TYPE BOX UNDER ONE COVER PLATE.
- ALL OUTLETS SHALL BE INSTALLED 1Ø" AFF UNLESS NOTED OTHERWISE. SEE ELECTRICAL POWER PLAN FOR INDICATED MOUNTING HEIGHT.
- REFER TO REFLECTED CEILING PLAN FOR RECESSED LIGHT FIXTURE LOCATIONS. ALL CEILING PENETRATIONS SHALL BE SEALED TO PREVENT THE MOVEMENT OF AIR AND MOISTURE.
- ALL 120V 1ØA AND 2ØA OUTLETS SHALL BE ARC-FAULT CIRCUIT INTERRUPTER COMPLIANT.

GENERAL UTILITY NOTES

- SCH. 80 PVC CONDUIT WHERE PIPE IS EXPOSED ABOVE GRADE. TRANSITION TO SCH. 40 PVC BELOW GRADE. ALL 90° ELBOWS TO BE LONG SNEEP TYPE.
- 120/240V 1Ø 200A SERVICE FROM UTIL. CO., FEEDER BY UTIL. CO TO METER BOX. FIELD LOCATE TRANSFORMER ON POLE AND COORDINATE WITH ELEC. COMPANY REGARDING NEW ELECTRICAL SERVICE CONNECTION.
- CONTACT LOUISIANA ONE CALL BEFORE DIGGING.

ELECTRICAL POWER LEGEND

Ø	DUPLEX OUTLET	Ø	220 VOLT DRYER OUTLET
42" AFF	COUNTER-HIT DUPLEX OUTLET	Ø	120V SMOKE DETECTOR 1/Ø VDC BATTERY BACKUP
Ø	QUAD OUTLET	Ø	COAXIAL OUTLET
Ø	DUPLEX OUTLET 1/Ø USB CHARGER	Ø	THERMOSTAT
Ø	FLOOR QUAD OUTLET	Ø	DISCONNECT DOOR BELL
Ø	FLOOR TELEPHONE BOX	Ø	JUNCTION BOX
Ø	DATA OUTLET (WALL)	Ø	DOOR BELL JUNCTION BOX
Ø	TELEPHONE OUTLET (WALL)	Ø	DOOR BELL
Ø	GROUND FAULT INTERRUPTER (GFI)	Ø	WIRING CONCEALED IN CEILING OR WALL
Ø	GFI OUTLET 1/Ø WEATHER PROOF COVER	Ø	WIRING CONCEALED IN FLOOR
Ø	METER	Ø	EXPOSED WIRING
Ø	LINE VOLTAGE THERMOSTAT	Ø	HOME RUN TO PANEL BOARD

ELECTRICAL LIGHTING LEGEND

Ø	FAN/LIGHT COMBINATION	Ø	WALL MOUNTED LIGHT FIXTURE
Ø	RECESSED LIGHT FIXTURE (Ø")	Ø	WALL SWITCH - SINGLE POLE
Ø	SURFACE MOUNTED LIGHT FIXTURE	Ø	WALL SWITCH - THREE-WAY
Ø	PENDANT LIGHT FIXTURE	Ø	WALL SWITCH - DIMMER
Ø	EXHAUST FAN	Ø	MOTION ACTIVATED FLOOD LIGHT
Ø	EXHAUST FAN/HEATER	Ø	EXHAUST FAN/HEATER
Ø	EXHAUST FAN/HEATER/LITE	Ø	MOTION SENSOR 1/Ø PHOTOCELL

DAMMON ENGINEERING, INC.
LOUISIANA & MISSISSIPPI
Chief Engineer: Brian Westrich, PE
554 Old Spanish Trail
Slidell, LA 70458
www.dammonengineering.com
info@dammonengineering.com
PH: 985.649.5832

CAMP VILLERE NEW HOME CONSTRUCTION
LA 14-037
CAMP VILLERE, LOUISIANA
2210 DATE: OCTOBER 8, 2014
JOB NO: KIK (CHECKED BY: CWD)
DRAWN BY: J

SHEET TITLE: ELECTRICAL PLANS - POWER, LIGHTING, AND PANEL DIAGRAMS
DRAWING NUMBER: **M1**
SHEET No: 10 of 12

As-Built Drawings