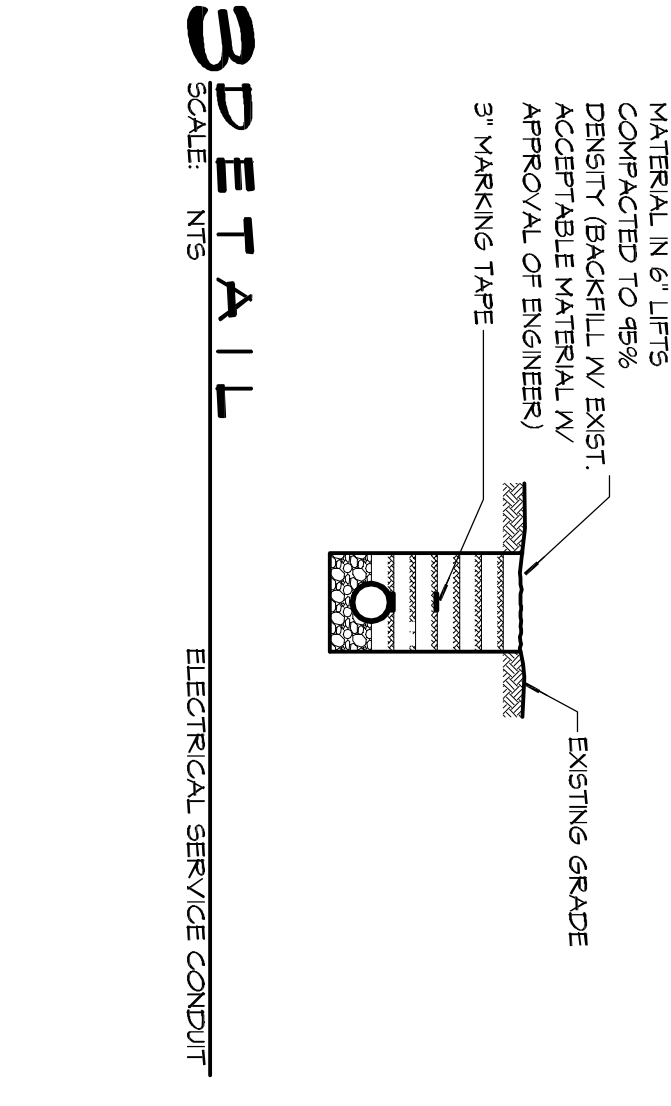
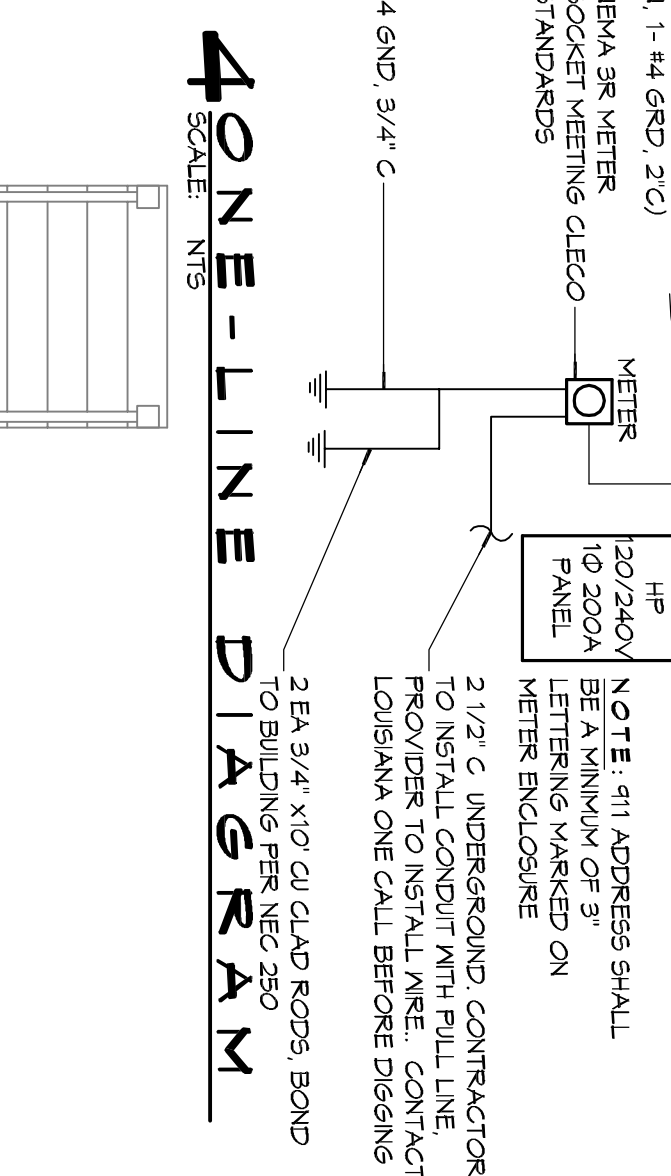
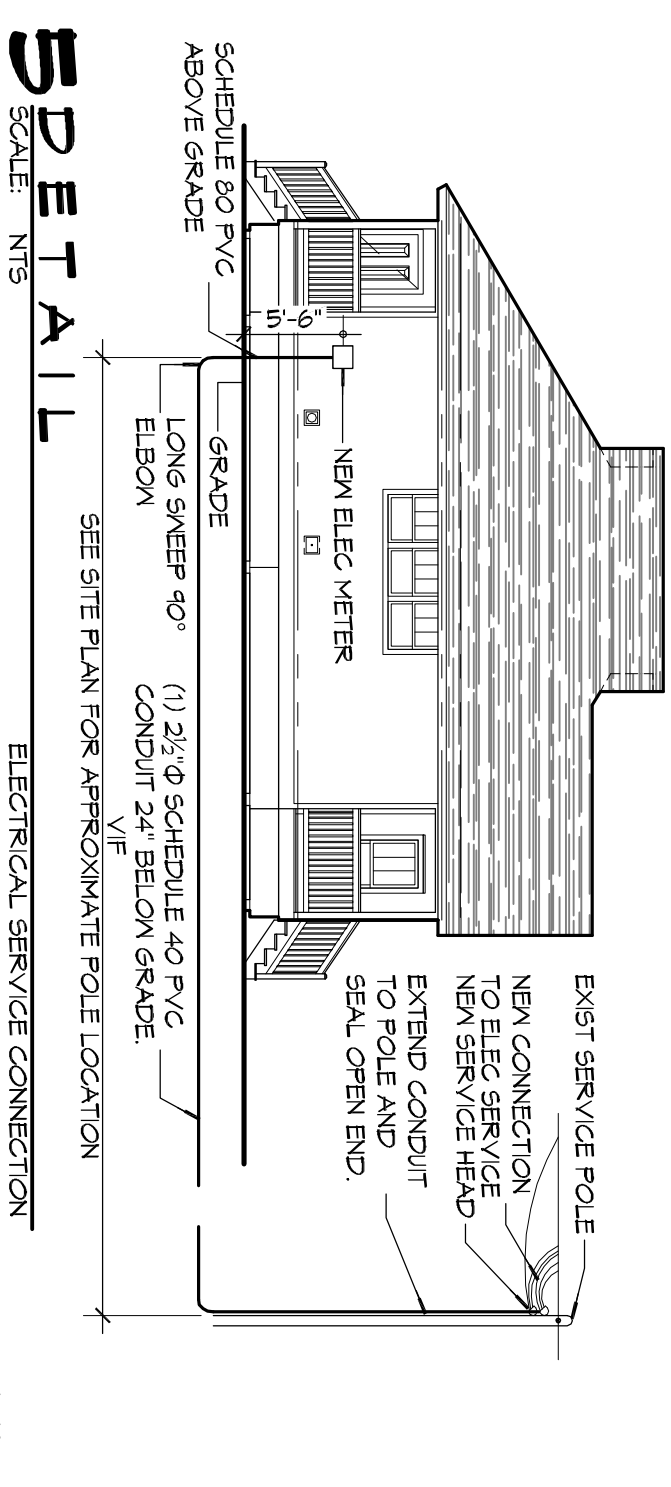


PKT. NO.	THIN	LOAD DESCRIPTION	BREAKER	LOAD	NO.	NO.	LOAD	BREAKER	LOAD DESCRIPTION	THIN
NO.	SIZE	LOCATION	AMP	POLE (VA)	NO.	NO.	POLE AMP	LOCATION	NO.	NO.
1	0	4-1/2" COPPER/ALUM. 3/2" TON 120V	40	3120	2	2	40	4-1/2" COPPER/ALUM. 3/2" TON 120V	2	2
2	0	WATER HEATER 50 GALLON	40	3120	2	2	40	WATER HEATER 50 GALLON	2	2
3	0	DINING ROOM 104 RECEPTACLES	40	3120	2	2	40	DINING ROOM 104 RECEPTACLES	2	2
4	0	KITCHEN 103 COUNTER-HIGH 90	40	3120	2	2	40	KITCHEN 103 COUNTER-HIGH 90	2	2
5	0	DINING ROOM 104 RECEPTACLES	40	3120	2	2	40	DINING ROOM 104 RECEPTACLES	2	2
6	0	JUNCTION BOX FOR RANGE	40	3120	2	2	40	JUNCTION BOX FOR RANGE	2	2
7	0	DINING ROOM 104 RECEPTACLES	40	3120	2	2	40	DINING ROOM 104 RECEPTACLES	2	2
8	0	BATHROOM 113 1 W/RECEPTANT 110	40	3120	2	2	40	BATHROOM 113 1 W/RECEPTANT 110	2	2
9	0	LIVING ROOM 103 W/RECEPTANT 110	40	3120	2	2	40	LIVING ROOM 103 W/RECEPTANT 110	2	2
10	0	LIVING ROOM 103 W/RECEPTANT 110	40	3120	2	2	40	LIVING ROOM 103 W/RECEPTANT 110	2	2
11	0	LIVING ROOM 103 W/RECEPTANT 110	40	3120	2	2	40	LIVING ROOM 103 W/RECEPTANT 110	2	2
12	0	LIVING ROOM 103 W/RECEPTANT 110	40	3120	2	2	40	LIVING ROOM 103 W/RECEPTANT 110	2	2
13	0	LIVING ROOM 103 W/RECEPTANT 110	40	3120	2	2	40	LIVING ROOM 103 W/RECEPTANT 110	2	2
14	0	LIVING ROOM 103 W/RECEPTANT 110	40	3120	2	2	40	LIVING ROOM 103 W/RECEPTANT 110	2	2
15	0	LIVING ROOM 103 W/RECEPTANT 110	40	3120	2	2	40	LIVING ROOM 103 W/RECEPTANT 110	2	2
16	0	LIVING ROOM 103 W/RECEPTANT 110	40	3120	2	2	40	LIVING ROOM 103 W/RECEPTANT 110	2	2
17	0	LIVING ROOM 103 W/RECEPTANT 110	40	3120	2	2	40	LIVING ROOM 103 W/RECEPTANT 110	2	2
18	0	LIVING ROOM 103 W/RECEPTANT 110	40	3120	2	2	40	LIVING ROOM 103 W/RECEPTANT 110	2	2
19	0	LIVING ROOM 103 W/RECEPTANT 110	40	3120	2	2	40	LIVING ROOM 103 W/RECEPTANT 110	2	2
20	0	LIVING ROOM 103 W/RECEPTANT 110	40	3120	2	2	40	LIVING ROOM 103 W/RECEPTANT 110	2	2
21	0	LIVING ROOM 103 W/RECEPTANT 110	40	3120	2	2	40	LIVING ROOM 103 W/RECEPTANT 110	2	2
22	0	LIVING ROOM 103 W/RECEPTANT 110	40	3120	2	2	40	LIVING ROOM 103 W/RECEPTANT 110	2	2
23	0	LIVING ROOM 103 W/RECEPTANT 110	40	3120	2	2	40	LIVING ROOM 103 W/RECEPTANT 110	2	2
24	0	LIVING ROOM 103 W/RECEPTANT 110	40	3120	2	2	40	LIVING ROOM 103 W/RECEPTANT 110	2	2
25	0	LIVING ROOM 103 W/RECEPTANT 110	40	3120	2	2	40	LIVING ROOM 103 W/RECEPTANT 110	2	2
26	0	LIVING ROOM 103 W/RECEPTANT 110	40	3120	2	2	40	LIVING ROOM 103 W/RECEPTANT 110	2	2
27	0	LIVING ROOM 103 W/RECEPTANT 110	40	3120	2	2	40	LIVING ROOM 103 W/RECEPTANT 110	2	2
28	0	LIVING ROOM 103 W/RECEPTANT 110	40	3120	2	2	40	LIVING ROOM 103 W/RECEPTANT 110	2	2
29	0	LIVING ROOM 103 W/RECEPTANT 110	40	3120	2	2	40	LIVING ROOM 103 W/RECEPTANT 110	2	2
30	0	LIVING ROOM 103 W/RECEPTANT 110	40	3120	2	2	40	LIVING ROOM 103 W/RECEPTANT 110	2	2
31	0	LIVING ROOM 103 W/RECEPTANT 110	40	3120	2	2	40	LIVING ROOM 103 W/RECEPTANT 110	2	2
32	0	LIVING ROOM 103 W/RECEPTANT 110	40	3120	2	2	40	LIVING ROOM 103 W/RECEPTANT 110	2	2
33	0	LIVING ROOM 103 W/RECEPTANT 110	40	3120	2	2	40	LIVING ROOM 103 W/RECEPTANT 110	2	2
34	0	LIVING ROOM 103 W/RECEPTANT 110	40	3120	2	2	40	LIVING ROOM 103 W/RECEPTANT 110	2	2
35	0	LIVING ROOM 103 W/RECEPTANT 110	40	3120	2	2	40	LIVING ROOM 103 W/RECEPTANT 110	2	2
36	0	LIVING ROOM 103 W/RECEPTANT 110	40	3120	2	2	40	LIVING ROOM 103 W/RECEPTANT 110	2	2
37	0	LIVING ROOM 103 W/RECEPTANT 110	40	3120	2	2	40	LIVING ROOM 103 W/RECEPTANT 110	2	2
38	0	LIVING ROOM 103 W/RECEPTANT 110	40	3120	2	2	40	LIVING ROOM 103 W/RECEPTANT 110	2	2
39	0	LIVING ROOM 103 W/RECEPTANT 110	40	3120	2	2	40	LIVING ROOM 103 W/RECEPTANT 110	2	2
40	0	LIVING ROOM 103 W/RECEPTANT 110	40	3120	2	2	40	LIVING ROOM 103 W/RECEPTANT 110	2	2
41	0	LIVING ROOM 103 W/RECEPTANT 110	40	3120	2	2	40	LIVING ROOM 103 W/RECEPTANT 110	2	2
42	0	LIVING ROOM 103 W/RECEPTANT 110	40	3120	2	2	40	LIVING ROOM 103 W/RECEPTANT 110	2	2
TOTAL CONNECTED LOAD (VA) 68,688			4000/1000		20/10		4000/1000		20/10	

VOLTAGE: 120/240V, 1Ø, 3Ø
 ENCLOSURE: FLUSH MOUNTED 200A LOADCENTER, 22K AC
 200A W/4 EQUIPMENT GND BAR



ID	DESCRIPTION	MOUNTING	FINISH	LAMPS	LAMP TYPE	VOLTAGE	FEATURE NOTES	INSTALLATION NOTES
L-1	4-LIGHT CHANDELER	FLUSH	BRUSHED NICKEL	4	PAR38 W/MEDIUM BASE (E-26)	120	PROVIDE COMPATIBLE LED LAMP	HARDWIRED
L-10	SHIELDON COLLECTION BATH BAR LIGHT TRIM	WALL	NICKEL	4	AIR LED BULB W/ E-26	160		HARDWIRED
L-11	AIRIGHT C RATED RECESSED HOUSING W/ LIGHT TRIM	RECESSED	WHITE	1	AIR LED BULB W/ E-26	240		HARDWIRED
L-11	AIRIGHT C RATED RECESSED HOUSING W/ SHOWER LIGHT TRIM	RECESSED	WHITE	1	AIR LED BULB W/ E-26	240		HARDWIRED
L-12	AIRIGHT C RATED RECESSED HOUSING W/ OPEN LIGHT TRIM	RECESSED	WHITE	1	AIR LED BULB W/ E-26	240		HARDWIRED
L-13	CEILING FLUORESCENT LIGHT	FLUSH	BRUSHED ALUM	4	PAR38 W/MEDIUM BASE (E-26)	240		HARDWIRED
L-14	150 DSS VOTON-ACTIVATED FLOOD LIGHT W/ TRIM	FLUSH	WHITE	2	INSTALL IN ATTIC	75		HARDWIRED
L-15	ICANDESCENT LAMPHOLDER	FLUSH	BRUSHED NICKEL	3	AIR LED BULB W/ E-26	180		HARDWIRED
L-16	15 N CEILING MOUNT FIXTURE	PENDANT	BRUSHED NICKEL	1	AIR LED BULB W/ E-26	100		HARDWIRED
L-17	WIGTEN 3 7/8\"/>							
L-18	SEMI-FLUSH MOUNT LIGHT	SEMI-FLUSH	BRUSHED NICKEL	2	AIR LED BULB W/ E-26	60		HARDWIRED
L-19	ABION SERIES 6\"/>							
L-20	CEILING MOUNTED FIXTURE	FLUSH	BRUSHED NICKEL	2	AIR LED BULB W/ E-26	60		HARDWIRED
L-21	WINDWIRE SERIES CEILING FAN W/ LIGHT KIT	DOWNROD	BRUSHED NICKEL	2	BIO BULB W/ E-12 CANDELABRA BASE	40		HARDWIRED
L-22	OUTDOOR FLUSH-MOUNT LIGHT	FLUSH	WHITE	1	AIR LED BULB W/ E-26	100		HARDWIRED

ELECTRICAL NOTES

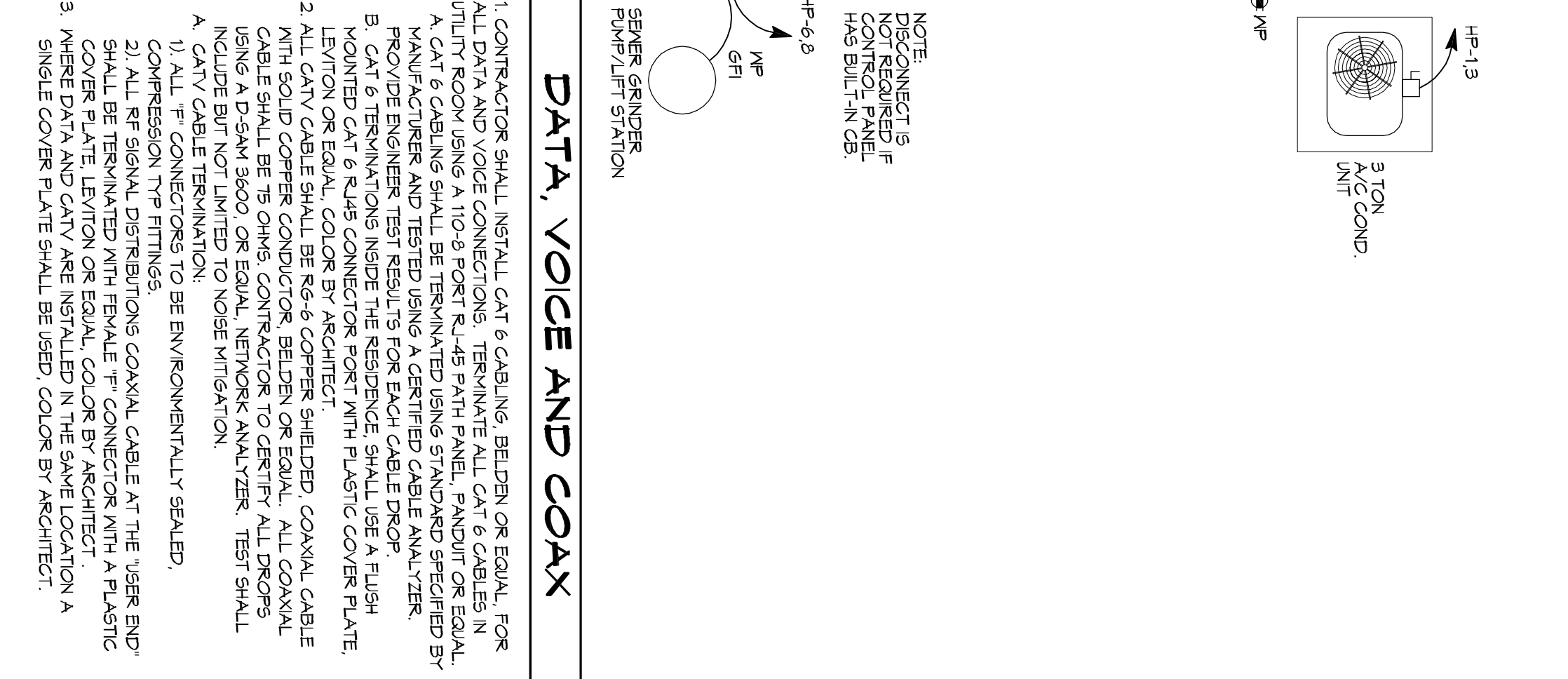
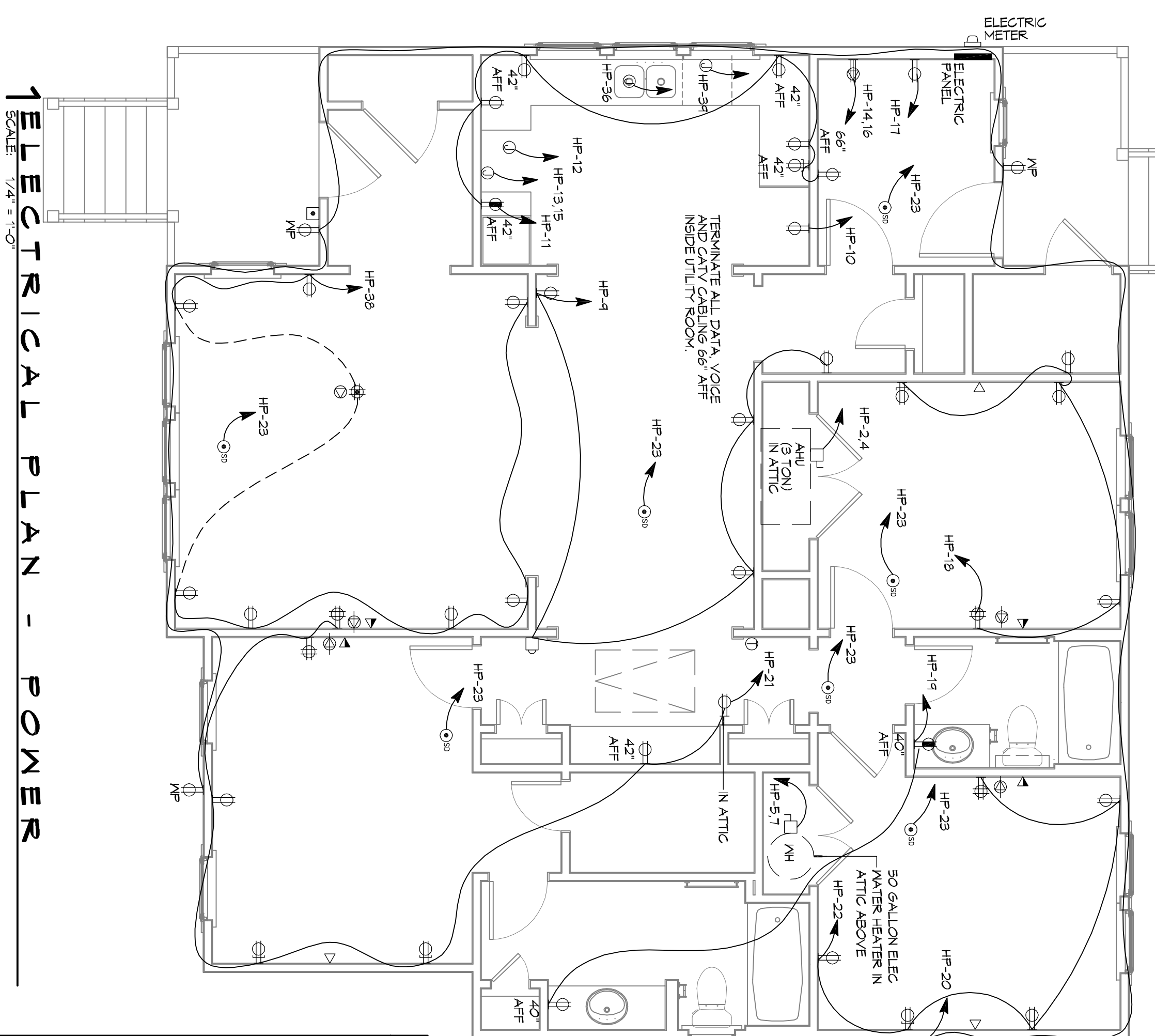
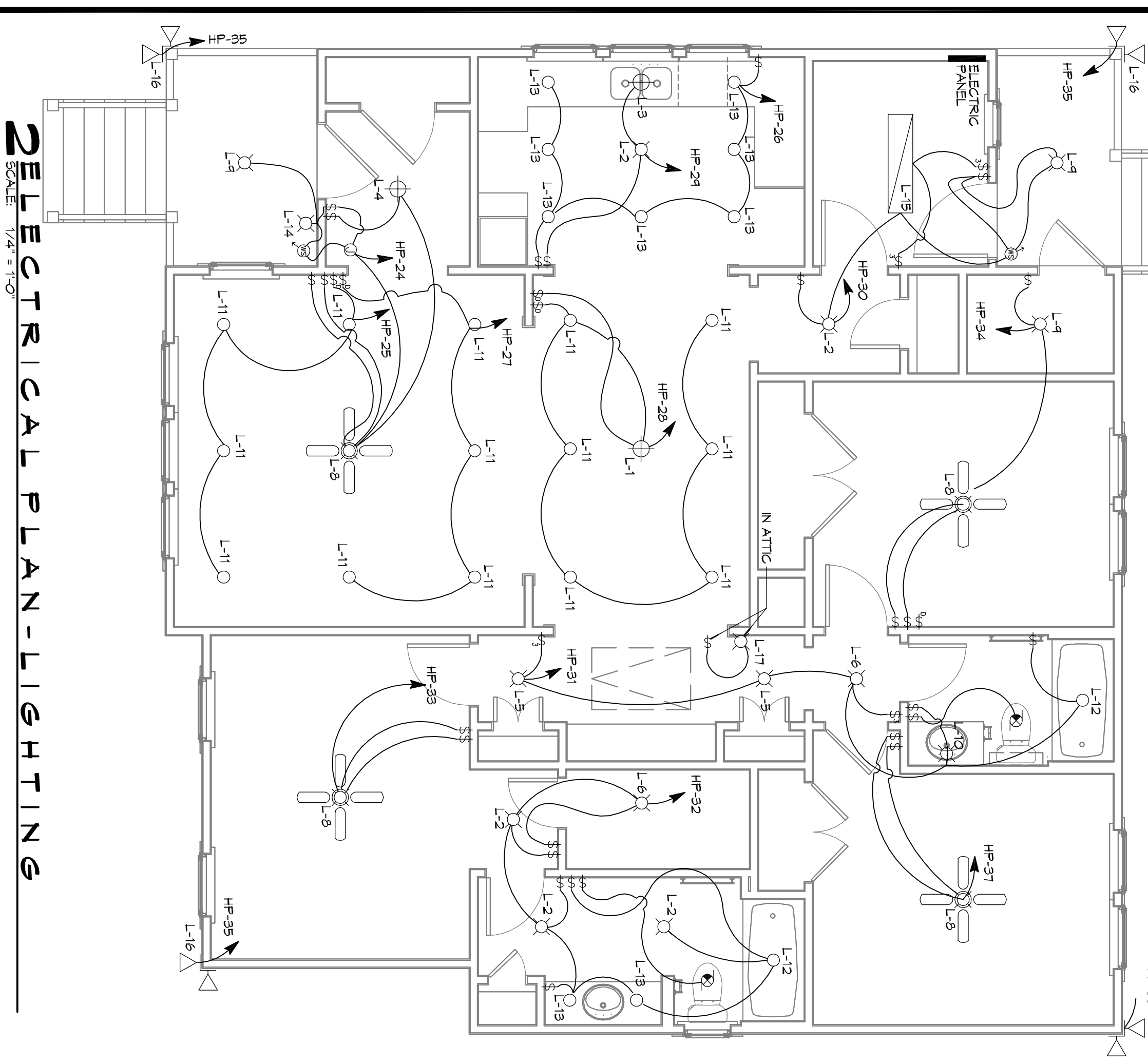
- DRAWINGS ARE PARAMETRIC ONLY. FINISH ALL CONDUIT, WIRING, PANELS, BREAKERS, DISCONNECTS, ACCESSORIES, ETC. FOR COMPLETE INSTALLATION. RATHER OR NOT EVERY ITEM IS SHOWN OR SPECIFIED. THESE DRAWINGS ARE INTENDED AS GENERAL GUIDELINES FOR PREPARATION OF ESTIMATING CERTAIN MATERIALS, ORDERING AND DO NOT NECESSARILY REPRESENT THE FINAL LAYOUT. ARRANGEMENT, SIZE, BRAND NAME, CAPACITY OR OTHER CHARACTERISTICS OF THE ENGINEERED SYSTEM, SYSTEM SHALL BE DESIGNED IN ACCORDANCE WITH ALL APPLICABLE CODES, STANDARDS AND REQUIREMENTS OF LOCAL OFFICIALS.
- INSTALL GFCI OUTLETS AS REQUIRED BY APPLICABLE CODES. INSTALL GROUND FAULT RECEPTACLES AT RECEPTACLE LOCATIONS WITHIN 5' OF SINKS OR LAVATORIES AND AT EXTERIOR LOCATIONS. EXTERIOR RECEPTACLES SHALL ALSO BE WEATHERPROOF.
- INSTALL HANDWIRED SMOKE DETECTORS WITH BATTERY BACKUP AS REQUIRED. INTERMEDIATE DETECTORS SO THAT ALL WALL SOUND SHOULD ONE DETECTOR ACTIVATE.
- SOME EQUIPMENT SHOWN ON OTHER PLANS MAY REQUIRE ELECTRICAL SERVICE SUCH AS WATER HEATER, CONDENSING UNITS, AIR-HANDLING UNITS, CONDENSATE PUMPS, ETC. ELECTRICAL CONTRACTOR SHALL VERIFY ALL OTHER TRADES CONVENING CONDENSING TRAP REQUIRING ELECTRICAL SERVICE. PROVIDE ONE DRYER OUTLET AND LIGHT IF UNIT IS IN NON-LIT AREA FOR EVERY CONDENSING UNIT AND EVERY AIR-HANDLING UNIT AS REQUIRED BY APPLICABLE CODES.
- OBTAIN NAME PLATE AND RATING OF ALL EQUIPMENT BEFORE INSTALLING. NAME PLATE SHALL BE INSTALLED IN VIEW OF THE CONTRACTOR'S AT EXTERIOR OF BLDG. VOLTS AND AMPACITY AND OTHER DETAILS OF ELECTRICAL CONNECTION. SEE ALL FEEDERS ACCORDING TO NEC REQUIREMENTS.
- RUN ALL CABLE CONCEALED IN WALLS, CEILING OR FLOORS UNLESS NOTED OTHERWISE.
- SUPPORT ALL FIXTURES AND OTHER ITEMS RIGIDLY FROM STRUCTURE.
- INSULATE AND SEAL SOLIDLY BEHIND RECEPTACLES IN EXTERIOR WALLS.
- ALL SWITCHES AND OUTLETS ON FIRST FLOOR TO BE 1'-0" ABOVE BASE FLOOR ELEVATION.
- SHALL BE MORE THAN ONE SWITCH OCCURS IN THE SAME LOCATION, THEY SHALL BE INSTALLED IN A GANG TYPE BOX UNDER ONE COVER PLATE.
- ALL OUTLETS SHALL BE INSTALLED 18" AFF UNLESS NOTED OTHERWISE. SEE ELECTRICAL POWER PLAN FOR INDICATED MOUNTING HEIGHT.
- REFER TO REFLECTED CEILING PLAN FOR RECESSED LIGHT FIXTURE LOCATIONS.

GENERAL UTILITIES

SCALE: N15

ELECTRICAL POWER LEGEND

○	DIPLEX OUTLET	●	220 VOLT DRYER OUTLET
○	COUNTER-HIT DIPLEX	○	120V SMOKE DETECTOR
○	42\"/>		



ELECTRICAL LIGHTING LEGEND

○	FAVULIGHT COMBINATION	○	WALL MOUNTED LIGHT FIXTURE
○	RECESSED LIGHT FIXTURE	○	WALL SWITCH - SINGLE POLE
○	(6\"/>		

REVISIONS

#	DESCRIPTION	DATE

DATE: OCTOBER 8, 2014

CHECKED BY: CKD

DRAWN BY: K