

HVAC SYSTEM REPLACEMENT
 STATE POLICE TROOP L HEADQUARTERS
 2600 N CAUSEWAY BLVD
 MANDEVILLE, LOUISIANA
 PROJECT NO.: 01-107-06B-11, F.01003807
 STATE ID: 500814 SITE CODE: 1-52-004

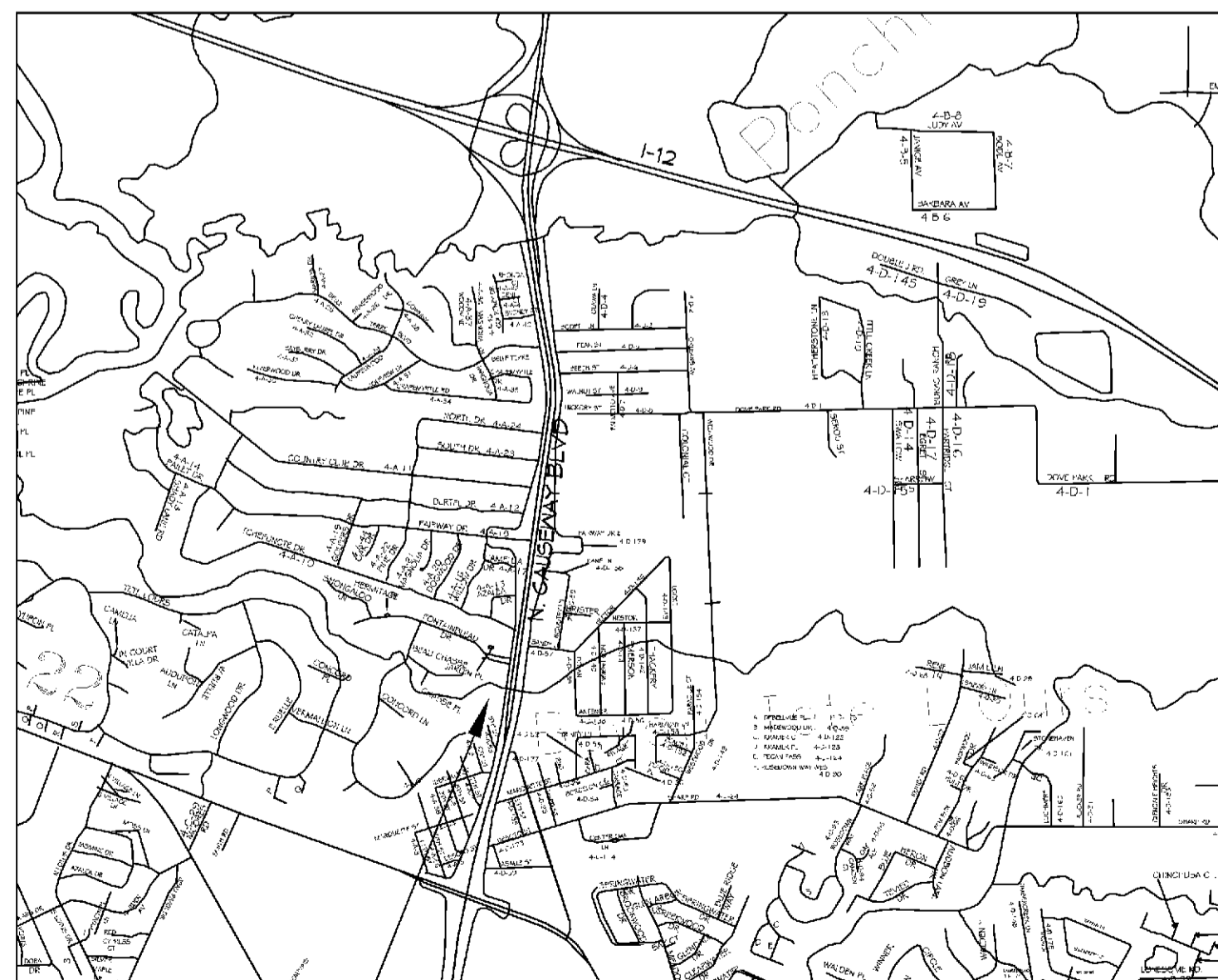


TROOP L

STATE OF LOUISIANA
 JOHN BEL EDWARDS
 GOVERNOR

DIVISION OF ADMINISTRATION
 JAY DARDENNE
 COMMISSIONER OF ADMINISTRATION

OFFICE OF FACILITY PLANNING AND CONTROL
 MARK MOSES
 DIRECTOR



AREA OF WORK
 VICINITY MAP
 N.T.S.

INDEX OF DRAWINGS			
SHT#	DWG#	DRAWING NAME	REVISED
1	CS	COVERSHEET	
2	D101	MECHANICAL DEMO PLAN	
3	M101	MECHANICAL ZONES PLAN	
4	M102	MECHANICAL PLAN	
5	M102A	MECHANICAL PLAN WEST	
6	M102B	MECHANICAL PLAN EAST	
7	M102C	MECHANICAL DETAILS	
8	M103	HVAC DETAILS	
9	M104	HVAC CONTROL SCHEMATIC	
10	E101	ELECTRICAL PLAN	

DAMMON
 ENGINEERING, INC.
 LOUISIANA & MISSISSIPPI
 www.dammonengineering.com
 info@dammoneng.com
 PH: 855.649.5823

#	DESCRIPTION	DATE



HVAC SYSTEM REPLACEMENT
 PROJECT NO.: 01-107-06B-11, F.01003807
 STATE POLICE TROOP L
 HEADQUARTERS
 2600 N CAUSEWAY BLVD, MANDEVILLE, LA 70411
 STATE ID: 500814 SITE CODE: 1-52-004
 JOB No: 2312 DATE: 10/1/2020
 DRAWN BY: BKM CHECKED BY: DFP

SHEET TITLE:
 COVER SHEET

DRAWING NUMBER:
CS

SHEET No: 1 of 10

VAV BOX SCHEDULE

TAG	MAKE/MODEL	SIZE	MINIMUM FLOW CFM	DESIGN FLOW CFM	CONTROL	REMARKS
VAV-1	Johnson Control TSS	10	600	1400	STAND ALONE CONTROL WITH PROGRAMMABLE ROOM SENSOR AND HEAT/COOL SWITCHOVER	1, 2
VAV-2	Johnson Control TSS	8	300	800	STAND ALONE CONTROL WITH PROGRAMMABLE ROOM SENSOR AND HEAT/COOL SWITCHOVER	1, 2
VAV-3	Johnson Control TSS	12	800	1850	STAND ALONE CONTROL WITH PROGRAMMABLE ROOM SENSOR AND HEAT/COOL SWITCHOVER	1, 2
VAV-4	Johnson Control TSS	10	600	1470	STAND ALONE CONTROL WITH PROGRAMMABLE ROOM SENSOR AND HEAT/COOL SWITCHOVER	1, 2
VAV-5	Johnson Control TSS	10	600	1380	STAND ALONE CONTROL WITH PROGRAMMABLE ROOM SENSOR AND HEAT/COOL SWITCHOVER	1, 2
VAV-6	Johnson Control TSS	14	1100	2730	STAND ALONE CONTROL WITH PROGRAMMABLE ROOM SENSOR AND HEAT/COOL SWITCHOVER	1, 2
VAV-7	Johnson Control TSS	8	300	880	STAND ALONE CONTROL WITH PROGRAMMABLE ROOM SENSOR AND HEAT/COOL SWITCHOVER	1, 2
VAV-8	Johnson Control TSS	6	200	500	STAND ALONE CONTROL WITH PROGRAMMABLE ROOM SENSOR AND HEAT/COOL SWITCHOVER	1, 2

- FURNISH WITH AIR FLOW SENSOR AND 120/24 V-UL APPROVED TRANSFORMER.
- NAMING A CERTAIN BRAND, MAKE OR MANUFACTURER IS TO DESIGNATE THE GENERAL STYLE, TYPE, CHARACTER AND QUALITY STANDARD OF THE PRODUCT DESIRED. SEE SPECIFICATIONS FOR ADDITIONAL APPROVED DEVICES. SUBSTITUTION REQUESTS SHALL BE SUBMITTED PRIOR TO BIDDING.

GENERAL HVAC DETAIL NOTES

- ALL MECHANICAL WORK SHALL BE COORDINATED WITH THE WORK OF OTHER TRADES.
- VERIFY ROUTING OF ALL WORK ON SITE.
- HVAC CONTRACTOR REPLACE ALL EQUIPMENT FILTERS AT THE TIME OF POSSESSION OF THE PROJECT BY THE OWNER, USING ONLY NEW FILTERS OF THE PROPER SIZE AND TYPE.
- CONTRACTOR SHALL LEAVE THE HVAC SYSTEM IN PROPER WORKING ORDER AND SHALL GUARANTEE SAME FOR A PERIOD OF TWELVE (12) MONTHS FROM THE DATE OF SUBSTANTIAL COMPLETION.
- WHERE MOUNTING HEIGHTS ARE NOT INDICATED OR DIMENSIONED, INSTALL MECHANICAL SERVICES AND OVERHEAD EQUIPMENT TO PROVIDE THE MAXIMUM HEADROOM POSSIBLE.

CONTRACTOR NOTE:

SCOPE OF WORK (SOW) INCLUDES BUT IS NOT LIMITED TO THE INSTALLATION OF A VARIABLE AIR VOLUME (VAV) SYSTEM AS SHOWN ON THESE PLANS. THIS INCLUDES THE REQUIREMENT AND INSTALLATION OF AN AIR HANDLING UNIT, VAV BOXES, DIFFUSERS, DUCTWORK, PIPING, CONTROLS AND APPURTANCES AS REQUIRED FOR A COMPLETE AND FUNCTIONAL SYSTEM IN ACCORDANCE WITH CURRENT CODES AND STANDARDS. REFERENCE SPECIFICATIONS FOR ADDITIONAL REQUIREMENTS.

DAMMON ENGINEERING, INC.
LOUISIANA & MISSISSIPPI

Chief Engineer: Brian Mistich, PE
554 Old Spanish Trail
Slidell, LA 70458
www.dammonengineering.com
info@dammonengineering.com
PH: 985-649-5832

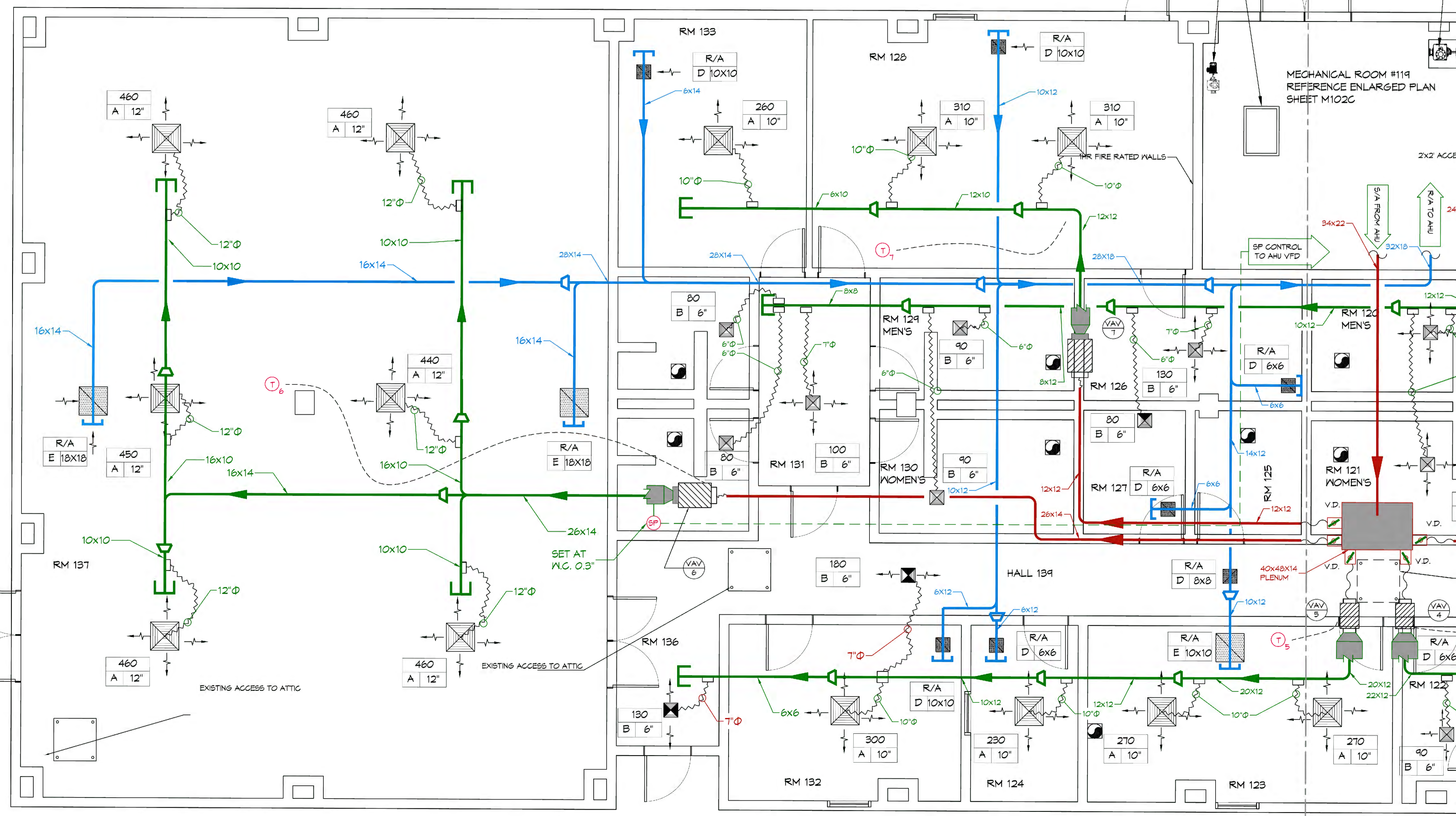
DATE	REVISIONS	# DESCRIPTION



HVAC SYSTEM REPLACEMENT
PROJECT NO: 01-107-06B-11, F.01008907
STATE POLICE TROOP L
HEADQUARTERS

2600 N CAUSEWAY BLVD, MANDEVILLE, LA 70411
STATE ID: 5002814 SITE CODE: 1-53-004
JOB No: 2512 DATE: 10/1/2020
DRAWN BY: [Signature] CHECKED BY: [Signature]

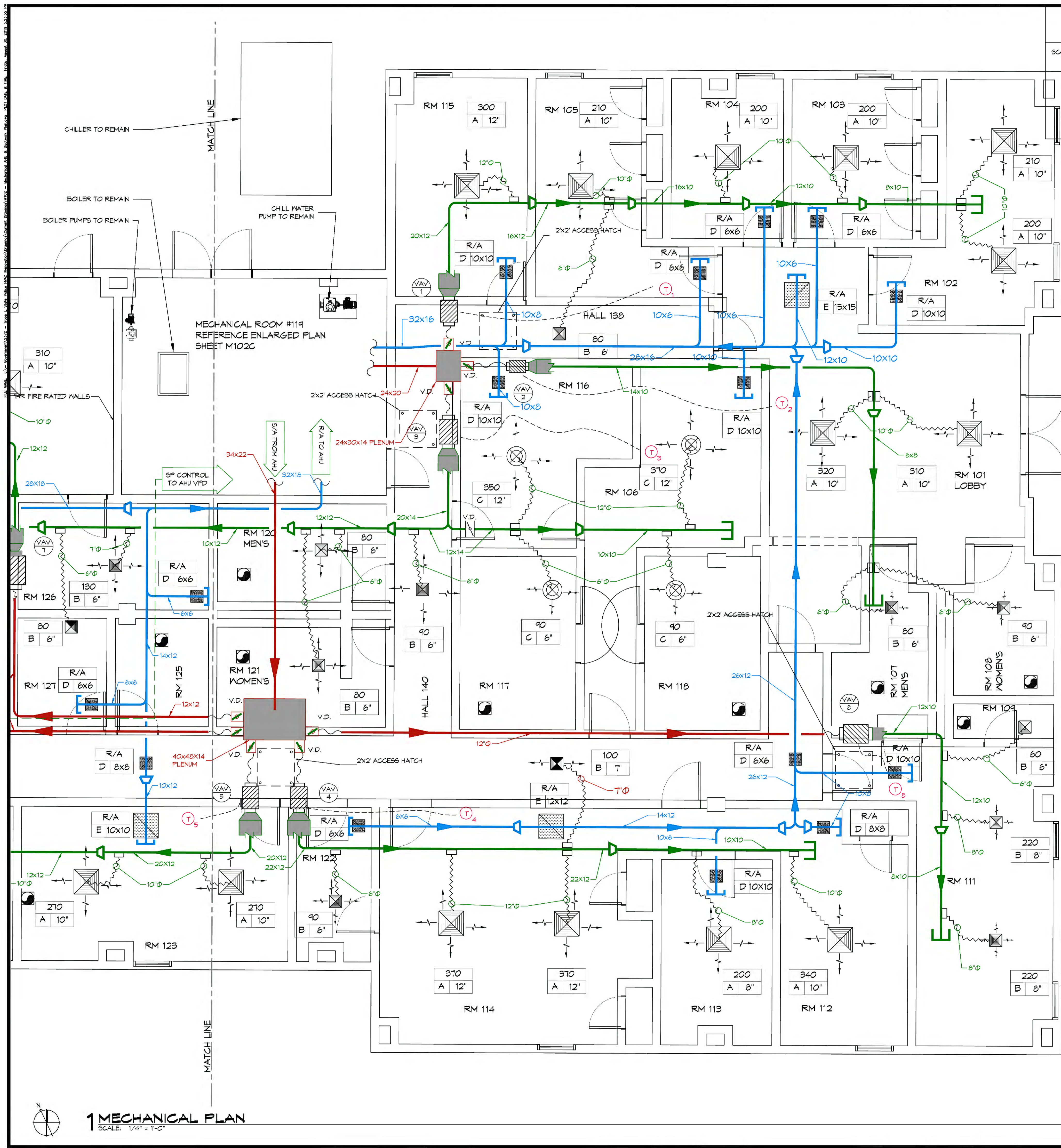
SHEET TITLE: MECHANICAL PLAN WEST
DRAWING NUMBER: **M102A**
SHEET No: 5 of 10



LEGEND

- EXHAUST GRILLE AND ALL ASSOCIATED DUCT WORK TO REMAIN
- VAV/ZONE NUMBER TAG
- NEW VAV BOX
- RETURN AIR DIFFUSER (SIZED BELOW)
- SUPPLY AIR DIFFUSER (SIZED BELOW)
- TWO (2) WAY SUPPLY AIR GRILLE (SIZED BELOW)
- AIR FLOW DIRECTION
- SUPPLY AIR DUCT BEFORE VAV
- SUPPLY AIR DUCT AFTER VAV
- VAV VARIABLE DAMPER
- RETURN AIR DUCT
- FLEX DUCT
- ELECTRICAL WIRING
- THERMOSTAT, REF SPECIFICATIONS
- CAPPED OFF DUCT
- 1 = CFM FLOW RATE OR RETURN AIR
- A = REGISTER/GRILLE SIZE SEE BELOW
- 2 = ROUND DUCT SIZE FOR SUPPLY OR RETURN DUCT SIZE IN INCHES
- A = 24X24 SUPPLY DIFFUSER
- B = 12X12 SUPPLY DIFFUSER
- C = ROUND SUPPLY DIFFUSER
- D = NOT USED
- E = 24X24 RETURN GRILLE
- F = 12X12 RETURN GRILLE
- DUCT SMOKE DETECTOR, REF SPECIFICATIONS
- DUCT STATIC PRESSURE SENSOR, REF SPECIFICATIONS
- FIRE STAT, REF SPECIFICATIONS
- TEMPERATURE CONTROLLER
- LIMIT OF NEW WORK

1 MECHANICAL PLAN
SCALE: 1/4" = 1'-0"



CONTRACTOR NOTE:

SCOPE OF WORK (SOW) INCLUDES BUT IS NOT LIMITED TO THE INSTALLATION OF A VARIABLE AIR VOLUME (VAV) SYSTEM AS SHOWN ON THESE PLANS. THIS INCLUDES THE PROCUREMENT AND INSTALLATION OF AN AIR HANDLING UNIT, VAV BOXES, DIFFUSERS, DUCTWORK, PIPING, CONTROLS AND APPURTANCES AS REQUIRED FOR A COMPLETE AND FUNCTIONAL SYSTEM IN ACCORDANCE WITH CURRENT CODES AND STANDARDS. REFERENCE SPECIFICATIONS FOR ADDITIONAL REQUIREMENTS.

GENERAL HVAC DETAIL NOTES

1. ALL MECHANICAL WORK SHALL BE COORDINATED WITH THE WORK OF OTHER TRADES.
2. VERIFY ROUTING OF ALL WORK ON SITE.
3. HVAC CONTRACTOR REPLACE ALL EQUIPMENT FILTERS AT THE TIME OF POSSESSION OF THE PROJECT BY THE OWNER, USING ONLY NEW FILTERS OF THE PROPER SIZE AND TYPE.
4. CONTRACTOR SHALL LEAVE THE HVAC SYSTEM IN PROPER WORKING ORDER AND SHALL GUARANTEE SAME FOR A PERIOD OF TWELVE (12) MONTHS FROM THE DATE OF SUBSTANTIAL COMPLETION.
5. WHERE MOUNTING HEIGHTS ARE NOT INDICATED OR DIMENSIONED, INSTALL MECHANICAL SERVICES AND OVERHEAD EQUIPMENT TO PROVIDE THE MAXIMUM HEADROOM POSSIBLE.

LEGEND

- EXHAUST GRILLE AND ALL ASSOCIATED DUCT WORK TO REMAIN
- ⊙ VAV/ZONE NUMBER TAG
- NEW VAV BOX
- RETURN AIR DIFFUSER (SIZED BELOW)
- SUPPLY AIR DIFFUSER (SIZED BELOW)
- TWO (2) WAY SUPPLY AIR GRILLE (SIZED BELOW)
- AIR FLOW DIRECTION
- SUPPLY AIR DUCT BEFORE VAV
- SUPPLY AIR DUCT AFTER VAV
- VAV VARIABLE DAMPER
- RETURN AIR DUCT
- FLEX DUCT
- ELECTRICAL WIRING
- ⊙ THERMOSTAT, REF SPECIFICATIONS
- ⊙ CAPPED OFF DUCT
- 1 = CFM FLOW RATE OR RETURN AIR REGISTER/GRILLE SIZE SEE BELOW
- A = REGISTER/GRILLE SIZE
- 2 = ROUND DUCT SIZE FOR SUPPLY OR RETURN DUCT SIZE IN INCHES
- A = 24x24 SUPPLY DIFFUSER
- B = 12x12 SUPPLY DIFFUSER
- ⊙ C = ROUND SUPPLY DIFFUSER
- D = NOT USED
- E = 24x24 RETURN GRILLE
- F = 12x12 RETURN GRILLE
- ⊙ DUCT SMOKE DETECTOR, REF SPECIFICATIONS
- ⊙ DUCT STATIC PRESSURE SENSOR, REF SPECIFICATIONS
- ⊙ FIRE STAT, REF SPECIFICATIONS
- ⊙ TEMPERATURE CONTROLLER
- ◀ LIMIT OF NEW WORK

VAV BOX SCHEDULE

TAG	MAKE/MODEL	SIZE	MINIMUM FLOW CFM	DESIGN FLOW CFM	CONTROL	REMARKS
VAV-1	Johnson Control TSS	10	600	1400	STAND ALONE CONTROL WITH PROGRAMMABLE ROOM SENSOR AND HEAT/COOL SWITCHOVER	1, 2
VAV-2	Johnson Control TSS	8	300	800	STAND ALONE CONTROL WITH PROGRAMMABLE ROOM SENSOR AND HEAT/COOL SWITCHOVER	1, 2
VAV-3	Johnson Control TSS	12	800	1850	STAND ALONE CONTROL WITH PROGRAMMABLE ROOM SENSOR AND HEAT/COOL SWITCHOVER	1, 2
VAV-4	Johnson Control TSS	10	600	1410	STAND ALONE CONTROL WITH PROGRAMMABLE ROOM SENSOR AND HEAT/COOL SWITCHOVER	1, 2
VAV-5	Johnson Control TSS	10	600	1380	STAND ALONE CONTROL WITH PROGRAMMABLE ROOM SENSOR AND HEAT/COOL SWITCHOVER	1, 2
VAV-6	Johnson Control TSS	14	1100	2730	STAND ALONE CONTROL WITH PROGRAMMABLE ROOM SENSOR AND HEAT/COOL SWITCHOVER	1, 2
VAV-7	Johnson Control TSS	8	300	880	STAND ALONE CONTROL WITH PROGRAMMABLE ROOM SENSOR AND HEAT/COOL SWITCHOVER	1, 2
VAV-8	Johnson Control TSS	6	200	500	STAND ALONE CONTROL WITH PROGRAMMABLE ROOM SENSOR AND HEAT/COOL SWITCHOVER	1, 2

1. FURNISH WITH AIRFLOW SENSOR AND 120/24 V-UL APPROVED TRANSFORMER.
2. NAMING A CERTAIN BRAND, MAKE OR MANUFACTURER IS TO DESIGNATE THE GENERAL STYLE, TYPE, CHARACTER AND QUALITY STANDARD OF THE PRODUCT DESIRED. SEE SPECIFICATIONS FOR ADDITIONAL APPROVED DEVICES. SUBSTITUTION REQUESTS SHALL BE SUBMITTED PRIOR TO BIDDING.

MECHANICAL PLAN

SCALE: 1/4" = 1'-0"

DAMMON ENGINEERING, INC.
 LOUISIANA & MISSISSIPPI
 Chief Engineer: Brian Misch, PE
 354 Old Spanish Trail
 Slidell, LA 70458
 www.dammonengineering.com
 info@dammonengineering.com
 PH: 985.649.3832

DATE	REVISIONS	DESCRIPTION



HVAC SYSTEM REPLACEMENT
 PROJECT NO: 01-107-06B-11, F.01008807
 STATE POLICE TROOP
 HEADQUARTERS
 2600 N. CAUSEWAY BLVD, MANDEVILLE, LA 70441
 STATE ID: 8002814, SITE CODE: 1-52-004
 JOB NO: 2312, DATE: 10/11/2020
 DRAWN BY: [Signature]
 CHECKED BY: [Signature]

SHEET TITLE:
 MECHANICAL PLAN EAST

DRAWING NUMBER:

M102B

