

01-107-06B-11, F.01008307
 2512 DATE: 7/25/2019
 2372
 1/25/2019
 2372
 1/25/2019
 2372

TAG	SERVICE	CONFIGURATION	AIR HANDLING UNIT SCHEDULE										CONTROL	MAKE / MODEL	REMARKS													
			Fan					Motor								HW Heating Coil												
			AIRFLOW (CFM)	EXT. S.P. (\"WC)	WHEEL	MAX. MOTOR H.P.	VAC	PH	HZ	TOTAL MBH	SENSIBLE MBH	ENT. FDW				ENT. FWB	MAX. DP (\"WC)	WATER SIDE ENT. (DEG F)	DP (\"WC)	SENSIBLE MBH	AIR SIDE ENT. (DEG F)	DP (\"WC)	WATER SIDE ENT. (DEG F)	DP (\"WC)	MERV RATING	CFNFIGURATION		
AHU-1	Troop L	Vertical Draw Thru Ublast	11,010	2.0	AF	10	400	3	60	450	326	82.0	67.0	0.8	75	44	10	560	68.8	0.6	36	180	5	8	Angled, Side Access	VFD w/ NEMA 1 Disconnect	York XT-54X84	1, 2, 3, 4, 5, 6, 7, 8

Performance to be rated in accordance with AHR standard 210/290 for ASHRAE standard design weather conditions in New Orleans, LA.
 Unit to be of double wall insulated construction with base rail and internal vibration isolation.
 Provide spare set of filters for installation after commissioning and final acceptance.
 Install unit in accordance with manufacturer's recommendations.
 Furnish with duct mounted smoke detector for fan shut down.
 Furnish with matching duct mounted SP sensor.
 Reference specifications for additional requirements.
 Naming a certain brand, make or manufacturer is to designate the general style, type, character and quality standard of the product desired. See Specifications for additional approved Manufacturers and models. Substitution requests shall be submitted prior to bid.

CONTRACTOR NOTE:

SCOPE OF WORK (SOW) INCLUDES BUT IS NOT LIMITED TO THE INSTALLATION OF A VARIABLE AIR VOLUME (VAV) SYSTEM AS SHOWN ON THESE PLANS. THIS INCLUDES THE PROCUREMENT AND INSTALLATION OF AN AIR HANDLING UNIT, VAV BOXES, DIFFUSERS, DUCTWORK, PIPING, CONTROLS AND APPURTANCES AS REQUIRED FOR A COMPLETE AND FUNCTIONAL SYSTEM IN ACCORDANCE WITH CURRENT CODES AND STANDARDS. REFERENCE SPECIFICATIONS FOR ADDITIONAL REQUIREMENTS.

GENERAL HVAC DETAIL NOTES

- ALL MECHANICAL WORK SHALL BE COORDINATED WITH THE WORK OF OTHER TRADES.
- VERIFY ROUTING OF ALL WORK ON SITE.
- HVAC CONTRACTOR REPLACE ALL EQUIPMENT FILTERS AT THE TIME OF POSSESSION OF THE PROJECT BY THE OWNER, USING ONLY NEW FILTERS OF THE PROPER SIZE AND TYPE.
- CONTRACTOR SHALL LEAVE THE HVAC SYSTEM IN PROPER WORKING ORDER AND SHALL GUARANTEE SAME FOR A PERIOD OF TWELVE (12) MONTHS FROM THE DATE OF SUBSTANTIAL COMPLETION.
- WHERE MOUNTING HEIGHTS ARE NOT INDICATED OR DIMENSIONED, INSTALL MECHANICAL SERVICES AND OVERHEAD EQUIPMENT TO PROVIDE THE MAXIMUM HEADROOM POSSIBLE.
- FIELD VERIFY DIMENSIONS AND INTERFERENCES PRIOR TO FABRICATION AND INSTALLATION.
- INSTALL FIRE DAMPERS PER SMACNA AND NFPA STANDARDS.
- INSULATE PIPING AND DUCTS PER SPECIFICATIONS. INSULATION SHALL BE APPLIED AFTER LEAK TESTING AND AFTER REVIEW AND APPROVAL BY DAMMON ENGINEERING.
- REFERENCING SPECIFICATIONS FOR ADDITIONAL REQUIREMENTS.

VAV BOX SCHEDULE

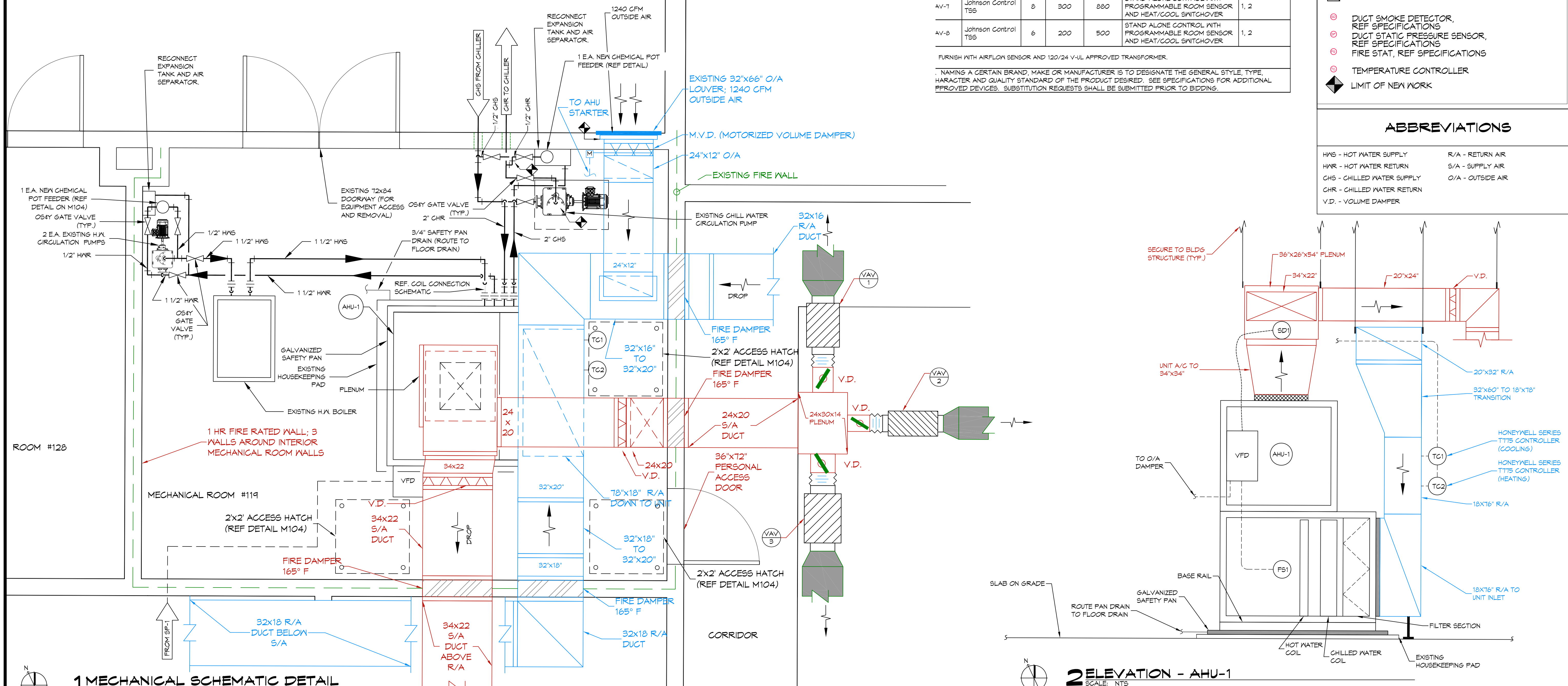
A #	MAKE/MODEL	SIZE	MINIMUM FLOW CFM	DESIGN FLOW CFM	CONTROL	REMARKS
AV-1	Johnson Control TSS	10	600	1400	STAND ALONE CONTROL WITH PROGRAMMABLE ROOM SENSOR AND HEAT/COOL SWITCHOVER	1, 2
AV-2	Johnson Control TSS	8	300	800	STAND ALONE CONTROL WITH PROGRAMMABLE ROOM SENSOR AND HEAT/COOL SWITCHOVER	1, 2
AV-3	Johnson Control TSS	12	800	1850	STAND ALONE CONTROL WITH PROGRAMMABLE ROOM SENSOR AND HEAT/COOL SWITCHOVER	1, 2
AV-4	Johnson Control TSS	10	600	1410	STAND ALONE CONTROL WITH PROGRAMMABLE ROOM SENSOR AND HEAT/COOL SWITCHOVER	1, 2
AV-5	Johnson Control TSS	10	600	1380	STAND ALONE CONTROL WITH PROGRAMMABLE ROOM SENSOR AND HEAT/COOL SWITCHOVER	1, 2
AV-6	Johnson Control TSS	14	1100	2130	STAND ALONE CONTROL WITH PROGRAMMABLE ROOM SENSOR AND HEAT/COOL SWITCHOVER	1, 2
AV-7	Johnson Control TSS	8	300	880	STAND ALONE CONTROL WITH PROGRAMMABLE ROOM SENSOR AND HEAT/COOL SWITCHOVER	1, 2
AV-8	Johnson Control TSS	6	200	500	STAND ALONE CONTROL WITH PROGRAMMABLE ROOM SENSOR AND HEAT/COOL SWITCHOVER	1, 2

FURNISH WITH AIRFLOW SENSOR AND 120V/24 V-UL APPROVED TRANSFORMER.

NAMING A CERTAIN BRAND, MAKE OR MANUFACTURER IS TO DESIGNATE THE GENERAL STYLE, TYPE, CHARACTER AND QUALITY STANDARD OF THE PRODUCT DESIRED. SEE SPECIFICATIONS FOR ADDITIONAL APPROVED DEVICES. SUBSTITUTION REQUESTS SHALL BE SUBMITTED PRIOR TO BIDDING.

- LEGEND**
- EXHAUST GRILLE AND ALL ASSOCIATED DUCT WORK TO REMAIN
 - VAV / ZONE NUMBER TAG
 - NEW VAV BOX
 - RETURN AIR DIFFUSER (SIZED BELOW)
 - SUPPLY AIR DIFFUSER (SIZED BELOW)
 - TWO (2) WAY SUPPLY AIR GRILLE (SIZED BELOW)
 - AIR FLOW DIRECTION
 - SUPPLY AIR DUCT BEFORE VAV
 - SUPPLY AIR DUCT AFTER VAV
 - VAV VARIABLE DAMPER
 - RETURN AIR DUCT
 - FLEX DUCT
 - ELECTRICAL WIRING
 - THERMOSTAT, REF SPECIFICATIONS
 - CAPPED OFF DUCT
 - 1 = CFM FLOW RATE OR RETURN AIR REGISTER/GRILLE SIZE SEE BELOW
 - 2 = ROUND DUCT SIZE FOR SUPPLY OR RETURN DUCT SIZE IN INCHES
 - A = 24X24 SUPPLY DIFFUSER
 - B = 12X12 SUPPLY DIFFUSER
 - C = ROUND SUPPLY DIFFUSER
 - D = NOT USED
 - E = 24X24 RETURN GRILLE
 - F = 12X12 RETURN GRILLE
 - DUCT SMOKE DETECTOR, REF SPECIFICATIONS
 - DUCT STATIC PRESSURE SENSOR, REF SPECIFICATIONS
 - FIRE STAT, REF SPECIFICATIONS
 - TEMPERATURE CONTROLLER
 - LIMIT OF NEW WORK

- ABBREVIATIONS**
- HWS - HOT WATER SUPPLY
 - HWR - HOT WATER RETURN
 - CHS - CHILLED WATER SUPPLY
 - CHR - CHILLED WATER RETURN
 - R/A - RETURN AIR
 - S/A - SUPPLY AIR
 - O/A - OUTSIDE AIR
 - V.D. - VOLUME DAMPER



DAMMON ENGINEERING, INC.
LOUISIANA & MISSISSIPPI

www.dammonengineering.com
info@dammonengineering.com
Ph: 985.649.5532

Chief Engineer: Brian Mitchell, PE
554 Old Spanish Trail
Slidell, LA 70458

REVISIONS: [Table with columns for #, DESCRIPTION, DATE]

SEAL: [Blank]

HVAC SYSTEM REPLACEMENT
PROJECT NO.: 01-107-06B-11, F.01008307

STATE POLICE TROOP HEADQUARTERS

2800 N CAUSEWAY BLVD, MANDEVILLE, LA 70471
STATE ID: 500214 SITE CODE: 153-004
JOB No: 2372 DATE: 7/25/2019
DRAWN BY: [Blank] CHECKED BY: [Blank]

SHEET TITLE: MECHANICAL DETAILS

DRAWING NUMBER: **M102C**

SHEET No: [Blank] of 10