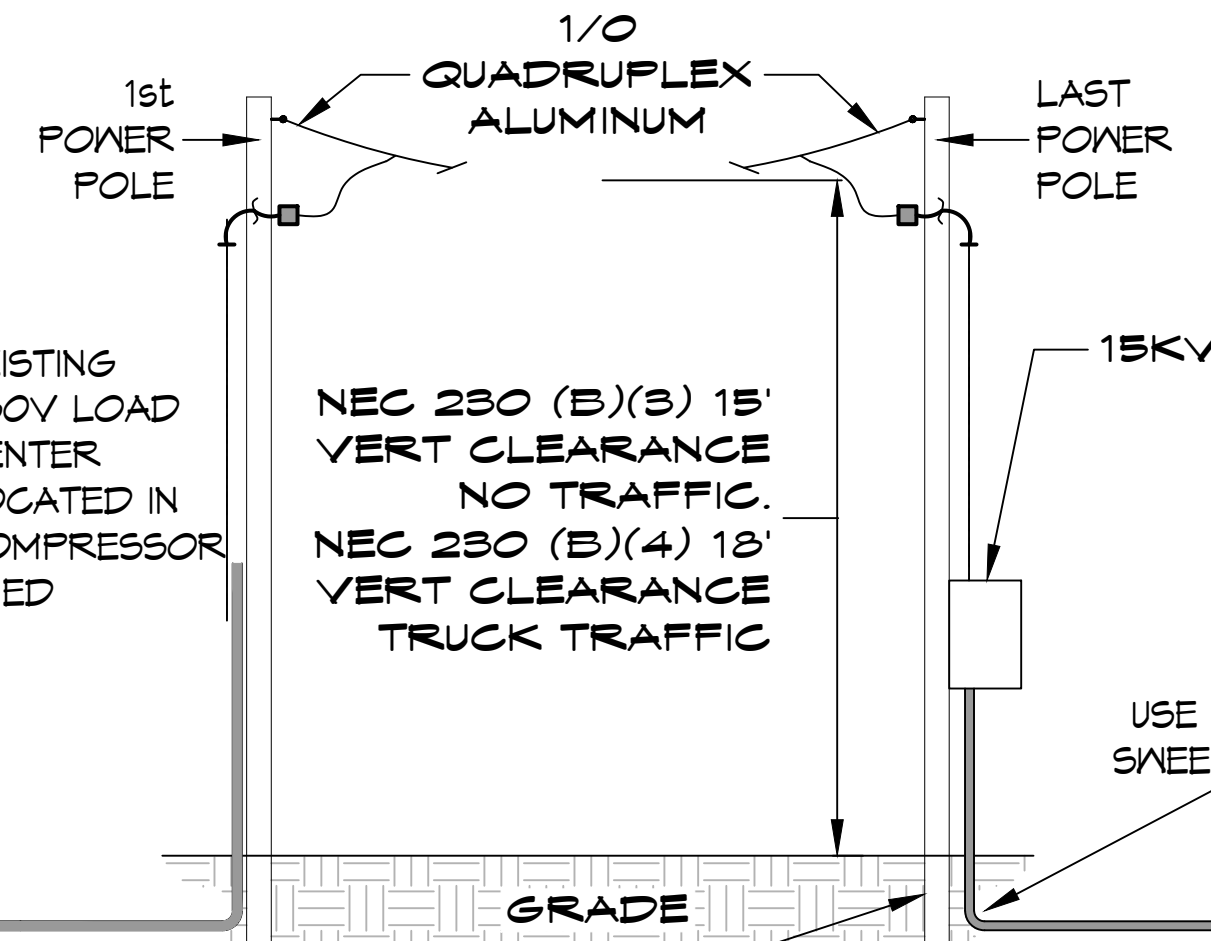


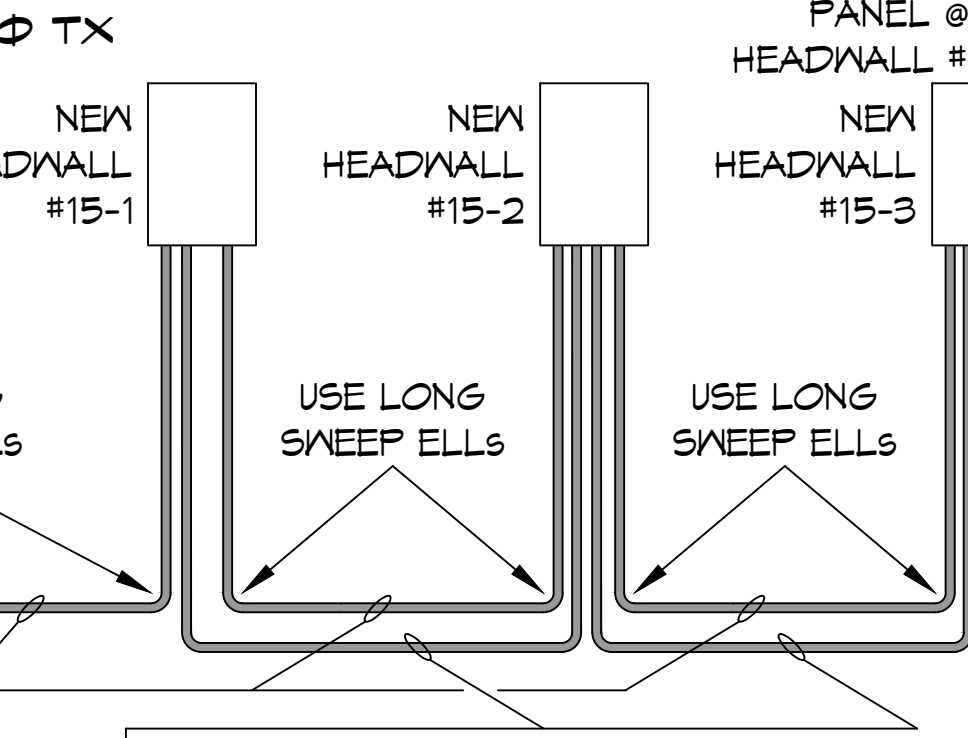
WIRE RUN FOR CELL 15 FROM EXISTING 480V LOAD CENTER; PROVIDE A 20AMP 3 POLE BREAKER MADE FOR ALUMINUM WIRE. PROVIDE AN ADAPTER FOR SMALLER WIRE SIZE TO FIT BREAKER IF NEEDED.

RUN 1-1/2" SCH 80 CONDUIT FROM EXISTING LOAD CENTER TO 1ST POLE. 3-#4 ALUM HOT; 1-#6 ALUM GND. INSTALL AND LEAVE PULL STRING IN ALL CONDUITS.

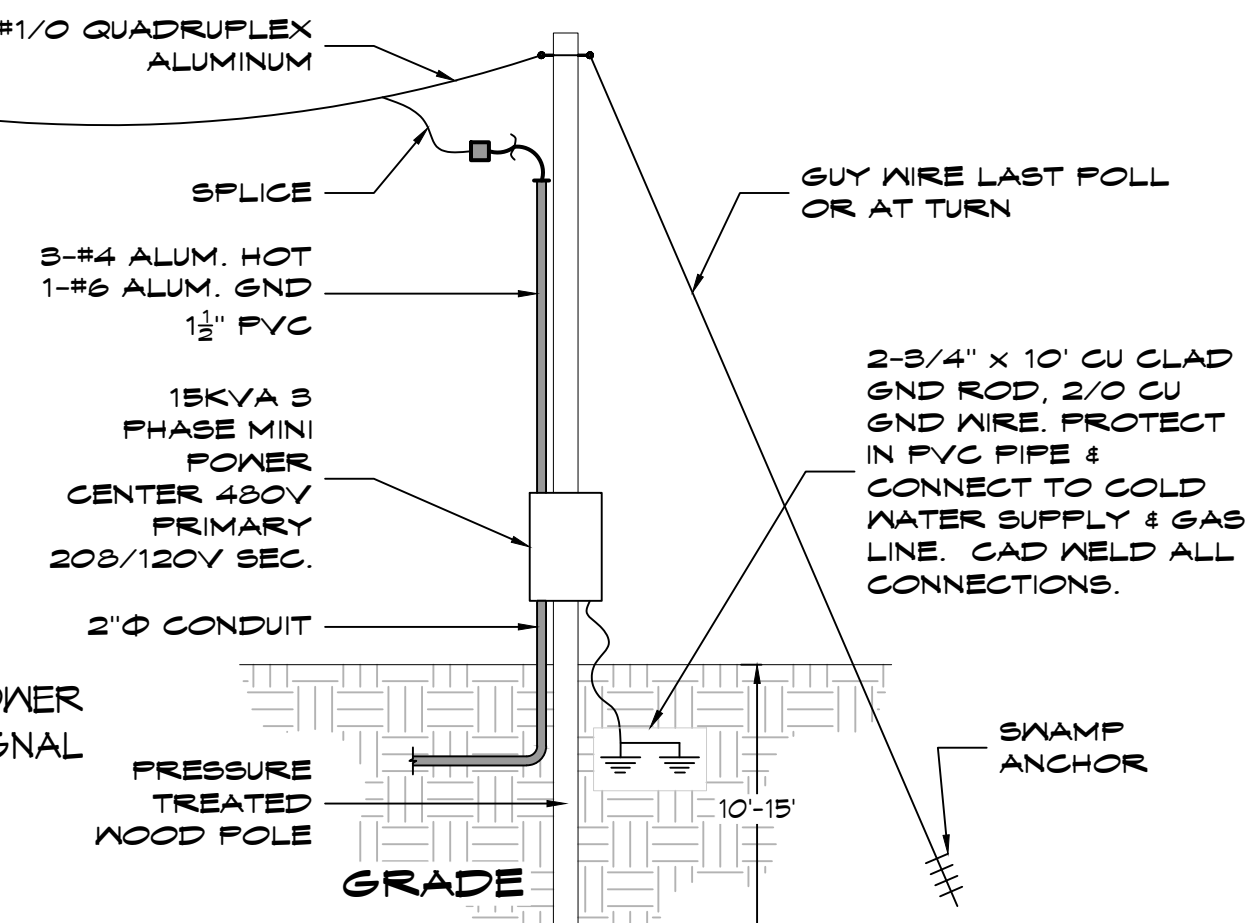
30FT WOOD UTILITY POLE; SPACE ~100FT. BURY 1/3 TO 1/2 OF HEIGHT



ELECTRICIAN SHALL INSTALL & LEAVE PULL STRING IN ALL CONDUITS.



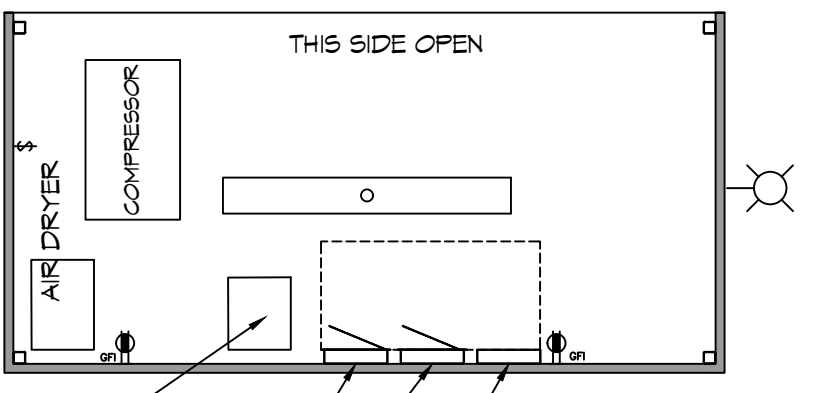
RUN 1-1/2" PARALLEL CONDUIT FROM HEADWALL 15-1 TO HEADWALL 15-3 FOR 12/2 SHIELDED CABLE.



EQUIPMENT LIST	
QUANTITY	ITEM
3	LEACHATE PUMP CONTROL PANEL AND TRANSDUCER, MANUFACTURER COX, MDL CP-5676
1	INTEGRALERT SYSTEM, ESI-844
1	15KV 3Ø MINI POWER CENTER; 480V PRIMARY 208/120V SEC. WITH 12 SPACES FOR CIRCUIT BREAKERS. INSTALL 1EA 20 120V CIRCUIT BREAKER. MANUFACTURER EATON, P48G28T1512. MINI CENTER MAY BE SUBSTITUTED USING INDIVIDUAL COMPONENTS. REQUIRES PRIOR APPROVAL.
9	POLARIS BLACK INSULATED TAP CONNECTOR; 4-14 AWG

NOTE: SEE SHEET M103 FOR LEACHATE PUMP CONTROL PANEL CONNECTIONS.

COX RESEARCH & TECHNOLOGY LEACHATE PUMP CONTROL PANEL AND TRANSDUCER EQUIPMENT LIST, MODEL CP-5676	
QUANTITY	ITEM
1	HOFFMAN NEMA 4X ENCLOSURE, PART # GSD24201055
1	COX RESEARCH BACKPLATE/SWING PANEL, PART # CAMO242010CSD
1	SQUARE D CIRCUIT 40 AMP BREAKER, PART # QOU140
1	SQUARE D CIRCUIT 15 AMP BREAKER, PART # QOU115
1	SQUARE D CIRCUIT 10 AMP BREAKER, PART # QOU110
1	HUBBELL GFI RECEPTACLE
1	TPS SURGE SUPPRESSOR, PART # TK-LT120-15A-DIN2
1	PRECISION DIGITAL SETPOINT CONTROLLER, PART # PD6000-6RT
1	MJK SUBMERSIBLE TRANSDUCER, PART # 3400
1	ABB H.O.A. SWITCH, PART # C355110B-20
1	ABB BLUE PILOT LIGHT, PART # CL513L
1	CONERY ALARM LIGHT, PART # R40-XL5
1	ASCO AIR SOLENOID VALVE, PART # 8210G002
2	IDEC ELECTROMECHANICAL RELAY, PART # RY4SULCAG120
1	HOFFMAN PAD LOCK HANDLE, PART # GPDLOCKHDL
1	MASTER PNEUMATIC FILTER, PART # CF5AR350
2	1/2" x 1/2" BULKHEAD COPPER ADAPTER
2	1/2" COPPER UNION
2	1/2" x 6" COPPER PIPE
2	1/2" 90° COPPER ELBOW
1	1/2" MALE TO MALE FITTING



EXISTING 30kva TRANSFORMER  
 EXISTING NEMA 3R 208/120V 3Ø 125A - LOADCENTER POWER PANEL  
 EXISTING NEMA 3R 277/480V 3Ø 200A - LOADCENTER POWER PANEL  
 EXISTING LIFT STATION CONTROL BOX W/ 4 LEVEL SWITCHES AND SCADA COMMUNICATIONS

COMPRESSOR SHED ELECTRICAL PLAN  
 N.T.S.

NEW INTEGRALERT SYSTEM LOCATED AT HEADWALL 15-3, CONTROL PANEL CONNECTIONS.

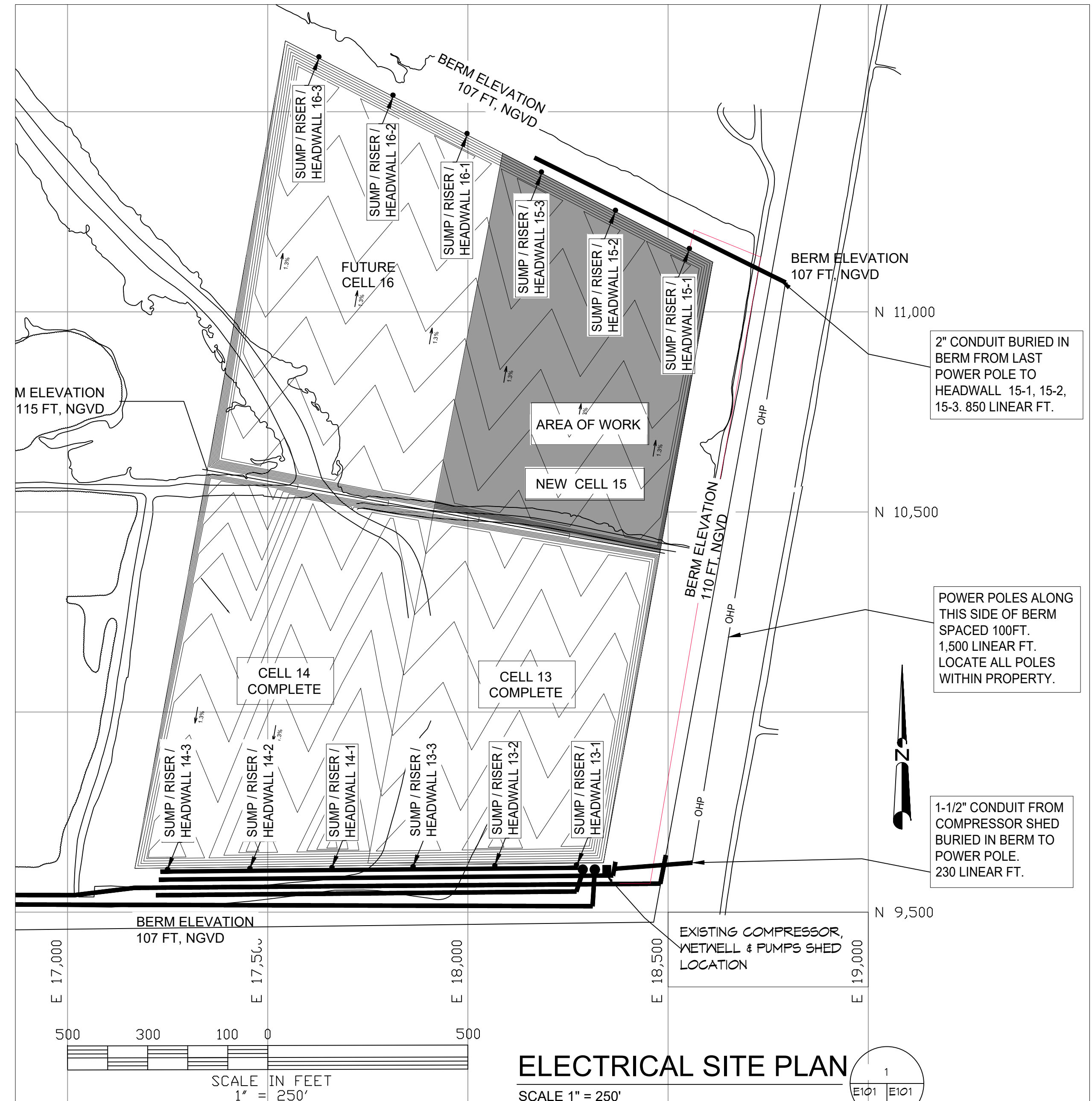
HEADWALL	NI 15-1	NI 15-2	NI 15-3	NI 15-4	NI 15-5	NI 15-6	NT SPARE	NI SPARE
1								

1. ELECTRICIAN SHALL MAKE CONNECTIONS FROM THE NEW CONTROL PANELS ALARM CONTACT TO THE NEW INTEGRALERT SYSTEM LOCATED AT HEADWALL 15-3 USING THE TABLE ABOVE.  
 2. ELECTRICIAN SHALL TEST THE NEW CONTROL PANEL TO ENSURE THAT WHEN A HIGH WATER LEVEL HAS BEEN DETECTED THAT IT:  
 A. TURNS ON THE STROBE LIGHT AT THAT CONTROL PANEL.  
 B. SENDS AN ALERT VIA INTEGRALERT SYSTEM.

PUMP CONTROLLER SETTINGS:

LEACHATE DEPTH	PUMP ON	PUMP OFF	HIGH LEVEL ON	HIGH LEVEL OFF
1.5	0.75	2.0	1.0	

PANEL SCHEDULE									
PANEL NO.	PANEL DESCRIPTION	LOAD DESCRIPTION	BREAKER	LOAD (AMP)	VOLTS	PHASE	WIRE SIZE (C)	WIRE SIZE (N)	WIRE SIZE (G)
3	3Ø COMPRESSOR		3	15	480	3	3	3	3
4	PUMP CONTROLLER		21	21	480	3	21	21	21
15	CELL 15		1	20	480	3	1	1	1



NOTE: NAMING A CERTAIN BRAND, MAKE OR MANUFACTURER IS TO DESIGNATE THE GENERAL STYLE, TYPE, CHARACTER AND QUALITY STANDARD OF THE PRODUCT DESIRED. SUBSTITUTION REQUESTS MUST BE SUBMITTED PRIOR TO BIDDING.

ELECTRICAL NOTES

- ALL WORK SHALL CONFORM TO THE LATEST EDITION OF THE NATIONAL ELECTRICAL CODE, THE GOVERNING ELECTRICAL CODE AND ALL OTHER INSPECTION DEPARTMENTS HAVING JURISDICTION. OBTAIN CERTIFICATES OR APPROVAL WHERE REQUIRED.
- ALL MATERIALS FURNISHED SHALL BE NEW AND SHALL BE U.L. LISTED.
- THE DRAWINGS INDICATE SIZE AND GENERAL LOCATION OF WORK. SCALE DIMENSIONS SHALL NOT BE USED. THE EXACT LOCATION AND LOCATION OF ALL POWER POLES AND ALL RISERS SHALL BE DETERMINED BY ACTUAL CONDITIONS IN THE FIELD.
- PRIOR TO BIDDING, CONTRACTOR SHALL VISIT THE JOB SITE AND FAMILIARIZE THEMSELVES WITH THE EXISTING CONDITIONS.
- ELECTRICAL CONTRACTOR SHALL COORDINATE HIS WORK WITH OTHER TRADES AND WITH OTHER CONTRACTORS WHOSE WORK MAY AFFECT THIS INSTALLATION.
- PERFORM TEST REQUIRED BY THE OWNER OR THE ENGINEER IN CONNECTION WITH THE OPERATION OF THE ELECTRICAL SYSTEM IN THE BUILDING.
- ALL TESTS SHALL BE MADE IN ACCORDANCE WITH THE LATEST STANDARD OF THE IEEE AND THE NATIONAL ELECTRICAL CODE.
- MINIMUM CONDUCTOR SIZE SHALL BE #12, 600V INSULATION.
- CONTRACTOR SHALL INSTALL WIRING AND OTHER CIRCUIT COMPONENTS TO MATCH EQUIPMENT ACTUALLY INSTALLED.
- INSTALL GROUND FAULT RECEPTACLES AT RECEPTACLE LOCATIONS AT EXTERIOR LOCATIONS. EXTERIOR RECEPTACLES SHALL ALSO BE WATERPROOF.
- BONDING AND GROUNDING SHALL BE IN ACCORDANCE WITH NFPA 70:250-63, NFPA 250-23, 250-71 & 250-72.
- GROUND NEUTRAL IN ACCORDANCE WITH NFPA 70:250-23b.
- FUSES SHALL BE ITT CLASS K5, 250 VOLT, 200,000 AMP INTERRUPTING CAP.
- MINIMUM SIZE ELECTRICAL CONDUIT SHALL BE 1" FOR EXTERIOR USE, UNLESS OTHERWISE SHOWN. ALL ELECTRICAL CONDUIT SHALL BE SCHEDULE 40 PIPE BELOW GRADE AND SCHEDULE 30 PIPE ABOVE GRADE.
- 1-1/2" & 2" UNDERGROUND CONDUITS SHALL BE INSTALLED BETWEEN HEADWALLS. EACH 20 AMP CIRCUIT BREAKER AT COMPRESSOR SHED SHALL SUPPORT 1 CELL OR 3 HEADWALLS.
- TERMINATE ALL EQUIPMENT ACCORDING TO MANUFACTURER'S RECOMMENDATION.
- CONTRACTOR SHALL PROVIDE AS-BUILT DRAWINGS FOR ALL WORK PERFORMED.

WORK AREA: ONLY CELL 15 IS BEING CONSTRUCTED UNDER THIS PROJECT.

**DAMMON ENGINEERING, INC.**  
 LOUISIANA & MISSISSIPPI  
 Chief Engineer: Brian A. Misch, PE  
 554 Old Spanish Trail  
 Slidell, LA 70458  
 www.dammonengineering.com  
 info@dammonengineering.com  
 PH: 985.649.5832

#	DESCRIPTION	DATE

STATE OF LOUISIANA  
 BRIAN A. MISCH  
 LICENSE NO. 35127  
 3/17/2022

CELL 15  
 SCHEDULE 40 & SCHEDULE 30 PIPE  
 TANGIPAHOLA REGIONAL SOLID WASTE FACILITY  
 57510 HANO ROAD  
 INDEPENDENCE, LOUISIANA  
 JOB NO: 2495  
 DATE: 2/2/2022  
 DRAWN BY: DPD  
 CHECKED BY: BVM

SHEET TITLE:  
 ELECTRICAL PLAN

DRAWING NUMBER:  
**E101**

SHEET No: 4 of 4