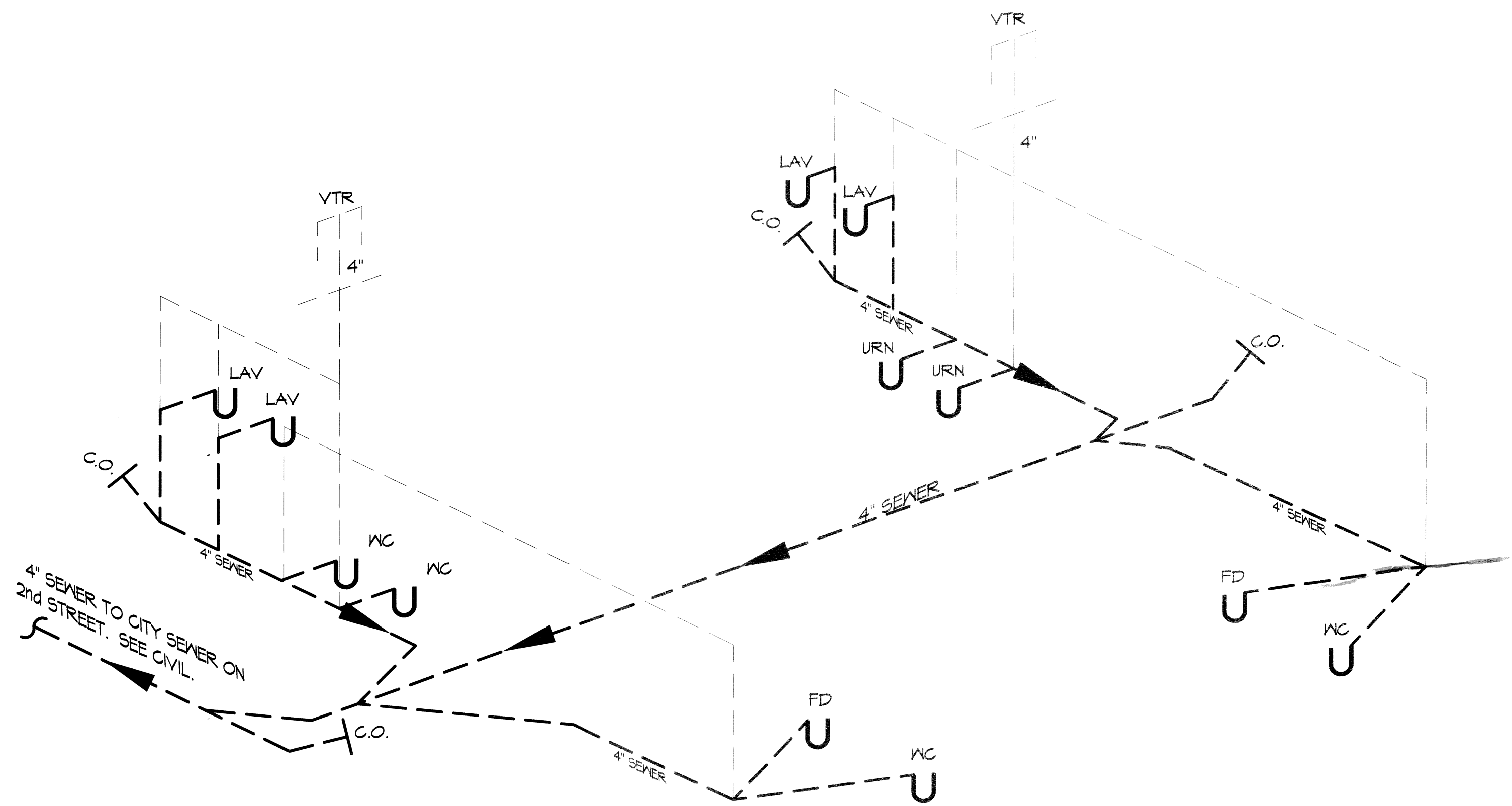
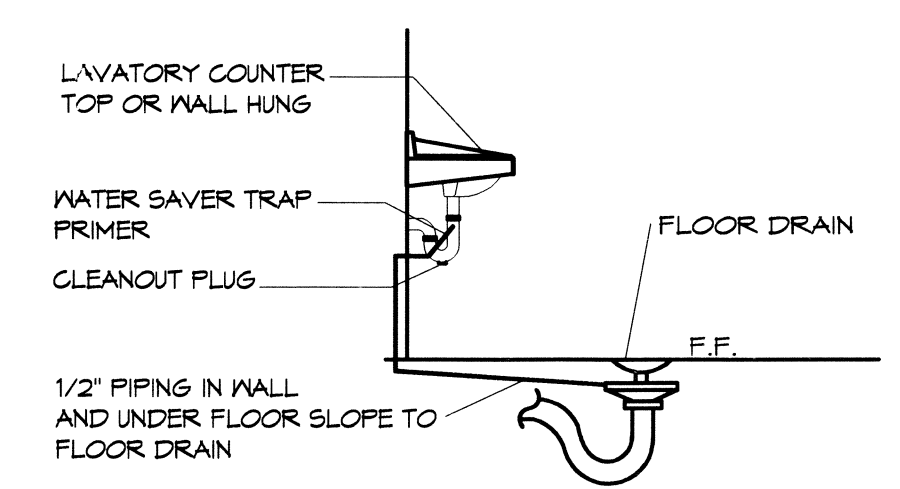


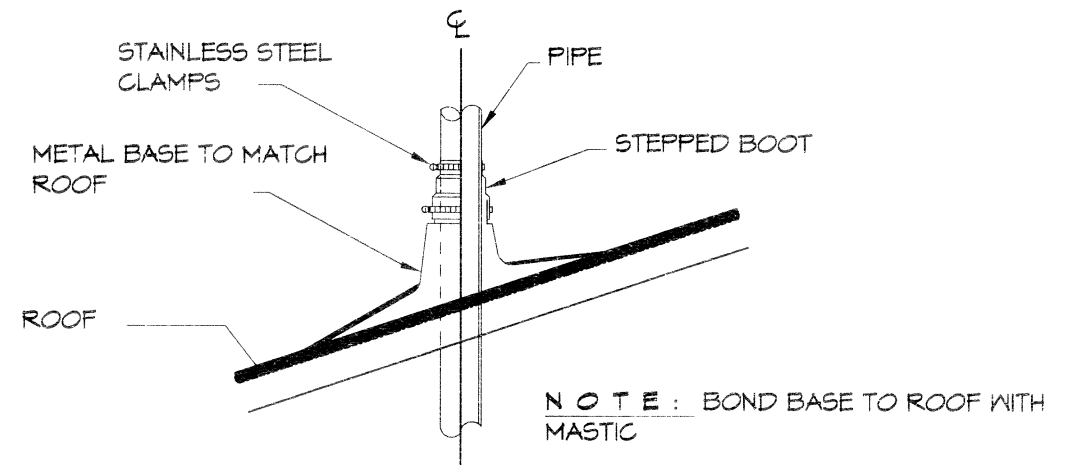
1 PLUMBING PLAN
SCALE: 1/4" = 1'-0"



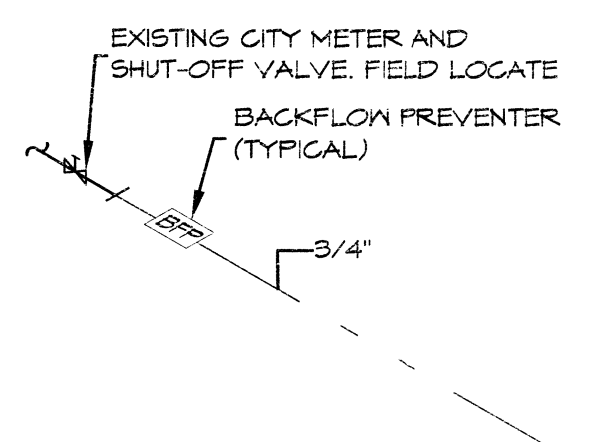
2 PLUMBING RISER DIAGRAM
SCALE: NTS



3 TYPICAL DETAIL
SCALE: NTS FLOOR DRAIN



4 TYPICAL DETAIL
SCALE: NTS VENT THRU ROOF



5 TYPICAL DETAIL
SCALE: NTS WATER METER SERVICE

PLUMBING FIXTURE SCHEDULE							
ITEM	DESCRIPTION	SOIL OR WASTE	VENT	COLD WATER	HOT WATER	DESCRIPTION (AMERICAN STANDARD FIXTURE EXCEPT AS NOTED)	NOTES
WC	WATER CLOSET	4"	4"	1"	—	KOHLER K-4368 WITH ZURN Z-6000XL SUPPLY FITTING AND BENEKE 52766 ELONGATED WHITE SEAT, WITH BOLT CAPS.	1 4 2
URN	URNAL WALL HUNG	1 1/2"	1 1/2"	3/4"	—	KOHLER K-5016-T WITH ZURN Z-6003XL SUPPLY FITTING, PROVIDE Z-1222 URNINAL CARRIER w/ BEARING PLATE.	1 4 2
LAV	LAVATORY	1 1/2"	1 1/2"	1/2"	—	AMERICAN STANDARD AQUALYN DROP-IN SINK, 04T5.04T; WITH BRADLEY AERADA 1200 SERIES	2 4 3
FD	FLOOR DRAIN	3"	2"	—	—	COATED CAST IRON WITH ADJUSTABLE NICKEL BRONZE GRATE, TRAP PRIMER CONNECTION AND DEEP SEAL TRAP, EQUAL TO JAY R. SMITH 2010-B-F.	2
WCO	WALL CLEAN-OUT	—	—	—	—	MADE #N-8453-R6, WITH BRASS PLUG AND ROUND STAINLESS STEEL SECURED ACCESS COVER.	2
EF	CEILING EXHAUST FAN	—	—	—	—	EXHAUST FAN WITH GRILL AND BACKDRAFT DAMPER, GREENHECK SP-A200. TYP UP TO GREENHECK MDL RCC-T CURB CAP W/CURB ON ROOF.	2

1. PROVIDE ADA FIXTURE.
2. PROVIDE LISTED FIXTURE(S) OR EQUAL.
3. INSULATE PIPING FOR HANDICAP FIXTURE.

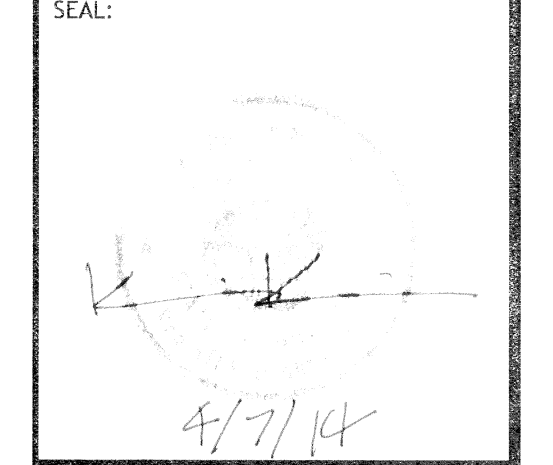
PLUMBING NOTES

1. PROVIDE ALL LABOR, MATERIAL AND EQUIPMENT FOR A COMPLETE OPERATING SYSTEM. THE SYSTEM SHALL INCLUDE HOT AND COLD WATER PIPING, SEWER AND VENT PIPING, INSULATION, WATER HEATER, HANGERS, VALVES, SUPPORTS WITHOUT ANY RESTRICTIONS TO COLUMN, CUT AND PATCH AS REQUIRED TO INSTALL PIPES.
2. ALL WORK AND MATERIAL SHALL CONFORM STRICTLY TO THE LATEST LOCAL, CITY, PARISH, STATE AND NATIONAL GOVERNING CODES.
3. CONTRACTOR IS TO FIELD VERIFY ALL EXISTING UTILITY LOCATIONS, ELEVATIONS AND SIZES PRIOR TO COMMENCING ANY WORK. CONTRACTOR SHALL PAY NECESSARY FEES FOR THE UTILITIES CONNECTIONS.
4. CONTRACTOR IS RESPONSIBLE TO VERIFY THE EXISTING INVERTS AND SET NEW INVERTS OF SEWERAGE AND DRAINAGE PIPES.
5. SEWERAGE LINES 3-INCH AND SMALLER SHALL BE SLOPED 1/4" PER FOOT AND LINE 4-INCH AND LARGER SHALL BE 1/8" PER FOOT.
6. TEST ALL PIPING AT REQUIRED PRESSURE.
7. ALL PLUMBING SHALL BE CLOSELY COORDINATED WITH STRUCTURAL SYSTEM, MECHANICAL SYSTEM AND ELECTRICAL TO INSURE NO TRADES WILL CONFLICT WITH EACH OTHER.
8. DO NOT SCALE DRAWINGS. SEE ARCHITECTURAL DRAWINGS FOR EXACT LOCATIONS OF DOORS, WINDOWS, WALLS, FIXTURES, ETC.
9. ALL WATER MAINS AND PIPING NOT SHOWN FOR CLARITY, ALL LOCATIONS FIELD VERIFIED.
10. DOMESTIC HOT AND COLD WATER PIPING AND FITTINGS UNDER SLAB SHALL BE ASTM B88 COPPER WATER TUBE, TYPE K SOFT ANNEALED. NO JOINTS SHALL BE ALLOWED UNDER THE SLAB.
11. DOMESTIC WATER PIPING AND FITTINGS ABOVE THE SLAB SHALL BE ASTM B88 COPPER WATER TUBE, TYPE L, HARD DRAWN WITH COPPER PRESSURE TYPE FITTINGS, ANSI B16.22. THE JOINTS SHALL BE SOLDERED TYPING USING ASTM B32, ALLOY GRADE #5A (95-5) SOLDER.
12. SOIL, WASTE, VENT PIPING AND FITTINGS ABOVE THE SLAB SHALL BE SERVICE WEIGHT CAST IRON PIPE WITH BELL AND SPIGOT ENDS AND ONE PIECE NEOPRENE INSERT TYPE GASKET. USE PVC SCHEDULE 40 OR ABS DWV PIPES AND FITTINGS WHERE PERMITTED BY CODE.
13. ALL WATER PIPING AND FITTINGS ABOVE THE FLOOR SHALL BE INSULATED WITH 3/4" THICK FIBERGLASS INSULATION AND JACKET.
14. ALL ELECTRICAL, MECHANICAL AND PLUMBING PENETRATING FIRE PARTITIONS SHALL BE FIRE CAULKED. (PENETRATIONS THROUGH RATED CONSTRUCTION SHALL BE SEALED WITH A MATERIAL CAPABLE OF PREVENTING THE PASSAGE OF FLAMES AND HOT GASES WHEN TESTED IN ACCORDANCE WITH ASTM-E814.)
15. ALL PLUMBING LINES SHOWN ARE DIAGRAMATIC.

APPROVED: 11 FEB 2014

DAMMON ENGINEERING, INC.
Architects & Engineers
www.dammonengineering.com
info@dammonengineering.com
PH: 985.649.8832
554 Old Spanish Trail
Slidell, LA 70468
F: 985.641.9950

#	DESCRIPTION	DATE



3RD STREET RESTROOMS / VETERANS PARK IMPROVEMENTS
CITY OF SLIDELL
SLIDELL, LOUISIANA
JOB NO: 210
DATE: 4/2/2014
DRAWN BY: KJK
CHECKED BY: CKD

SHEET TITLE: PLUMBING PLAN
DRAWING NUMBER: 101
SHEET No: 1 of 8