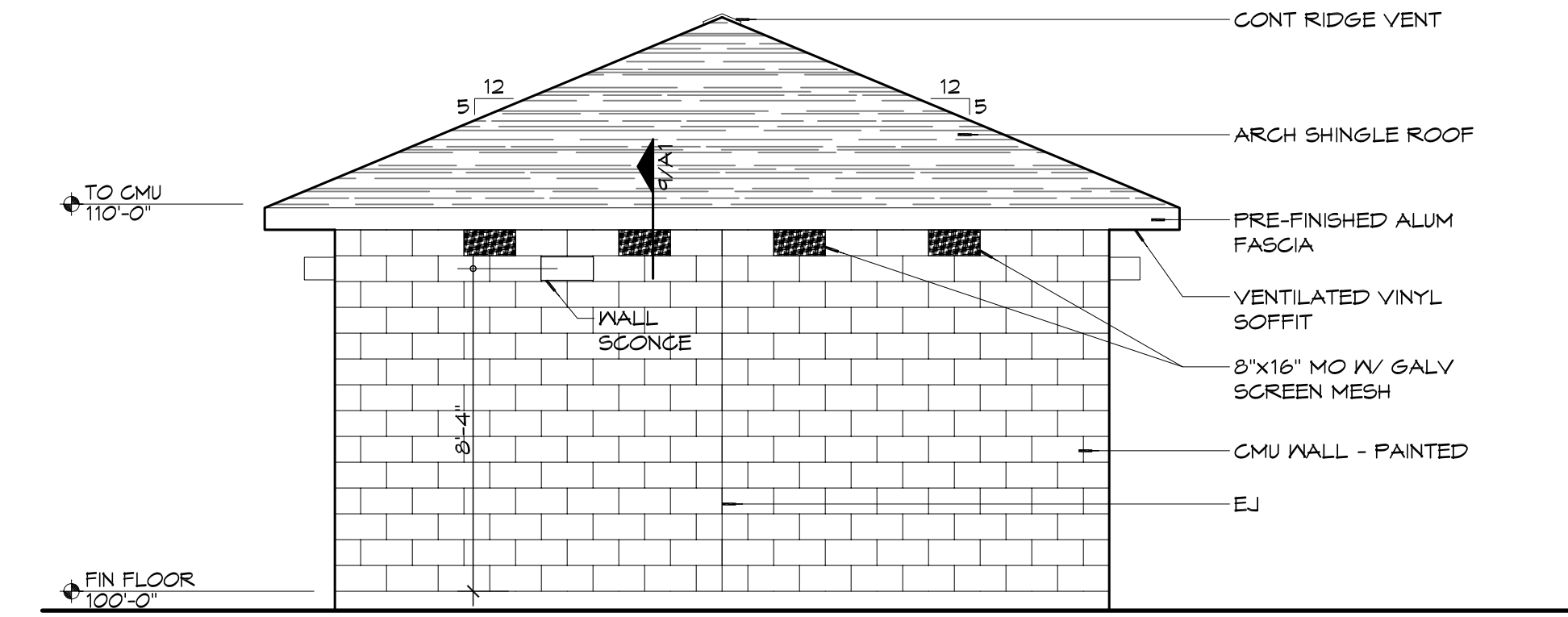
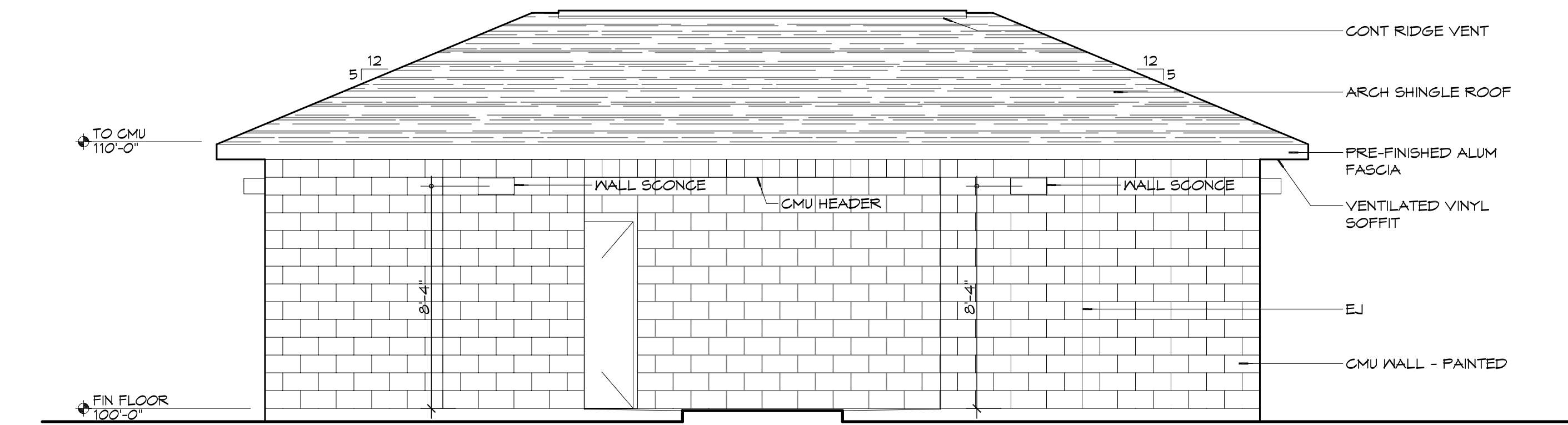


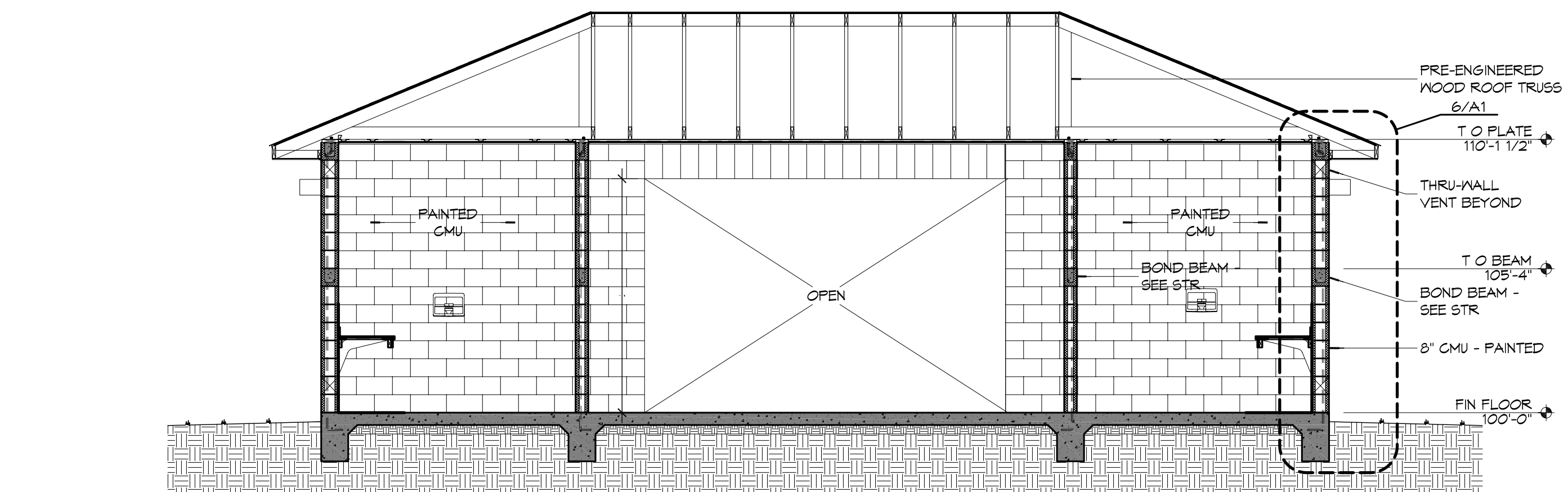
5 EXTERIOR ELEVATION
SCALE: 1/4" = 1'-0"



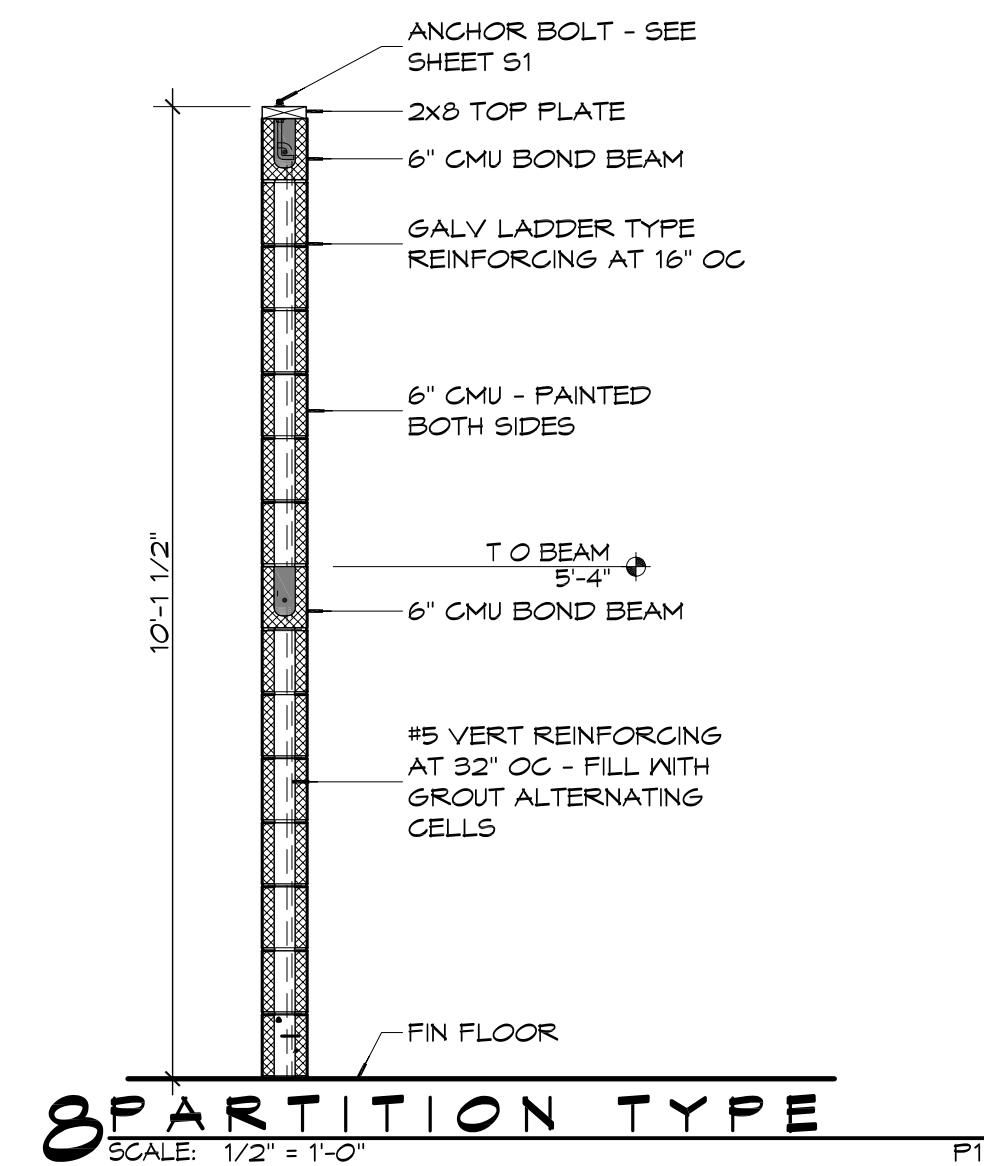
4 EXTERIOR ELEVATION
SCALE: 1/4" = 1'-0"



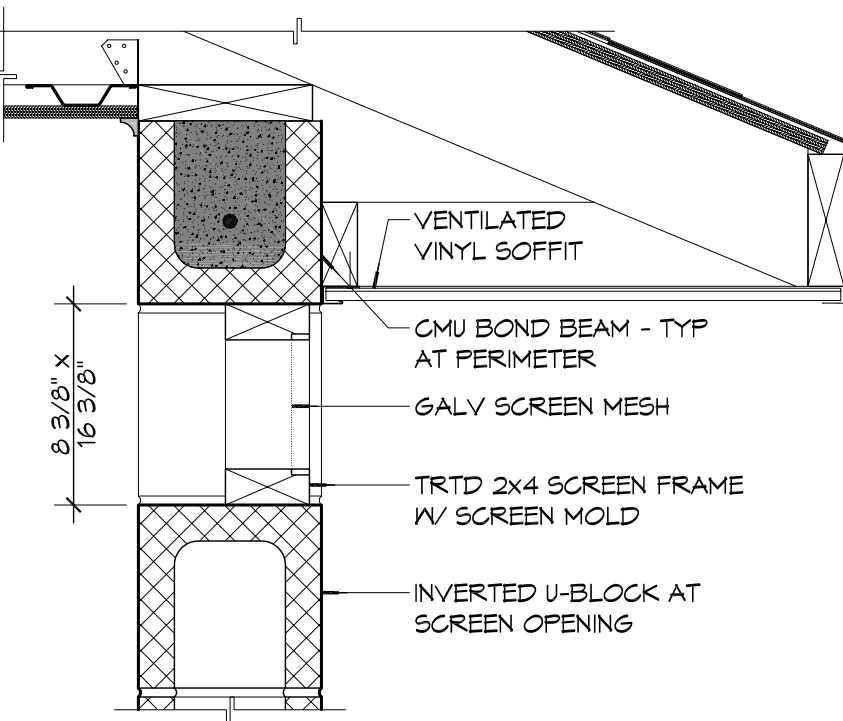
3 EXTERIOR ELEVATION
SCALE: 1/4" = 1'-0"



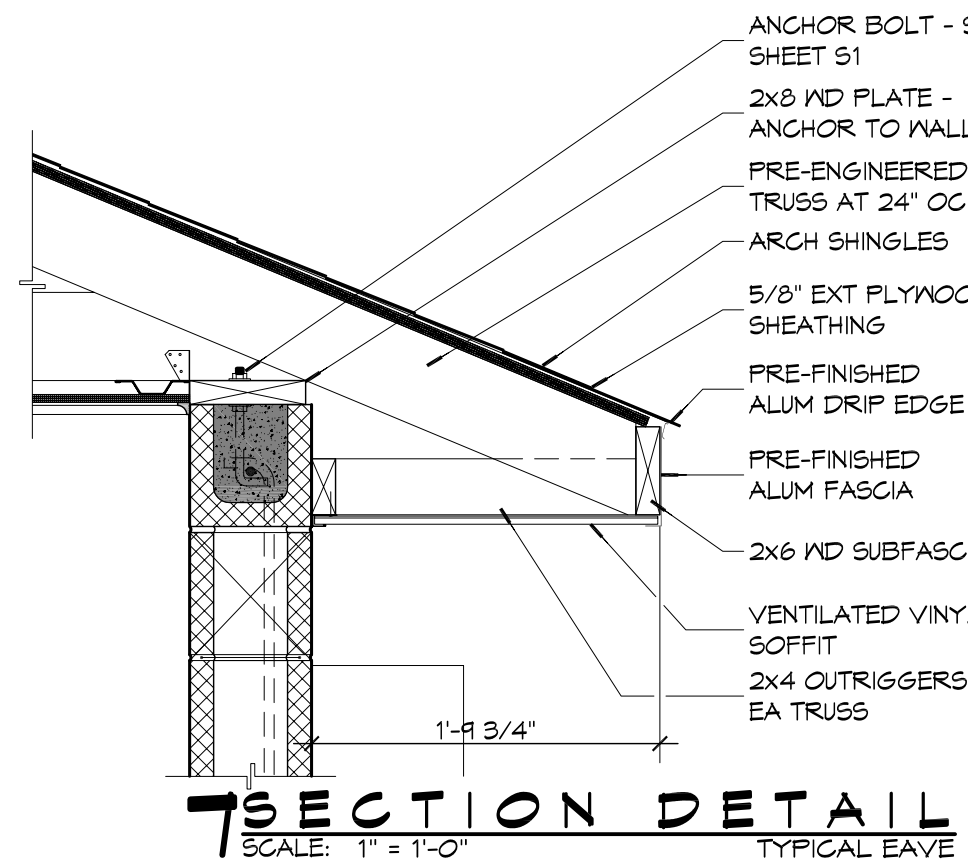
2 BUILDING SECTION
SCALE: 1/4" = 1'-0"



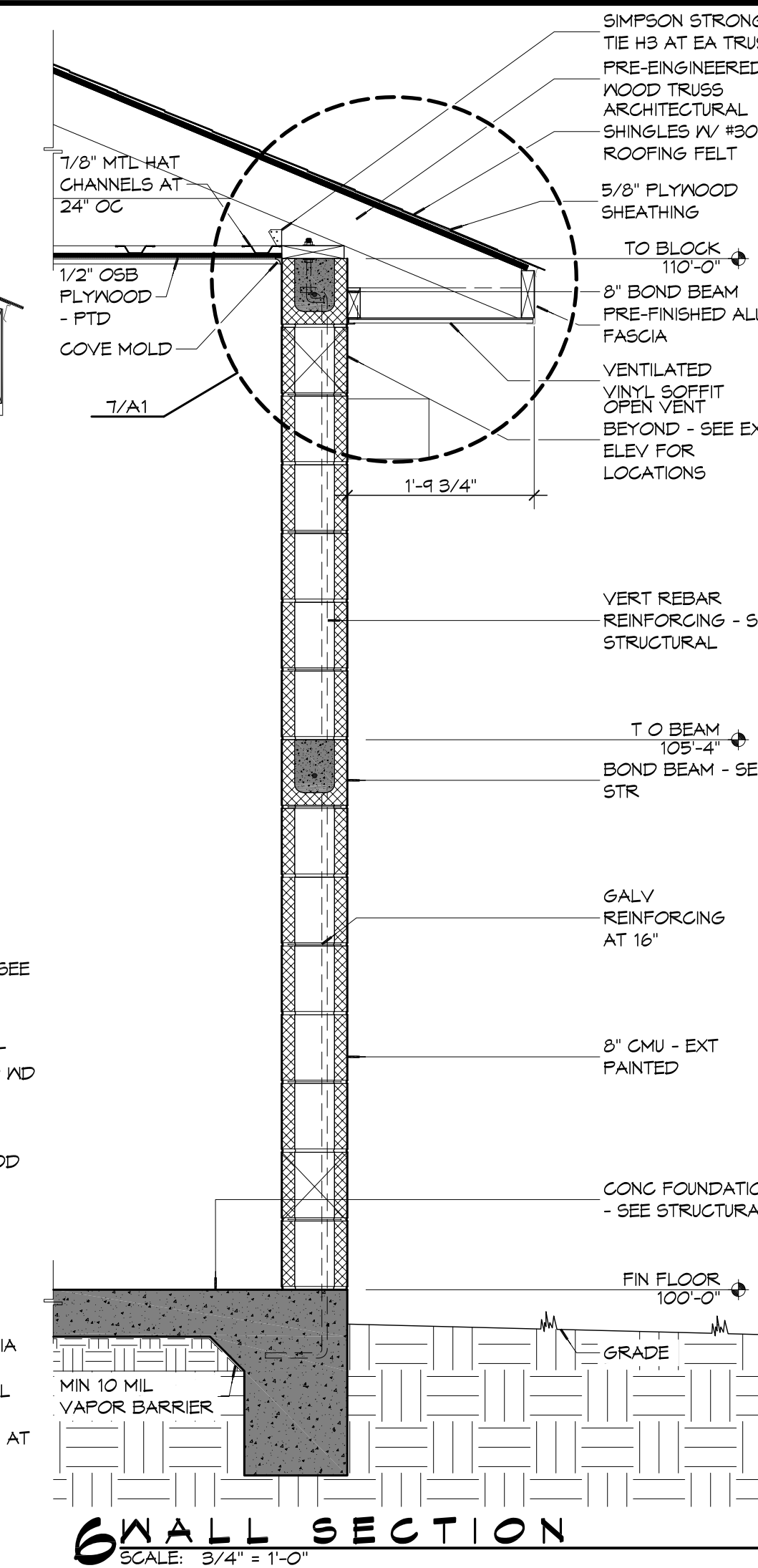
8 PARTITION TYPE
SCALE: 1/2" = 1'-0"



9 SECTION DETAIL
SCALE: 1 1/2" = 1'-0"



7 SECTION DETAIL
SCALE: 1" = 1'-0"



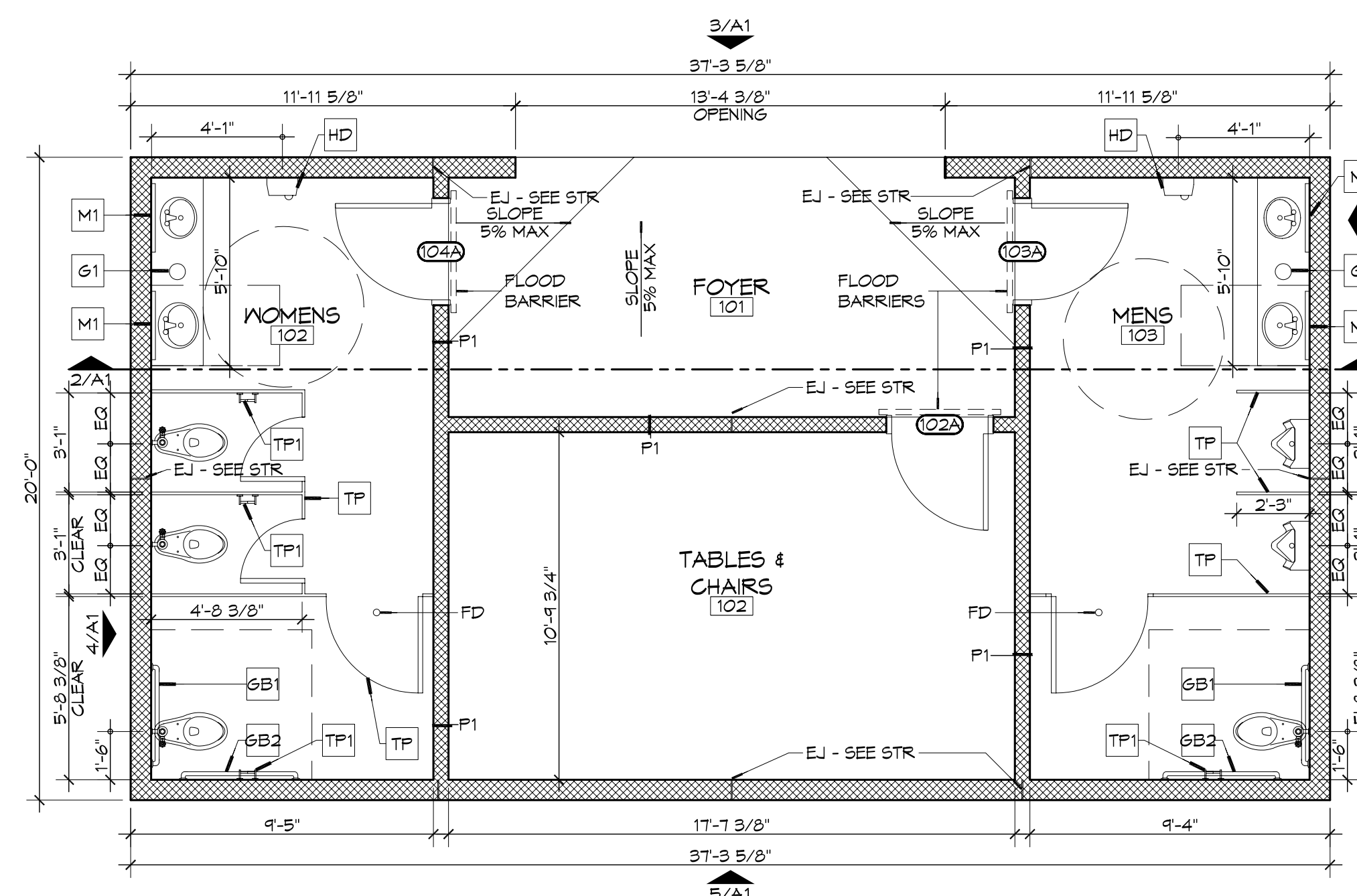
6 WALL SECTION
SCALE: 5/4" = 1'-0"

GENERAL NOTES

- PROVIDE 5" WIDE (MIN) LANDING, LEVEL WITH FINISHED FLOOR, OUTSIDE EXT DOORS. SEE SITE PAVING PLAN. THRESHOLDS SHALL BE NOT MORE THAN 1/2" IN HEIGHT AND SHALL BE BEVELED IF MORE THAN 1/4".
- CONTRACTOR TO VERIFY ALL SITE CONDITIONS, BUILDING LOCATIONS, AND DIMENSIONS PRIOR TO CONSTRUCTION.
- MATERIALS SHALL BE NEW AND UL LISTED.
- NO WORK SHALL BE CONCEALED UNTIL APPROVED BY LOCAL INSPECTORS.
- CONSTRUCTION SHALL COMPLY WITH ALL PARISH, STATE, AND LOCAL CODES.
- CONTRACTOR SHALL GUARANTEE ALL WORK FOR ONE CALENDAR YEAR.
- CONTRACTOR SHALL FURNISH WATER, SEWER, AND POWER FROM EXISTING SOURCES.
- EXTERIOR CAULKING SHALL BE DOW CORNING 790 SILICONE (OR APPROVED EQUAL). INSTALL IN ACCORDANCE WITH MFR RECOMMENDATION WITH ARCH/OWNER TO SELECT COLOR. INTERIOR CAULKING TO EQUAL TO DAP PAINTABLE LATEX WITH SILICONE.
- PAINT GRADE SHALL BE SHERWIN WILLIAMS OR EQUIVALENT. ALL WORK TO RECEIVE THREE (3) COATS (ONE PRIMER, TWO FINISH). COLOR TO BE SELECTED BY OWNER/ARCHITECT.
- PROVIDE CLEANUP ON A REGULAR BASIS. NO DEBRIS/TRASH SHALL BE STORED IN THE BUILDING.
- FLOOR SURFACES TO NON-SLIP IV LIGHT BROOM FINISH.
- LOCKS ON DOORS IN MEANS OF EGRESS SHALL NOT REQUIRE THE USE OF A KEY, SPECIAL KNOWLEDGE, OR SPECIAL DEVICE TO OPEN IN THE DIRECTION OF EGRESS. ALL DOORS SHALL HAVE LEVER TYPE HANDLES.
- INTERIOR WALLS AND CEILING SHALL HAVE A FLAME SPREAD OF 0-200 AND A SMOKE DEVELOPED RATING OF 0-450.

ACCESSORY SCHEDULE

MK	DESCRIPTION	MFR	MODEL #
GB1	36" SS GRAB BAR	BRADLEY	812 OR APPROVED EQUAL
GB2	42" SS GRAB BAR	BRADLEY	812 OR APPROVED EQUAL
M1	CHANNEL FRAME MIRROR	BRADLEY	T81 OR APPROVED EQUAL
HD	ELECTRIC HAND DRYER	SEE SHEET P1 FOR MFR AND MODEL #	
TP	TOILET PARTITIONS AND DOORS	SEE SPECIFICATIONS	
TP1	TOILET PAPER DISPENSER	BOBRICK	B-2888 OR APPROVED EQUAL
G1	PLASTIC TRASH GROMMET	DOUG MOCKETT	TM1-PLASTIC OR APPROVED EQUAL



1 ARCHITECTURAL FLOOR PLAN
SCALE: 1/4" = 1'-0"

DAMMON
ENGINEERING, INC.
Architects & Engineers
www.dammonengineering.com
info@dammoneng.com
554 Old Spanish Trail
Slidell, LA 70488
PH: 985.649.5832
F: 985.641.5990

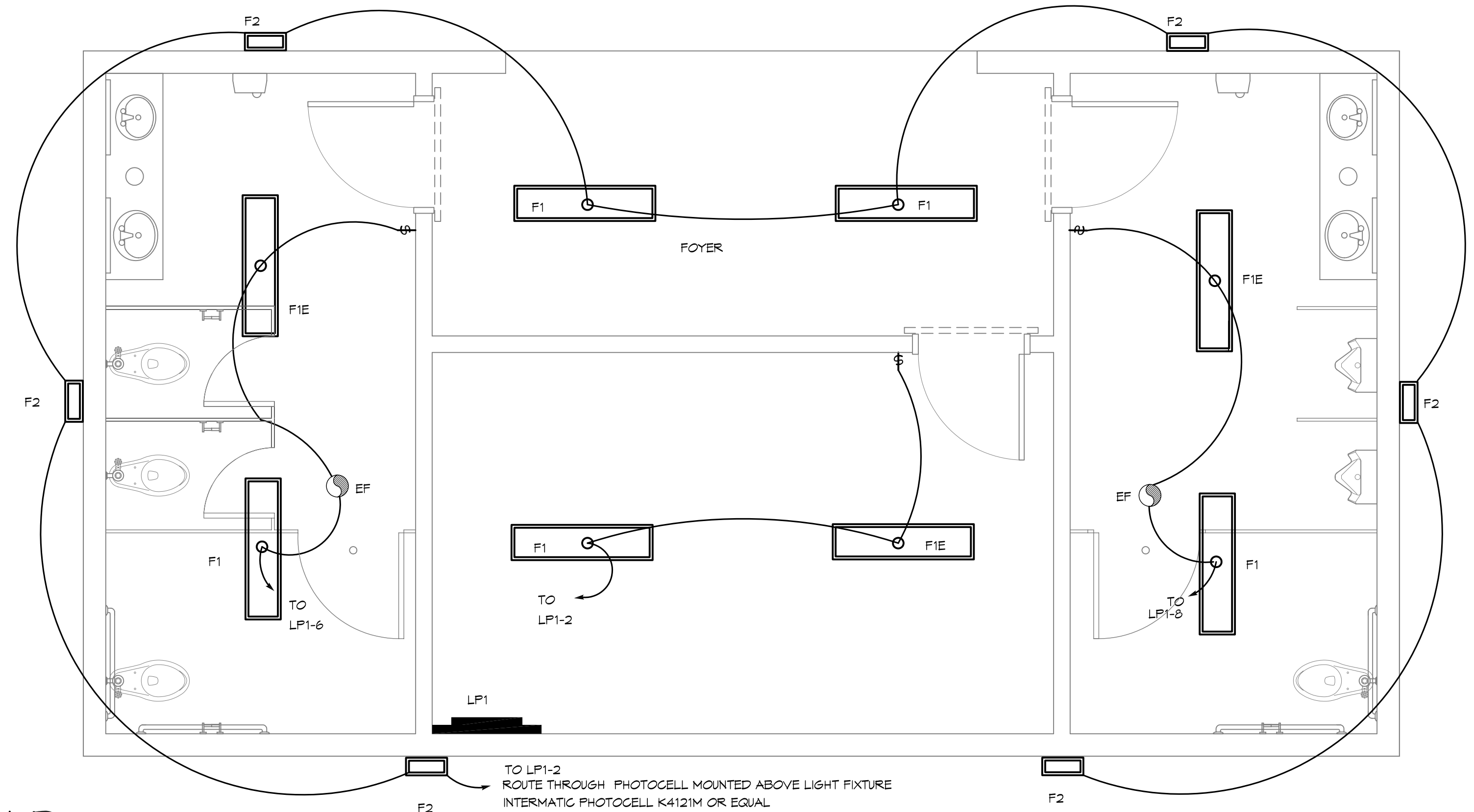
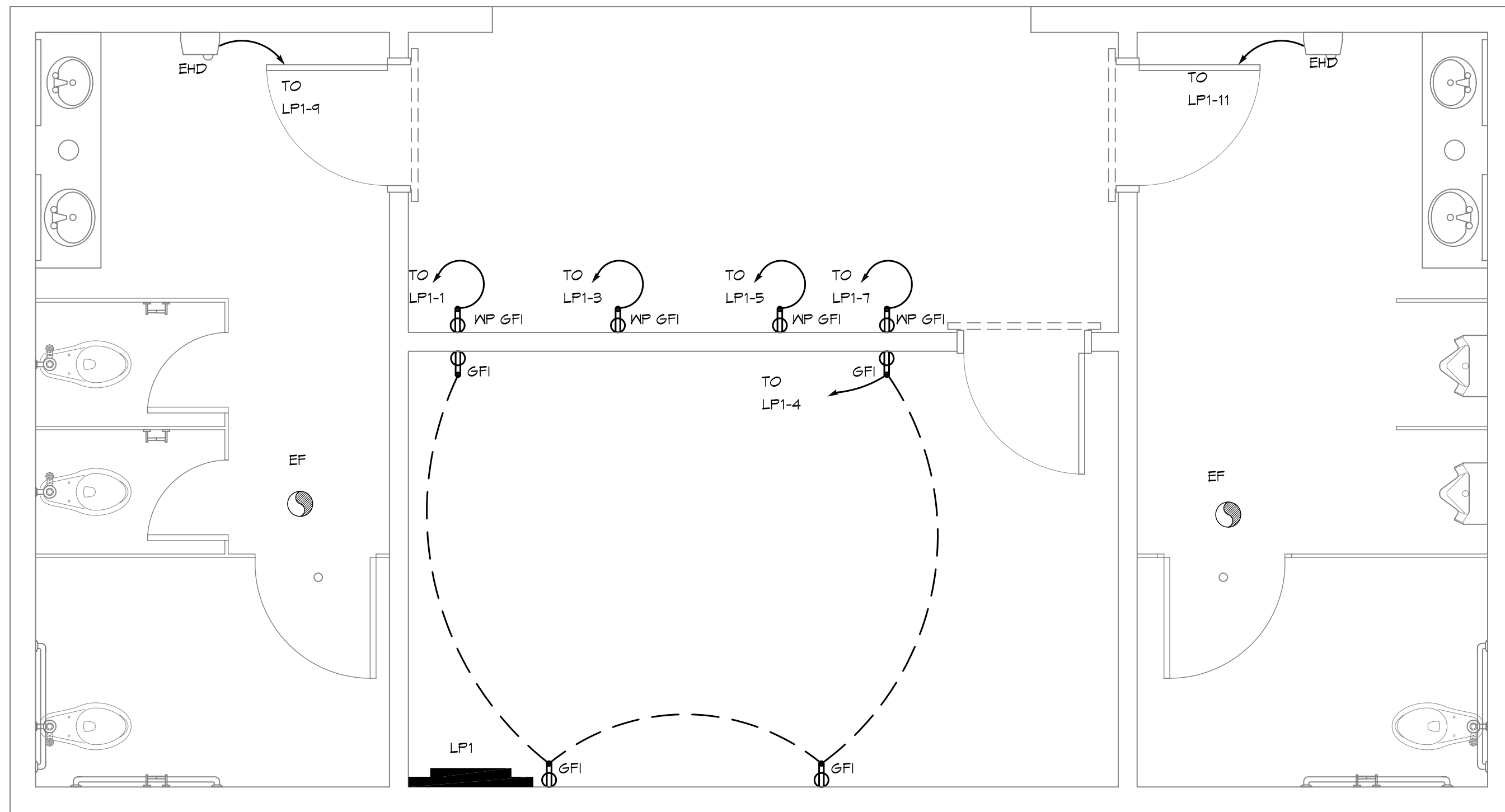
#	DESCRIPTION	DATE

SEAL:

CITY OF SLIDELL
**3RD STREET RESTROOMS/
VETERANS PARK
IMPROVEMENTS**
SLIDELL, LOUISIANA
JOB No: 210
DATE: 4/2/2014
DRAWN BY: KJK
CHECKED BY: CKD, KJK

SHEET TITLE:
ARCHITECTURAL FLOOR
PLAN, SECTIONS,
DETAILS AND EXTERIOR
ELEVATIONS
DRAWING NUMBER:
A1

SHEET No: 5 of 8



2 ELECTRICAL PLAN - POWER
SCALE: 3/8" = 1'-0"

1 ELECTRICAL PLAN - LIGHTING
SCALE: 3/8" = 1'-0"

LEGEND

- GFI RECEPTACLE 20A 120V AT 36" A.F.F.
- FLUSH MOUNTED LIGHT SWITCH WITH STAINLESS STEEL DEVICE PLATE, 120V 20A, MOUNT CENTER @48" A.F.F.
- CEILING EXHAUST FAN
- ELECTRIC HAND DRYER, WORLD DRYER, MODEL DA52-473 OR EQUAL
- POWER PANEL

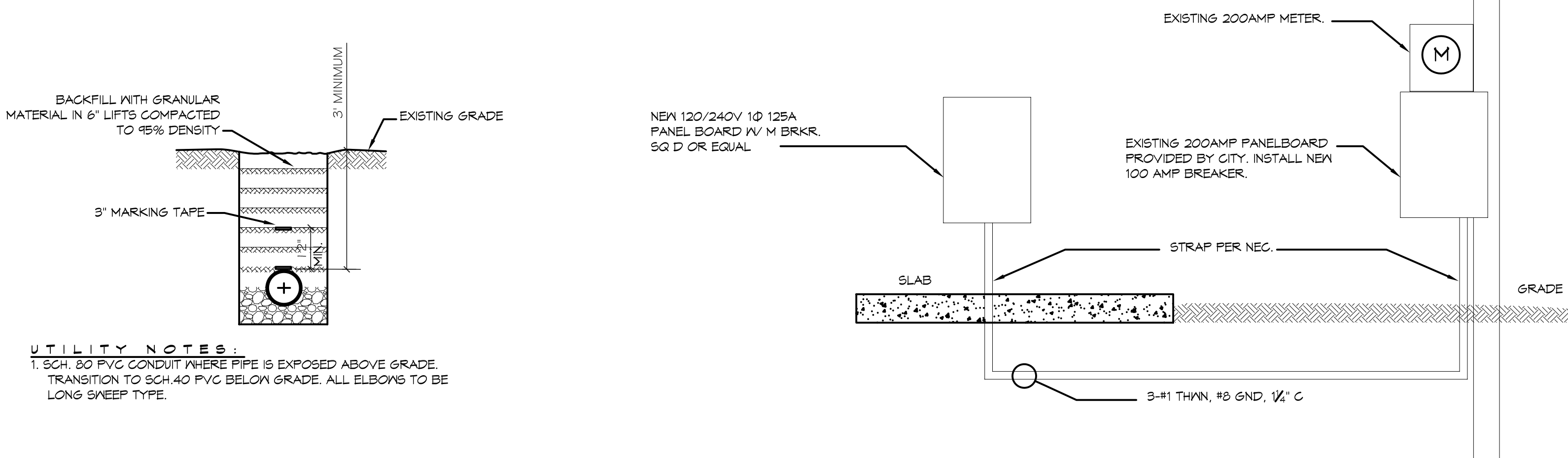
LIGHTING FIXTURE SCHEDULE

MARK	DESCRIPTION
F1	SURFACE MOUNTED 1'x4' FLUORESCENT LIGHT FIXTURE (2 BULB), TAMPER RESISTANT AND SUITABLE FOR DAMP LOCATIONS; PM3X 3 32 12LD MVOLT GEB10IS OR EQUAL
F1E	SURFACE MOUNTED 1'x4' FLUORESCENT LIGHT FIXTURE (2 BULB), TAMPER RESISTANT AND SUITABLE FOR DAMP LOCATIONS IV 90 MIN. BACKUP POWER; PM3X 3 32 12LD MVOLT GEB10IS OR EQUAL
F2	WALL SCONCE, WITH VANDAL GUARD, PER-LED 100MA SRI MVOLT SF V6, OR EQUAL, COLOR TO BE SELECTED BY ARCHITECT; MOUNT 12" BELOW SOFFIT. SEE EXTERIOR ELEVATIONS, ON SHEET A-1, FOR MOUNTING LOCATIONS.
EHD	ELECTRIC HAND DRYER, WORLD DRYER, MODEL DA52-473 OR EQUAL.

ELECTRICAL NOTES

1. ALL WORK SHALL CONFORM TO THE LATEST EDITION OF THE NATIONAL ELECTRICAL CODE, THE GOVERNING ELECTRICAL CODE AND ALL OTHER INSPECTION DEPARTMENTS HAVING JURISDICTION. OBTAIN CERTIFICATES OR APPROVAL WHERE REQUIRED.
2. ALL MATERIALS FURNISHED SHALL BE NEW AND SHALL BE U.L. LISTED.
3. THE DRAWINGS INDICATE SIZE AND GENERAL LOCATION OF WORK. SCALE DIMENSIONS SHALL NOT BE USED. THE EXACT LOCATION AND LOCATION OF ALL LIGHTING FIXTURES, RECEPTACLES AND TELEPHONE OUTLETS, ETC. SHALL BE DETERMINED BY ACTUAL CONDITIONS IN THE FIELD.
4. PRIOR TO BIDDING, CONTRACTOR SHALL VISIT THE JOB SITE AND FAMILIARIZE THEMSELVES WITH THE EXISTING CONDITIONS.
5. ELECTRICAL CONTRACTOR SHALL COORDINATE HIS WORK WITH OTHER TRADES AND WITH OTHER CONTRACTORS WHOSE WORK MAY AFFECT THIS INSTALLATION.
6. ELECTRICAL CONTRACTOR SHALL COORDINATE INCOMING ELECTRICAL SERVICE WITH UTILITY COMPANY AND INCLUDE IN HIS BID ALL CHARGES AND FEES INCURRED IN MODIFICATIONS.
7. WHERE MORE THAN ONE SWITCH OCCURS IN THE SAME LOCATION, THEY SHALL BE INSTALLED IN A GANG TYPE BOX UNDER ONE COVER PLATE.
8. ELECTRICAL CONTRACTOR, BEFORE INSTALLING ANY OF THE WORK, SHALL SEE THAT IT DOES NOT INTERFERE WITH CLEARANCES REQUIRED FOR FINISHED COLUMNS, HUNG CEILING, PLASTER, PARTITIONS, WALLS, ETC. AS SHOWN IN THE ARCHITECTURAL DRAWINGS AND DETAILS. IF ANY WORK IS INSTALLED AND IT LATER DEVELOPS THAT SUCH DETAILS OR DESIGN CANNOT BE FOLLOWED, THE CONTRACTOR, AT HIS OWN EXPENSE, SHALL MAKE SUCH CHANGES IN THE WORK AS DIRECTED BY THE ARCHITECT, AS WELL AS TO PERMIT THE INSTALLATION OF THE ARCHITECTURAL WORK AS SHOWN ON THE PLANS AND DETAILS.
9. PERFORM TEST REQUIRED BY THE OWNER OR THE ENGINEER IN CONNECTION WITH THE OPERATION OF THE ELECTRICAL SYSTEM IN THE BUILDING.
10. ALL TESTS SHALL BE MADE IN ACCORDANCE WITH THE LATEST STANDARD OF THE IEEE AND THE NATIONAL ELECTRICAL CODE.
11. MINIMUM CONDUCTOR SIZE SHALL BE #12, 600V INSULATION. MINIMUM SIZE CONDUIT SHALL BE 3/4" EMT FOR INTERIOR USE, AND 3/4" RIGID ALUMINUM FOR EXTERIOR USE. USE TYPE MC CABLE COPPER, FOR LIGHTS AND RECEPTACLE CIRCUITS. EXTERIOR FITTINGS SHALL BE CAST BOXES AND COVERS. INTERIOR FITTINGS SHALL BE CAST WHERE EXPOSED ON WALLS. STAMPED BOXES MAY BE USED ABOVE CEILING IN AIR CONDITIONED SPACES.
12. CONTRACTOR SHALL INSTALL WIRING AND OTHER CIRCUIT COMPONENTS TO MATCH EQUIPMENT ACTUALLY INSTALLED.
13. INSTALL GROUND FAULT RECEPTACLES AT RECEPTACLE LOCATIONS WITHIN 5' OF SINKS OR LAVATORIES, AND AT EXTERIOR LOCATIONS. EXTERIOR RECEPTACLES SHALL ALSO BE WEATHERPROOF.
14. BONDING AND GROUNDING SHALL BE IN ACCORDANCE WITH NFPA 70-230-63, NFPA 250-23, 250-11 & 250-12.
15. GROUND NEUTRAL IN ACCORDANCE WITH NFPA 70-250-230.
16. FUSES SHALL BE ITT CLASS K5, 250 VOLT, 200,000 AMP INTERRUPTING CAP.
17. EXTERIOR LIGHTING SHALL BE SHADED OR INWARDLY DIRECTED IN SUCH A MANNER SO THAT NO DIRECT LIGHTING OR GLARE IS CAST BEYOND THE PROPERTY LINE. THE INTENSITY OF SUCH LIGHTING SHALL NOT EXCEED ONE FOOT CANDLE AS MEASURED AT THE ADJUTING PROPERTY LINE.
20. ALL ELECTRICAL, MECHANICAL AND PLUMBING PENETRATING FIRE PARTITIONS SHALL BE FIRE CAULKED. (PENETRATIONS THROUGH RATED CONSTRUCTION SHALL BE SEALED WITH A MATERIAL CAPABLE OF PREVENTING THE PASSAGE OF FLAMES AND HOT GASES WHEN TESTED IN ACCORDANCE WITH ASTM-E814.)

CKT. NO.	THIN WIRE SIZE	LOAD DESCRIPTION	BREAKER AMP	POLE	LOAD (VA)	AG	BG	LOAD (VA)	BREAKER AMP	POLE	LOAD DESCRIPTION	THIN WIRE SIZE	CKT. NO.
1	#12	VENDING MACHINE	15	1	1440			840	1	20	EXTERIOR, FOYER AND STORAGE LIGHTING	#12	2
3	#12	VENDING MACHINE	15	1	1440			840	1	20	STORAGE OUTLETS	#12	4
5	#12	VENDING MACHINE	15	1	1440			550	1	20	WOMENS ROOM FLORESCENT LIGHTING AND EXHAUST FAN	#12	6
7	#12	VENDING MACHINE	15	1	1440			550	1	20	MENS ROOM FLORESCENT LIGHTING AND EXHAUST FAN	#12	8
9	#10	EHD, WOMENS	20	1	1725			-	1	20	SPARE	-	10
11	#10	EHD, MENS	20	1	1725			-	1	20	SPARE	-	12
13	-	SPACE	-	-	-			-	-	-	SPACE	-	14
15	-	SPACE	-	-	-			-	-	-	SPACE	-	16
17	-	SPACE	-	-	-			-	-	-	SPACE	-	18
19	-	SPACE	-	-	-			-	-	-	SPACE	-	20
21	-	SPACE	-	-	-			-	-	-	SPACE	-	22
23	-	SPACE	-	-	-			-	-	-	SPACE	-	24
					TOTAL CONNECTED LOAD (VA): 11,790								
					AG=5,935		BG=5,795						
					SOLID NEUTRAL NEUTRAL WIRE (N)					GROUND BUS GROUND WIRE (G)			



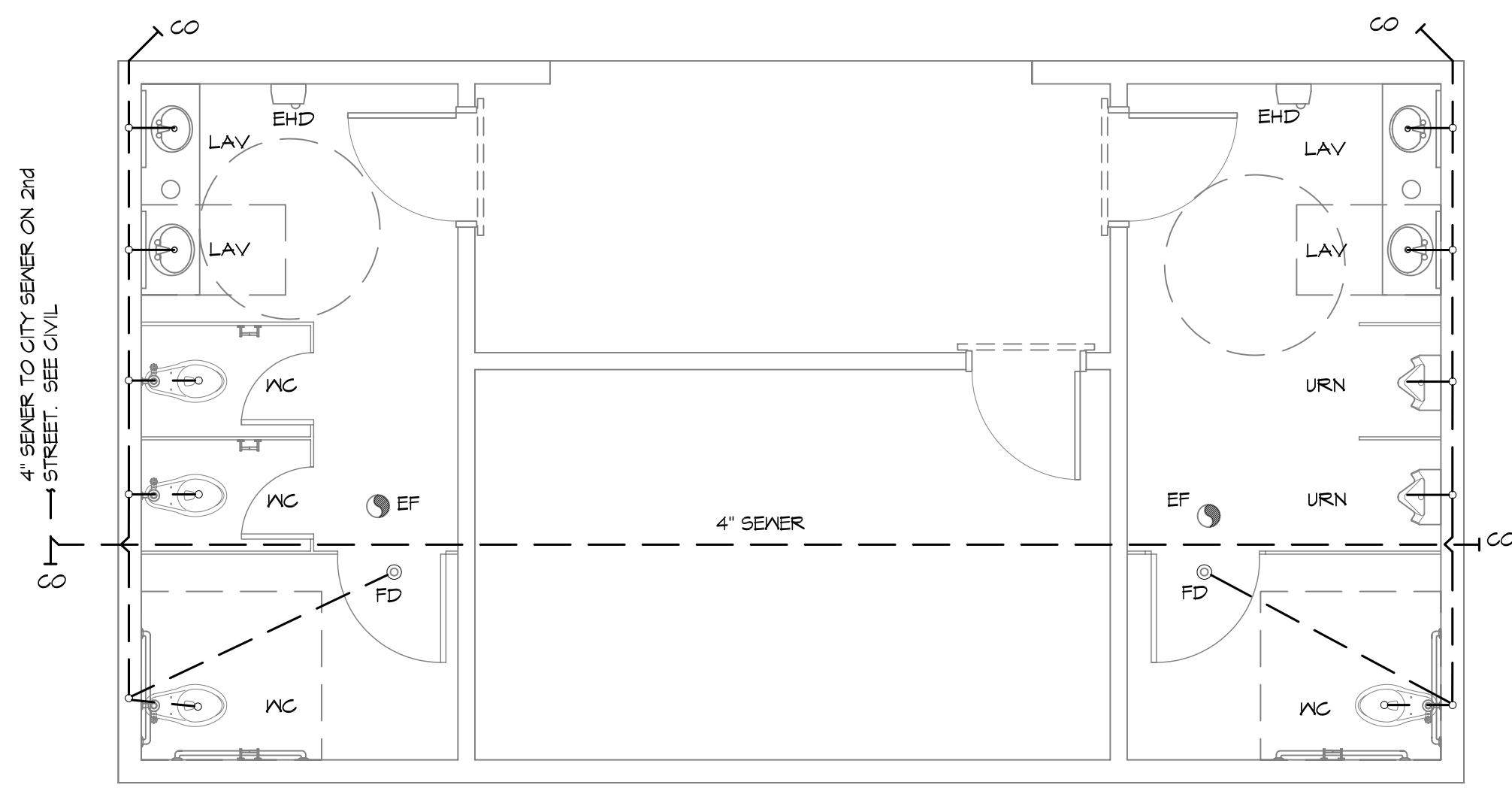
DAMMON ENGINEERING, INC.
Architects & Engineers
www.dammonengineering.com
info@dammonengineering.com
Chief Architect: Kevin J. Kinchen, NCARB
Chief Engineer: Brian Mistich, PE
554 Old Spanish Trail
Slidell, LA 70458
PH: 985-641-5832
F: 985-641-5990

DATE	REVISIONS	#	DESCRIPTION

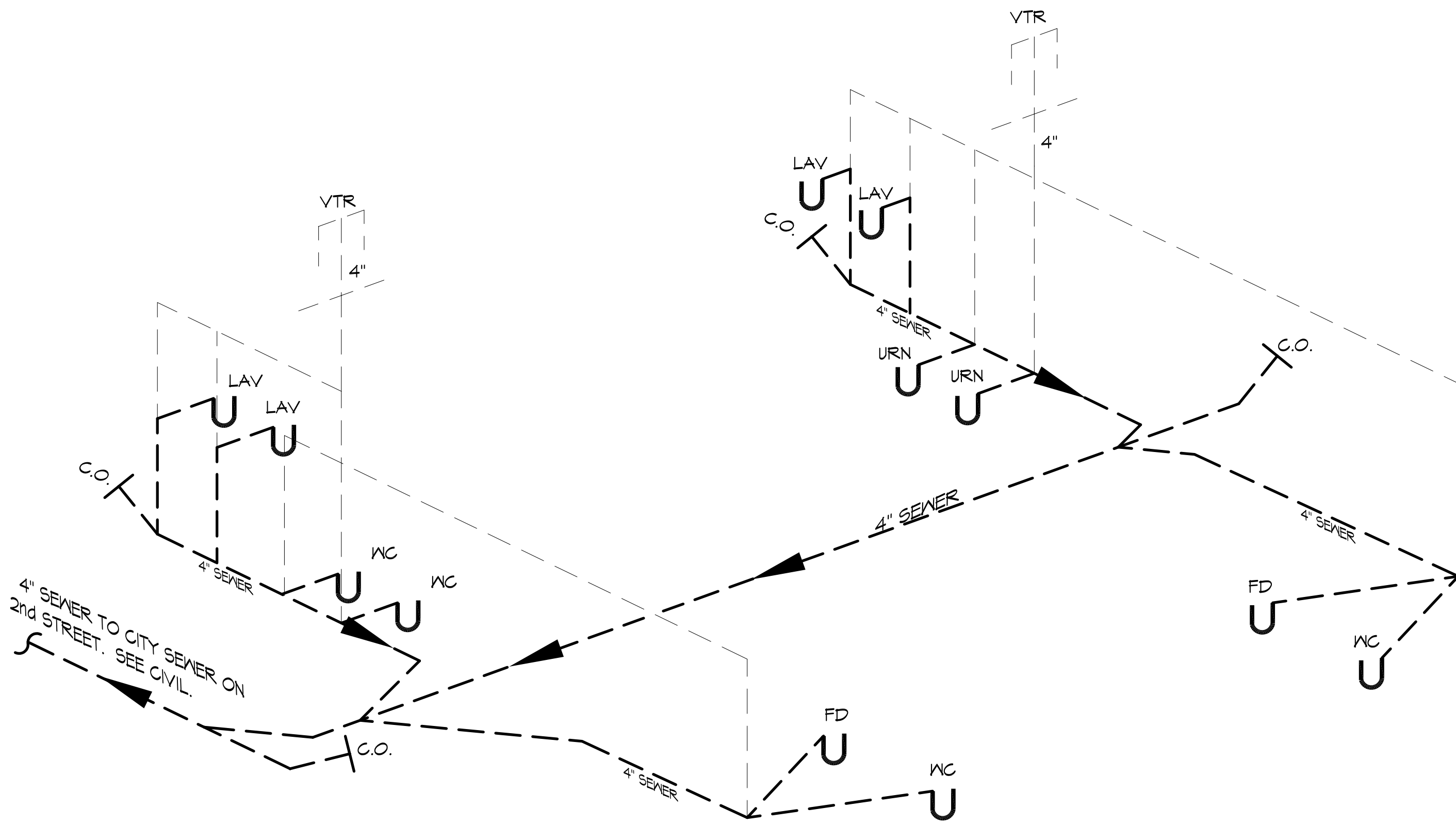
SEAL:

CITY OF SLIDELL
BRD STREET RESTROOMS / VETERANS PARK IMPROVEMENTS
SLIDELL, LOUISIANA
JOB NO.:
DATE: 4/2/2014
DRAWN BY: K-K, DFD
CHECKED BY: GKD

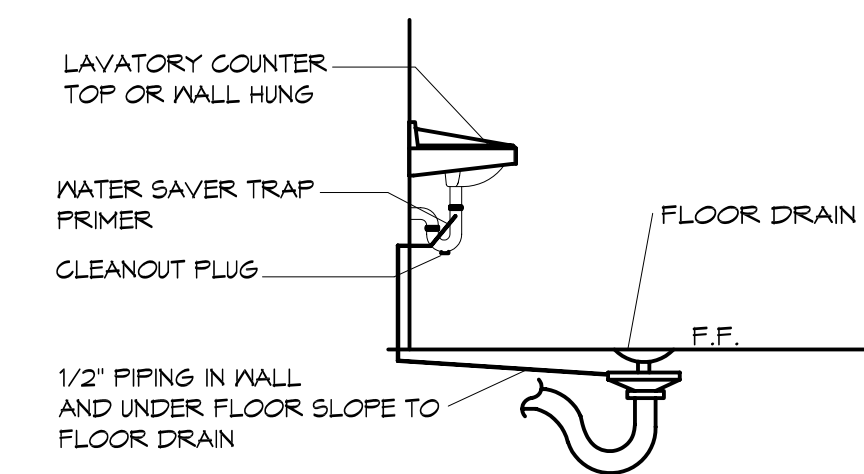
SHEET TITLE:
ELECTRICAL POWER AND LIGHTING PLANS
DRAWING NUMBER:
11
SHEET No: 7 of 8



1 PLUMBING PLAN
SCALE: 1/4" = 1'-0"

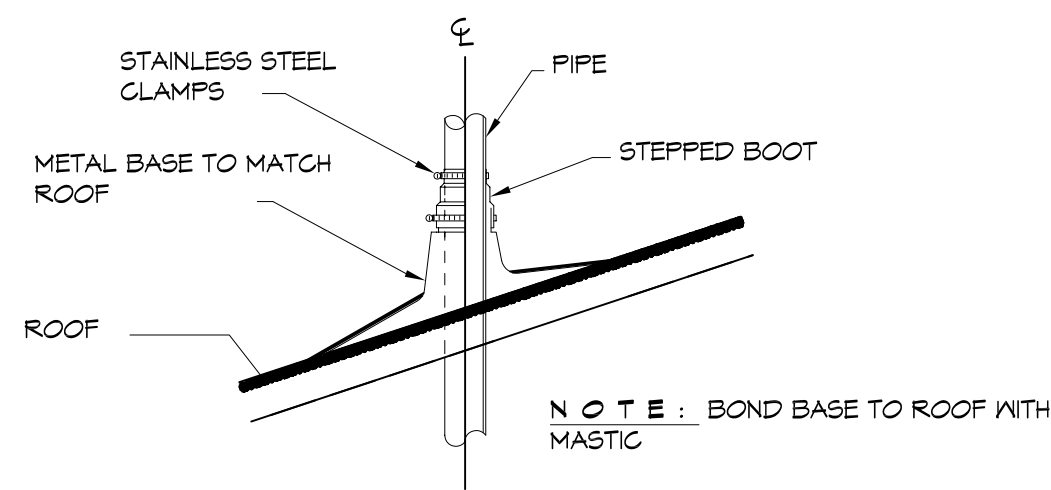


2 PLUMBING RISER DIAGRAM
SCALE: N.T.S.



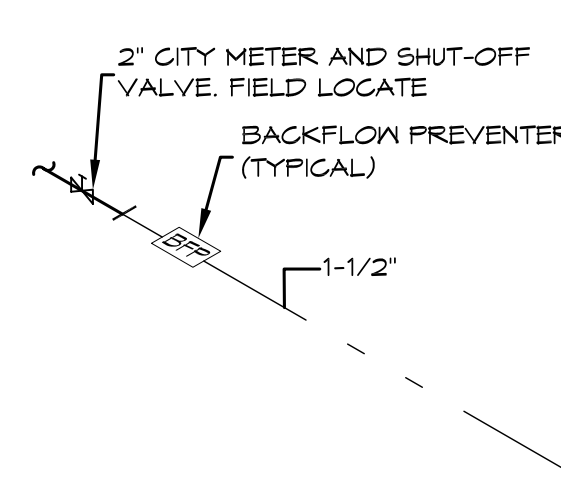
3 TYPICAL DETAIL
SCALE: N.T.S.

FLOOR DRAIN



4 TYPICAL DETAIL
SCALE: N.T.S.

VENT THRU ROOF



5 TYPICAL DETAIL
SCALE: N.T.S.

WATER METER SERVICE

PLUMBING FIXTURE SCHEDULE

ITEM	DESCRIPTION	SOIL OR WASTE	VENT	COLD WATER	HOT WATER	DESCRIPTION (AMERICAN STANDARD FIXTURE EXCEPT AS NOTED)	NOTES
WC	WATER CLOSET	4"	4"	1"	—	KOHLER K-4368 WITH ZURN Z-6000XL SUPPLY FITTING AND BENEKE 52755 ELONGATED WHITE SEAT, WITH BOLT CAPS.	1 4 2
URN	URINAL WALL HUNG	1 1/2"	1 1/2"	1"	—	KOHLER K-5016-T WITH ZURN Z-6003XL SUPPLY FITTING, PROVIDE Z-1222 URINAL CARRIER w/ BEARING PLATE.	1 4 2
LAV	LAVATORY	1 1/2"	1 1/2"	1/2"	—	AMERICAN STANDARD AQUALYN DROP-IN SINK, 0475.047; WITH BRADLEY AERADA 1200 SERIES	2 4 3
FD	FLOOR DRAIN	3"	2"	—	—	COATED CAST IRON WITH ADJUSTABLE NICKEL BRONZE GRATE, TRAP PRIMER CONNECTION AND DEEP SEAL TRAP, EQUAL TO JAY R. SMITH 2010-B-P.	2
WCO	WALL CLEAN-OUT	—	—	—	—	MADE #N-8453-R6, WITH BRASS PLUG AND ROUND STAINLESS STEEL SECURED ACCESS COVER.	2
EF	CEILING EXHAUST FAN	—	—	—	—	EXHAUST FAN WITH GRILL AND BACKDRAFT DAMPER, GREENHECK SP-A200, T"Ø UP TO GREENHECK MDL RCG-T CURB CAP W/CURB ON ROOF.	2

1. PROVIDE ADA FIXTURE.
2. PROVIDE LISTED FIXTURE(S) OR EQUAL.
3. INSULATE PIPING FOR HANDICAP FIXTURE.

PLUMBING NOTES

1. PROVIDE ALL LABOR, MATERIAL AND EQUIPMENT FOR A COMPLETE OPERATING SYSTEM. THE SYSTEM SHALL INCLUDE COLD WATER PIPING, SEWER AND VENT PIPING, INSULATION, HANGERS, VALVES, SUPPORTS WITHOUT ANY RESTRICTIONS TO COLUMN, CUT AND PATCH AS REQUIRED TO INSTALL PIPES.
2. ALL WORK AND MATERIAL SHALL CONFORM STRICTLY TO THE LATEST LOCAL, CITY, PARISH, STATE AND NATIONAL GOVERNING CODES.
3. CONTRACTOR IS TO FIELD VERIFY ALL EXISTING UTILITY LOCATIONS, ELEVATIONS AND SIZES PRIOR TO COMMENCING ANY WORK. CONTRACTOR SHALL PAY NECESSARY FEES FOR THE UTILITIES CONNECTIONS.
4. CONTRACTOR IS RESPONSIBLE TO VERIFY THE EXISTING INVERTS AND SET NEW INVERTS OF SEWERAGE AND DRAINAGE PIPES.
5. SEWERAGE LINES 3-INCH AND SMALLER SHALL BE SLOPED 1/4" PER FOOT AND LINE 4-INCH AND LARGER SHALL BE 1/8" PER FOOT.
6. TEST ALL PIPING AT REQUIRED PRESSURE.
7. ALL PLUMBING SHALL BE CLOSELY COORDINATED WITH STRUCTURAL SYSTEM, MECHANICAL SYSTEM AND ELECTRICAL TO INSURE NO TRADES WILL CONFLICT WITH EACH OTHER.
8. DO NOT SCALE DRAWINGS. SEE ARCHITECTURAL DRAWINGS FOR EXACT LOCATIONS OF DOORS, WINDOWS, WALLS, FIXTURES, ETC.
9. ALL WATER MAINS AND PIPING NOT SHOWN FOR CLARITY. ALL LOCATIONS FIELD VERIFIED.
10. DOMESTIC HOT AND COLD WATER PIPING AND FITTINGS UNDER SLAB SHALL BE ASTM B88 COPPER WATER TUBE, TYPE K SOFT ANNEALED. NO JOINTS SHALL BE ALLOWED UNDER THE SLAB.
11. DOMESTIC WATER PIPING AND FITTINGS ABOVE THE SLAB SHALL BE ASTM B88 COPPER WATER TUBE, TYPE L, HARD DRAWN WITH COPPER PRESSURE TYPE FITTINGS, ANSI B16.22. THE JOINTS SHALL BE SOLDERED TYPING USING ASTM B32, ALLOY GRADE #5A (95-5) SOLDER.
12. SOIL, WASTE, VENT PIPING AND FITTINGS ABOVE THE SLAB SHALL BE SERVICE WEIGHT CAST IRON PIPE WITH BELL AND SPIGOT ENDS AND ONE PIECE NEOPRENE INSERT TYPE GASKET. USE PVC SCHEDULE 40 OR ABS DWV PIPES AND FITTINGS WHERE PERMITTED BY CODE.
13. ALL WATER PIPING AND FITTINGS ABOVE THE FLOOR SHALL BE INSULATED WITH 3/4" THICK FIBERGLASS INSULATION AND JACKET.
14. ALL ELECTRICAL, MECHANICAL AND PLUMBING PENETRATING FIRE PARTITIONS SHALL BE FIRE CAULKED. (PENETRATIONS THROUGH RATED CONSTRUCTION SHALL BE SEALED WITH A MATERIAL CAPABLE OF PREVENTING THE PASSAGE OF FLAMES AND HOT GASES WHEN TESTED IN ACCORDANCE WITH ASTM-E814.)
15. ALL PLUMBING LINES SHOWN ARE DIAGRAMATIC.

DAMMON
ENGINEERING, INC.
Architects & Engineers

Chief Architect: Kevin J. Kinchen, NCARB
Chief Engineer: Brian Mistich, PE
www.dammonengineering.com
info@dammonengineering.com
554 Old Spanish Trail
Slidell, LA 70468
PH: 985.641.5832
F: 985.641.5990

#	DESCRIPTION	DATE

SEAL:

CITY OF SLIDELL
**3RD STREET RESTROOMS/
VETERANS PARK
IMPROVEMENTS**
SLIDELL, LOUISIANA
JOB NO.:
DATE: 4/2/2014
DRAWN BY: KJK
CHECKED BY: CKD

SHEET TITLE:
PLUMBING PLAN

DRAWING NUMBER:
01