

BACKFILL WITH GRANULAR MATERIAL IN 6" LIFTS COMPACTED TO 95% DENSITY (BACKFILL MUST BE ACCEPTABLE MATERIAL W/ APPROVAL OF ENGINEER)

EXIST. GROUND

VARIES

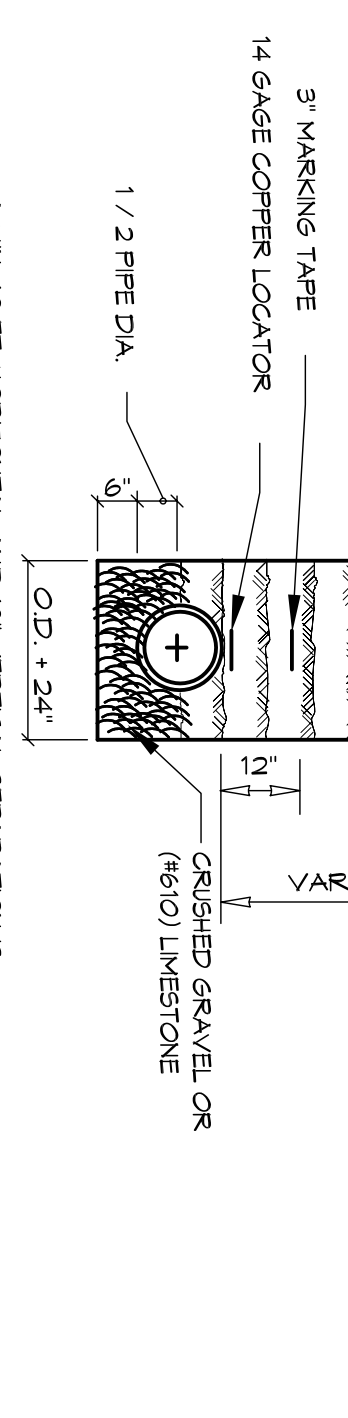
CRUSHED GRAVEL OR (6/10) LIMESTONE

1 1/2 PIPE DIA.

3" MARKING TAPE

14 GAUGE COPPER LOCATOR

A MIN. 10' FT. HORIZONTAL AND 18" VERTICAL SEPARATION IS REQUIRED BETWEEN WATER & SEWER LINE.



**PIPE BEDDING DETAIL FOR SEWER & WATER LINE**  
NTS.

**CONCRETE MIX DESIGN**

MIX FOR ONE CUBIC YARD OF FIBER-REINFORCED CONCRETE:

28 DAY STRENGTH: 4000 PSI

CEMENT (ASTM C-150, TYPE I/II): 1.64 BAGS (148 LBS.)

FLY ASH (ASTM C-618): 1.16 BAGS (104 LBS.)

GRAVEL (ASTM C-33, GRADE A): 1226 LBS.

SAND (ASTM C-33): 30 GALLONS (250 LBS.)

WATER (PROF. TEST): 34.5 GAL

WATER REDUCER (ASTM C-494): 5% BY VOLUME, USE PER MANUFACTURER'S SPECIFICATIONS

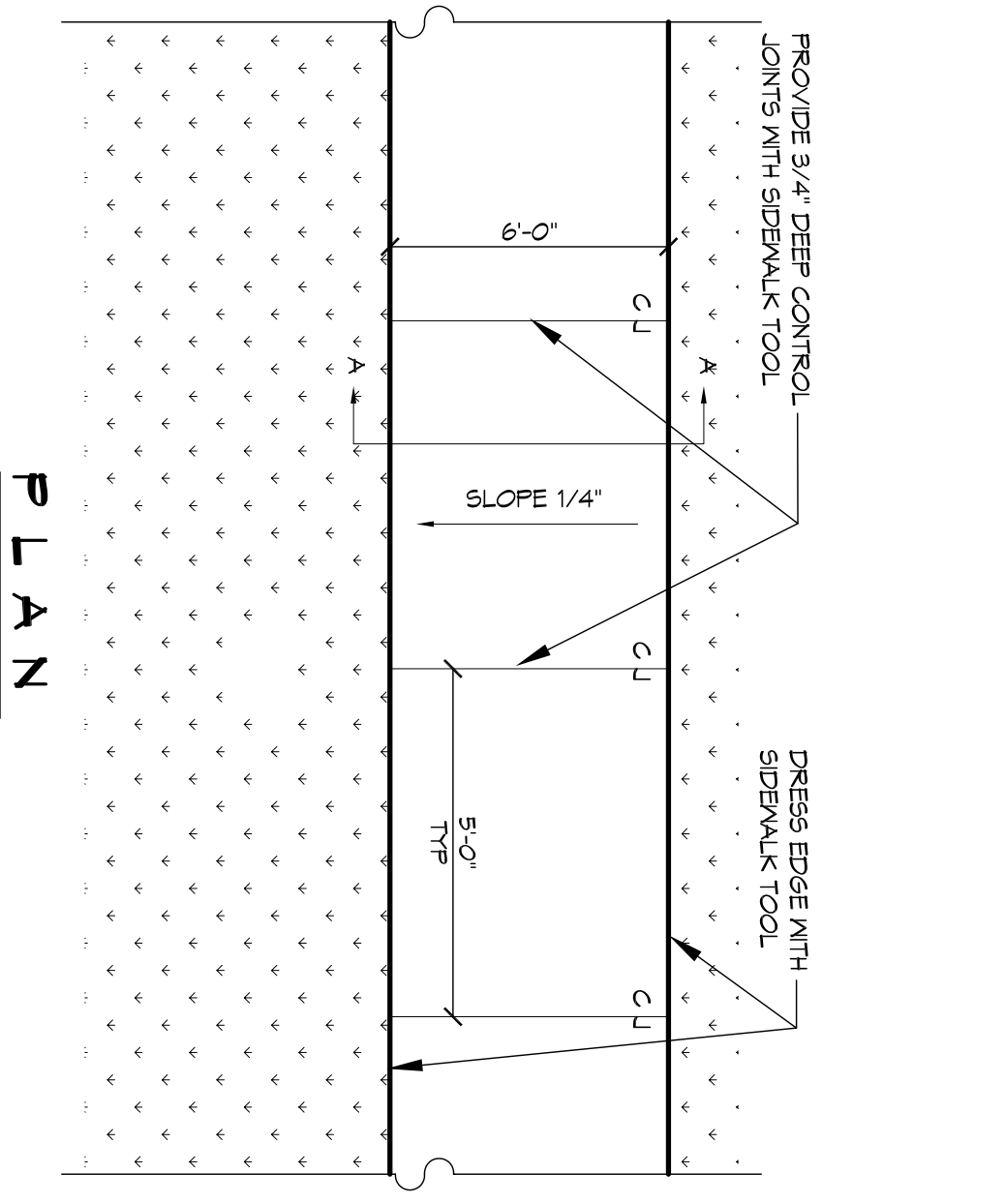
FIBER REINFORCEMENT: 1.5 LBS./CY MICROFIBERS, AS SPECIFIED BELOW

FIBER REINFORCEMENT FOR ALL CONCRETE SIDEWALKS AND DRIVEWAYS SHALL BE MATRIX NONFLAMMENT MICROFIBER AS MANUFACTURED BY FIBER INDUSTRIES OR APPROVED EQUAL, APPLIED THROUGHOUT THE CONCRETE MIXTURE. ALTERNATE PRODUCTS MUST BE PRE-APPROVED BY THE CITY ENGINEER IN WRITING. CELLULOSE TREATED OR INTENDED), AS GLASS FIBER AND POLYESTER FIBERS ARE SPECIFICALLY PROHIBITED FROM USE.

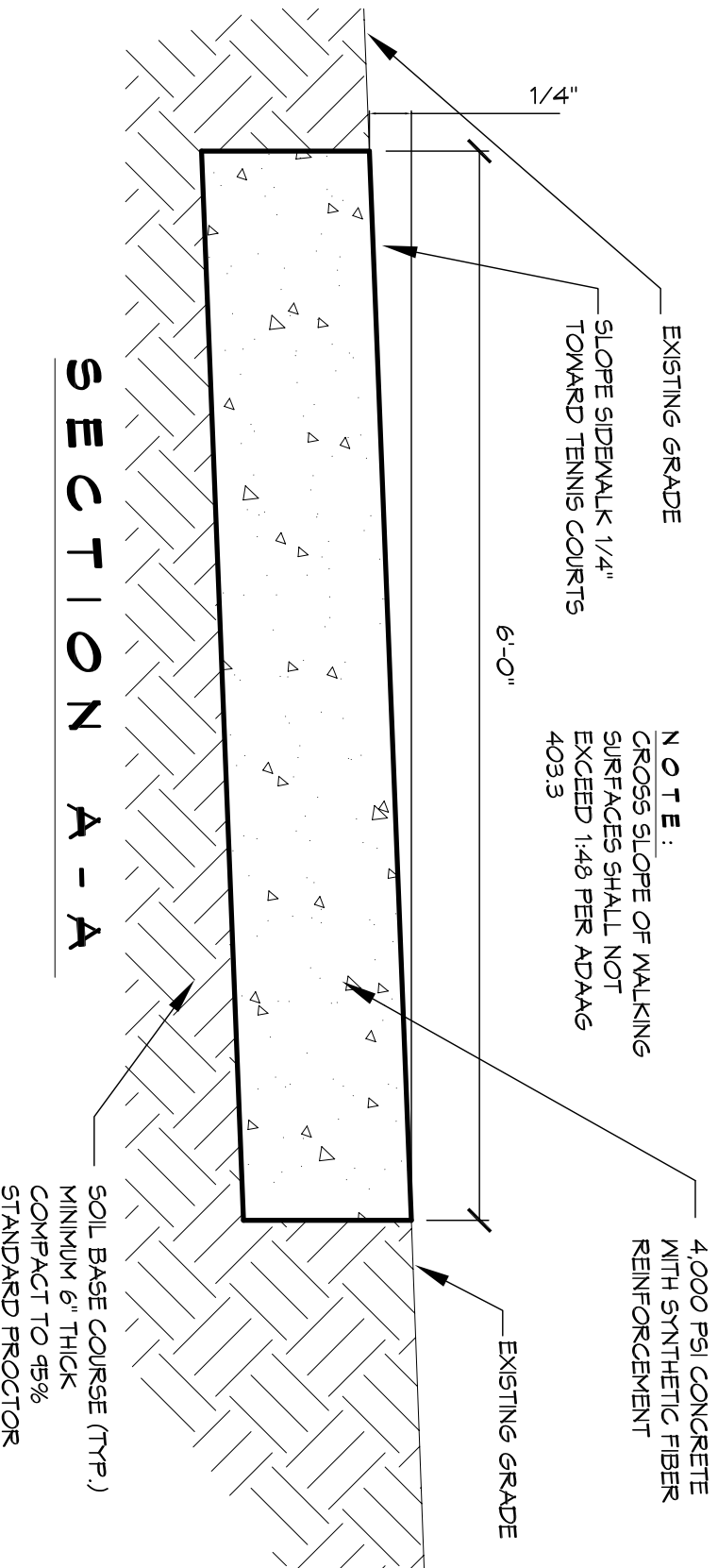
CONTRACTOR SHALL FINISH ALL MATERIALS, LABOR, AND EQUIPMENT NEEDED TO CONSTRUCT HANDICAP RAMPS, AT INTERSECTIONS, MEDIANS, OR AS DIRECTED BY THE CITY ENGINEER. THE CONCRETE USED TO CONSTRUCT THE RAMPS SHALL BE SIX (6) INCH THICK 4000-PSI AT 28 DAYS, WHERE NECESSARY OR AS DIRECTED BY THE CITY ENGINEER. EXISTING SIDEWALK SHALL BE REMOVED AND REPLACED WITH NEW PORTLAND CEMENT CONCRETE. SIDEWALK AND TRUNCATED DOME TILE AS STIPULATED ACCORDING TO AMERICAN DISABILITY ACT REQUIREMENT. TRUNCATED DOME TILE SHALL BE MINIMUM 1/4 INCH THICK WITH DEEPER TRUNCATED DOME. 3 INCHES ON CENTER FROM CENTER TO CENTER. THE TRUNCATED DOME TILE SHALL BE ANCHORED INTO THE CONCRETE. THESE ARE HANDICAP RAMPS SHALL CONSIST OF ONLY ONE TILE WHICH SHALL BE ANCHORED INTO THE CONCRETE. THESE ARE A NO DIRECT PAY ITEM.

**SIDEWALK NOTES**

1. SIDEWALKS SHALL BE LOCATED AS NOTED. FIELD VERIFY WITH CITY ENGINEERING AND DAMMON ENGINEERING PRIOR TO FORMING. SLOPE DIMENSION TO PRELIMINARY LOCATE SIDEWALKS IS PERMITTED.
2. ALL SIDEWALKS SHALL BE CONSTRUCTED OF PORTLAND CEMENT CONCRETE AND HAVE A MIN. THICKNESS OF 4".
3. SAND BASE COURSE (TYP) SHALL HAVE A MINIMUM OF 6" THICK STANDARD PROCTOR.
4. PROVIDE SYNTHETIC FIBER REINFORCING IN ACCORDANCE WITH ASTM C 1116 IN ALL CONCRETE SIDEWALKS.
5. ALL SIDEWALKS SHALL BE SLOPED TO A DEPTH OF 3/4" AT ACTIVE FOOT INTERALS.
6. ALL SIDEWALKS SHALL BE SLOPED TO A DEPTH OF 3/4" AT ACTIVE FOOT INTERALS.
7. PROVIDE DETECTABLE MARKING SYSTEM (CAST IN PLACE) WHERE NEW SIDEWALKS TERMINATE INTO EXISTING STREETS AS NOTED.
8. ELEVATIONS SHOWN ARE MSL.
9. FIELD VERIFY ALL ELEVATIONS AND DRAINAGE SYSTEM PLACEMENT PRIOR TO START OF WORK.

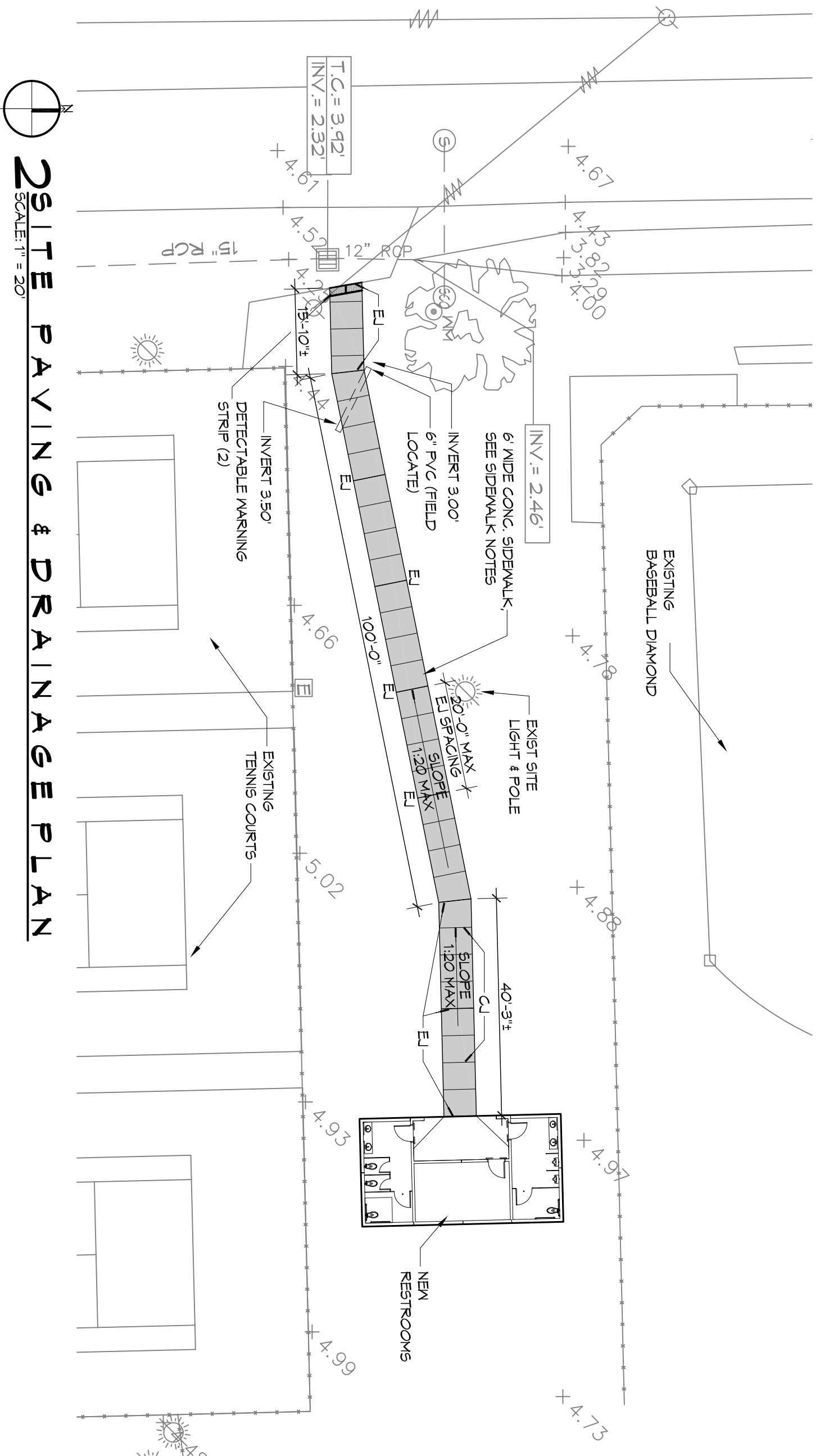


**PLAN**

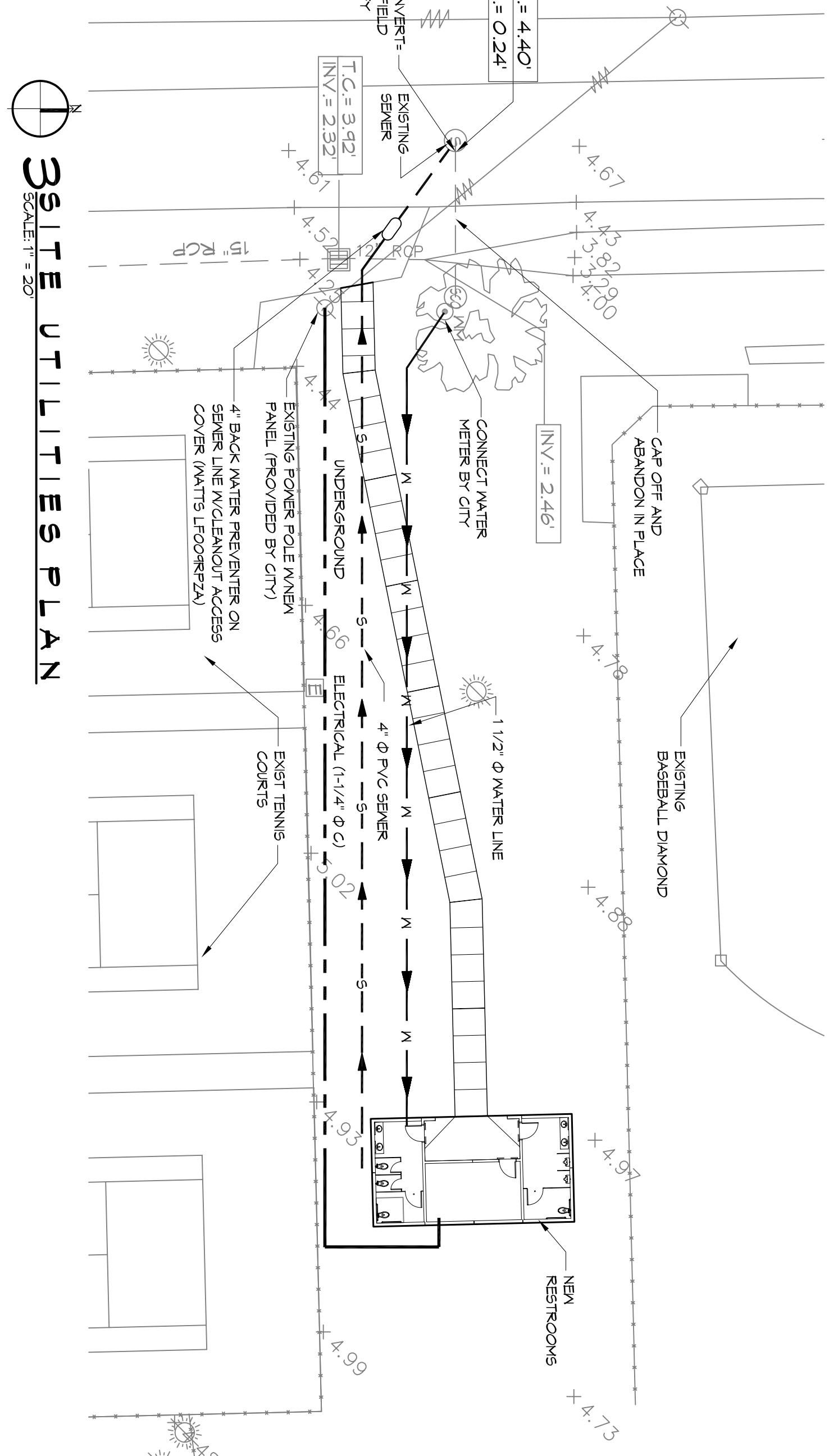


**DETAIL**

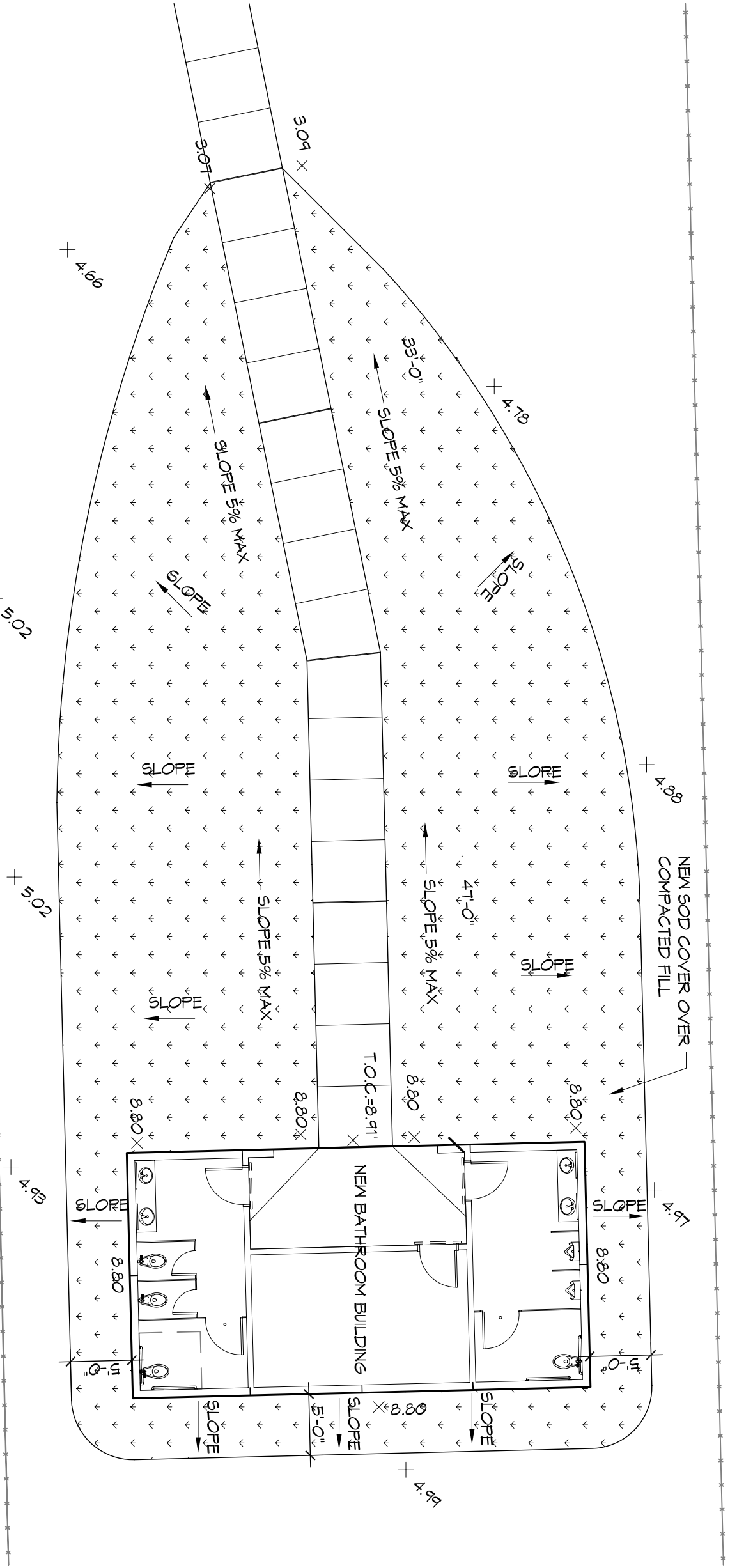
SCALE: 1/4" = 1'-0"



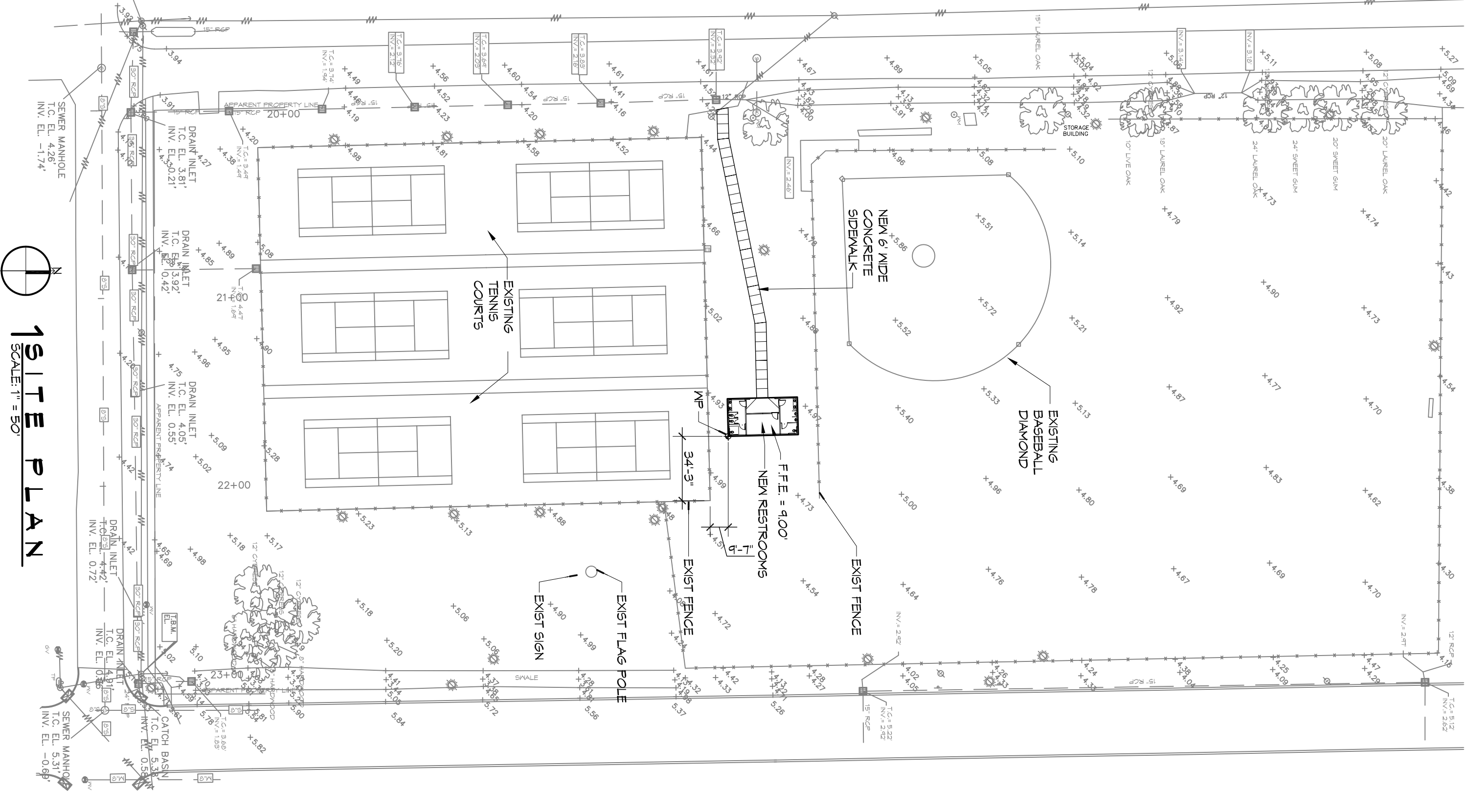
**2 SITE PAVING & DRAINAGE PLAN**  
SCALE: 1" = 20'



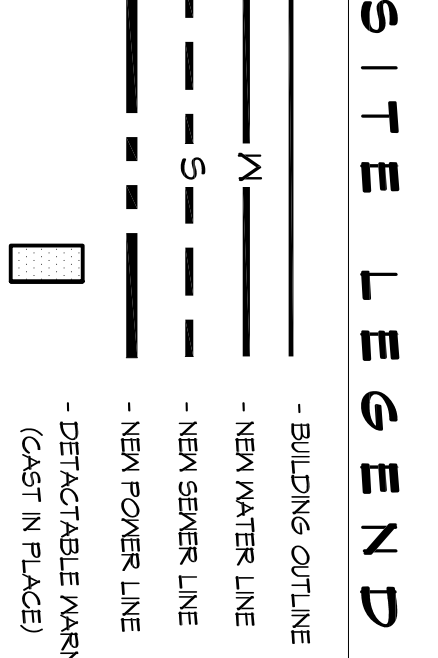
**3 SITE UTILITIES PLAN**  
SCALE: 1" = 20'



**4 LANDSCAPING PLAN**  
SCALE: 1" = 10'



**1 SITE PLAN**  
SCALE: 1" = 50'



- DRAINAGE NOTES:**
1. DRAIN PIPE & FITTINGS WITHIN PROPERTY LINE SHALL BE POLYVINYL CHLORIDE PLASTIC PIPE WITHING CLASS 100 C-900 P.V.C.
  2. ELEVATIONS SHOWN ARE MSL.
  3. FIELD VERIFY ALL ELEVATIONS AND DRAINAGE SYSTEM PLACEMENT PRIOR TO START OF WORK.

**DAMMON ENGINEERING, INC.**  
Architects & Engineers

Chief Architect: Kevin J. Kinchen, NCARB  
Chief Engineer: Brian Mistich, PE  
554 Old Spanish Trail  
Slidell, LA 70458

www.dammonengineering.com  
info@dammonengineering.com  
PH: 985.649.5832  
F: 985.641.5950

REVISIONS	DATE
# DESCRIPTION	

CITY OF SLIDELL  
**3RD STREET RESTROOMS/  
VETERANS PARK  
IMPROVEMENTS**  
SLIDELL, LOUISIANA

JOB NO: 2170 DATE: 4/2/2014  
DRAWN BY: KJK/JLT CHECKED BY: CKD

SHEET TITLE:  
SITE PLAN, SITE UTILITIES  
PLAN, SITE DRAINAGE &  
PAVING PLAN AND SITE  
LANDSCAPING PLAN

DRAWING NUMBER:  
**61**

SHEET NO.: 4 OF 6