

CONCRETE MIX DESIGN

MIX FOR ONE CUBIC YARD OF FIBER-REINFORCED CONCRETE

28 DAY STRENGTH	4000 PSI
CEMENT (ASTM C-150, TYPE III)	4.64 SACKS (436 LB.)
FLY ASH (ASTM C-618)	1.16 SACKS (109 LB.)
GRAVEL (ASTM C-33, GRADE A)	1.775 LB.
SAND (ASTM C-33)	1.226 LB.
WATER (POTABLE)	30 GALLONS (250 LB.)
TYPE A WATER REDUCER (ASTM C-494)	16.35 LB.
AIR ENTRAINMENT	5% BY VOLUME, USE PER MANUFACTURERS SPECIFICATIONS
FIBER REINFORCEMENT	1.5 LBS./CY MICROFIBERS, AS SPECIFIED BELOW

FIBER REINFORCEMENT FOR ALL CONCRETE SIDEWALKS AND DRIVEWAYS SHALL BE MATRIX MONOFILAMENT MICROFIBER AS MANUFACTURED BY FRC INDUSTRIES OR APPROVED EQUAL, APPLIED THROUGHOUT THE CONCRETE MIXTURE. ALTERNATE PRODUCTS MUST BE PREAPPROVED BY THE CITY ENGINEER IN WRITING. CELLULOSE TREATED OR UNTREATED, AR GLASS, NYLON AND POLYESTER FIBERS ARE SPECIFICALLY PROHIBITED FROM USE.

CONTRACTOR SHALL FURNISH ALL MATERIALS, LABOR, AND EQUIPMENT NEEDED TO CONSTRUCT HANDICAP RAMPS, AT INTERSECTIONS, MEDIANS, OR AS DIRECTED BY THE CITY ENGINEER. THE CONCRETE USED TO CONSTRUCT THE RAMPS SHALL BE SIX (6) INCH THICK 4000-PSI AT 28 DAYS, WHERE NECESSARY OR AS DIRECTED BY THE CITY ENGINEER. EXISTING SIDEWALK SHALL BE REMOVED AND REPLACED WITH NEW PORTLAND CEMENT CONCRETE SIDEWALK AND TRUNCATED DOME TILE, AS STIPULATED ACCORDING TO AMERICAN DISABILITY ACT REQUIREMENT.

TRUNCATED DOME TILE SHALL BE MINIMUM 1/4-INCH THICK WITH EMBEDDED TRUNCATED DOMES, 3-INCHES ON CENTER THROUGH ENTIRE LENGTH OF TILE. TILE SURFACE SHALL BE COVERED WITH PROTECTIVE PLASTIC SHEETING. EACH HANDICAP RAMP SHALL CONSIST OF ONLY ONE TILE, WHICH SHALL BE ANCHORED INTO THE CONCRETE. THESE ARE A NO DIRECT PAY ITEM.

NOTES:

- 1) SIDEWALKS SHALL BE LOCATED AS NOTED. FIELD VERIFY WITH CITY ENGINEERING AND DAMMON ENGINEERING PRIOR TO FORMING. SCALING DIMENSION TO PRELIMINARY LOCATE SIDEWALKS IS PERMITTED.
- 2) ALL SIDEWALKS SHALL BE CONSTRUCTED OF PORTLAND CEMENT CONCRETE AND HAVE A MINIMUM THICKNESS OF 4".
- 3) SAND BASE COURSE (TYP.) SHALL HAVE A MINIMUM OF 6" THICK COMPACTED TO 95 % STANDARD PROCTOR.
- 3) PROVIDE SYNTHETIC FIBER REINFORING IN ACCORDANCE WITH ASTM C 1116 IN ALL CONCRETE SIDEWALKS.
- 4) ALL SIDEWALKS SHALL BE SCORED TO A DEPTH OF 3/4" AT FIVE FOOT INTERVALS.
- 5) ALL SIDEWALKS SHALL BE SLOPED TO THE ADJACENT STREET OR DRIVEWAY.
- 6) PROVIDE DETECTABLE WARNING SYSTEM (CAST IN PLACE) WHERE NEW SIDEWALKS TERMINATE INTO EXISTING STREETS AS NOTED.
- 7) DRAIN PIPE SHALL BE 1.5" REINFORCED CONCRETE PIPE OF BELL AND SPIGOT TYPE WITH "O" RING RUBBER GASKETS. THE BELLS OF THE PIPES SHALL BE LAID UPSTREAM. ALL JOINTS SHALL BE WRAPPED WITH GEOTEXTILE FABRIC. ALL PIPES SHALL REQUIRE A 3" COMPACTED SAND OR LIMSTONE BASE.
- 8) ELEVATIONS SHOWN ARE M.S.L.
- 9) FIELD VERIFY ALL ELEVATIONS AND DRAINAGE SYSTEM PLACEMENT PRIOR TO START OF WORK.

DROP INLET NOTES:

FRAME SHALL BE VULCAN FOUNDRY, DENHAM SPRINGS, LOUISIANA, DEMS FOUNDRY, HATTIESBURG, MISSISSIPPI, OR APPROVED EQUAL. FRAME AND COVER SHALL WEIGH NOT LESS THAN THREE HUNDRED TWENTY (320) POUNDS FOR STANDARD TYPE. CASTINGS FOR MANHOLE FRAMES, COVERS, AND ALL OTHER IRON CASTINGS REQUIRED SHALL BE OF TOUGH GRAY IRON FROM INJURIOUS DEFECTS. THE ANNULAR BEARING PLANES SHALL BE GROUND OR MACHINED SO THEY WILL NOT ROCK OR RATTLE WHEN CROSSED BY TRAFFIC.

ALLOWANCE SHALL BE MADE IN THE PATTERNS SO THAT THE THICKNESS REQUIRED WILL NOT BE REDUCED BY GRINDING OR MACHINING. COVERS SHALL FIT THE FRAME ACCURATELY IN ANY POSITION. DRAINAGE MANHOLE COVER SHALL HAVE THE WORD "DRAINS TO LAKE" IMPRINTED ON TOP.

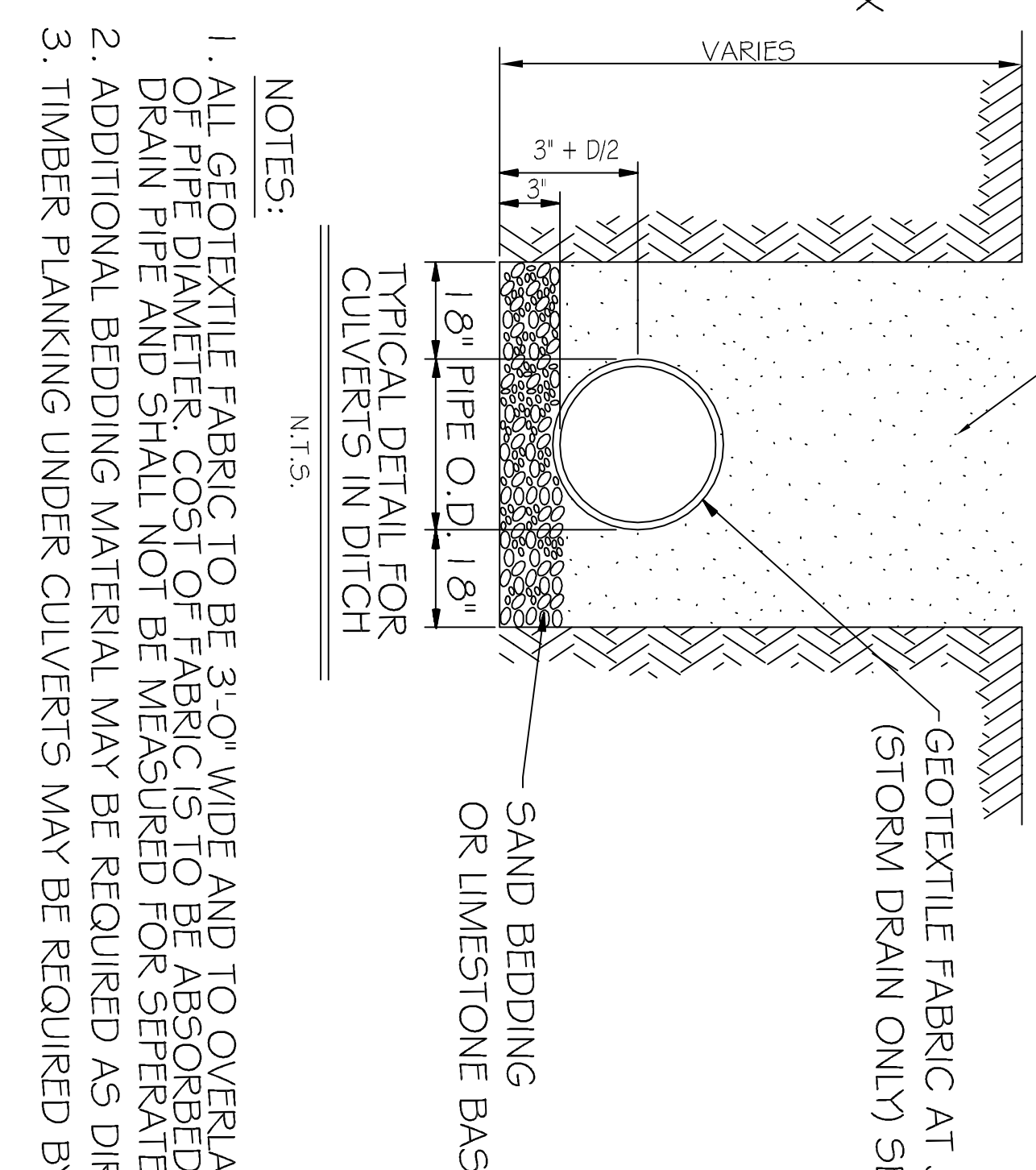
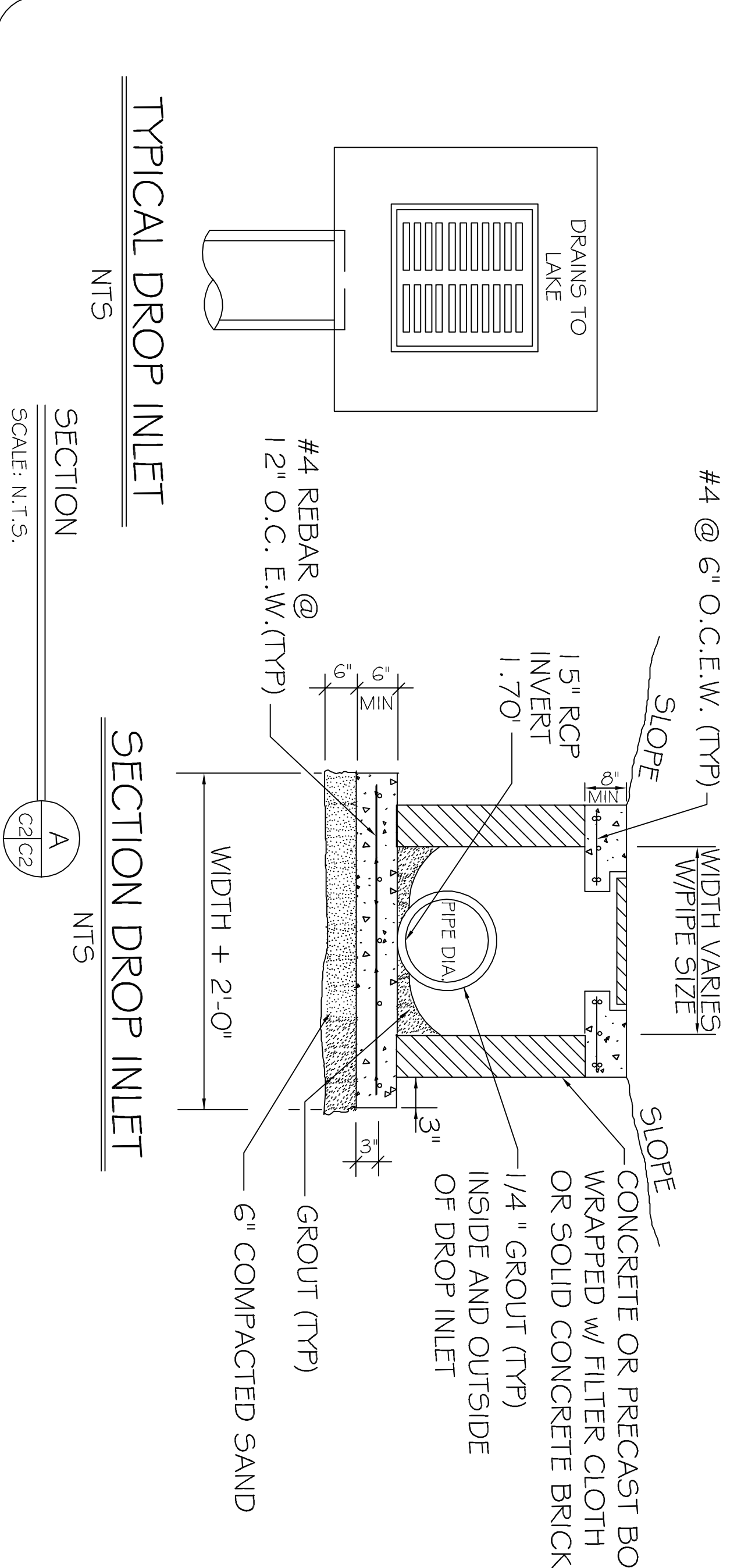
INSIDE AND OUTSIDE OF CATCH BASIN SHALL BE SEALED WITH GROUT. AFTER GROUTING, STRUCTURE SHALL BE COMPLETELY WRAPPED WITH FILTER CLOTH AROUND ALL WALLS. THE FILTER CLOTH SHALL BE FASTENED TO PREVENT MOVEMENT DURING BACKFILLING. FILTER CLOTH FABRIC SHALL BE AN APPROVED GEOTEXTILE FILTER FABRIC CAPABLE OF RETAINING THE SOIL. THE FILTER SHALL BE MINAMI 700 X 4 OZ. OR AN APPROVED EQUAL (EXCEPT ON NON-GASKETED JOINTS, WHICH SHALL BE 8 OZ.).

LEGEND

- # 0.00 - NEW ELEVATION
- # 0.00 - EXISTING TOPO
- # 0.00 - DETECTABLE WARNING SYSTEM (CAST IN PLACE)
- # 0.00 - NEW 4" SIDEWALK
- # 0.00 - NEW DROP INLET
- # 0.00 - NEW 1.5" RCP

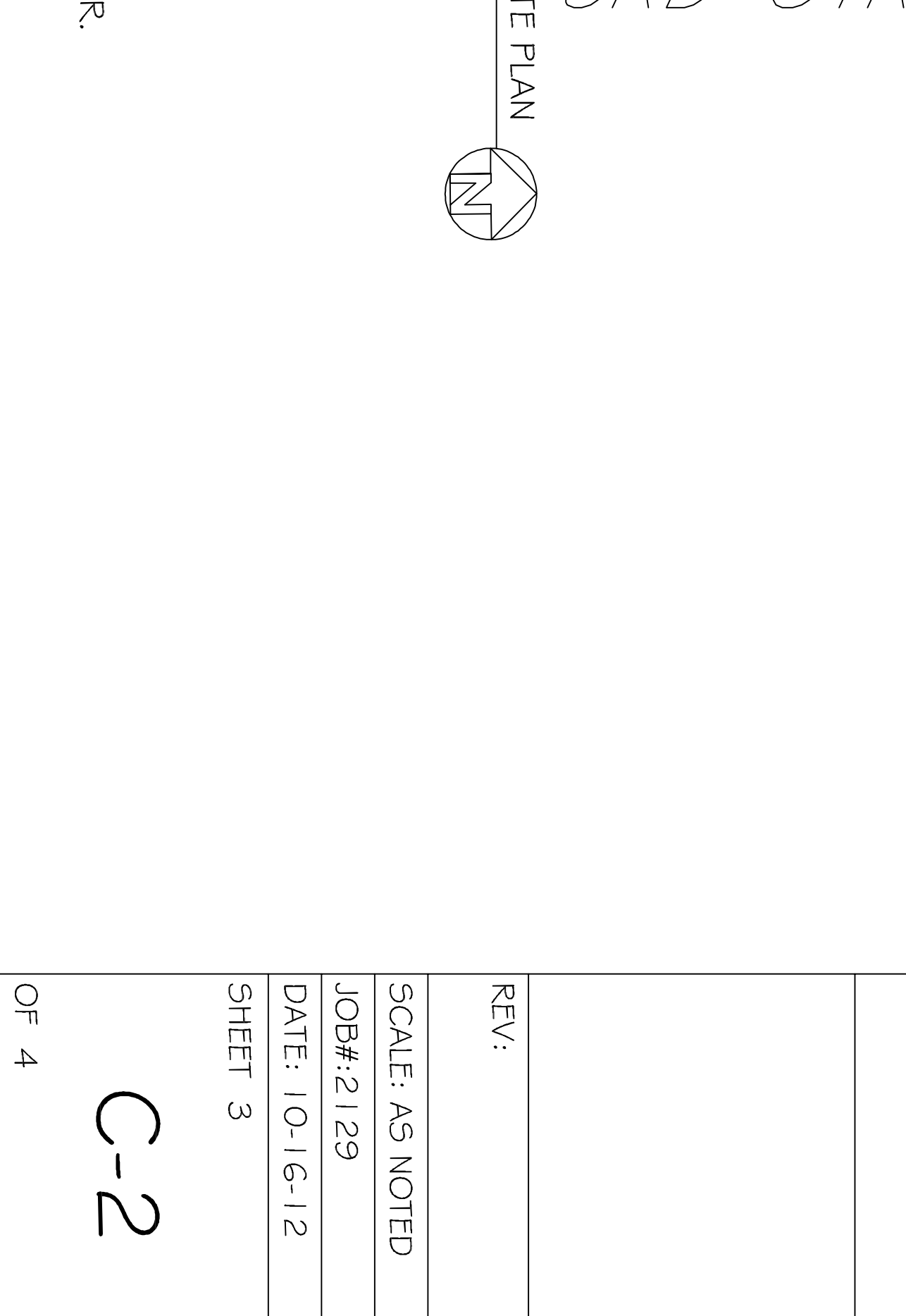
TRAFFIC CONTROLS:

ANY WORK WITHIN THE ROADWAY OR ADJACENT TO THE ROADWAY CAUSING AN INTERFERENCE TO VEHICULAR TRAFFIC REQUIRES PRIOR APPROVAL FROM THE CITY OF SLIDELL, AND MUST CONFORM TO THE REQUIREMENTS SET FORTH BY THE MANUAL OF UNIFORM TRAFFIC CONTROL DEVICES. THE CONTRACTOR MUST FURNISH ALL NECESSARY TRAFFIC SIGNS AND/OR BARRICADES AND MAINTAIN THEM DURING CONSTRUCTION ACTIVITY.



NOTES:

1. ALL GEOTEXTILE FABRIC TO BE 3'-0" WIDE AND TO OVERLAP NO LESS THAN 1/2 OF PIPE DIAMETER. COST OF FABRIC IS TO BE ABSORBED IN THE UNIT PRICE OF DRAIN PIPE AND SHALL NOT BE MEASURED FOR SEPARATE PAYMENT.
2. ADDITIONAL BEDDING MATERIAL MAY BE REQUIRED AS DIRECTED BY THE ENGINEER.
3. TIMBER PLANKING UNDER CULVERTS MAY BE REQUIRED BY ENGINEER.



DAMMON ENGINEERING, INC.

CHIEF ENGINEER
EMMETT DAMMON, P.E.

CHIEF ARCHITECT
ROBERT WILTSE

554 OLD SPANISH TRAIL
SLIDELL, LA, 70458
OFFICE: 985-649-5532
FAX: 985-641-5950

WWW.DAMMONENGINEERING.COM
EMAIL: DAMMONENG@BELL SOUTH.NET

CITY OF SLIDELL LOUISIANA

CDBG SIDEWALK IMPROVEMENTS FY11

CLEVELAND AVE.

REV: _____

SCALE: AS NOTED

JOB#: 2129

DATE: 10-16-12

SHEET 3

OF 4

C-2