



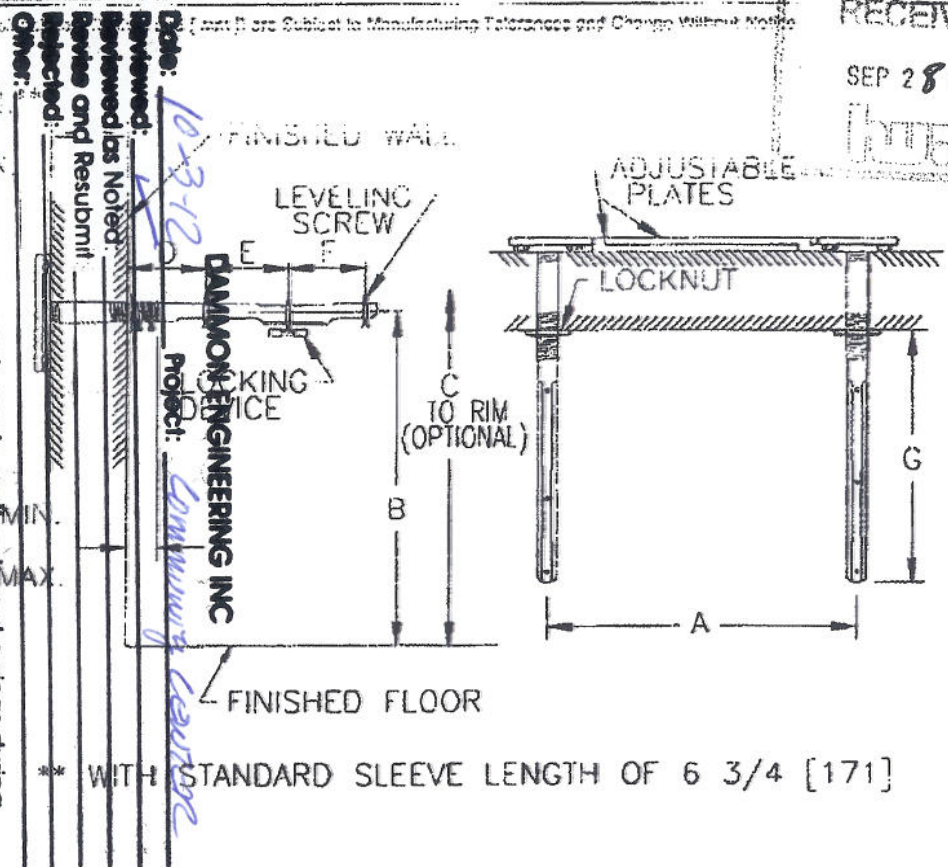
**Z1254**  
**ADJUSTABLE CONCEALED ARM SYSTEM**  
**WALL SUPPORTED**

SPECIFICATION SHEET

TAG \_\_\_\_\_



(Notes) are Subject to Manufacturing Tolerances and Change Without Notice



Corrections or comments made on the shop drawings during this review do not relieve the contractor from compliance with requirements of the drawings and specifications. This check is only for review of the general conformance with the design concept of the project and general compliance with the information given in the contract documents. This contractor is responsible for confirming and certifying all quantities and dimensions; selecting fabrication processes and techniques of construction; coordinating his or her work with that of all other trades and performing all in a safe and satisfactory manner.

Submittal Item: ADJUSTABLE CONCEALED ARM  
 Comments: APR 11 2012

**ENGINEERING SPECIFICATION: ZURN Z1254 Lavatory support with concealed arms. Complete with adjustable Dura-Coated support plates with arm sleeves, concealed arms, and mounting fasteners.**

Product No.	Approx. Wt. Lbs. [kg]
Z1254	18 [8]

OPTIONS (Check/specify appropriate options)

PREFIXES  
 \_\_\_ Z Dura-Coated System with Concealed Arms\*

SUFFIXES  
 \_\_\_ -E2 Concealed Arm Escutcheons 2 [51] Long  
 \_\_\_ -E4 Concealed Arm Escutcheons 4 [102] Long  
 \_\_\_ -E6 Concealed Arm Escutcheons 6 [152] Long  
 \_\_\_ -S1 Sleeve Length Over 6 3/4 [171] (Specify Length)  
 \_\_\_ -79 Paraplegic Rough-in

Note: Dimensional data for letter dimensions depends upon fixture type and manufacturer. See Zurn Carrier/Fixture Rough-In information at [www.zurn.com](http://www.zurn.com) for specific rough-in dimensions

REV. E	DATE: 12/1/10	C.N. NO. 120598
DWG. NO. 56859		PRODUCT NO. Z1254

\*REQ'D UNLESS OTHERWISE SPECIFIED