

DAMMON
ENGINEERING, INC.

CHIEF ENGINEER
DAMMON, P.E.
EMMETT
CHIEF ARCHITECT
ROBERT
WILTSE

1095 FLORIDA AVENUE
SLIDELL, LA. 70458
OFFICE: 985-649-5632
FAX: 985-641-5950

WEBSITE:
WWW.DAMMONENGINEERING.COM
EMAIL:
DAMMONENG@BLSOUTH.NET

ARCHITECTURE
ENGINEERING
STUDIES
PLANNING
INVESTIGATION
EXPERT WITNESS

WALL STUD
CALCULATION

BRAC - UPGRADE
F-15 CIRF
NAS LRB, NEW ORLEANS
FOR
BROADMOOR, LLC.

STUD WALL
DETAILS

REV:

SCALE AS NOTED

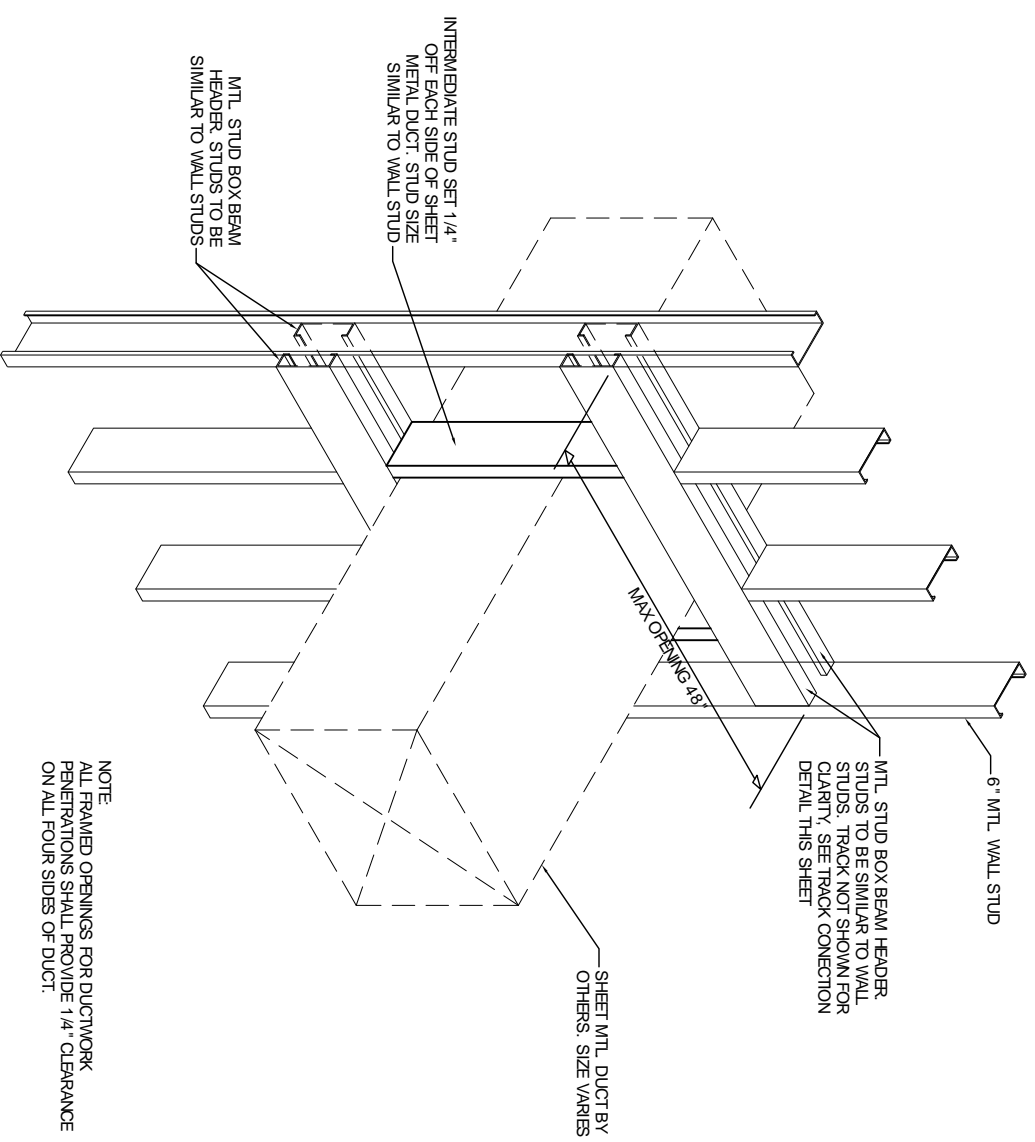
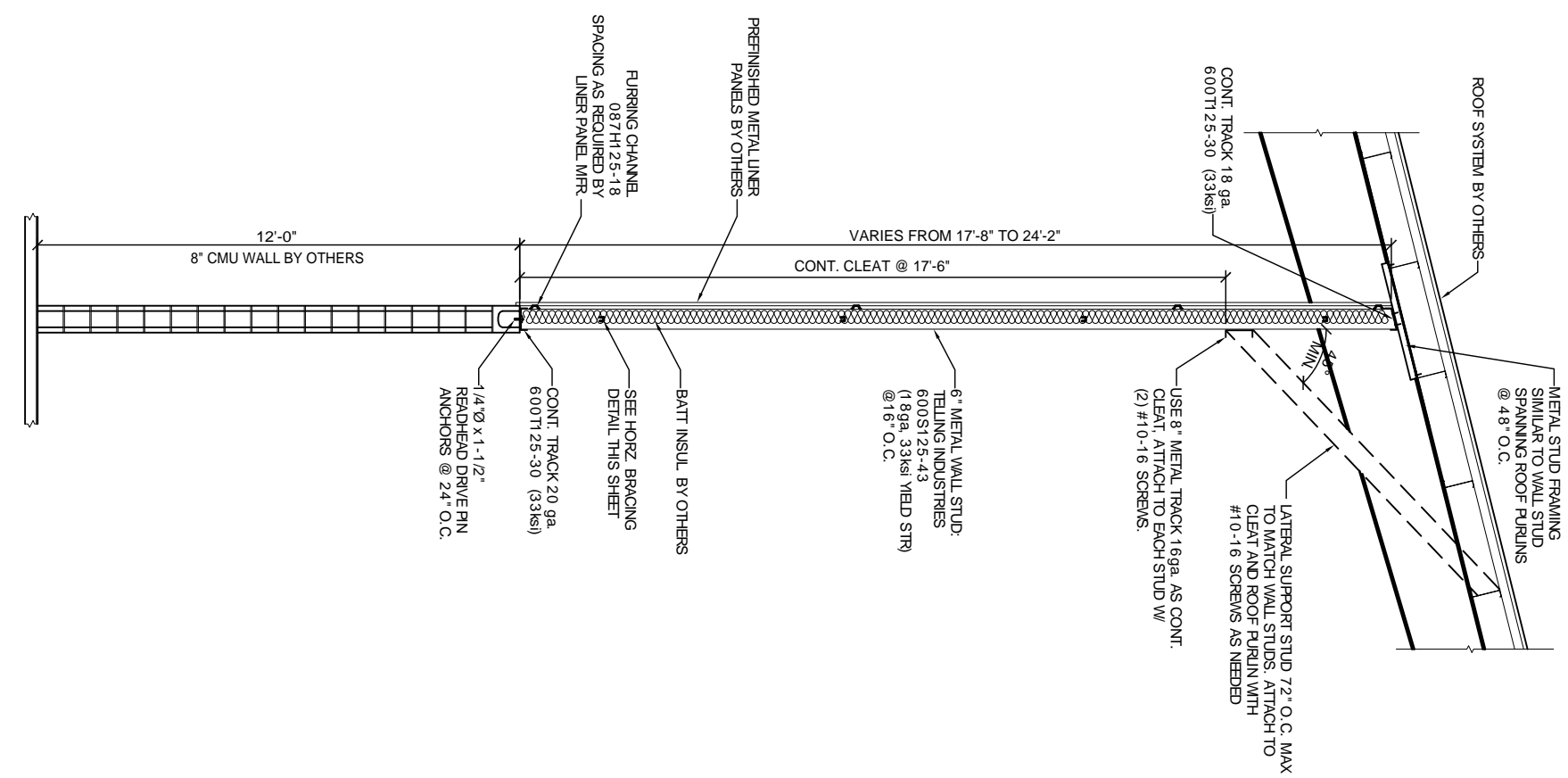
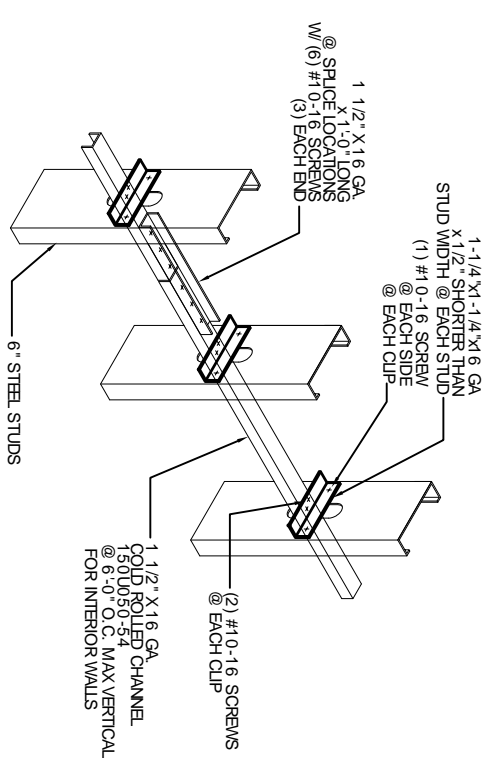
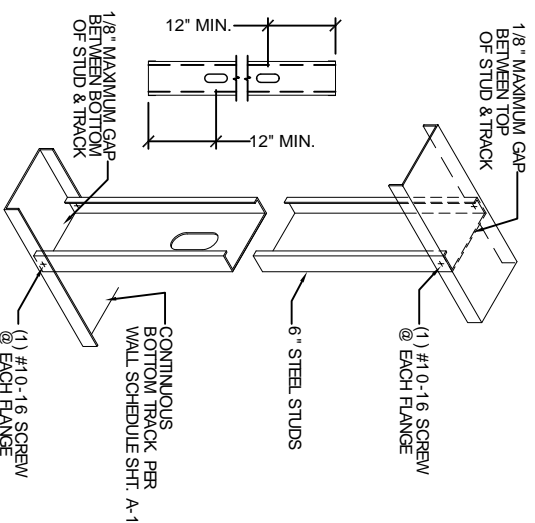
JOB#:

DATE: 06-22-10

SHEET 1

A-1

OF 1



NOTE:
ALL FRAMED OPENINGS FOR DUCTWORK PENETRATIONS SHALL PROVIDE 1/4" CLEARANCE ON ALL FOUR SIDES OF DUCT.