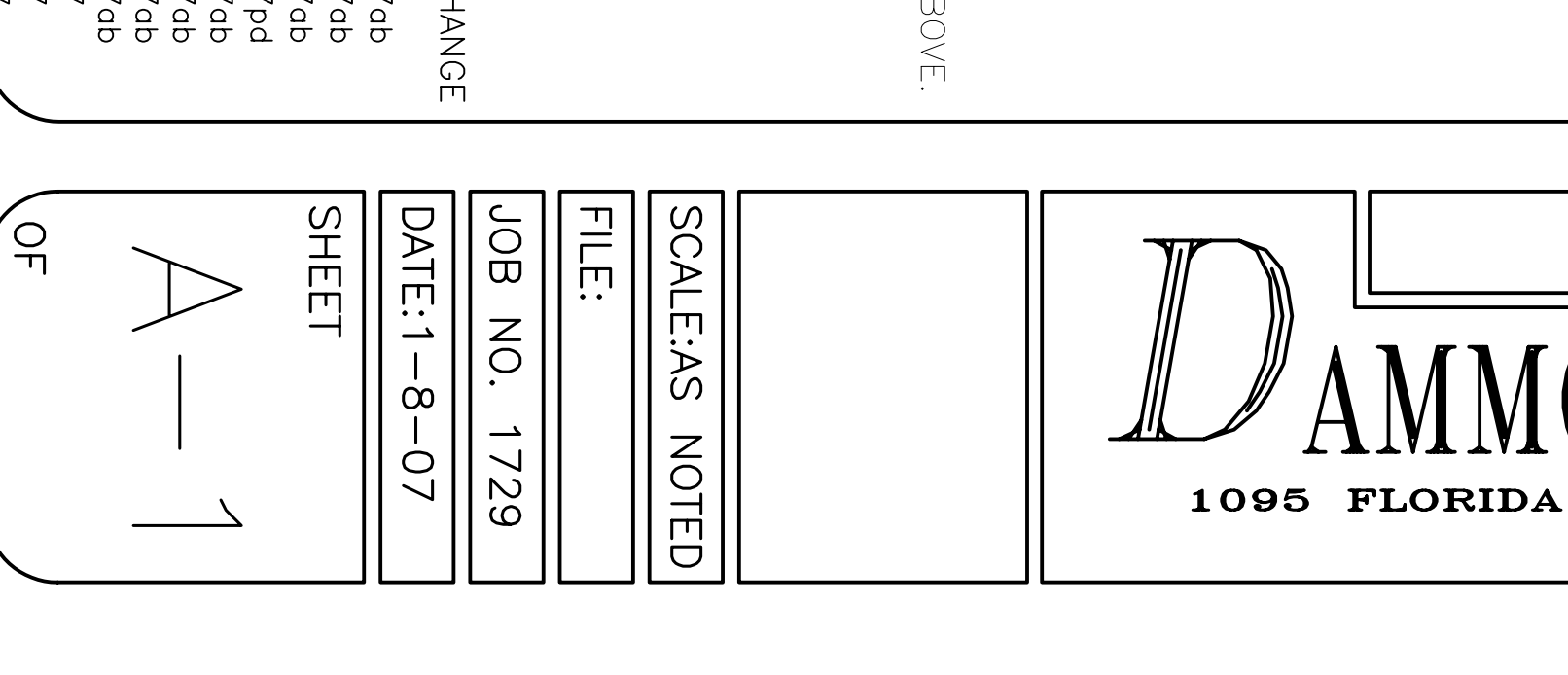
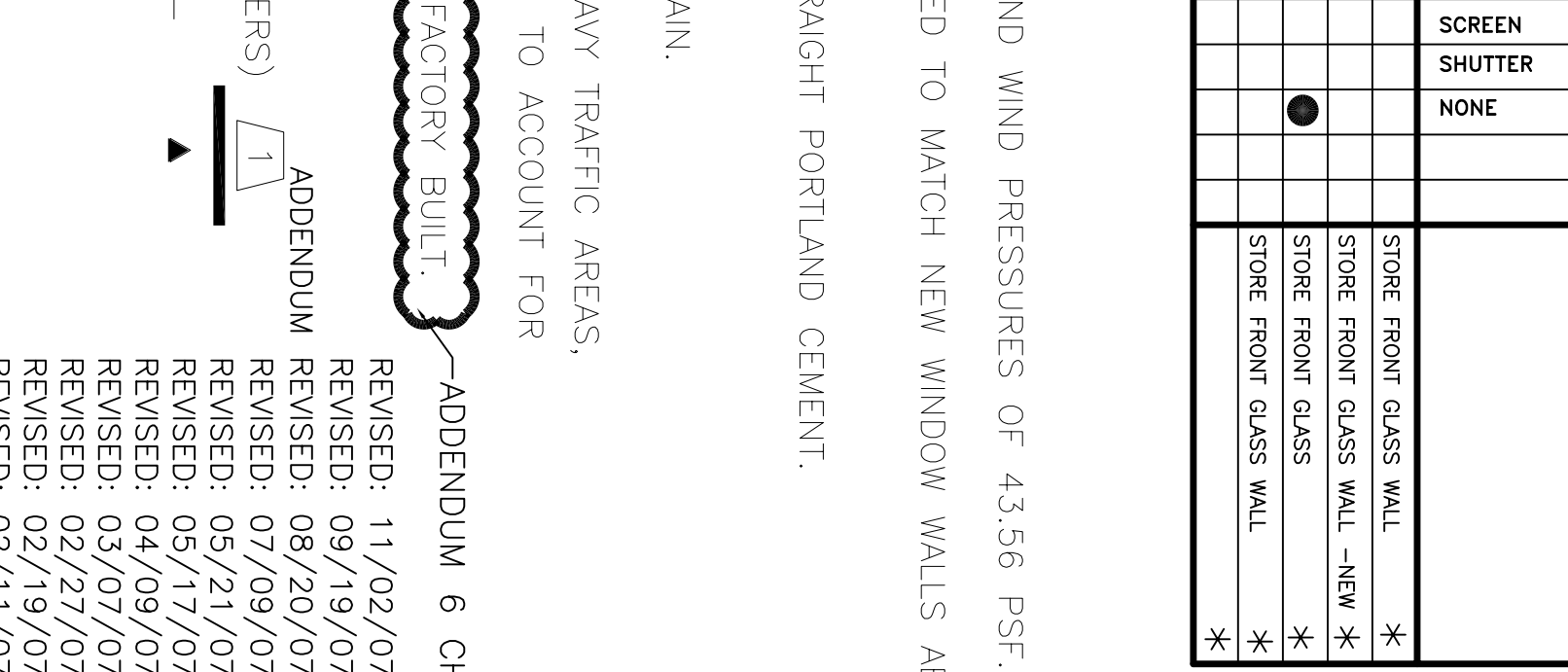
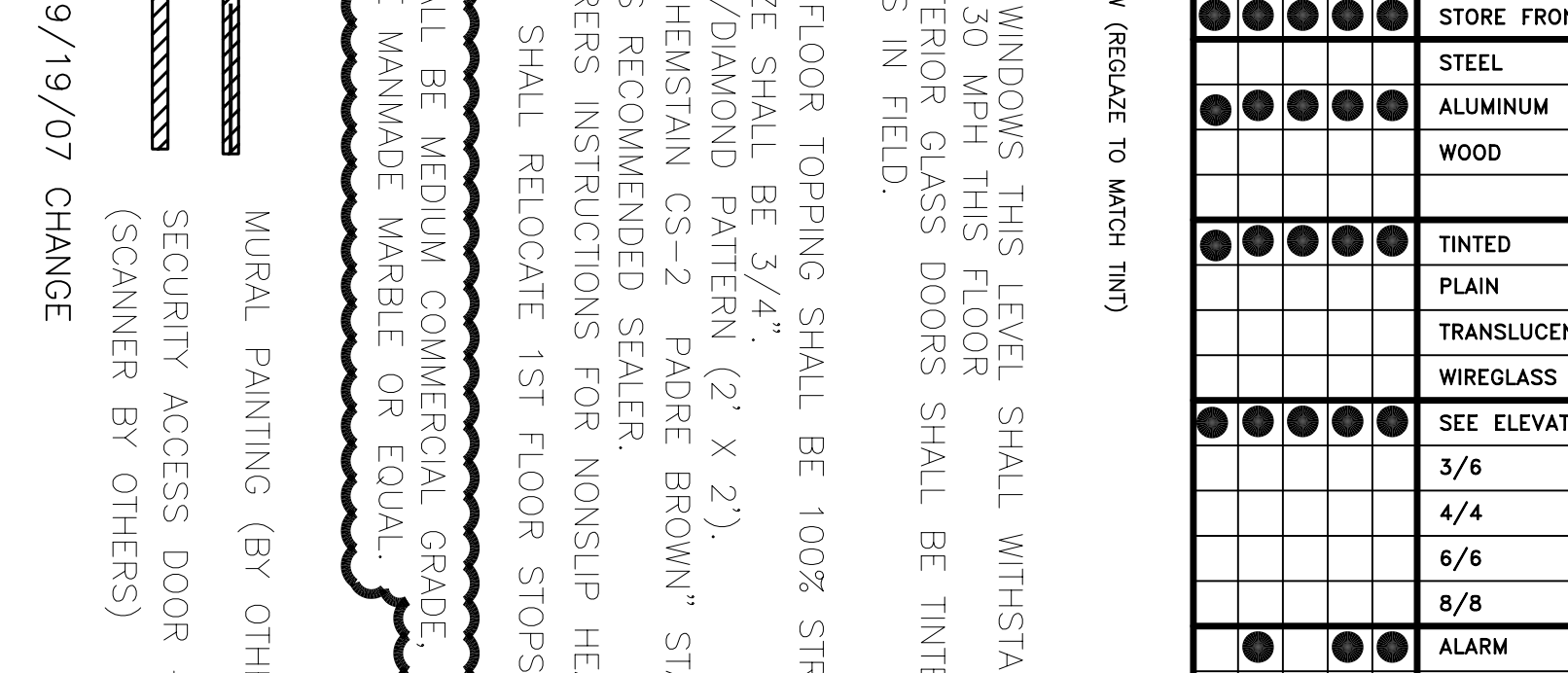
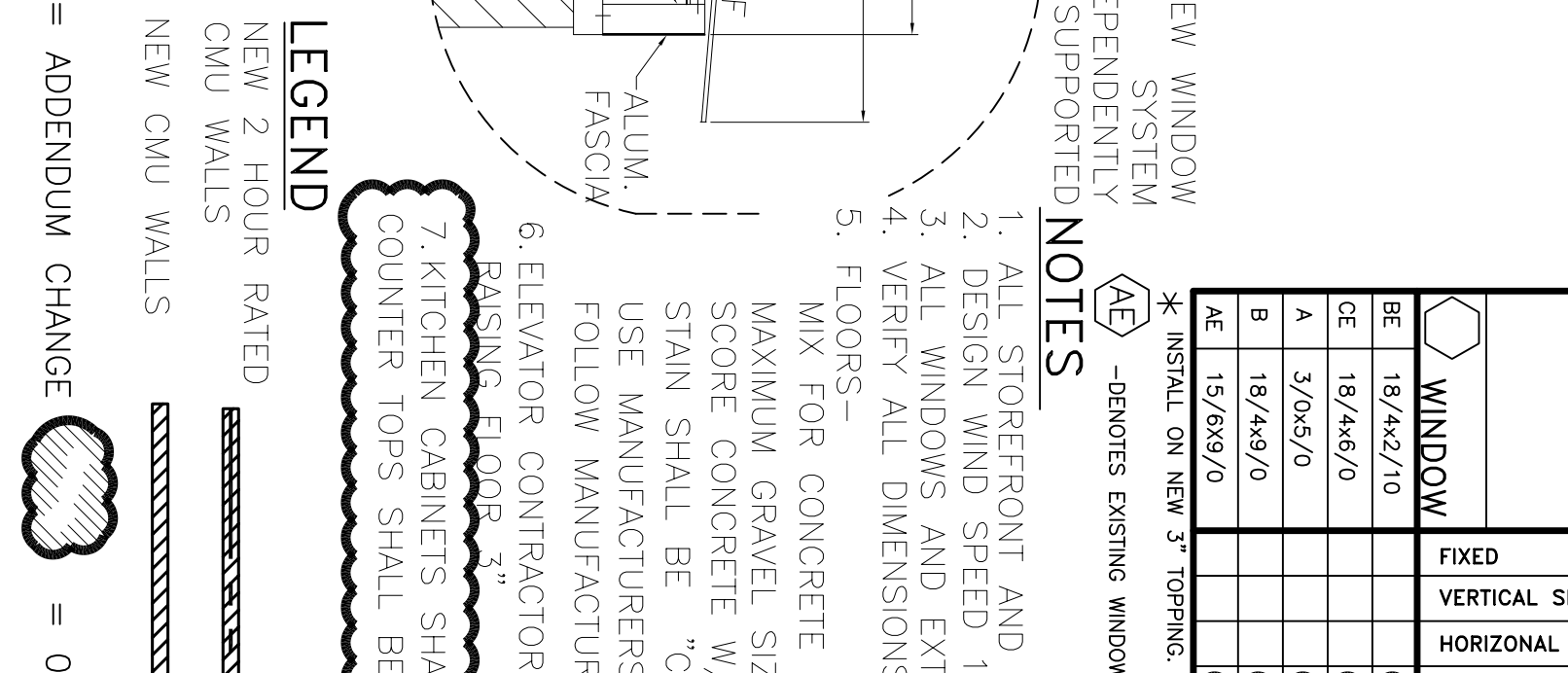
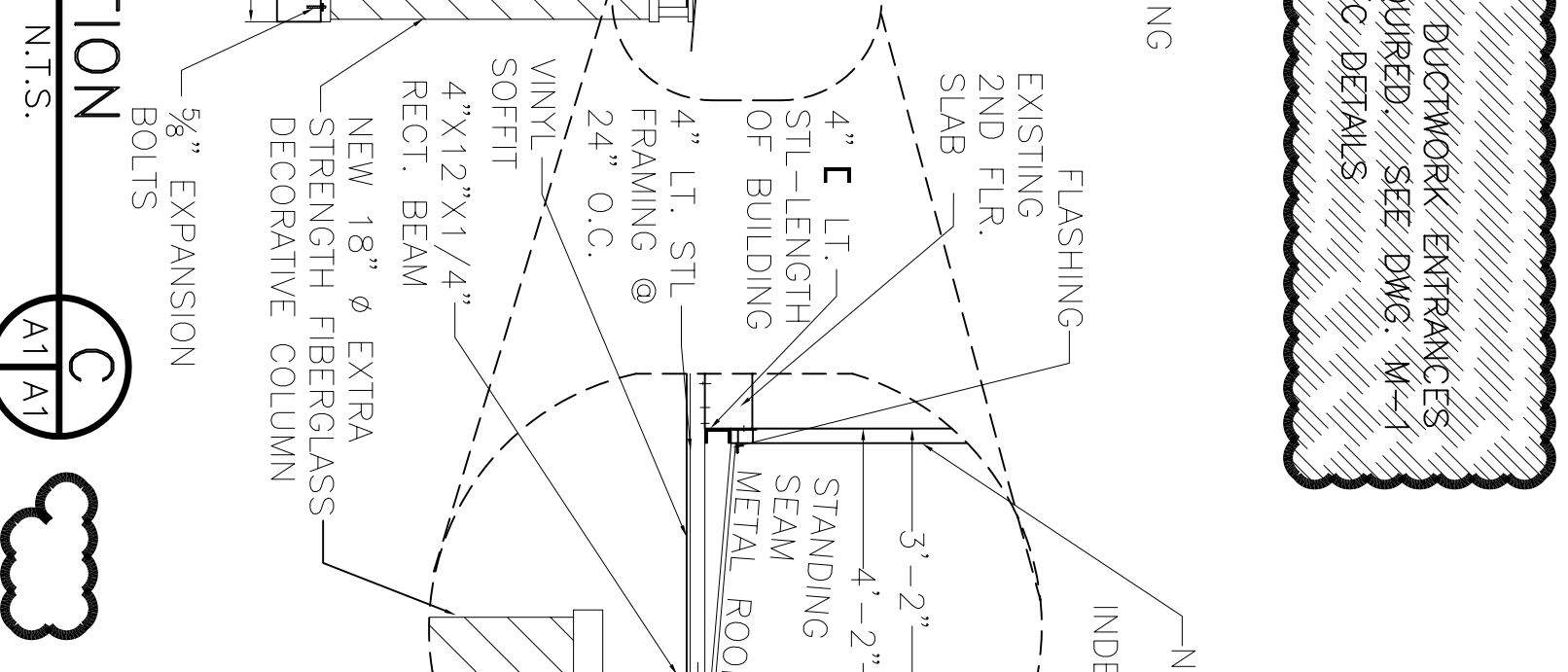
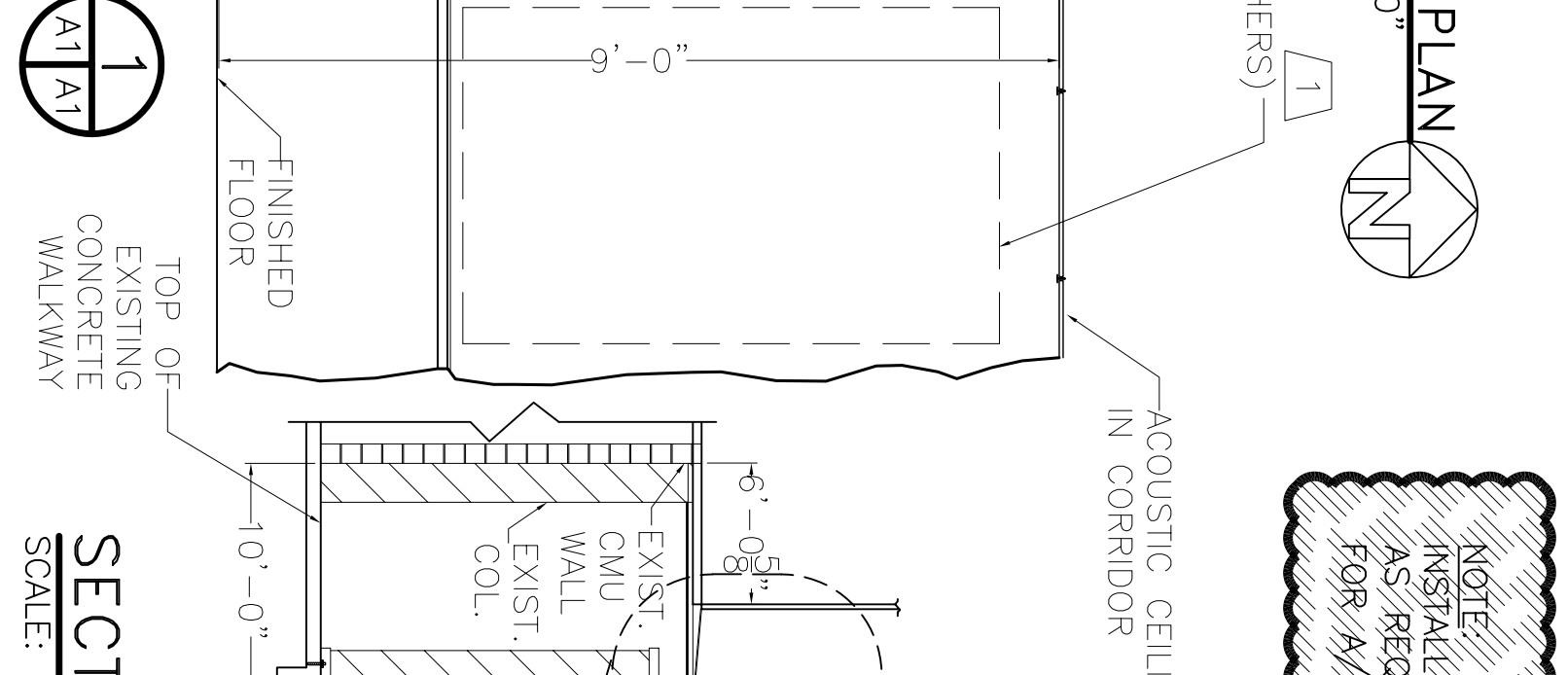
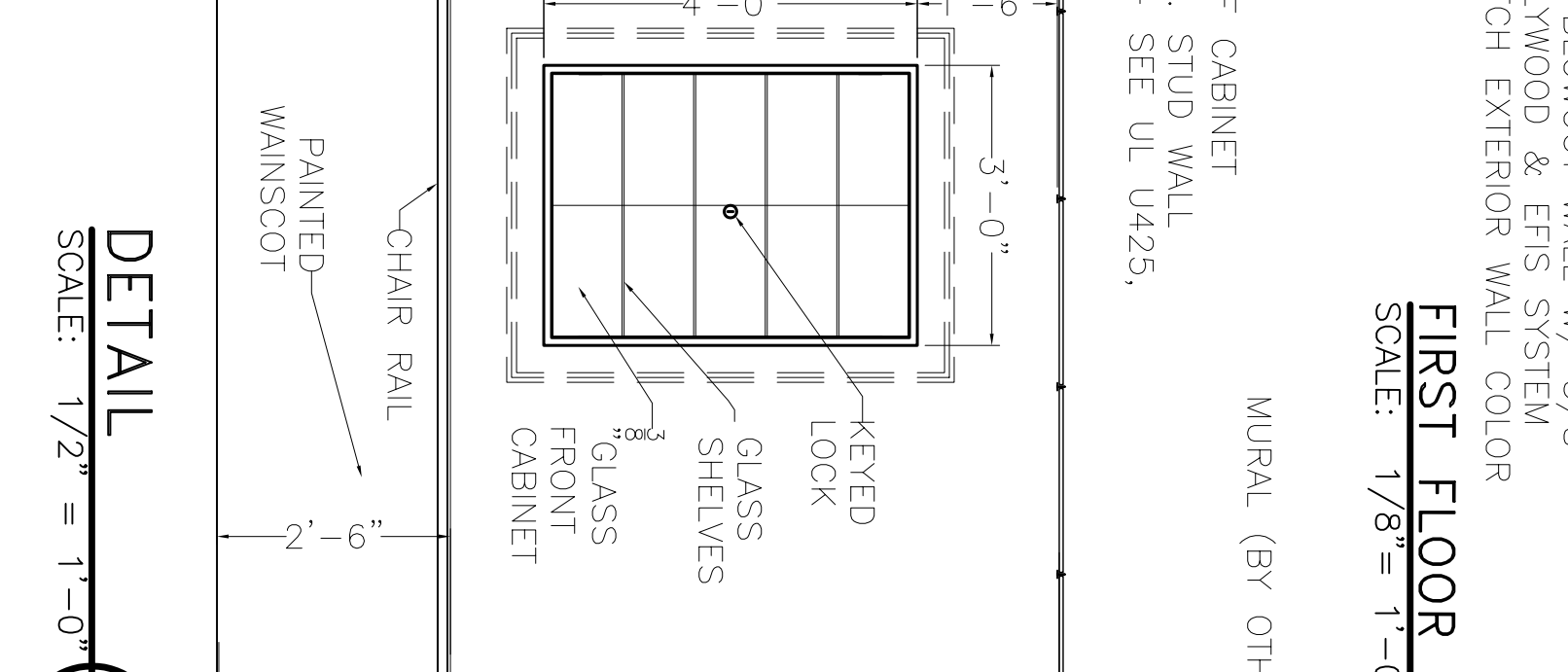
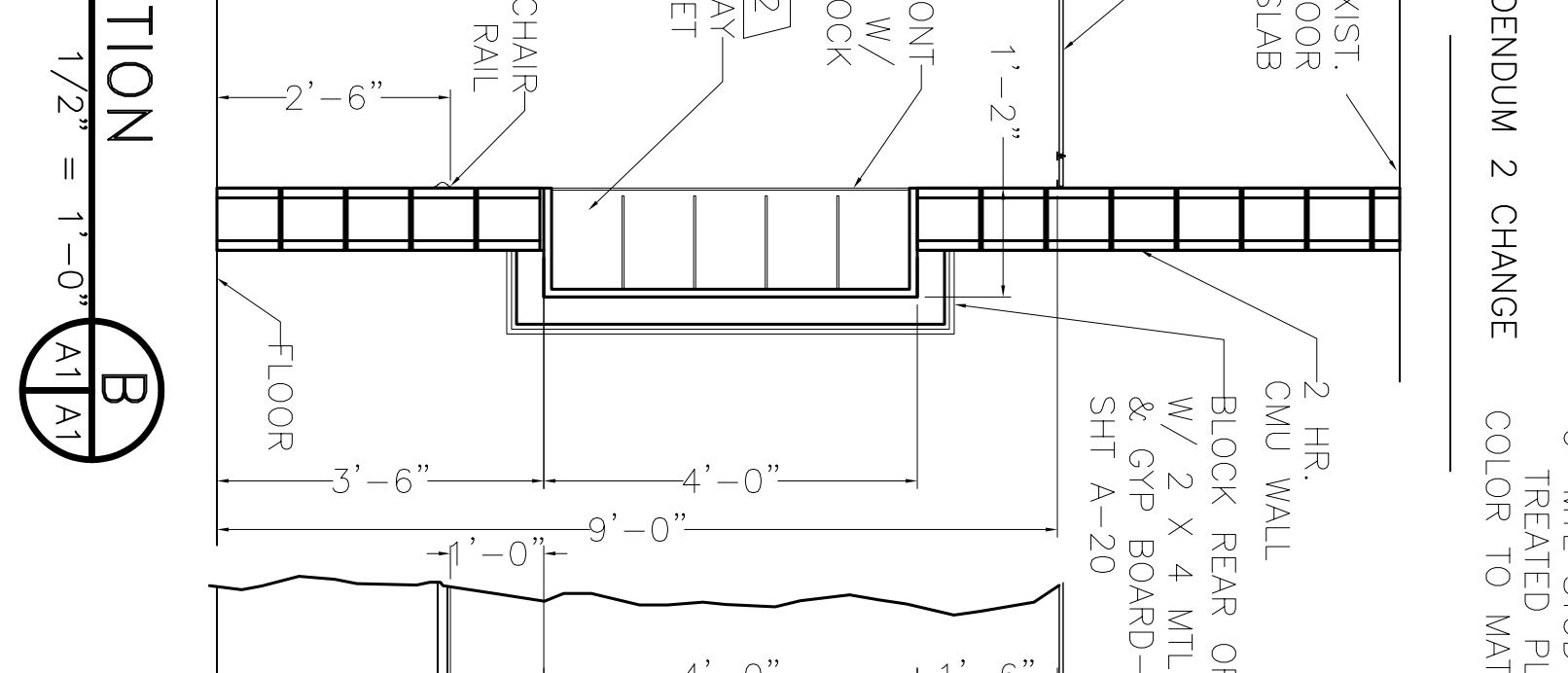
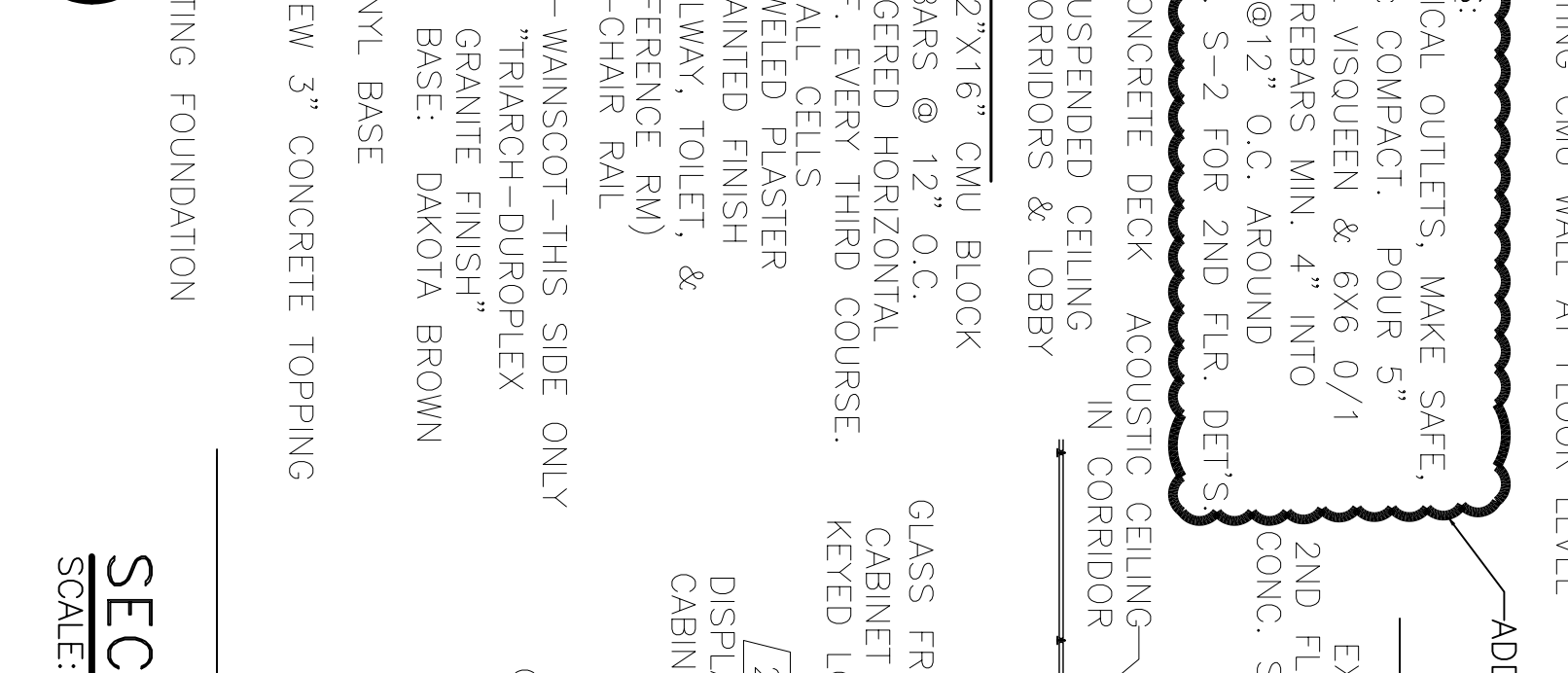
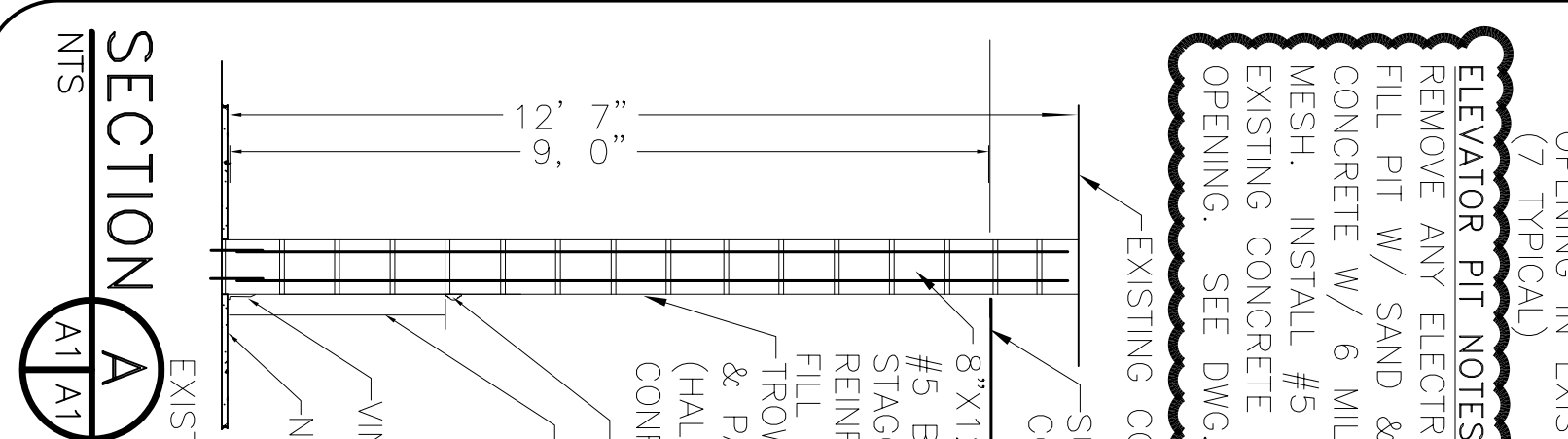
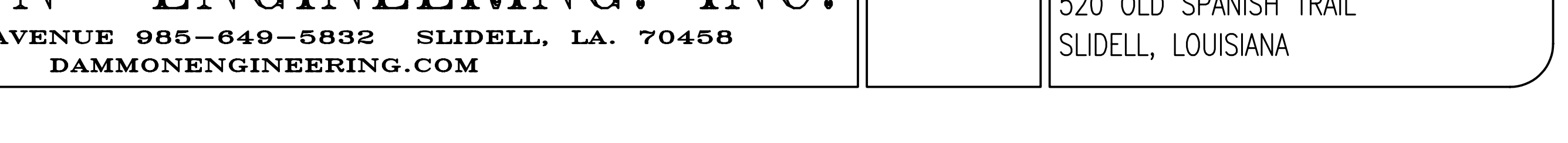
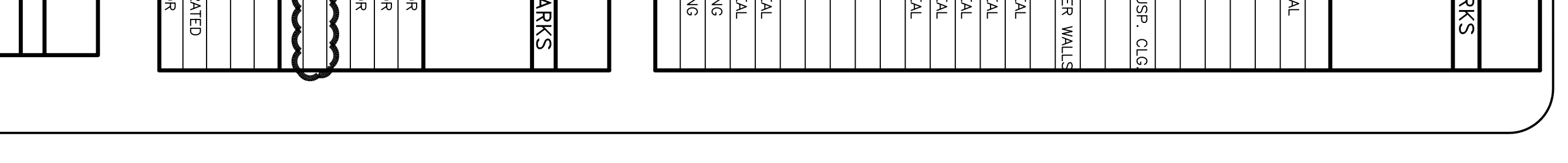
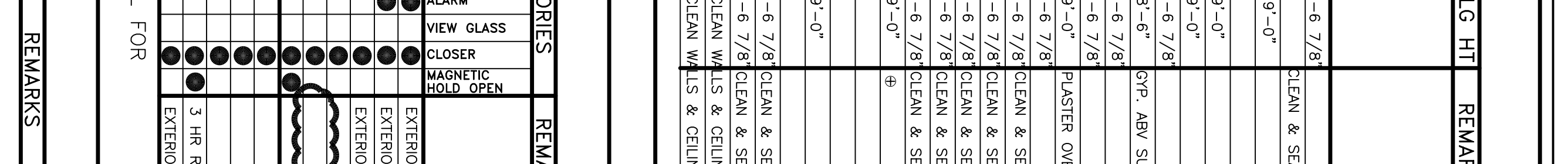
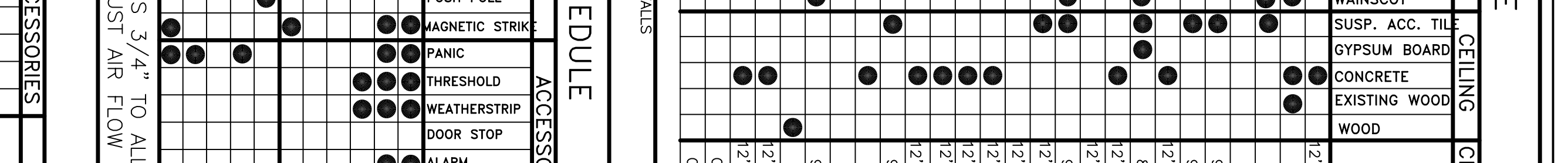
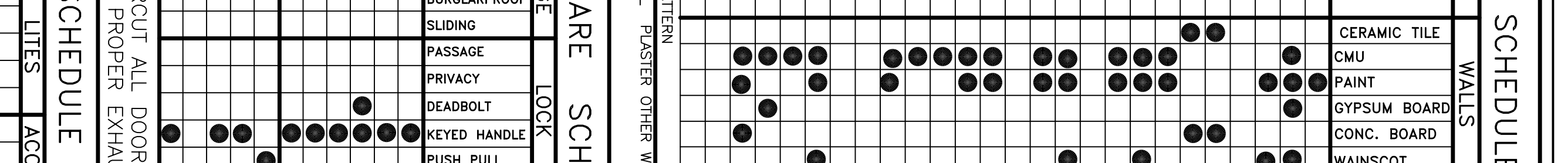
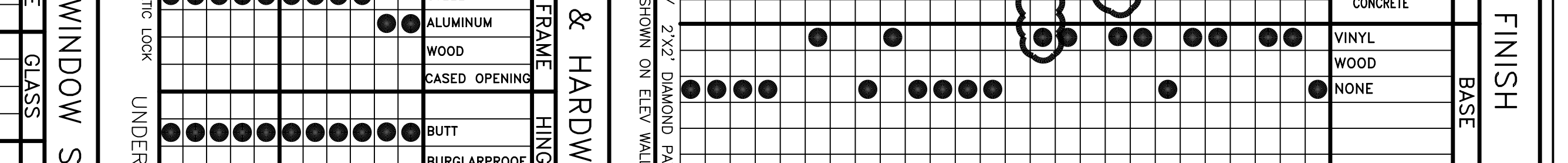
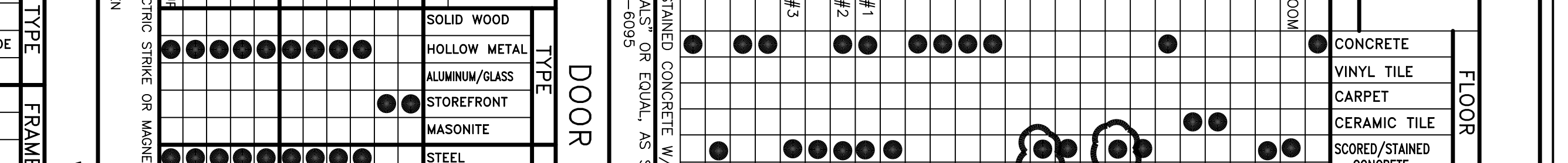
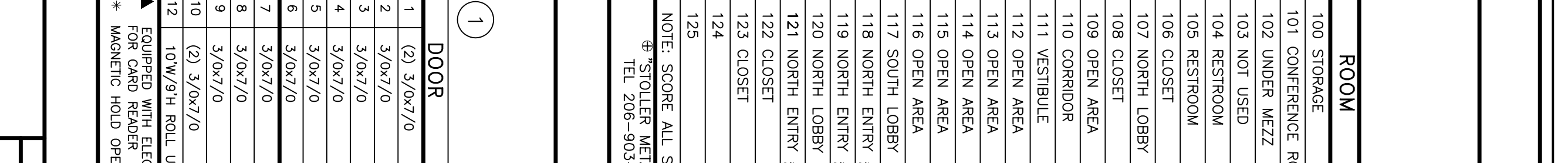
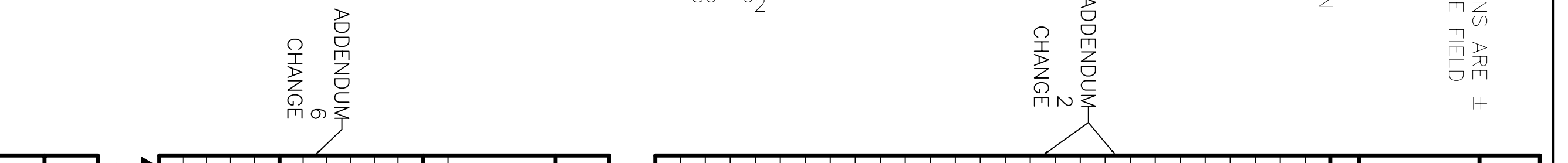


NOTE: ALL DIMENSIONS ARE ± AND SHALL BE FIELD VERIFIED.



**LEGEND**

- NEW 2 HOUR RATED CMU WALLS
- NEW CMU WALLS
- MURAL PAINTING (BY OTHERS)
- SECURITY ACCESS DOOR - (SCANNER BY OTHERS)
- ADDENDUM CHANGE
- CHANGE

**WINDOW SCHEDULE**

ID	TYPE	FRAME	GLASS	LITES	ACCESSORIES	REMARKS
1	DOOR	SOLID WOOD				
2	(2) 3/0x7/0	HOLLOW METAL				EXTERIOR
3	3/0x7/0	ALUMINUM/GLASS				EXTERIOR
4	3/0x7/0	STOREFRONT				EXTERIOR
5	3/0x7/0	MASONITE				EXTERIOR
6	3/0x7/0	STEEL				EXTERIOR
7	3/0x7/0	WOOD				EXTERIOR
8	3/0x7/0	TINTED				EXTERIOR
9	3/0x7/0	PLAIN				EXTERIOR
10	(2) 3/0x7/0	TRANSLUCENT				EXTERIOR
11	(2) 3/0x7/0	WIREGLASS				EXTERIOR
12	12\"/>					

**DOOR & HARDWARE SCHEDULE**

ID	TYPE	FRAME	HINGE	LOCK	ACCESSORIES	REMARKS
1	DOOR	SOLID WOOD	BUTT	BURGLARPROOF		
2	(2) 3/0x7/0	HOLLOW METAL	SLIDING	PASSAGE		EXTERIOR
3	3/0x7/0	ALUMINUM/GLASS	PASSAGE	PRIVACY		EXTERIOR
4	3/0x7/0	STOREFRONT	DEADBOLT	KEYED HANDLE		EXTERIOR
5	3/0x7/0	MASONITE	PUSH PULL	MAGNETIC STRIK		EXTERIOR
6	3/0x7/0	STEEL	KEYED HANDLE	ALARM		EXTERIOR
7	3/0x7/0	WOOD	PUSH PULL	SCREEN		EXTERIOR
8	3/0x7/0	TINTED	MAGNETIC STRIK	SHUTTER		EXTERIOR
9	3/0x7/0	PLAIN	ALARM	NONE		EXTERIOR
10	(2) 3/0x7/0	TRANSLUCENT	KEYED HANDLE			EXTERIOR
11	(2) 3/0x7/0	WIREGLASS	PUSH PULL			EXTERIOR
12	12\"/>					

**FINISH SCHEDULE**

ROOM	FLOOR	BASE	WALLS	CEILING	CLG HT	REMARKS
100 STORAGE	CONCRETE	VINYL TILE	CERAMIC TILE	CONCRETE	12'-6 7/8"	CLEAN & SEAL
101 CONFERENCE ROOM	VINYL TILE	CARPET	CERAMIC TILE	CONCRETE	9'-0"	CLEAN & SEAL
102 UNDER MEZZ	CARPET	CERAMIC TILE	SCORED/STAINED CONCRETE	CONCRETE	9'-0"	CLEAN & SEAL
103 NOT USED	VINYL	WOOD	VINYL	WOOD	9'-0"	CLEAN & SEAL
104 RESTROOM	WOOD	NONE	CERAMIC TILE	CONCRETE	9'-0"	CLEAN & SEAL
105 RESTROOM	WOOD	NONE	CMU	CONCRETE	9'-0"	CLEAN & SEAL
106 CLOSET	WOOD	NONE	PAINT	CONCRETE	9'-0"	CLEAN & SEAL
107 NORTH LOBBY	WOOD	NONE	CONCRETE	CONCRETE	9'-0"	CLEAN & SEAL
108 CLOSET	WOOD	NONE	CONCRETE	CONCRETE	9'-0"	CLEAN & SEAL
109 OPEN AREA	WOOD	NONE	CONCRETE	CONCRETE	9'-0"	CLEAN & SEAL
110 CORRIDOR	WOOD	NONE	CONCRETE	CONCRETE	9'-0"	CLEAN & SEAL
111 VESTIBULE	WOOD	NONE	CONCRETE	CONCRETE	9'-0"	CLEAN & SEAL
112 OPEN AREA	WOOD	NONE	CONCRETE	CONCRETE	9'-0"	CLEAN & SEAL
113 OPEN AREA	WOOD	NONE	CONCRETE	CONCRETE	9'-0"	CLEAN & SEAL
114 OPEN AREA	WOOD	NONE	CONCRETE	CONCRETE	9'-0"	CLEAN & SEAL
115 OPEN AREA	WOOD	NONE	CONCRETE	CONCRETE	9'-0"	CLEAN & SEAL
116 OPEN AREA	WOOD	NONE	CONCRETE	CONCRETE	9'-0"	CLEAN & SEAL
117 SOUTH LOBBY	WOOD	NONE	CONCRETE	CONCRETE	9'-0"	CLEAN & SEAL
118 NORTH ENTRY #1	WOOD	NONE	CONCRETE	CONCRETE	9'-0"	CLEAN & SEAL
119 NORTH ENTRY #2	WOOD	NONE	CONCRETE	CONCRETE	9'-0"	CLEAN & SEAL
120 NORTH LOBBY	WOOD	NONE	CONCRETE	CONCRETE	9'-0"	CLEAN & SEAL
121 NORTH ENTRY #3	WOOD	NONE	CONCRETE	CONCRETE	9'-0"	CLEAN & SEAL
122 CLOSET	WOOD	NONE	CONCRETE	CONCRETE	9'-0"	CLEAN & SEAL
123 CLOSET	WOOD	NONE	CONCRETE	CONCRETE	9'-0"	CLEAN & SEAL
124	WOOD	NONE	CONCRETE	CONCRETE	9'-0"	CLEAN & SEAL
125	WOOD	NONE	CONCRETE	CONCRETE	9'-0"	CLEAN & SEAL

**NOTES**

- ALL STOREFRONT AND WINDOWS THIS LEVEL SHALL WITHSTAND WIND PRESSURES OF 43.56 PSF.
- DESIGN WIND SPEED 130 MPH THIS FLOOR
- ALL WINDOWS AND EXTERIOR GLASS DOORS SHALL BE TINTED TO MATCH NEW WINDOW WALLS ABOVE.
- VERIFY ALL DIMENSIONS IN FIELD.
- FLOORS - MIX FOR CONCRETE FLOOR TOPPING SHALL BE 100% STRAIGHT PORTLAND CEMENT. MAXIMUM GRAVEL SIZE SHALL BE 3/4". SCORE CONCRETE W/DIAMOND PATTERN (2' X 2'). STAIN SHALL BE 'CHEMSTAIN CS-2 PARE BROWN' STAIN. FOLLOW MANUFACTURERS RECOMMENDED SEALER.
- ELEVATOR CONTRACTOR SHALL RELOCATE 1ST FLOOR STOPS TO ACCOUNT FOR RAISING FLOOR.
- KITCHEN CABINETS SHALL BE MEDIUM COMMERCIAL GRADE FACTORY BUILT. COUNTER TOPS SHALL BE MANMADE MARBLE OR EQUAL.

**REVISIONS**

NO.	DATE	DESCRIPTION
1	02/11/07	REVISION: 02/11/07
2	02/27/07	REVISION: 02/27/07
3	03/07/07	REVISION: 03/07/07
4	04/09/07	REVISION: 04/09/07
5	05/21/07	REVISION: 05/21/07
6	07/09/07	REVISION: 07/09/07
7	08/20/07	REVISION: 08/20/07
8	09/19/07	REVISION: 09/19/07
9	11/02/07	REVISION: 11/02/07

**CONTRACT SET - 10/10/07**

RENOVATE OFFICE BUILDING

# DAMMON ENGINEERING, INC.

1095 FLORIDA AVENUE 985-649-5832 SLIDELL, LA. 70458  
DAMMONENGINEERING.COM

**1ST FLOOR RENOVATE PLAN**

ST. TAMMANY PARISH ADMIN. COMPLEX  
520 OLD SPANISH TRAIL  
SLIDELL, LOUISIANA

**SHEET**

A-1

DATE: 1-8-07

JOB NO. 1729

SCALE: AS NOTED