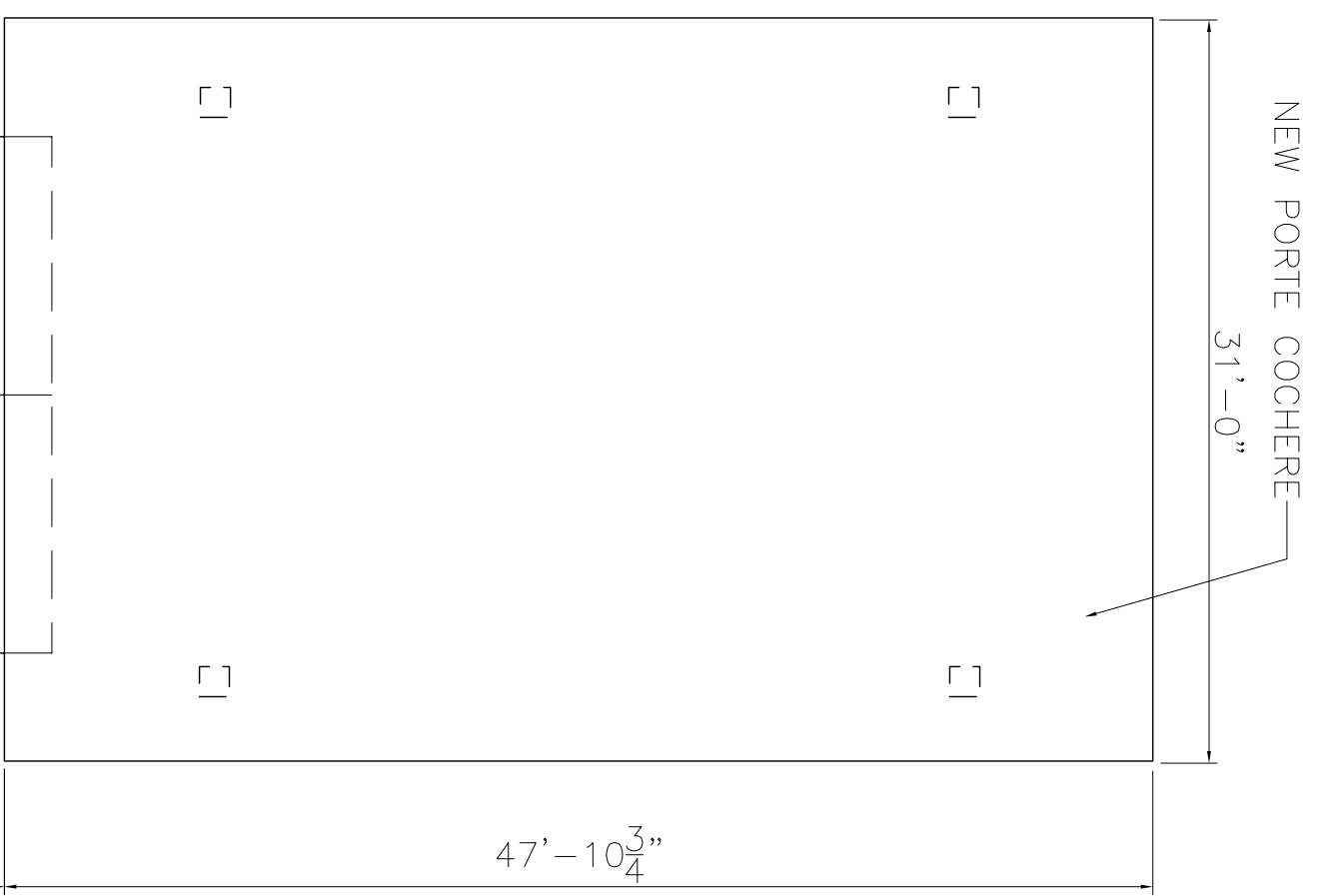
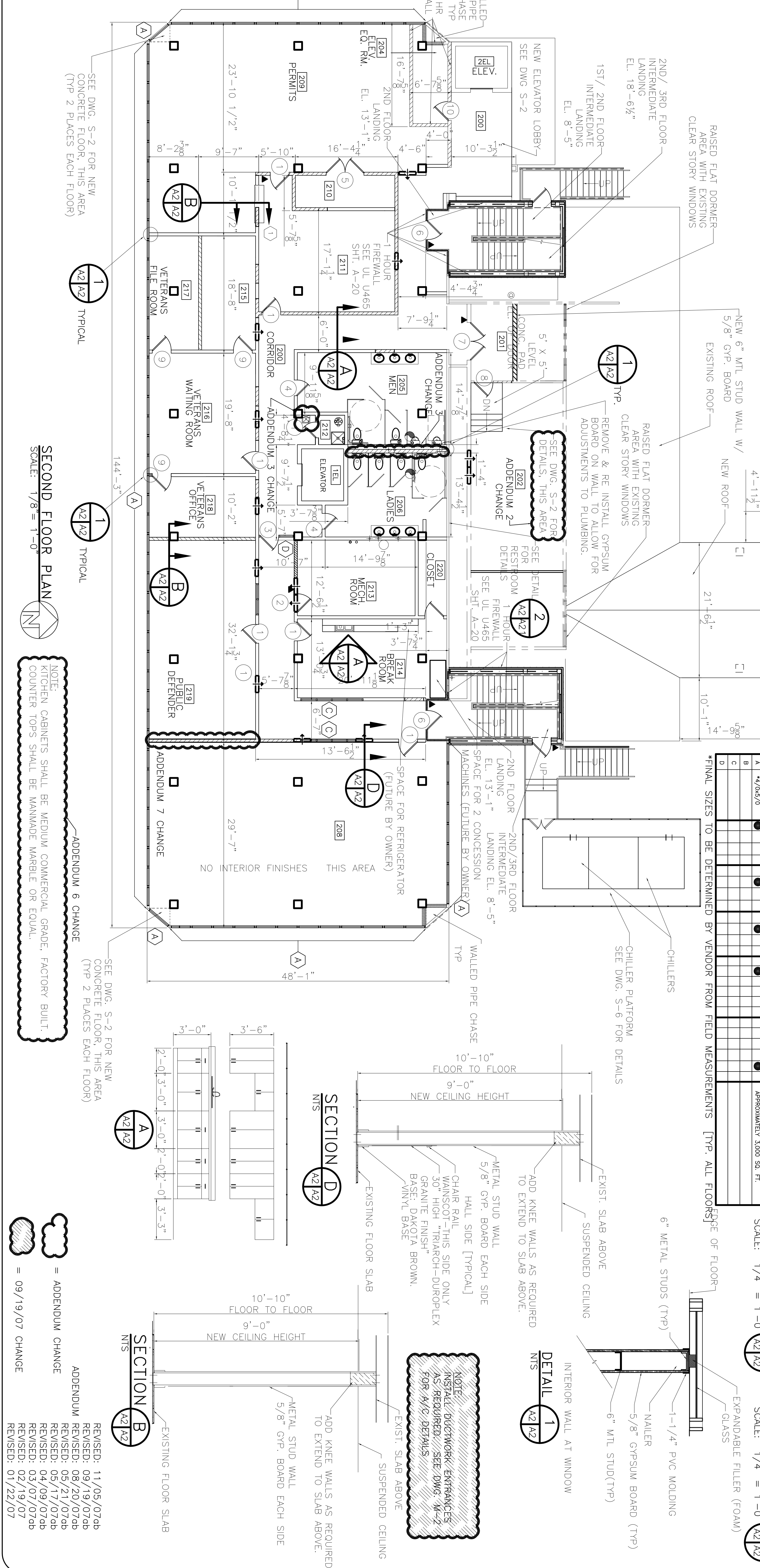
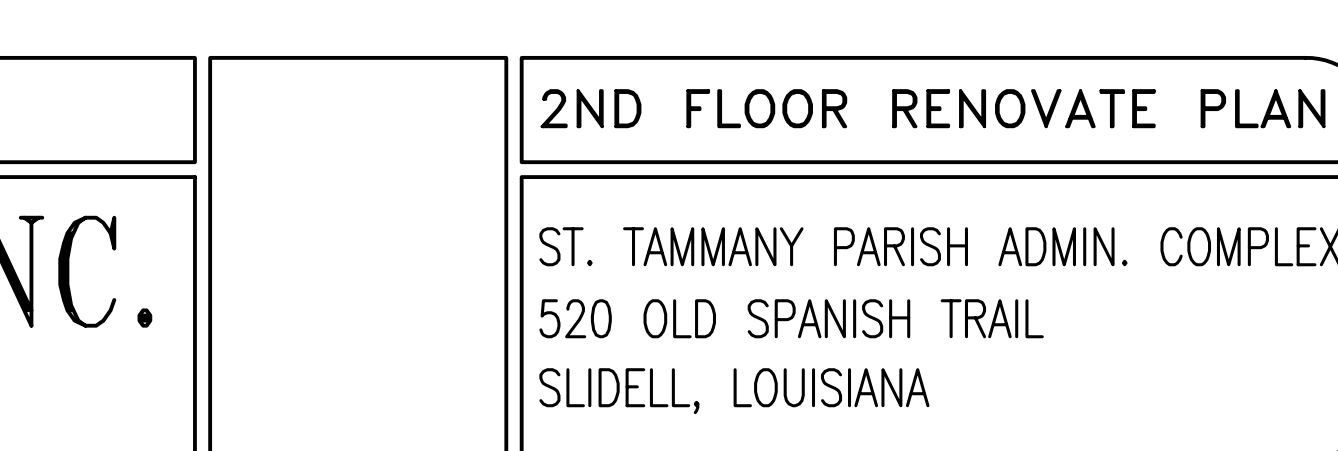


ROOM	FLOOR				BASE				WALLS				CEILING		FLG HT	REMARKS
	CONCRETE	VINYL TILE	CARPET	CERAMIC TILE	PAINTED WOOD	VINYL	WOOD	NONE	GYPSUM BOARD	GREENBOARD	CMU	PAINT	CERAMIC TILE	ACOUSTIC TILE		
200																
201																
202																
203																
204																
205																
206																
207																
208																
209																
210																
211																
212																
213																
214																
215																
216																
217																
218																



DOOR	TYPE	FRAME				HINGE	LOCK	ACCESSORIES				REMARKS	
		ALUM./GLASS	STEEL	MASONITE	STEEL			ALUMINUM	WOOD	PASSAGE	MAGNETIC		DEADBOLT
1	3/0x7/0												
2	3/0x7/0												
3	3/0x7/0												
4	3/0x7/0												
5	(2) 3/0x7/0												
6	3/0x7/0												
7	(2) 3/0x7/0												
8	3/0x7/0												
9	3/0x7/0												

WINDOW	TYPE	FRAME		GLASS	LITES	ACCESSORIES	REMARKS
		FIXED	VERTICAL SLIDE				
A	**4/0x5/0						APPROXIMATELY 3,000 SQ. FT.
B							
C							



RENOVATE OFFICE BUILDING

DAMMON ENGINEERING, INC.

1095 FLORIDA AVENUE 985-649-5832 SLIDELL, LA. 70458

DAMMONENGINEERING.COM

2ND FLOOR RENOVATE PLAN

ST. TAMMANY PARISH ADMIN. COMPLEX

520 OLD SPANISH TRAIL

SLIDELL, LOUISIANA

CONTRACT SET- 10/10/07

SHEET **A-2**

DATE: 1-9-07

JOB NO. 1729

SCALE: AS NOTED