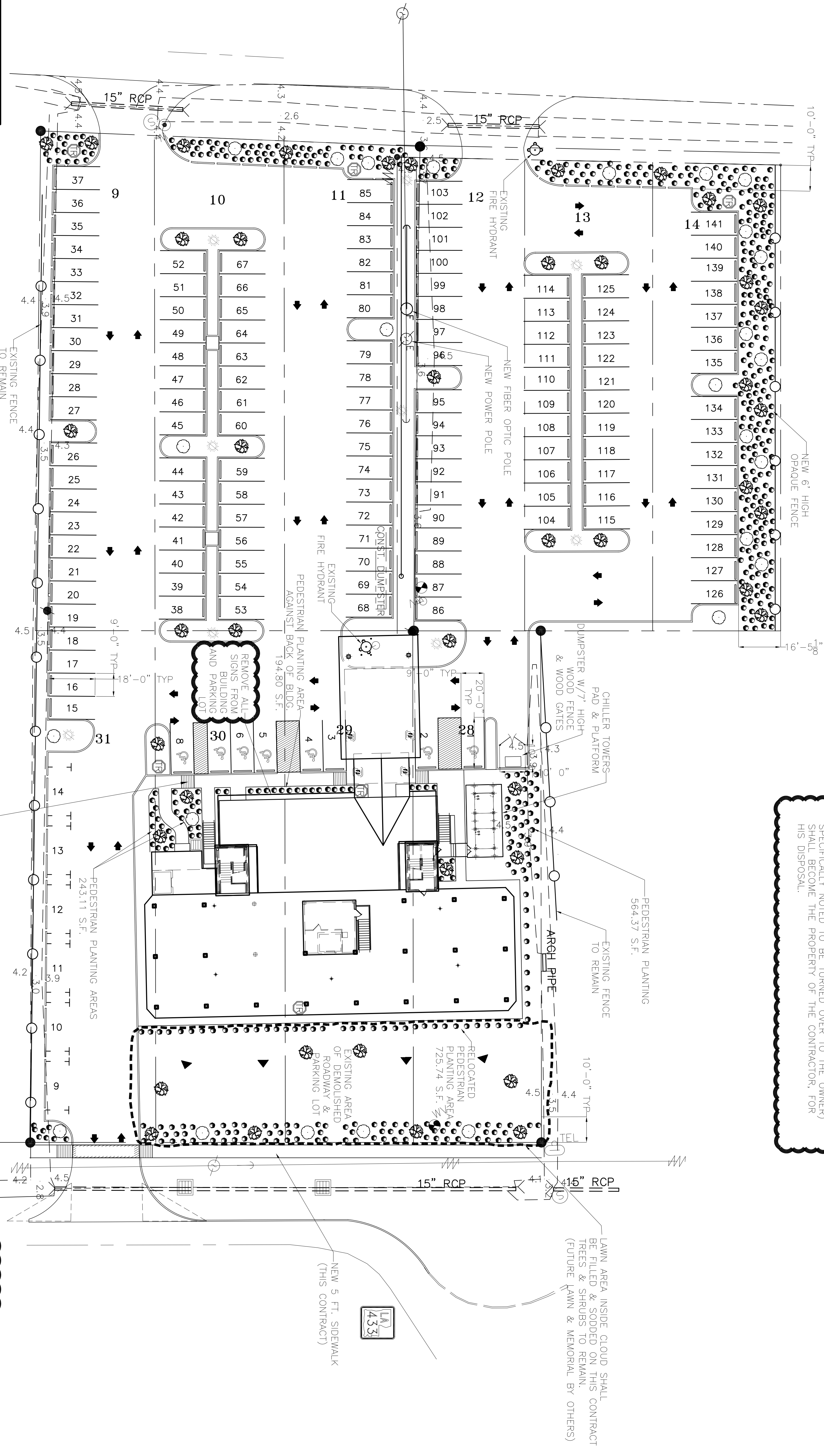


SGT. ALFRED DRIVE

NOTE:
ALL EXISTING TRASH, FURNITURE, COMPUTERS, STORED ITEMS IN THE BUILDING AND ON GROUNDS (EXCEPT FOR ITEMS SPECIFICALLY NOTED TO BE TURNED OVER TO THE OWNER) SHALL BECOME THE PROPERTY OF THE CONTRACTOR, FOR HIS DISPOSAL.



NOTE:
TREES ALONG THE WEST SIDE OF THE PROPERTY, IN THE DITCH AND INSIDE OR ON THE PROPERTY LINE SHALL BE REMOVED. TREES THAT OVERHANG THE PARKING AREAS SHALL BE TRIMMED TO THE PROPERTY LINE. STORM BLOWN TRASH WEST OF PROPERTY LINE AND WITHIN 5 FEET OF PROPERTY LINE SHALL BE REMOVED.

REQUIRED PEDESTRIAN PLANTING: 1103.84 S.F.
SUPPLIED PEDESTRIAN PLANTING: 1728.02 S.F.

SITE PLAN
SCALE: 1" = 20'-0"

— PARKING REQUIREMENT—
TOTAL AREA = 42,928 SQ. FT.
TOTAL USABLE AREA = 34,246 SQ. FT.
171 PARKING SPACES REQUIRED, 1 PER 200 SQ. FT.
9 ACCESSIBLE, 3 VAN SPACES
PREVIOUSLY AVAILABLE—90 SPACES

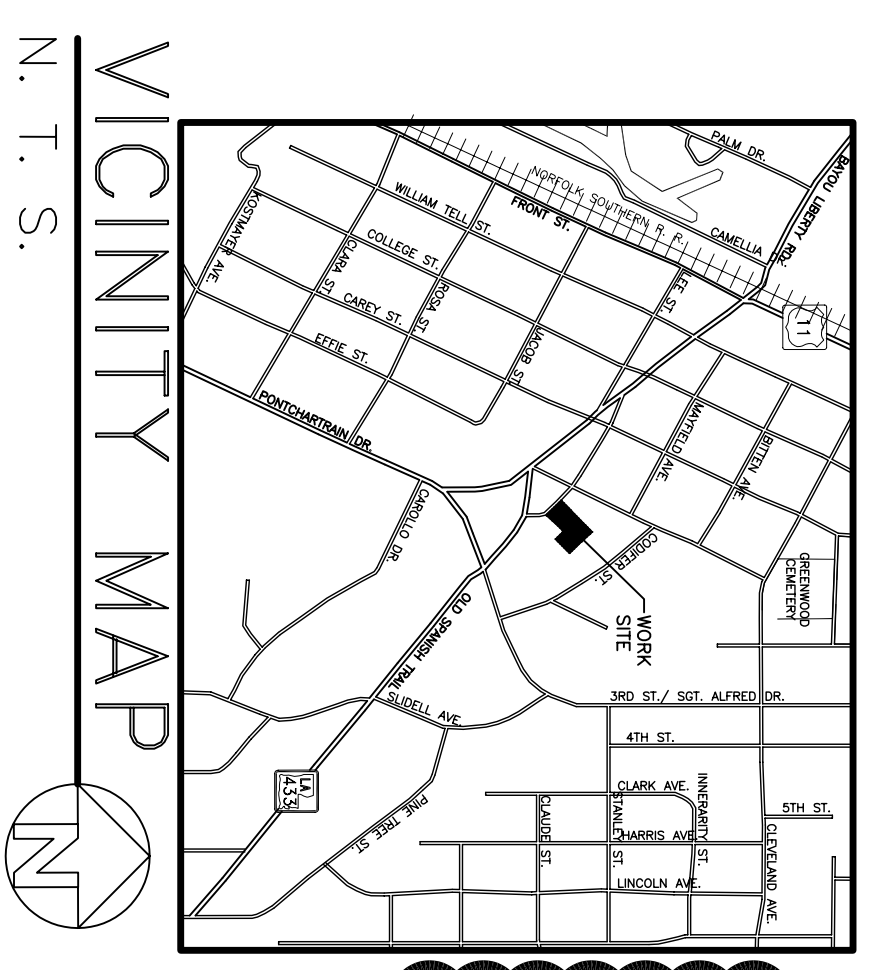
— FURNISHED—
141 PARKING SPACES FURNISHED
7 ACCESSIBLE, 4 VAN SPACES

"DETECTABLE WARNING"
ON RAMP SURFACES
CUT 1/4" DEEP GROOVES
THAT ARE SPACED
1" TO 3" ON CENTER
AND SCORED INTO CONCRETE.
PAINT CONTRASTING COLOR.
INSTALL HOOP SIGNS TYP

LEGEND

- CREPE MYRTLE
- SHUMARD OAK
- LARGE CAMELLIA
- HORN BEAM
- SHRUB
- NEW DROP INLET
- LANDSCAPE UPLIGHT
- LIGHT POLE
- TRASH RECEPTACLE
- CENTERLINE OF ROAD
- PROPERTY LINE
- NEW BUILDING
- EXISTING FENCE LINE
- SETBACK LINE

☁ = ADDENDUM 2 CHANGE



N. T. S.

LAWN AREA INSIDE CLOUD SHALL BE FILLED & SODDED ON THIS CONTRACT TREES & SHRUBS TO REMAIN. (FUTURE LAWN & MEMORIAL BY OTHERS)

NEW 5 FT. SIDEWALK (THIS CONTRACT)

433

CONTRACT SET - 10/10/07

ADDENDUM 2 REVISED: 08-20-07
REVISED: 03-01-07
REVISED: 02-27-07

RENOVATE OFFICE BUILDING

DAMMON ENGINEERING, INC.

1095 FLORIDA AVENUE 985-649-5832 SLIDELL, LA. 70458
DAMMONENGINEERING.COM

PROPOSED SITE PLAN

ST. TAMMANY PARISH OFFICE BUILDING
520 OLD SPANISH TRAIL
SLIDELL, LOUISIANA

SCALE: 1" = 20'

FILE:

JOB NO. 1729

DATE: 1-8-07

SHEET

C-3

OF