

- LEGEND**
- Ⓧ NEW DUPLEX RECEPTACLE
 - Ⓧ EXHAUST FAN
 - Ⓧ SECURITY ACCESS DOOR (SCANNER BY OTHERS)
 - Ⓧ COMM @ DATA
 - Ⓧ COLUMN MOUNTED UTILITY
 - Ⓧ POWER AND COMM POLE
 - Ⓧ SINGLE POLE SWITCH
 - Ⓧ THREE-WAY SWITCH
 - Ⓧ EXIT LIGHT FIXTURE (BATTERY BACK UP), SECURITY ACCESS DOOR (SCANNER BY OTHERS)
 - Ⓧ TWO TUBE 4' FLOURESCENT
 - Ⓧ OUTSIDE FLOOD WORK LIGHTS 120/240 V 250W HPS W/ BATTERY BACKUP

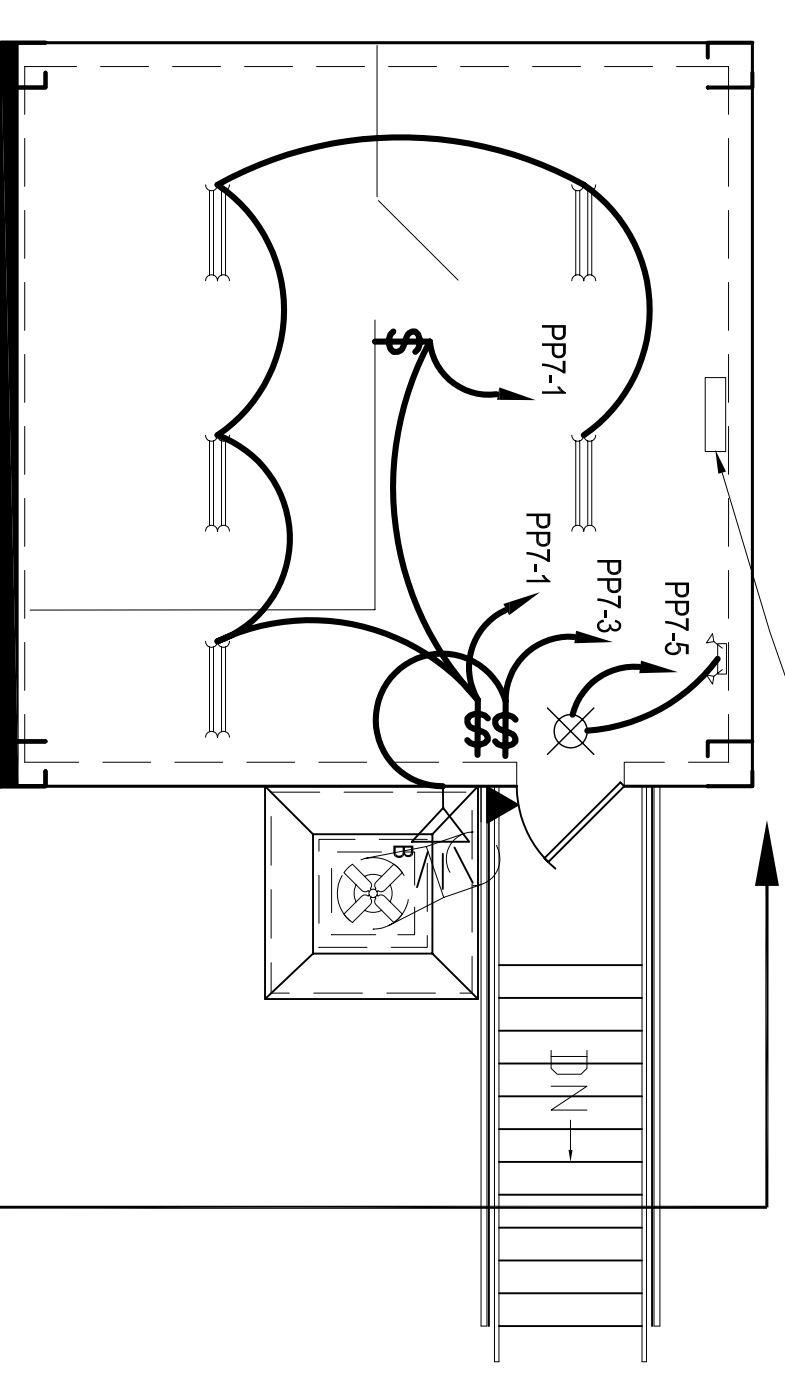
NOTES

ALL NEW POWER PANELS ARE TO BE MOUNTED ON THE NORTH WALL OF THE MECHANICAL ROOMS

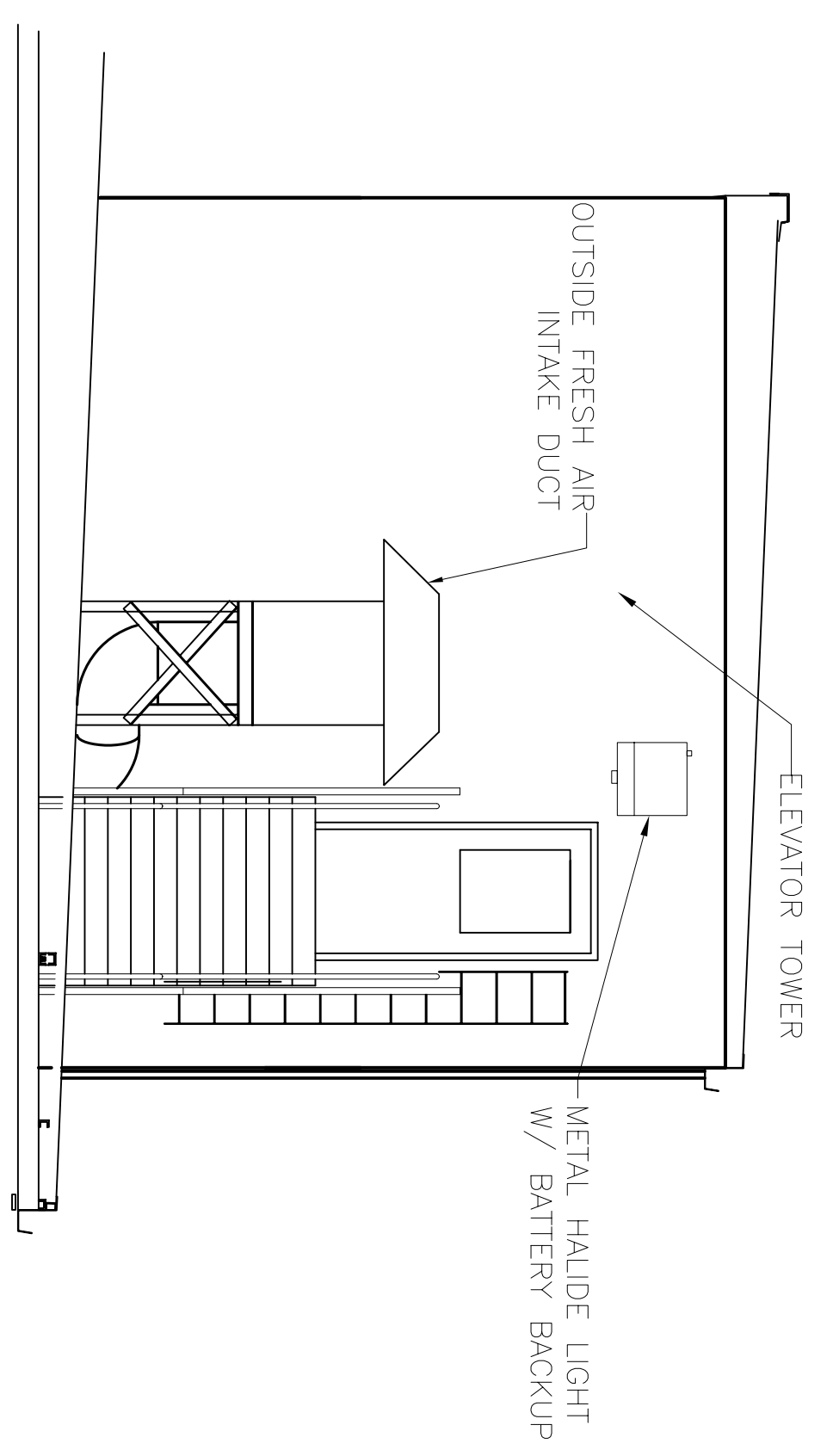
ROOF ELECTRICAL PLAN
SCALE: 1/8" = 1'-0"

☁ -INDICATES ITEMS CHANGED- 02/26/08

PL-7 480/277V 3Ø 4 WIRE



ELEVATOR TOWER LIGHTING PLAN



SECTION A
SCALE: 1/4" = 1'-0"

HVAC REVISED: 02/26/08ab
HVAC REVISED: 11/05/07ab
HVAC REVISED: 05/17/07ab
HVAC REVISED: 05/07/07ab
HVAC REVISED: 03/07/07ab

RFP #2 11-13-07

ROOF ELECTRICAL PLAN
ST. TAMMANY PARISH ADMIN. COMPLEX
520 OLD SPANISH TRAIL
SLIDELL, LOUISIANA

RENOVATE OFFICE BUILDING

DAMMON ENGINEERING. INC.

1095 FLORIDA AVENUE 985-649-5832 SLIDELL, LA. 70458
DAMMONENGINEERING.COM

SCALE: AS NOTED

FILE:

JOB NO. 1729

DATE: 1-8-07

SHEET

E7

OF