

1ST FLOOR HVAC EQUIPMENT - DUCT HEATERS								
ROOM NO.	HEATER NO.	CFM	KW	STAGES	VOLTAGE	ELECTRICAL PHASE	DUCT SIZE	HEATER MODEL
110 NW	1-1	1,175	12	3	460	3	24X12	MARVEL HF SERIES
110 NE	1-2	885	10	2	460	3	16X12	MARVEL HF SERIES
110 NE	1-3	1,455	15	3	460	3	20X12	MARVEL HF SERIES
110 NE	1-4	1,810	20	4	460	3	24X14	MARVEL HF SERIES

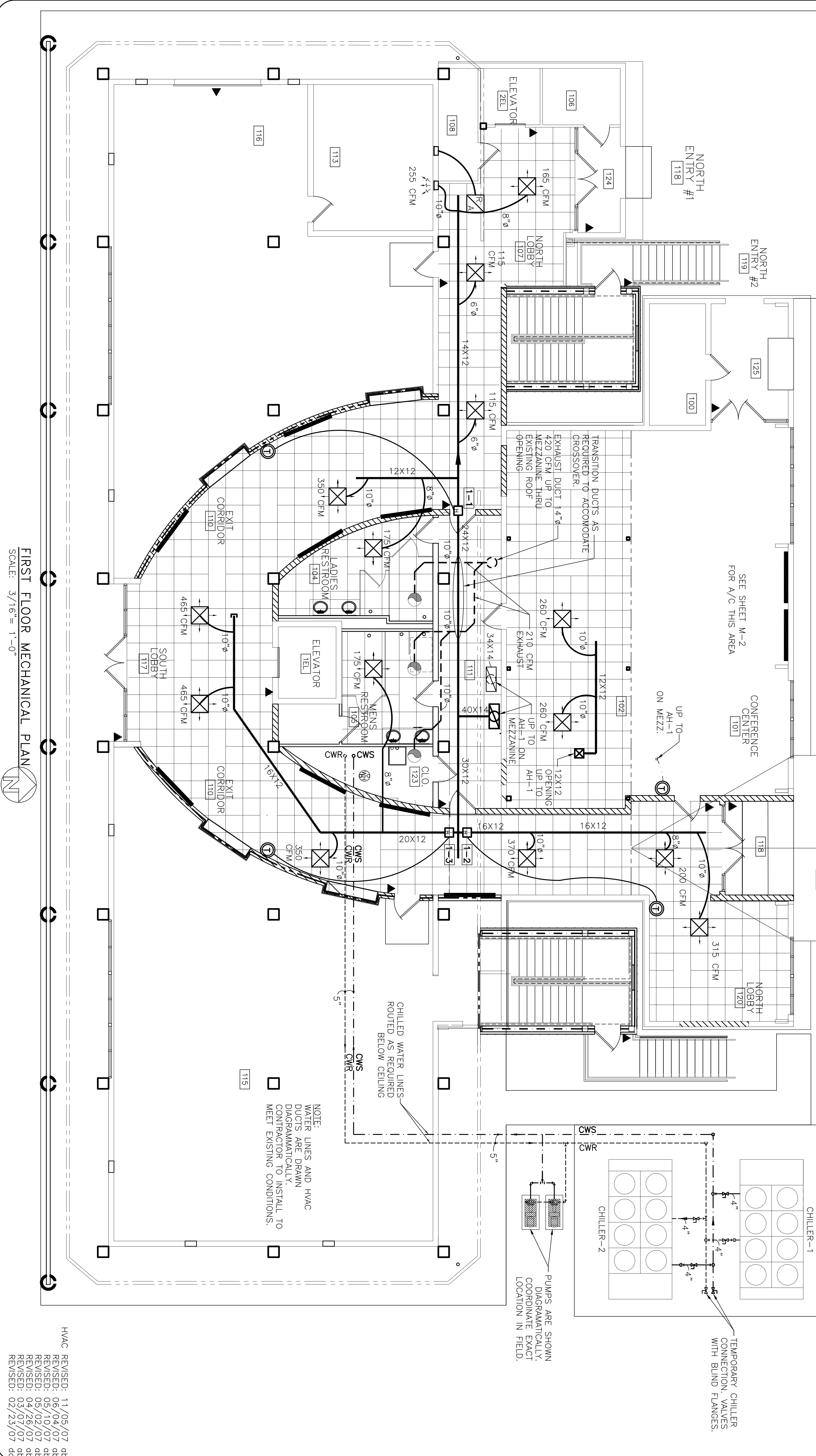
NOTES: *FOR HEATERS 1-4 SEE DRAWING M-2. HEATERS TO BE PROVIDED WITH CONTROL TRANSFORMERS AND DIFFERENTIAL PRESSURE SWITCHES.

NOTES

1. SEE DWG. M-9 "CHILLED WATER RISER DIAGRAM" FOR PIPE SIZES.
2. SEE DWG. M-11 "OUTSIDE AIR RISER DIAGRAM" FOR DUCT SIZES.
3. CONDENSATE LINES MAY BE RUN DIRECTLY TO DRAIN ON SAME FLOOR WHERE SUFFICIENT DROP IS AVAILABLE.
4. INSULATE ALL PIPING.
5. 15 FT. LONG HVAC FLEX HOSE MAY BE SUBSTITUTED AT DUCT RUN ENDS.
6. ALL NEW DUCTWORK SIZES SHOWN ARE CLEAR INSIDE DIMENSIONS.
7. ADD VOLUME DAMPERS AT ALL DUCTWORK TEES, BRANCHES, AND TAKE OFFS.
8. WRAP ALL DUCT EXTERNALLY WITH 1" THICK, R-4.2 DUCT WRAP.
9. ALL RECTANGULAR DUCT WORK SHALL HAVE WARD ANGLE CONNECTIONS.

LEGEND

- ELECTRIC DUCT HEATER
- VARIABLE AIR VOLUME DAMPER
- HVAC AIR REGISTER
- 24 X 24, TTUS #TMS
- EXHAUST BLOWER
- THERMOSTAT
- HVAC FLEX HOSE. NOT TO EXCEED 5' IN LENGTH.
- WALL AIR RETURN
- AUTO SHUT-OFF DAMPER
- FIRE DAMPER
- CWS - CHILLED WATER SUPPLY
- CWR - CHILLED WATER RETURN
- CD - CONDENSATE DRAIN
- FA - FRESH AIR
- THERMOSTAT WIRE
- RETURN AIR CASAD OPENING IN WALL 32 x 12 (ROOM TO HALL CEILING)

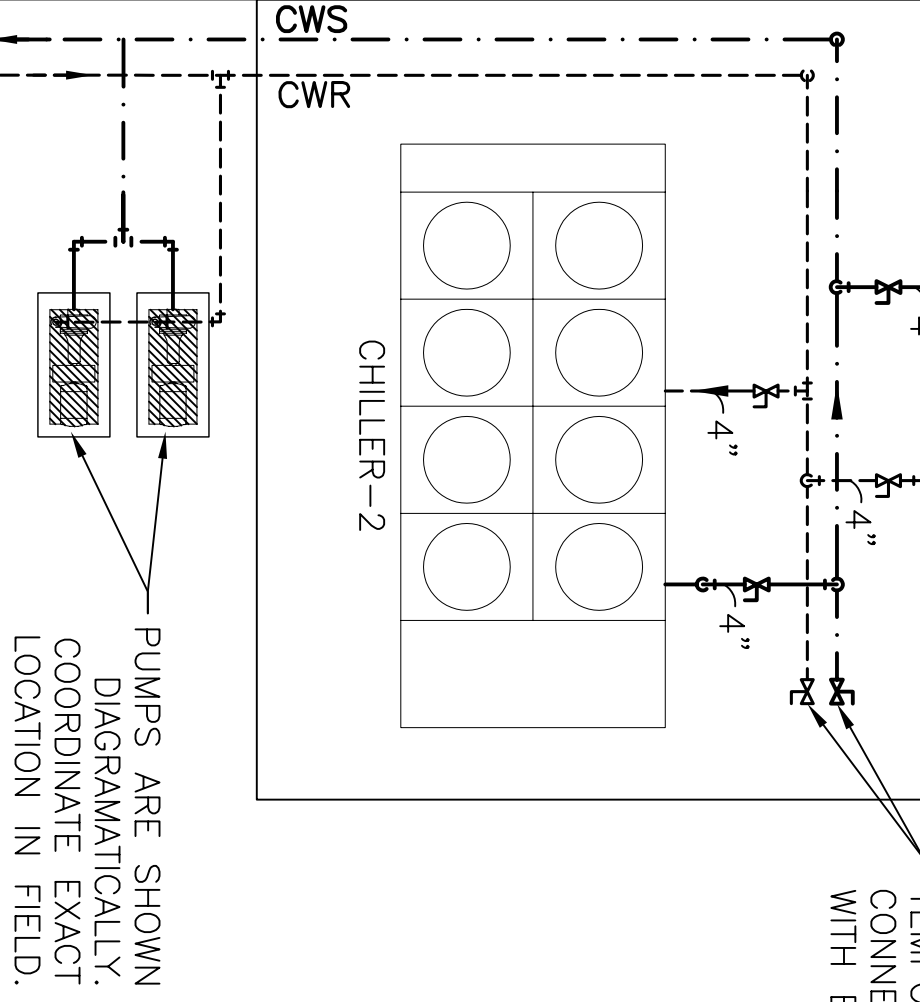


FIRST FLOOR MECHANICAL PLAN



SCALE: 3/16" = 1'-0"

NOTE:
WATER LINES AND HVAC DUCTS ARE DRAWN DIAGRAMMATICALLY. CONTRACTOR TO INSTALL TO MEET EXISTING CONDITIONS.



- HVAC REVISED: 11/05/07
- REVISED: 06/04/07
- REVISED: 05/10/07
- REVISED: 05/02/07
- REVISED: 04/25/07
- REVISED: 03/07/07
- REVISED: 02/23/07

	<p>RENOVATE OFFICE BUILDING</p> <p>DAMMON ENGINEERING. INC.</p> <p>1095 FLORIDA AVENUE 985-649-5832 SLIDELL, LA. 70458 DAMMONENGINEERING.COM</p>	<p>1ST FLOOR MECHANICAL PLAN</p> <p>ST. TAMMANY PARISH ADMIN. COMPLEX 520 OLD SPANISH TRAIL SLIDELL, LOUISIANA</p>
<p>SHEET</p> <p style="font-size: 2em;">M-1</p> <p>OF</p>	<p>SCALE: AS NOTED</p> <p>FILE:</p> <p>JOB NO. 1729</p> <p>DATE: 1-8-07</p>	<p>REVISED: 11/05/07 REVISED: 06/04/07 REVISED: 05/10/07 REVISED: 05/02/07 REVISED: 04/25/07 REVISED: 03/07/07 REVISED: 02/23/07 </p>