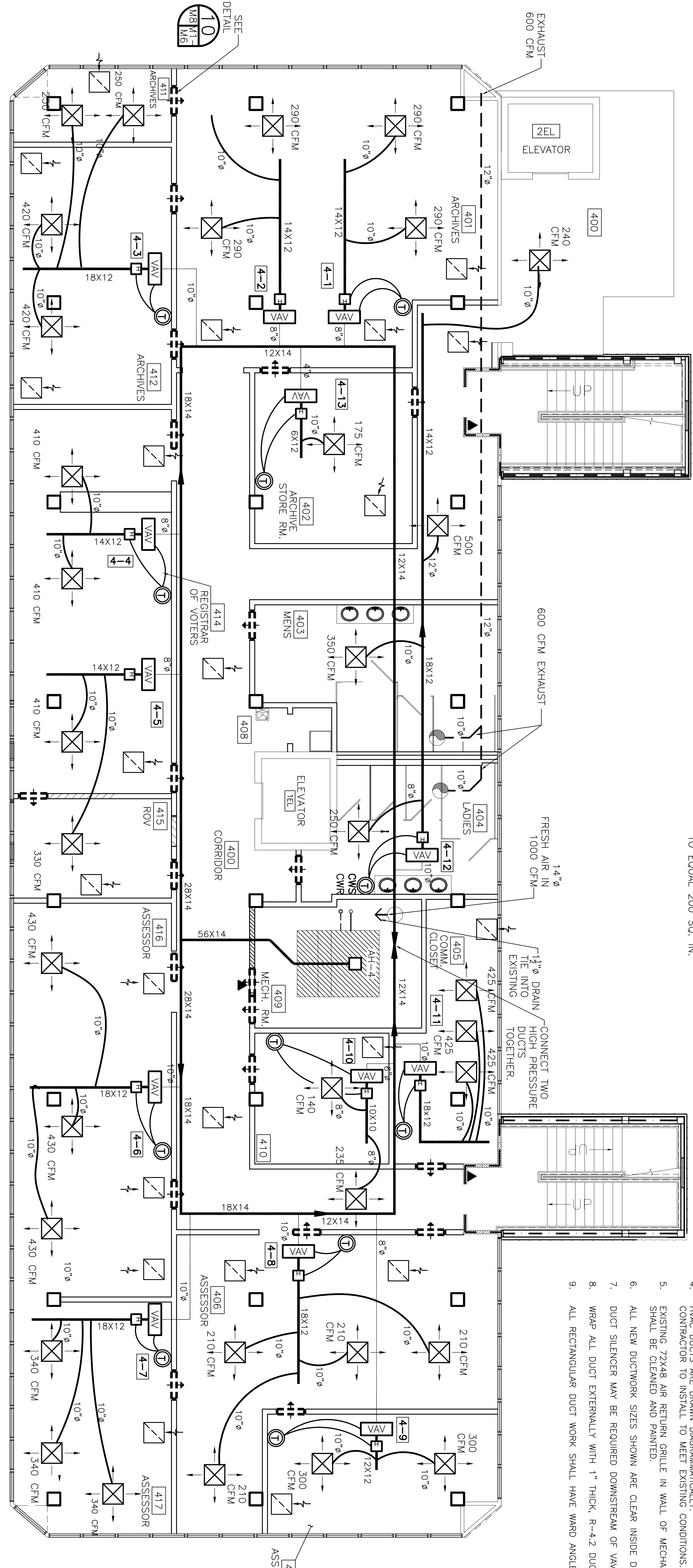


LEGEND

- NEW HVAC SUPPLY DUCT
- - - NEW EXHAUST DUCT
- ⊗ — HVAC AIR REGISTER 24 X 24, TITUS #TMS
- ⊕ — THERMOSTAT
- ⊖ — ELECTRIC DUCT HEATER
- ⊞ — VARIABLE AIR VOLUME DAMPER
- ⊙ — EXHAUST BLOWER
- ⊞ — VARIABLE FREQUENCY DRIVER
- ⊞ — RETURN AIR GRILLE TO BE TITUS #80 W/1/2 X 1/2 CORE 500 FPM MECH. VELL. TOT. PRESS. .032" H2O 24 X 24
- ⊞ — RETURN AIR CASPED OPENING IN WALL - (ROOM TO CEILING) - TO EQUAL 200 SQ. IN.



- NOTES:
1. EACH ROOM TO HAVE AN OPENING BETWEEN ROOM CEILING SPACE AND HALL CEILING FOR RETURN AIR (32X12, TYP).
 2. EXISTING DUCTWORK TO BE REUSED SHALL BE CLEANED PRIOR TO USAGE. SEE SPECIFICATIONS.
 3. PORTIONS OF DUCTWORK NOT SHOWN AS BEING REUSED SHALL BE REMOVED, CLEANED AND REUSED IN OTHER LOCATIONS CALLING FOR THAT DUCT SIZE OR SMALLER. INSTAL CLOSE PLATES AT ALL UNUSED OPENINGS IN DUCT NOT BEING REUSED.
 4. REMOVE ALL UNUSED DUCT, HANGERS, ETC. WHEN COMPLETE.
 5. HVAC DUCTS ARE DRAWN DIAGRAMMATICALLY. CONTRACTOR TO INSTALL TO MEET EXISTING CONDITIONS.
 6. EXISTING 72X48 AIR RETURN GRILLE IN WALL OF MECHANICAL ROOM SHALL BE CLEANED AND PAINTED.
 7. ALL NEW DUCTWORK SIZES SHOWN ARE CLEAR INSIDE DIMENSIONS.
 8. DUCT SILENCER MAY BE REQUIRED DOWNSTREAM OF VAV.
 9. WRAP ALL DUCT EXTERNALLY WITH 1" THICK, R-4.2 DUCT WRAP.
 10. ALL RECTANGULAR DUCT WORK SHALL HAVE WARD ANGLE CONNECTIONS.

FOURTH FLOOR MECHANICAL PLAN
SCALE: 3/16" = 1'-0"

4TH FLOOR HVAC EQUIPMENT - VAV BOXES										4TH FLOOR HVAC EQUIPMENT - VAV BOXES										4TH FLOOR HVAC EQUIPMENT - VAV BOXES									
ROOM	VAV NO.	MAX CFM	MIN CFM	KW	STAGES	VOLTAGE	PHASE	VAV VALVE SIZE	ROOM	VAV NO.	MAX CFM	MIN CFM	KW	STAGES	VOLTAGE	PHASE	VAV VALVE SIZE	ROOM	VAV NO.	MAX CFM	MIN CFM	KW	STAGES	VOLTAGE	PHASE	VAV VALVE SIZE			
401	4-1	900	580	265	3.5	2	277	8" DIAMETER**	416	4-6	1,400	1,290	410	5.5	2	277	10" DIAMETER	405	4-11	1,400	1,400	0	-	-	-	10" DIAMETER			
401	4-2	900	580	265	3.5	2	277	8" DIAMETER**	417	4-7	1,400	1,020	410	5.5	2	277	10" DIAMETER	404	4-12	1,400	1,340	820	11	3	277	10" DIAMETER			
412	4-3	1,400	1,340	410	5.5	2	277	10" DIAMETER	408	4-8	1,400	840	410	5.5	2	277	10" DIAMETER	402	4-13	350	75	125	1.0	1	277	4" DIAMETER			
414	4-4	900	820	265	3.5	2	277	8" DIAMETER**	407	4-9	900	800	265	3.5	2	277	8" DIAMETER												
414	4-5	900	740	265	3.5	2	277	8" DIAMETER**	410	4-10	500	375	180	2.0	2	277	6" DIAMETER												

VAV BOXES: TRANE MODEL VCEF OR EQUIVALENT. *SLAVE BOXES 4-1 & 4-2. **SLAVE BOXES 4-4 & 4-5.

VAV BOXES: TRANE MODEL VCEF OR EQUIVALENT. *SLAVE BOXES 4-1 & 4-2.

VAV BOXES: TRANE MODEL VCEF OR EQUIVALENT.

VAV BOXES: TRANE MODEL VCEF OR EQUIVALENT.

VAV BOXES: TRANE MODEL VCEF OR EQUIVALENT.

HVAC
 REVISED: 11-05-07/ab
 REVISED: 06-04-07/ab
 REVISED: 05-10-07/ab
 REVISED: 05-02-07/ab
 REVISED: 04-08-07/ab
 REVISED: 03-30-07/ab
 REVISED: 03-22-07

RENOVATE OFFICE BUILDING

DAMMON ENGINEERING. INC.

 1095 FLORIDA AVENUE 985-649-5832 SLIDELL, LA. 70458

 DAMMONENGINEERING.COM

4TH FLOOR MECHANICAL PLAN

 ST. TAMMANY PARISH ADMIN. COMPLEX

 520 OLD SPANISH TRAIL

 SLIDELL, LOUISIANA

SCALE: AS NOTED

 FILE:

 JOB NO. 1729

 DATE: 12-07-06

 SHEET

 M-4

 OF