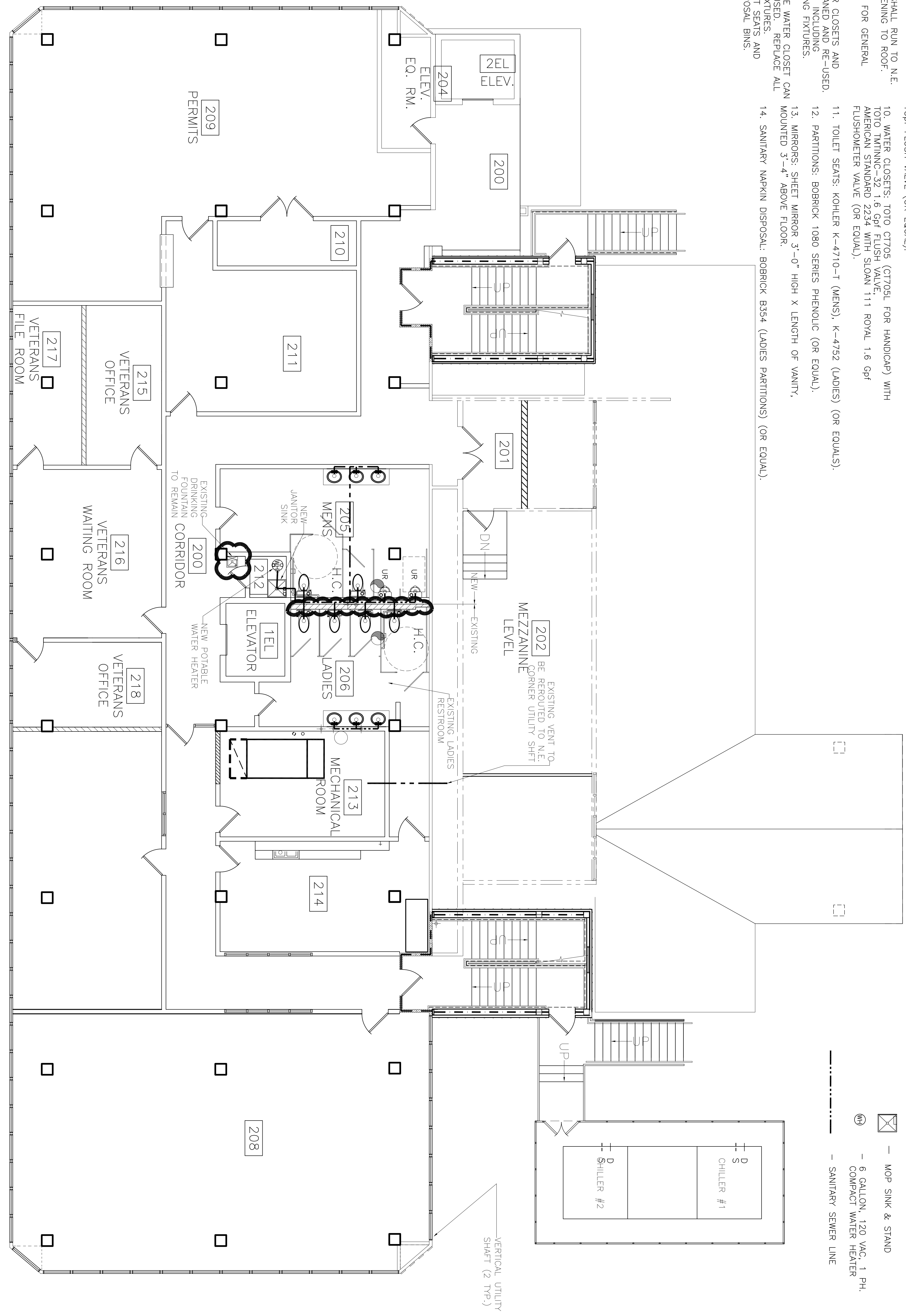
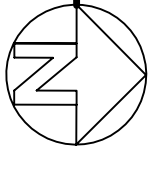


- NOTES:
1. MENS IS A NEW RESTROOM AND WILL REQUIRE EXTENDING SERVICES THRU THE WALL, NEW WALL SUPPORTS FOR WALL HUNG FIXTURES, ETC. DRAIN FROM LAVATORIES MUST BE NEW THRU FLOOR AND EXTENDED TO EXISTING SERVICE.
 2. NEW VENT LINES SHALL RUN TO N.E. CORNER VERTICAL OPENING TO ROOF.
 3. SEE DRAWING P-1 FOR GENERAL NOTES.
 4. MENS ROOM WATER CLOSETS AND URINALS CAN BE CLEANED AND RE-USED. REPLACE ALL OTHERS, INCLUDING PIPING AND PIPING FIXTURES.
 5. LADIES ROOM— ONE WATER CLOSET CAN BE CLEANED AND REUSED. REPLACE ALL PIPING AND PIPING FIXTURES.
 6. REPLACE ALL TOILET SEATS AND SANITARY NAPKIN DISPOSAL BINS.
 7. INSTALL OWNER PROVIDED SOAP DISPENSERS AND TOILET PAPER & PAPER TOWEL HOLDERS.
 8. INTEGRAL LAVATORY/VANITY: CULTURED MARBLE, SIZE AS SHOWN ON DRAWING A-21.
 9. URINALS: TOTO UT447 (OR EQUAL) WITH TOTO TMU11NC 16gpf FLUSH VALVE (OR EQUAL).
 10. WATER CLOSETS: TOTO CT705 (CT705L FOR HANDICAP) WITH TOTO TMU11NC-32 1.6 GPF FLUSH VALVE, AMERICAN STANDARD 2234 WITH SLOAN 111 ROYAL 1.6 GPF FLUSHMETER VALVE (OR EQUAL).
 11. TOILET SEATS: KOHLER K-4710-T (MENS), K-4752 (LADIES) (OR EQUALS).
 12. PARTITIONS: BOBRICK 1080 SERIES PHENOLIC (OR EQUAL).
 13. MIRRORS: SHEET MIRROR 3'-0" HIGH X LENGTH OF VANITY, MOUNTED 3'-4" ABOVE FLOOR.
 14. SANITARY NAPKIN DISPOSAL: BOBRICK B354 (LADIES PARTITIONS) (OR EQUAL).



SECOND FLOOR PLUMBING PLAN

SCALE: 3/16" = 1'-0"



= ADDENDUM 3 CHANGE

ADDENDUM 3 REVISED 08/20/07/ab
 REVISED 03/07/07/ab
 REVISED 2/19/07
 REVISED 1/24/07

CONTRACT SET- 10/10/07

2ND FLOOR PLUMBING PLAN

ST. TAMMANY PARISH ADMIN. COMPLEX
 520 OLD SPANISH TRAIL
 SLIDELL, LOUISIANA

RENOVATE OFFICE BUILDING

DAMMON ENGINEERING. INC.

1095 FLORIDA AVENUE 985-649-5832 SLIDELL, LA. 70458
 DAMMONENGINEERING.COM

SCALE: AS NOTED
FILE:
JOB NO.: 1729
DATE: 1-8-07
SHEET
P-2
OF