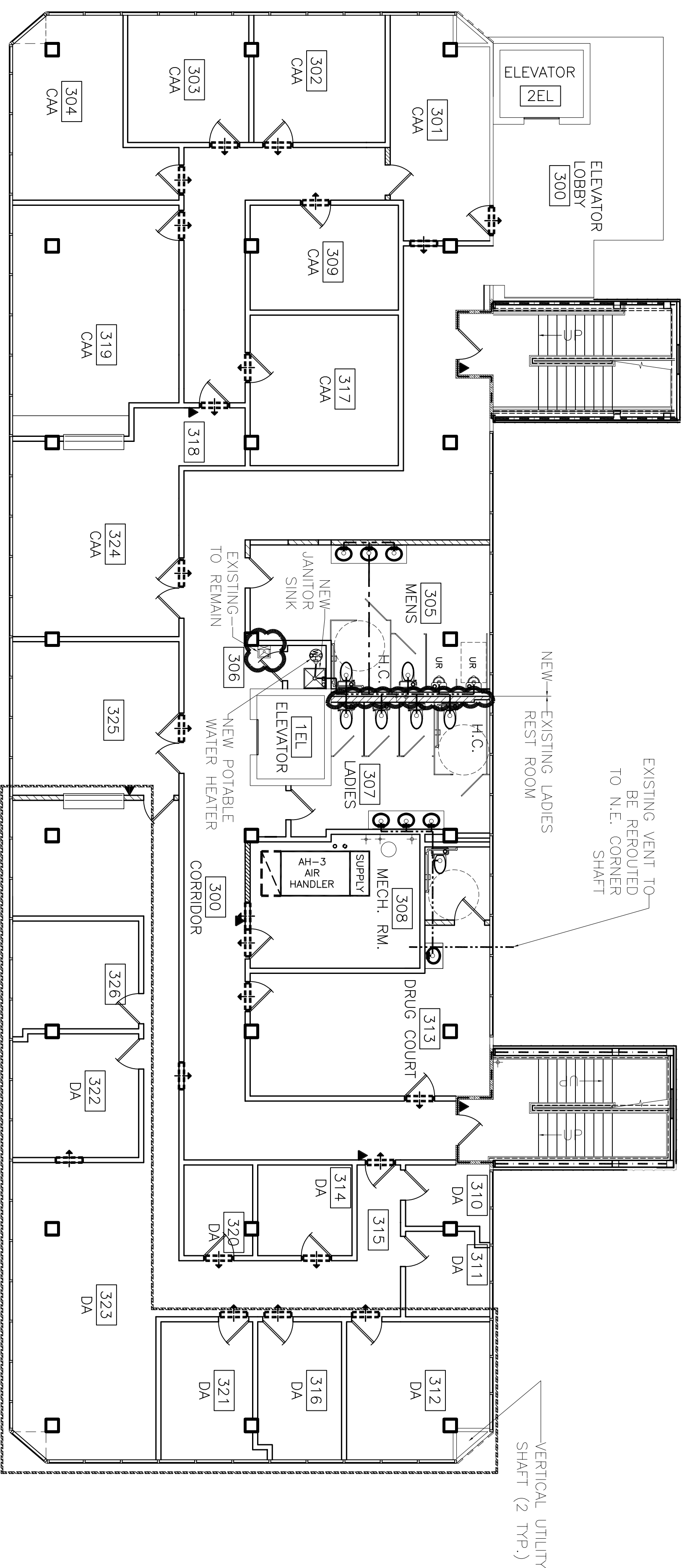


- NOTES:
1. MENS IS A NEW RESTROOM AND WILL REQUIRE EXTENDING SERVICES THRU THE WALL. NEW WALL SUPPORTS FOR WALL HUNG FIXTURES, ETC. DRAIN FROM LAVATORIES MUST BE NEW THRU FLOOR AND EXTENDED TO EXISTING SERVICE.
  2. NEW VENT LINES SHALL RUN TO N.E. CORNER VERTICAL OPENING TO ROOF.
  3. SEE DRAWING P-1 FOR GENERAL NOTES.
  4. MENS ROOM URINALS CAN BE CLEANED AND RE-USED. REPLACE ALL WATER CLOSETS, PIPING AND PIPING FIXTURES.
  5. LADIES ROOM WATER CLOSETS CAN BE CLEANED AND REUSED. REPLACE ALL OTHER FIXTURES, PIPING AND PIPING FIXTURES.

- NOTES:
6. REPLACE ALL TOILET SEATS AND SANITARY NAPKIN DISPOSAL BINS.
  7. INSTALL OWNER PROVIDED SOAP DISPENSERS AND TOILET PAPER & PAPER TOWEL HOLDERS.
  8. INTEGRAL LAVATORY/VANITY: CULTURED MARBLE. SIZE AS SHOWN ON DRAWING A-21.
  9. URINALS: TOTO UT447 (OR EQUAL) WITH TOTO TMJ1NCC 1GPF FLUSH VALVE (OR EQUAL).
  10. WATER CLOSETS: TOTO CT705 (CT705L FOR HANDICAP) WITH TOTO TMJ1NCC-32 1.6 GPF FLUSH VALVE, AMERICAN STANDARD 2234 WITH SLOAN 111 ROYAL 1.6 GPF FLUSHMETER VALVE (OR EQUAL).
  11. TOILET SEATS: KOHLER K-4710-T (MENS), K-4752 (LADIES) (OR EQUALS).
  12. PARTITIONS: BOBRICK 1080 SERIES PHENOLIC (OR EQUAL).
  13. MIRRORS: SHEET MIRROR 3'-0" HIGH X LENGTH OF VANITY, MOUNTED 3'-4" ABOVE FLOOR.
  14. SANITARY NAPKIN DISPOSAL: BOBRICK B354 (LADIES PARTITIONS) (OR EQUAL).



THIRD FLOOR PLUMBING PLAN  
SCALE: 1/8" = 1'-0"

- LEGEND
- ☒ - MOP SINK & STAND
  - ⊕ - 6 GALLON, 120 VAC, 1 PH. COMPACT WATER HEATER
  - - SANITARY SEWER LINE

- ☒ - INDICATES AREAS CHANGED - 10/17/08
- ☁ = ADDENDUM 3 CHANGE

RFP 6 REVISED: 10/17/08ab  
ADDENDUM 3 REVISED: 8/20/07  
REVISED: 2/19/07  
REVISED: 1/24/07

CONTRACT SET - 10/10/07

3RD FLOOR PLUMBING PLAN  
ST. TAMMANY PARISH ADMIN. COMPLEX  
520 OLD SPANISH TRAIL  
SLIDELL, LOUISIANA

RENOVATE OFFICE BUILDING

**DAMMON ENGINEERING, INC.**

1095 FLORIDA AVENUE 985-649-5832 SLIDELL, LA. 70458  
DAMMONENGINEERING.COM

SCALE: AS NOTED

FILE:

JOB NO.: 1729

DATE: 1-7-08

SHEET

P-3

OF