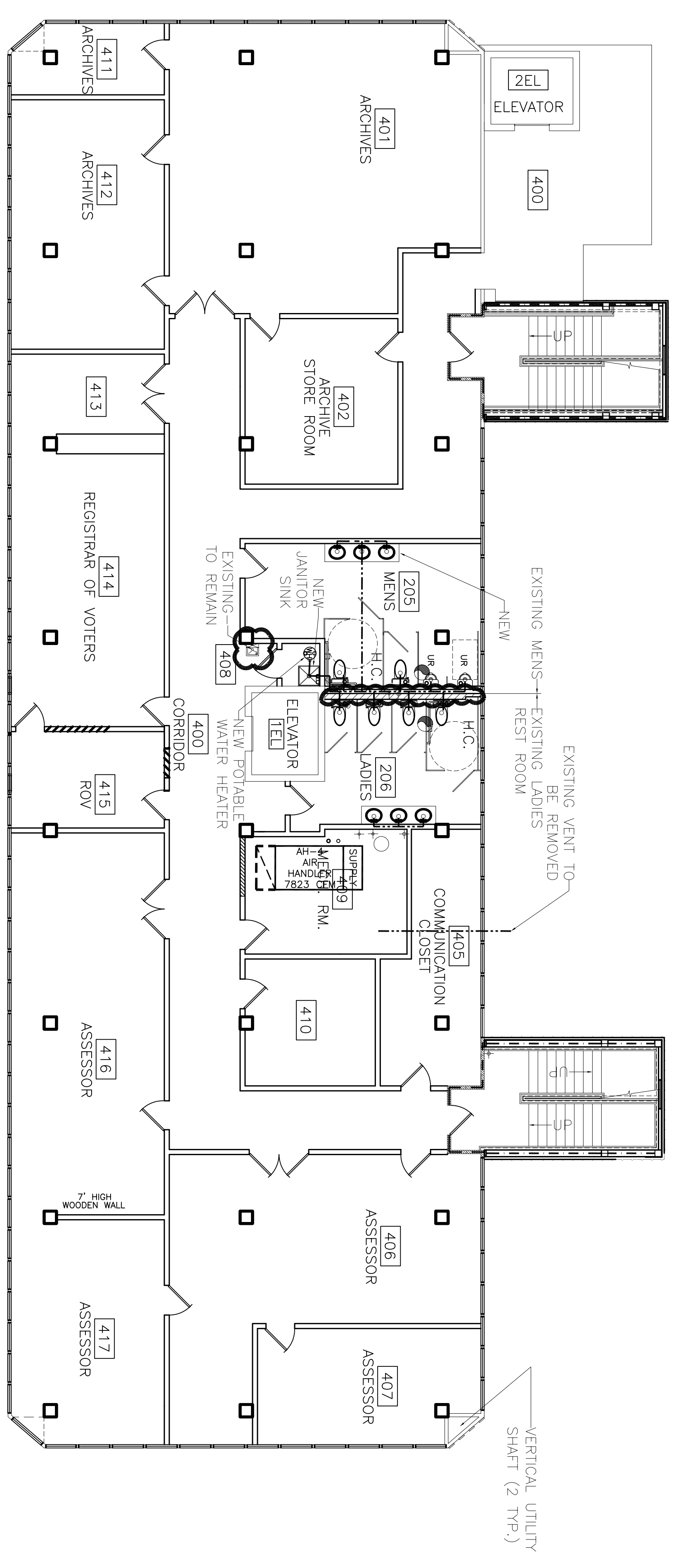


- NOTES:
1. NEW VENT LINES SHALL RUN TO N.E. CORNER VERTICAL OPENING TO ROOF.
  2. SEE DRAWING P-1 FOR GENERAL NOTES.
  3. MENS ROOM WATER CLOSETS, PIPING, PIPING FIXTURES, AND URINALS CAN BE CLEANED AND RE-USED. IF PIPING AND FIXTURES NOT REPLACED, IT MUST BE INSPECTED AND TESTED TO ENSURE IT IS IN PROPER WORKING ORDER.
  4. LADIES ROOM WATER CLOSETS (AND PIPING FIXTURE IN HANDICAPPED W.C. ONLY) CAN BE CLEANED AND REUSED. REPLACE ALL OTHER PIPING AND PIPING FIXTURES. IF PIPING AND FIXTURES IN HANDICAPPED STALL NOT REPLACED, IT MUST BE INSPECTED AND TESTED TO ENSURE IT IS IN PROPER WORKING ORDER.
  5. REPLACE ALL TOILET SEATS AND SANITARY NAPKIN DISPOSAL BINS.
  6. INSTALL OWNER PROVIDED SOAP DISPENSERS AND TOILET PAPER & PAPER TOWEL HOLDERS.

7. INTEGRAL LAVATORY/VANITY: CULTURED MARBLE, SIZE AS SHOWN ON DRAWING A-21.
8. URINALS: TOTD UT447 (OR EQUAL) WITH TOTD TMJUNNC 1gpf FLUSH VALVE (OR EQUAL).
9. WATER CLOSETS: TOTD C1705 (C1705L FOR HANDICAP) WITH TOTD TMJUNNC-32 1.6 GPF FLUSH VALVE, AMERICAN STANDARD 2234 WITH SLDAN 111 ROYAL 1.6 GPF FLUSHMETER VALVE (OR EQUAL).
10. TOILET SEATS: KOHLER K-4710-T (MENS), K-4752 (LADIES) (OR EQUALS).
11. PARTITIONS: BOBRICK 1080 SERIES PHENDLIC (OR EQUAL).
12. MIRRORS: SHEET MIRROR 3'-0" HIGH X LENGTH OF VANITY, MOUNTED 3'-4" ABOVE FLOOR.
13. SANITARY NAPKIN DISPOSAL: BOBRICK B354 (LADIES PARTITIONS) (OR EQUAL).



FOURTH FLOOR PLUMBING PLAN  
SCALE: 1/8" = 1'-0"

- LEGEND
- ☒ - MOP SINK & STAND
  - ⊕ - 6 GALLON, 120 VAC, 1 PH. COMPACT WATER HEATER
  - - SANITARY SEWER LINE

☁ = ADDENDUM 3 CHANGE

ADDENDUM 3 REVISED: 8/20/07  
REVISED: 2/19/07  
REVISED: 1/24/07

CONTRACT SET - 10/10/07

4TH FLOOR PLUMBING PLAN  
ST. TAMMANY PARISH ADMIN. COMPLEX  
520 OLD SPANISH TRAIL  
SLIDELL, LOUISIANA

RENOVATE OFFICE BUILDING

**DAMMON ENGINEERING, INC.**

1095 FLORIDA AVENUE 985-649-5832 SLIDELL, LA. 70458  
DAMMONENGINEERING.COM

SCALE: AS NOTED

FILE:

JOB NO. 1729

DATE: 1-8-07

SHEET

P-4

OF