

ALTERNATE BID #2

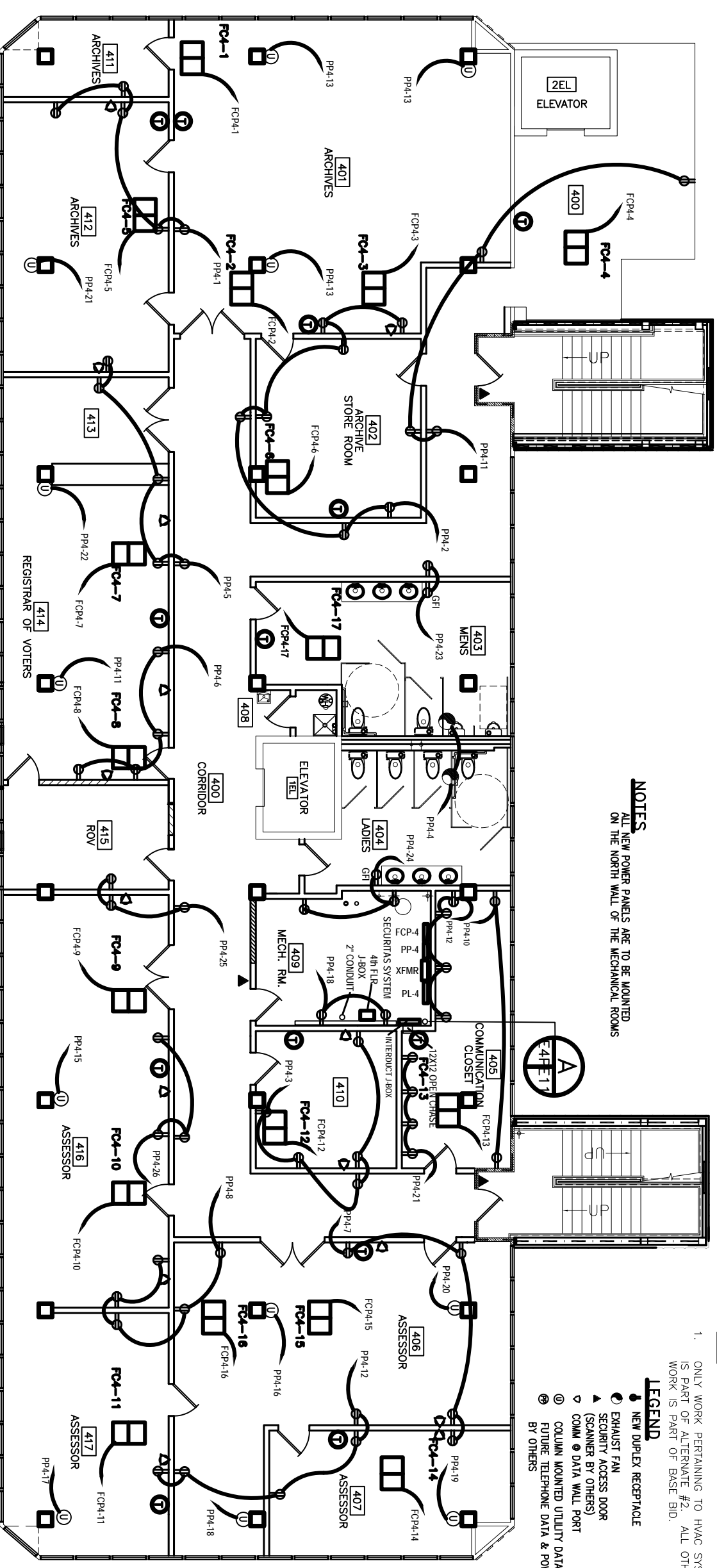
HVAC FAN COIL UNITS
IN LIEU OF VAV SYSTEM

NOTES:

1. ONLY WORK PERTAINING TO HVAC SYSTEM IS PART OF ALTERNATE #2. ALL OTHER WORK IS PART OF BASE BID.

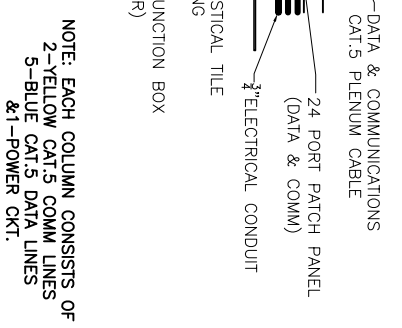
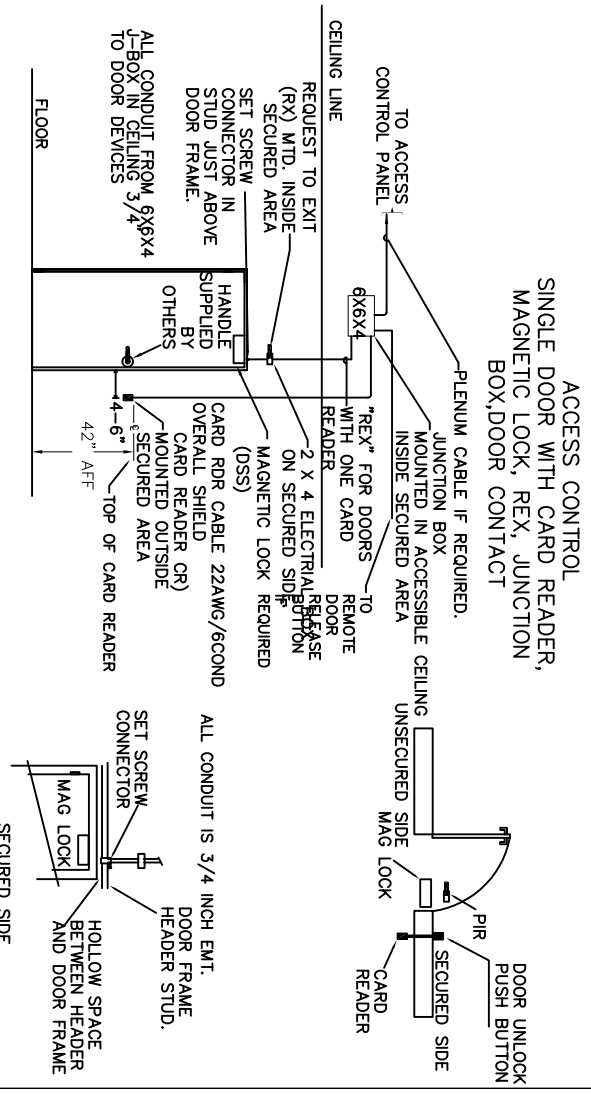
LEGEND

- ◆ NEW DUPLEX RECEPTACLE
- EXHAUST FAN
- ▲ SECURITY ACCESS DOOR (SCANNER BY OTHERS)
- ◊ COMM @ DATA WALL PORT
- ⊙ COLUMN MOUNTED UTILITY DATA AND POWER
- ⊕ FUTURE TELEPHONE DATA & POWER POLES BY OTHERS



NOTES
ALL NEW POWER PANELS ARE TO BE MOUNTED ON THE NORTH WALL OF THE MECHANICAL ROOMS

FOURTH FLOOR POWER PLAN
SCALE: 3/16" = 1'-0"



COLUMN MOUNTED UTILITY DETAIL
SCALE: NTS

NOTE: EACH COLUMN CONSISTS OF
2-YELLOW CAT.5 COMM LINES
5-BLUE CAT.5 DATA LINES
& 1-POWER CKT.

REVISED: 05/17/07db
REVISED: 05/07/07db
REVISED: 01/23/07

<p>RENOVATE OFFICE BUILDING</p> <h2 style="margin: 0;">DAMMON ENGINEERING. INC.</h2> <p style="font-size: small;">1095 FLORIDA AVENUE 985-649-5832 SLIDELL, LA. 70458 DAMMONENGINEERING.COM</p>	<p>4TH FLOOR POWER PLAN</p> <p>ST. TAMMANY PARISH ADMIN. COMPLEX OLD SPANISH TRAIL SLIDELL, LOUISIANA</p>	<p>FILE: _____</p> <p>SCALE: AS NOTED</p> <p>JOB NO. 1729</p> <p>DATE: 1-8-07</p> <p>SHEET</p> <h1 style="font-size: 2em; margin: 0;">E4P</h1> <p>OF _____</p>
-----------------------------------------------------------------------------------------------------------------------------------------------------------------------------------------------------	--------------------------------------------------------------------------------------------------------------------------	----------------------------------------------------------------------------------------------------------------------------------------------------------------