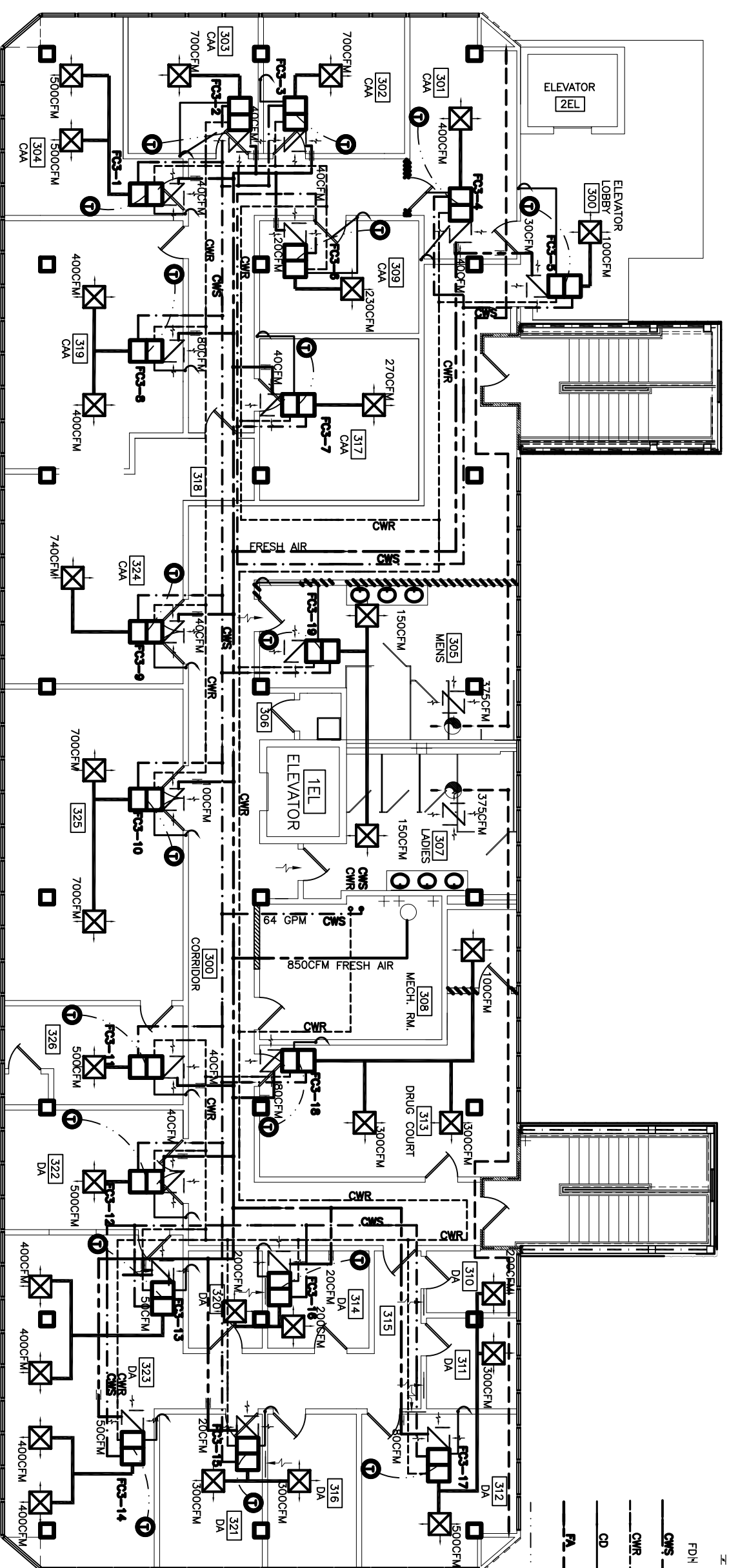


3RD FLOOR HVAC EQUIPMENT SCHEDULE - FAN COILS

FAN #	FAN NUMBER	COIL NUMBER	SENS	COOLING LOAD (BTU/H)	LATENT TOTAL	GPM WATER (BASED ON TOTAL)	CFM SPECIFIED	HEAT LOAD (BTU/H)	WATTS	HEATER STRIP OUT/AIR (KW)	FAN COIL TYPE (BASED ON CARRIER)
304	FC-3-1	FC-3-1	24,060	1,912	25,972	5.2	1,000	8,760	2,567	3.0KW	40 42CE10-4 ROW COIL
303	FC-3-2	FC-3-2	16,189	1,912	18,101	3.6	700	5,460	1,600	1.5KW	40 42CE10-3 ROW COIL
302	FC-3-3	FC-3-3	16,189	1,912	18,101	3.6	700	5,460	1,600	1.5KW	40 42CE10-3 ROW COIL
301	FC-3-4	FC-3-4	9,072	1,912	10,984	2.2	400	3,350	982	1.0KW	40 42CE10-3 ROW COIL
300	FC-3-5	FC-3-5	3,085	1,632	4,717	0.9	100	7,960	2,332	3.0KW	30 42CE10-3 ROW COIL
309	FC-3-6	FC-3-6	5,431	966	6,397	1.3	230	1,080	316	0.5KW	20 42CE10-3 ROW COIL
317	FC-3-7	FC-3-7	6,446	1,912	8,358	1.7	270	2,160	633	1.0KW	40 42CE10-3 ROW COIL
319	FC-3-8	FC-3-8	18,698	3,824	22,522	4.5	800	10,095	2,958	3.0KW	40 42CE10-3 ROW COIL
324	FC-3-9	FC-3-9	17,609	1,912	19,521	3.9	740	7,110	2,083	3.0KW	40 42CE10-3 ROW COIL
326	FC-3-10	FC-3-10	33,711	4,780	38,491	7.7	1,400	12,825	3,758	4.0KW	100 42CE12-4 ROW COIL
325	FC-3-11	FC-3-11	11,878	1,912	13,790	2.8	500	4,635	1,358	1.5KW	40 42CE10-3 ROW COIL
322	FC-3-12	FC-3-12	12,052	1,912	13,964	2.8	500	6,615	1,938	2.0KW	40 42CE10-3 ROW COIL
323	FC-3-13	FC-3-13	18,402	2,380	20,782	4.2	800	11,925	3,494	4.0KW	50 42CE10-3 ROW COIL
321	FC-3-14	FC-3-14	18,402	2,380	20,782	4.2	800	11,925	3,494	4.0KW	50 42CE10-3 ROW COIL
314	FC-3-16	FC-3-16	9,587	1,912	11,499	2.3	400	1,912	560	1.0KW	20 42CE10-4 ROW COIL
313	FC-3-17	FC-3-17	24,446	3,280	27,726	5.5	1,000	12,570	3,683	4.0KW	80 42CE10-3 ROW COIL
313	FC-3-18	FC-3-18	16,930	3,824	20,754	4.2	700	9,545	2,797	3.0KW	80 42CE10-3 ROW COIL
305	FC-3-19	FC-3-19	8,177	1,912	10,089	2.0	300	10,260	3,006	3.0KW	0 42CE10-3 ROW COIL
TOTALS			284,278	43,908	328,186	65.7	11,940	140,757	41,232		860
											277 V / 10 / 60 Hz

ALTERNATE BID #2

- HVAC FAN COIL UNITS
IN LIEU OF VAV SYSTEM
- NOTES:
- ONLY WORK PERTAINING TO HVAC SYSTEM IS PART OF ALTERNATE #2. ALL OTHER WORK IS PART OF BASE BID.
- NOTES
- SEE DWG. M-9 "CHILLED WATER RISER DIAGRAM" FOR PIPE SIZES.
 - SEE DWG. M-11 "OUTSIDE AIR CONDENSATE LINES MAY BE RUN DIRECTLY TO DRAIN ON SAME FLOOR WHERE SUFFICIENT DROP IS AVAILABLE. INSULATE ALL PIPING.
 - 5 FT. LONG HVAC FLEX HOSE MAY BE SUBSTITUTED AT DUCT RUN ENDS.
- LEGEND
- HVAC REGISTER 24X24
 - AIR RETURN REGISTER
 - EXHAUST FAN
 - FOXX HVAC FAN COIL UNIT
 - THERMOSTAT NEAR FAN COIL RETURN
 - HVAC FLEX HOSE. NOT TO EXCEED 5' IN LENGTH.
 - WALL AIR RETURN
 - AUTO SHUT-OFF DAMPER
 - FIRE DAMPER
 - CHILLED WATER SUPPLY
 - CHILLED WATER RETURN
 - CONDENSATE DRAIN
 - FRESH AIR
 - THERMOSTAT WIRE



NOTE:
SIZE F. A. DUCT TO ALLOW FOR 1200 FT/ MIN. VELOCITY.

THIRD FLOOR MECHANICAL PLAN
SCALE: 3/16" = 1'-0"

REVISED: 05/17/07/ab
REVISED: 05/07/07/ab
REVISED: 04/26/07/ab
REVISED: 01/22/07
REVISED: 02/23/07 dd

RENOVATE OFFICE BUILDING

DAMMON ENGINEERING, INC.

1095 FLORIDA AVENUE 985-649-5832 SLIDELL, LA. 70458
DAMMONENGINEERING.COM

3RD FLOOR MECHANICAL PLAN

ST. TAMMANY PARISH ADMIN. COMPLEX
520 OLD SPANISH TRAIL
SLIDELL, LOUISIANA

SCALE: AS NOTED

FILE:

JOB NO. 1729

DATE: 1-8-07

SHEET

M-3

OF