

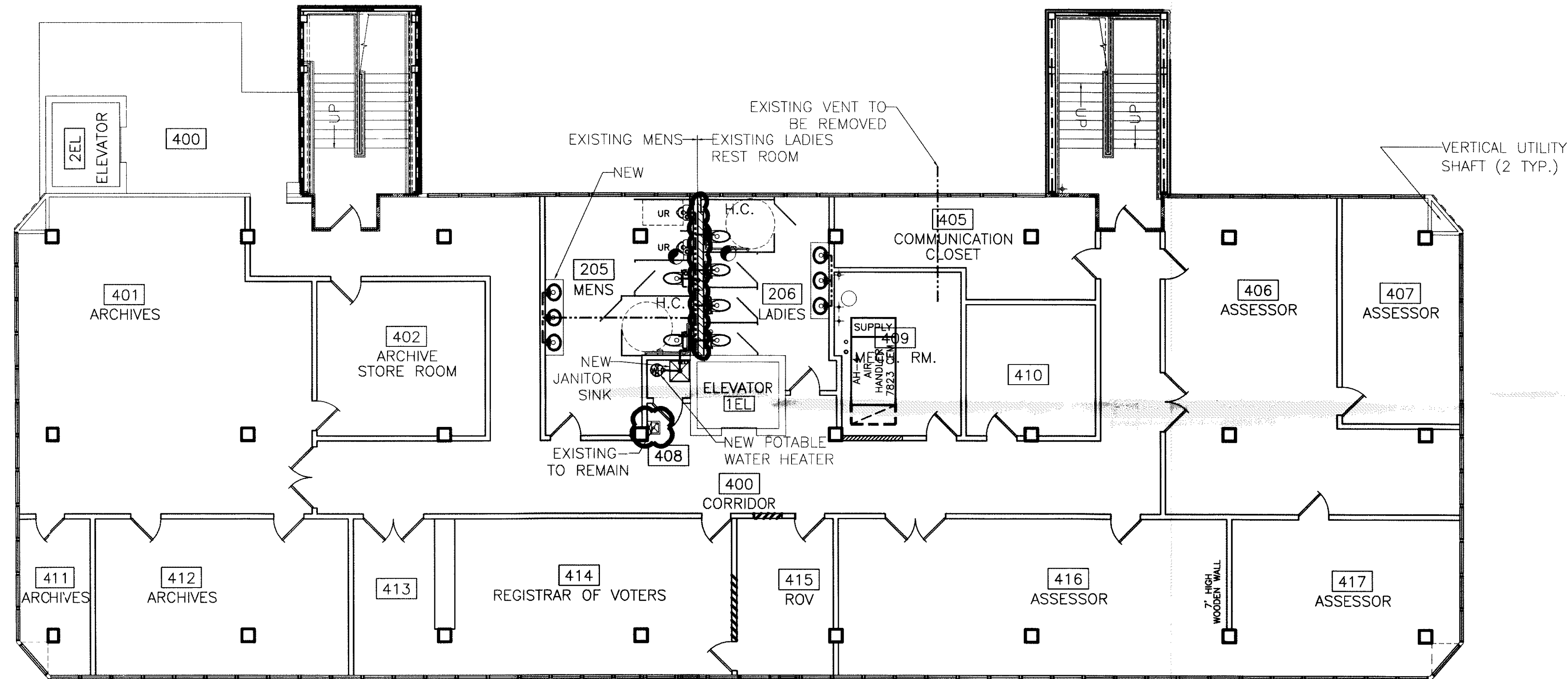
NOTES:

1. NEW VENT LINES SHALL RUN TO N.E. CORNER VERTICAL OPENING TO ROOF.
2. SEE DRAWING P-1 FOR GENERAL NOTES.
3. MENS ROOM WATER CLOSETS, PIPING, PIPING FIXTURES, AND URINALS CAN BE CLEANED AND RE-USED. IF PIPING AND FIXTURES NOT REPLACED, IT MUST BE INSPECTED AND TESTED TO ENSURE IT IS IN PROPER WORKING ORDER.
4. LADIES ROOM WATER CLOSETS (AND PIPING FIXTURE IN HANDICAPPED W.C. ONLY) CAN BE CLEANED AND REUSED. REPLACE ALL OTHER PIPING AND PIPING FIXTURES. IF PIPING AND FIXTURES IN HANDICAPPED STALL NOT REPLACED, IT MUST BE INSPECTED AND TESTED TO ENSURE IT IS IN PROPER WORKING ORDER.
5. REPLACE ALL TOILET SEATS AND SANITARY NAPKIN DISPOSAL BINS.
6. INSTALL OWNER PROVIDED SOAP DISPENSERS AND TOILET PAPER & PAPER TOWEL HOLDERS.

7. INTEGRAL LAVATORY/VANITY: CULTURED MARBLE, SIZE AS SHOWN ON DRAWING A-21.
8. URINALS: TOTO UT447 (OR EQUAL) WITH TOTO TMIINN 1Gpf FLUSH VALVE (OR EQUAL).
9. WATER CLOSETS: TOTO CT705 (CT705L FOR HANDICAP) WITH TOTO TMIINN-32 1.6 Gpf FLUSH VALVE, AMERICAN STANDARD 2234 WITH SLOAN 111 ROYAL 1.6 Gpf FLUSHMETER VALVE (OR EQUAL).
10. TOILET SEATS: KOHLER K-4710-T (MENS), K-4752 (LADIES) (OR EQUALS).
11. PARTITIONS: BOBRICK 1080 SERIES PHENOLIC (OR EQUAL).
12. MIRRORS: SHEET MIRROR 3'-0" HIGH X LENGTH OF VANITY, MOUNTED 3'-4" ABOVE FLOOR.
13. SANITARY NAPKIN DISPOSAL: BOBRICK B354 (LADIES PARTITIONS) (OR EQUAL).

LEGEND

- ☒ - MOP SINK & STAND
- ⊕ - 6 GALLON, 120 VAC, 1 PH. COMPACT WATER HEATER
- - SANITARY SEWER LINE



FOURTH FLOOR PLUMBING PLAN
SCALE: 1/8" = 1'-0"

320959
REVIEWED FOR
STATE FIRE MARSHAL
AS PER REVIEW LETTER
BY: WILLIAM D. JONES, ARCHITECT, CBO
William D. Jones

REESTAMP / LOST PLANS

☁ = ADDENDUM 3 CHANGE

ADDENDUM 3 REVISED: 8/20/07
REVISED: 2/19/07
REVISED: 1/24/07

CONTRACT SET- 10/10/07

4TH FLOOR PLUMBING PLAN
ST. TAMMANY PARISH ADMIN. COMPLEX
520 OLD SPANISH TRAIL
SLIDELL, LOUISIANA

RENOVATE OFFICE BUILDING
DAMMON ENGINEERING, INC.
1095 FLORIDA AVENUE 985-649-5832 SLIDELL, LA. 70458
DAMMONENGINEERING.COM

SCALE: AS NOTED
FILE:
JOB NO. 1729
DATE: 1-8-07
SHEET
P-4
OF