

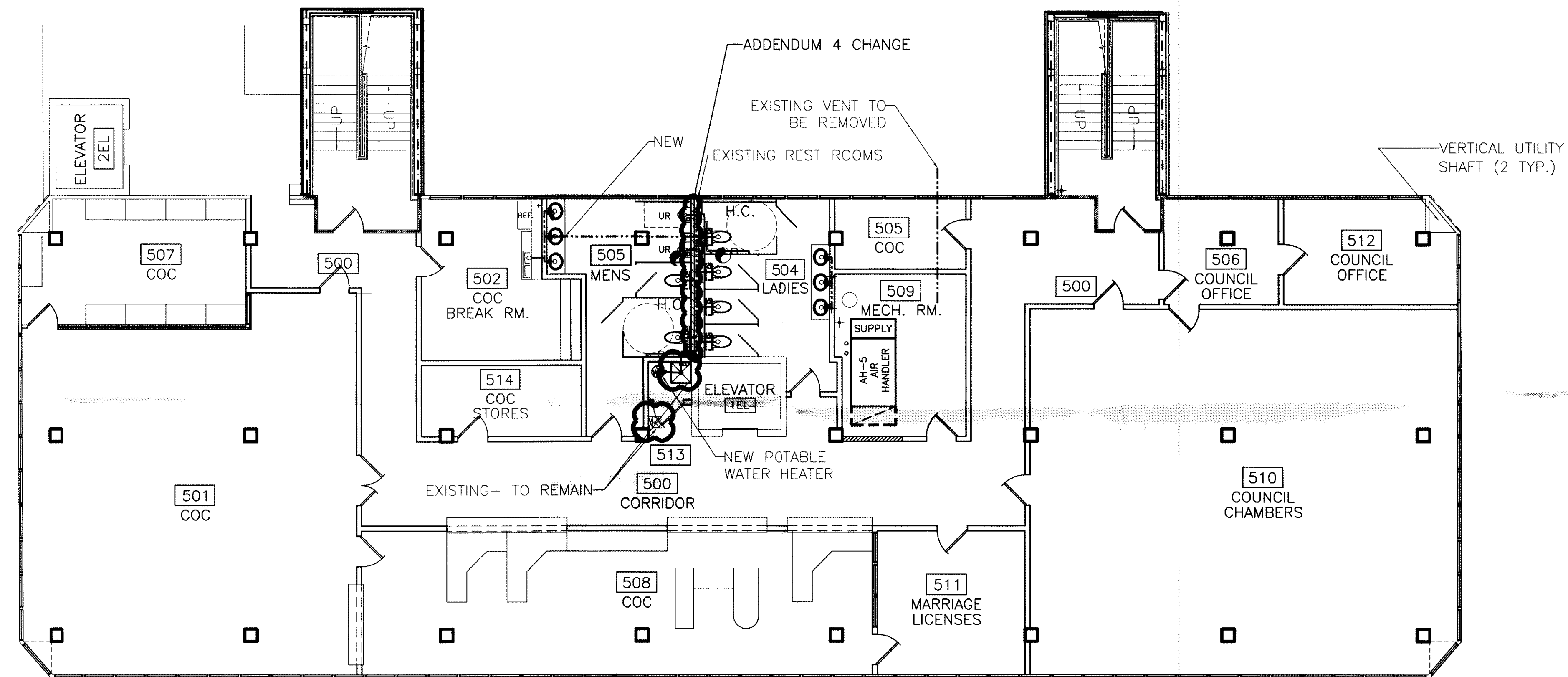
NOTES:

1. NEW VENT LINES SHELL RUN TO N.E. CORNER VERTICAL OPENING TO ROOF.
2. SEE DRAWING P-1 FOR GENERAL NOTES.
3. MENS ROOM WATER CLOSETS, PIPE, AND URINALS CAN BE CLEANED AND RE-USED. REPLACE ALL OTHER FIXTURES.
4. LADIES ROOM WATER CLOSETS AND PIPE CAN BE CLEANED AND REUSED. REPLACE ALL OTHER FIXTURES.
5. REPLACE ALL TOILET SEATS AND SANITARY NAPKIN DISPOSAL BINS.
6. INSTALL OWNER PROVIDED SOAP DISPENSERS AND TOILET PAPER & PAPER TOWEL HOLDERS.

7. INTEGRAL LAVATORY/VANITY: CULTURED MARBLE, SIZE AS SHOWN ON DRAWING A-21.
8. URINALS: TOTO UT447 (OR EQUAL) WITH TOTO TMU1NNC 1Gpf FLUSH VALVE (OR EQUAL).
9. WATER CLOSETS: TOTO CT705 (CT705L FOR HANDICAP) WITH TOTO TMTINN-32 1.6 Gpf FLUSH VALVE, AMERICAN STANDARD 2234 WITH SLOAN 111 ROYAL 1.6 Gpf FLUSHOMETER VALVE (OR EQUAL).
10. TOILET SEATS: KOHLER K-4710-T (MENS), K-4752 (LADIES) (OR EQUALS).
11. PARTITIONS: BOBRICK 1080 SERIES PHENOLIC (OR EQUAL).
12. MIRRORS: SHEET MIRROR 3'-0" HIGH X LENGTH OF VANITY, MOUNTED 3'-4" ABOVE FLOOR.
13. SANITARY NAPKIN DISPOSAL: BOBRICK B354 (LADIES PARTITIONS) (OR EQUAL).

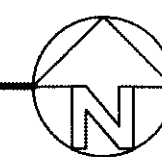
LEGEND

- ☒ - MOP SINK & STAND
- ⊕ - 6 GALLON, 120 VAC, 1 PH. COMPACT WATER HEATER
- - SANITARY SEWER LINE



FIFTH FLOOR PLUMBING PLAN

SCALE: 1/8" = 1'-0"



3 2 0 9 5 9

REVIEWED FOR
STATE FIRE MARSHAL
AS PER REVIEW LETTER
BY: WILLIAM D. JONES, ARCHITECT, CBO

William D. Jones

RE-STAMP / LOST PLANS

☁ = ADDENDUM CHANGE

ADDENDUM 4 REVISD: 10/10/07ab
REVISD: 8/20/07ab
REVISD: 2/19/07
REVISD: 1/24/07

CONTRACT SET-10/10/07

5TH FLOOR PLUMBING PLAN

ST. TAMMANY PARISH ADMIN. COMPLEX
520 OLD SPANISH TRAIL
SLIDELL, LOUISIANA

RENOVATE OFFICE BUILDING

DAMMON ENGINEERING, INC.
1095 FLORIDA AVENUE 985-649-5832 SLIDELL, LA. 70458
DAMMONENGINEERING.COM

SCALE: AS NOTED

FILE:

JOB NO. 1729

DATE: 1-8-07

SHEET

P-5

OF