

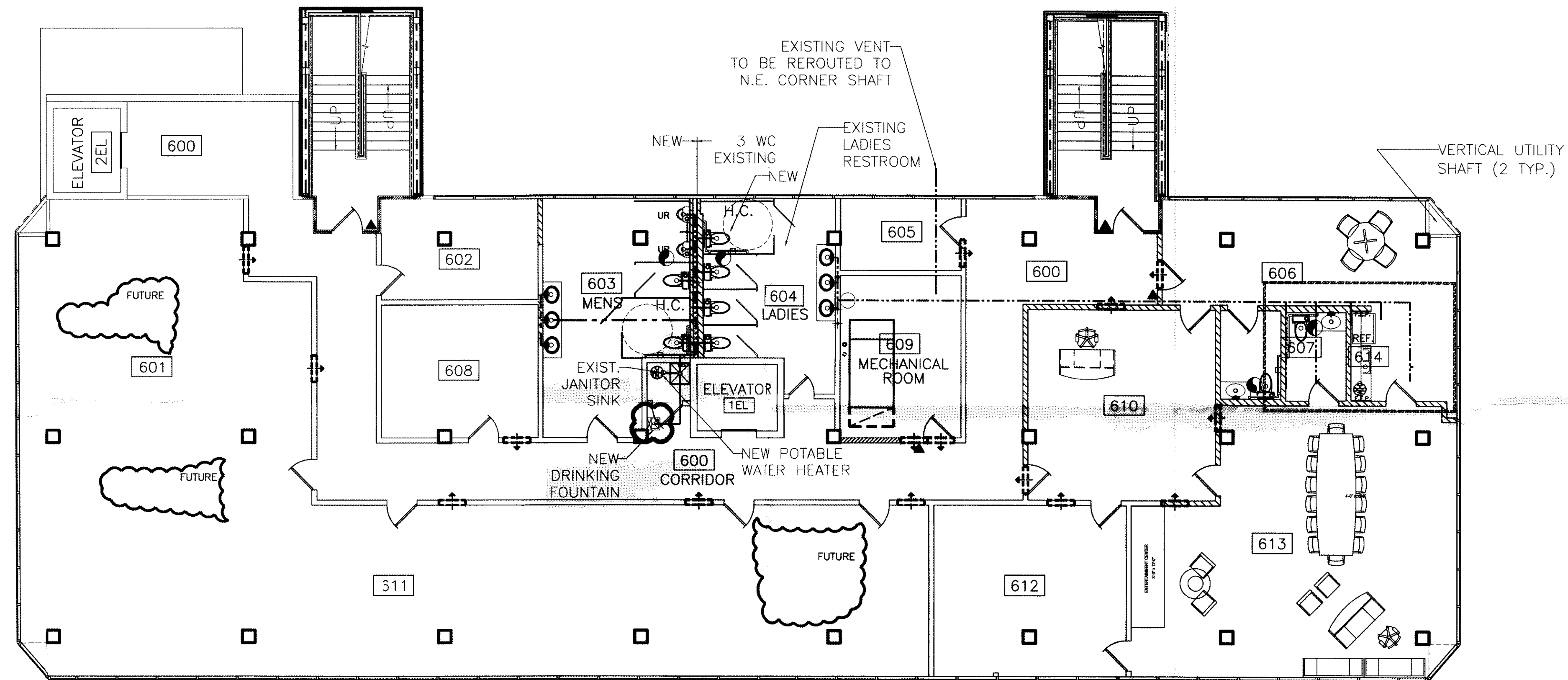
NOTES:

1. THIS IS A NEW RESTROOM AND WILL REQUIRE EXTENDING SERVICES THRU THE WALL, NEW WALL SUPPORTS FOR WALL HUNG FIXTURES, ETC. DRAIN FROM LAVATORIES MUST BE NEW THRU FLOOR AND EXTENDED TO EXISTING SERVICE.
2. NEW VENT LINES SHELL RUN TO N.E. CORNER VERTICAL OPENING TO ROOF.
3. SEE DRAWING P-1 FOR GENERAL NOTES.
4. REPLACE ALL MENS ROOM WATER CLOSETS AND URINALS, PIPING AND PIPING FIXTURES.
5. REPLACE ALL LADIES ROOM WATER CLOSETS, PIPING, AND PIPING FIXTURES.
6. REPLACE ALL TOILET SEATS AND SANITARY NAPKIN DISPOSAL BINS.
7. INSTALL OWNER PROVIDED SOAP DISPENSERS AND TOILET PAPER & PAPER TOWEL HOLDERS.

8. INTEGRAL LAVATORY/VANITY: CULTURED MARBLE, SIZE AS SHOWN ON DRAWING A-21.
9. URINALS: TOTO UT447 (OR EQUAL) WITH TOTO TMU1NNC 1Gpf FLUSH VALVE (OR EQUAL).
10. WATER CLOSETS: TOTO CT705 (CT705L FOR HANDICAP) WITH TOTO TMT1NNC-32 1.6 Gpf FLUSH VALVE, AMERICAN STANDARD 2234 WITH SLOAN 111 ROYAL 1.6 Gpf FLUSHMETER VALVE (OR EQUAL).
11. TOILET SEATS: KOHLER K-4710-T (MENS), K-4752 (LADIES) (OR EQUALS).
12. PARTITIONS: BOBRICK 1080 SERIES PHENOLIC (OR EQUAL).
13. MIRRORS: SHEET MIRROR 3'-0" HIGH X LENGTH OF VANITY, MOUNTED 3'-4" ABOVE FLOOR.
14. SANITARY NAPKIN DISPOSAL: BOBRICK B354 (LADIES PARTITIONS) (OR EQUAL).

LEGEND

- ☒ - MOP SINK & STAND
- ⊗ - 6 GALLON, 120 VAC, 1 PH. COMPACT WATER HEATER
- - SANITARY SEWER LINE



SIXTH FLOOR PLUMBING PLAN  
SCALE: 1/8" = 1'-0"

3 2 0 9 5 9

REVIEWED FOR  
STATE FIRE MARSHAL  
AS PER REVIEW LETTER  
BY WILLIAM D. JONES, ARCHITECT, CBO  
*William D. Jones*

- INDICATES ITEMS CHANGED - 10/17/08
- = ADDENDUM 4 CHANGE

**REStamp/LOST PLANS**

RFP 6 REVISED: 10/17/08ab  
ADDENDUM 4 REVISED: 8/20/07  
REVISED: 2/19/07  
REVISED: 1/24/07

CONTRACT SET- 10/10/07

6TH FLOOR PLUMBING PLAN  
ST. TAMMANY PARISH ADMIN. COMPLEX  
520 OLD SPANISH TRAIL  
SLIDELL, LOUISIANA

RENOVATE OFFICE BUILDING  
**DAMMON ENGINEERING, INC.**  
1095 FLORIDA AVENUE 985-649-5832 SLIDELL, LA. 70458  
DAMMONENGINEERING.COM

SCALE: AS NOTED  
FILE:  
JOB NO. 1729  
DATE: 1-8-07  
SHEET  
**P-6**  
OF