

# FIRE DETECTION AND ALARM SYSTEM

## FOR WALK WITH ME

28660 Montana Dr.  
Locombe/La/70445

### FIRE ALARM SYSTEM SEQUENCE OF OPERATION

#### ALARM

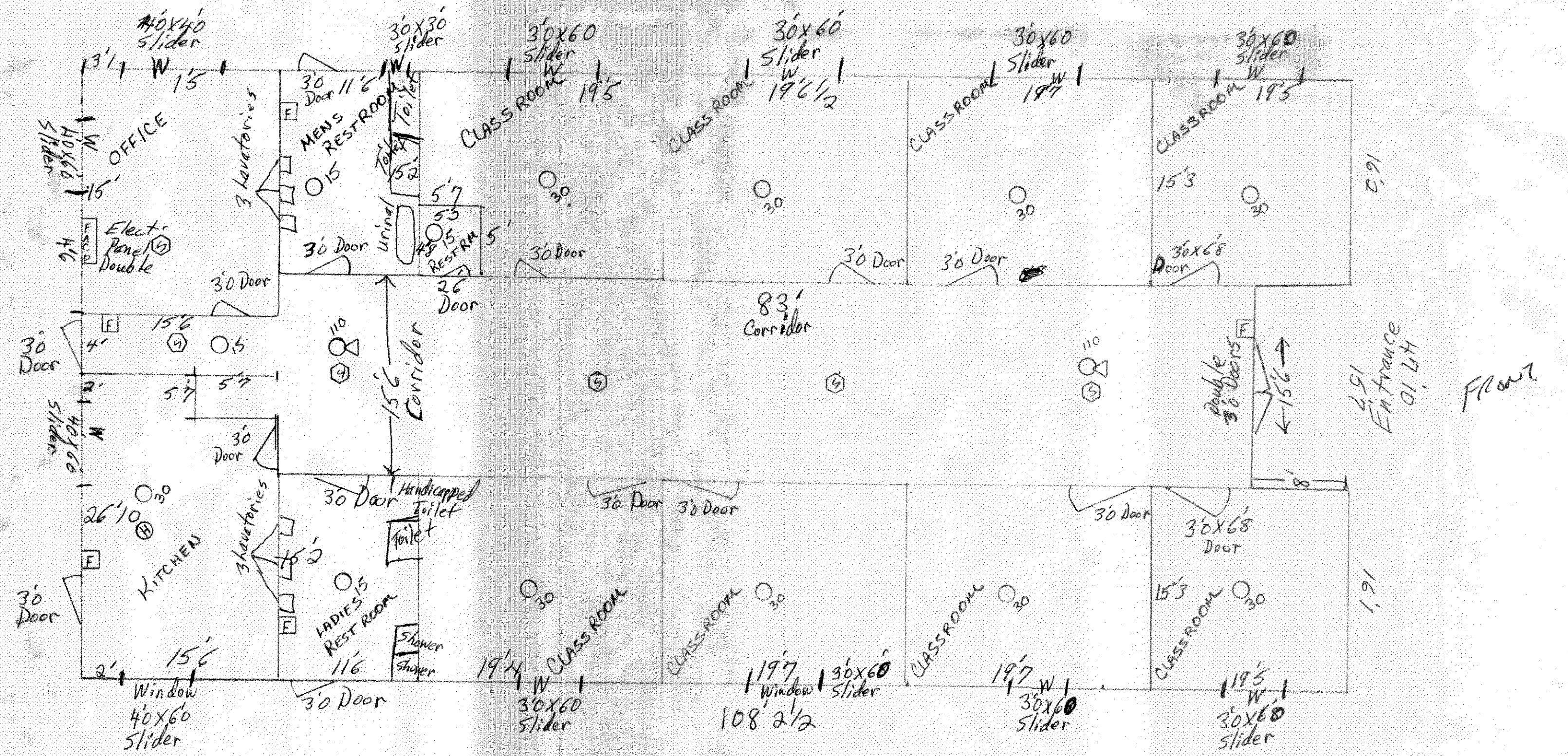
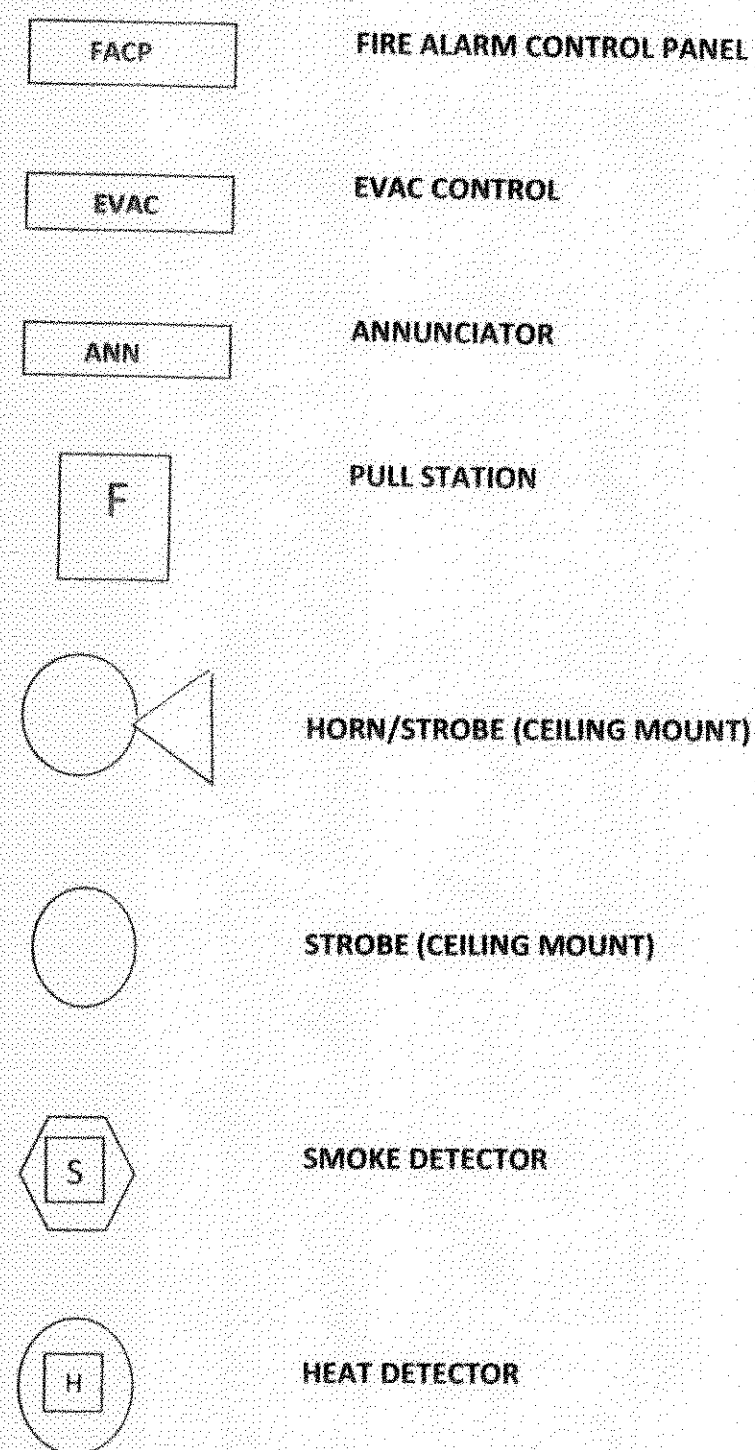
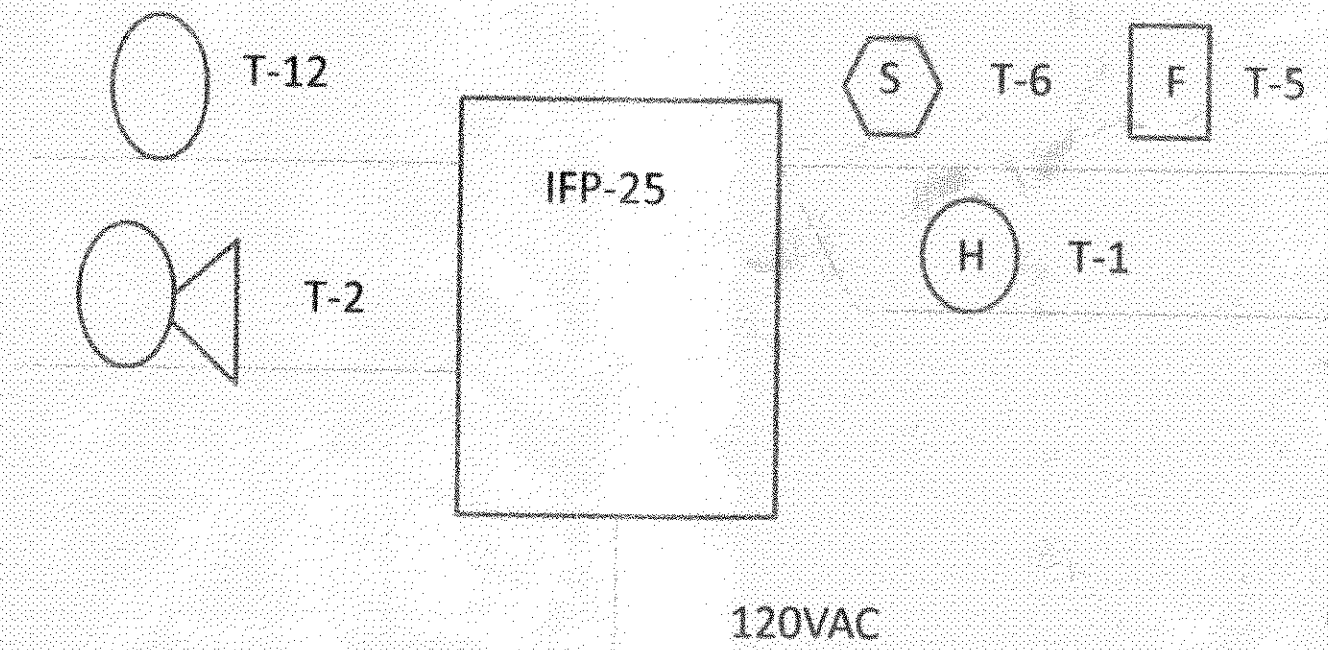
1. Activation of any Pull Station, Smoke, Heat Detector will cause the following actions to occur:
    - A) Turn on the Red L.E.D. Alarm Zone describing the device originating the alarm condition at the Control Panel.
    - B) Activate alarm relay to initiate the transmission of an alarm to Remote Station.
    - C) Activate Alarm Sounding Devices in area for purpose of initiating emergency action.
- Alarm to sound till system silenced at panel. Any subsequent alarm will reactivate the alarm notification devices.

#### TROUBLE

- A) Sound an audible signal at the Fire Control Panel.
- B) Activate trouble relay to initiate the transmission of a trouble to Remote Station.

#### SUPERVISORY

- A) Sound an audible signal at the Fire Control Panel.
- B) Activate supervisory relay to initiate the transmission of a supervisory to Remote Station.



OFFICE  
801 SOUTH OAK STREET  
HAMMOND, LA. 70401

MAILING  
P.O. BOX 415  
PINCHATOULA, LA. 70454

PHONE (985) 419-1040  
FAX (985) 419-1041

F.M. (W) L.O.C.A.  
Tommy Barnes  
2846ARS 985-966-5180

EDUCATION I  
DAYCARES

SCALE: 1/4" = 1'	APPROVED BY:	DRAWN BY: WPA
DATE: 9AUG10	WILLIAM BARNES	REVISED:
DRAWING NUMBER:		90810