

FIRE DETECTION AND ALARM SYSTEM

FOR WALK WITH ME

FIRE ALARM SYSTEM SEQUENCE OF OPERATION

ALARM

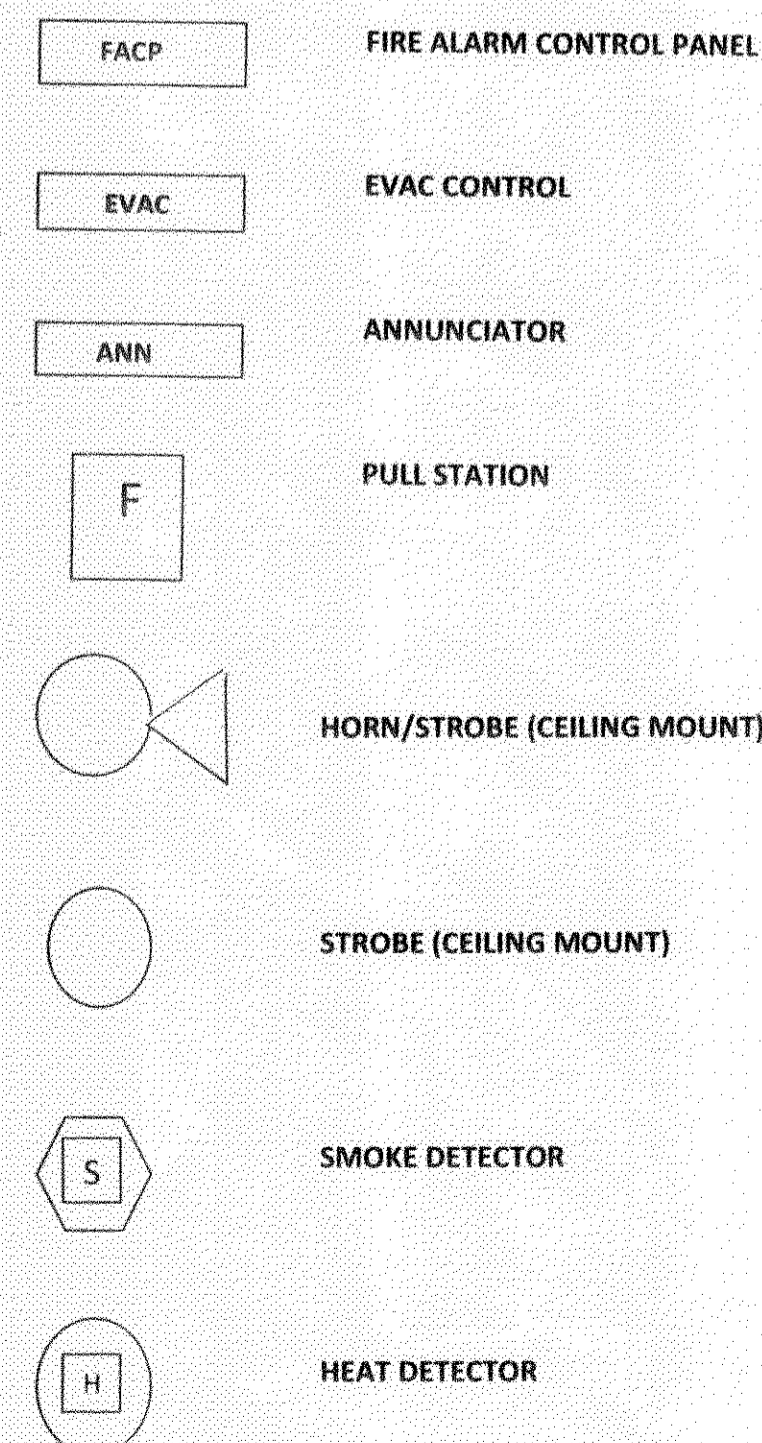
- 1 Activation of any Pull Station, Smoke, Heat Detector will cause the following actions to Occur:
 - A) Turn on the Red L.E.D. Alarm Zone describing the device originating the alarm condition at the Control Panel.
 - B) Activate alarm relay to initiate the transmission of an alarm to Remote Station.
 - C) Activate Alarm Sounding Devices in area for purpose of initiating emergency action.
- Alarm to sound till system silenced at panel. Any subsequent alarm will reactivate the alarm notification devices.

TROUBLE

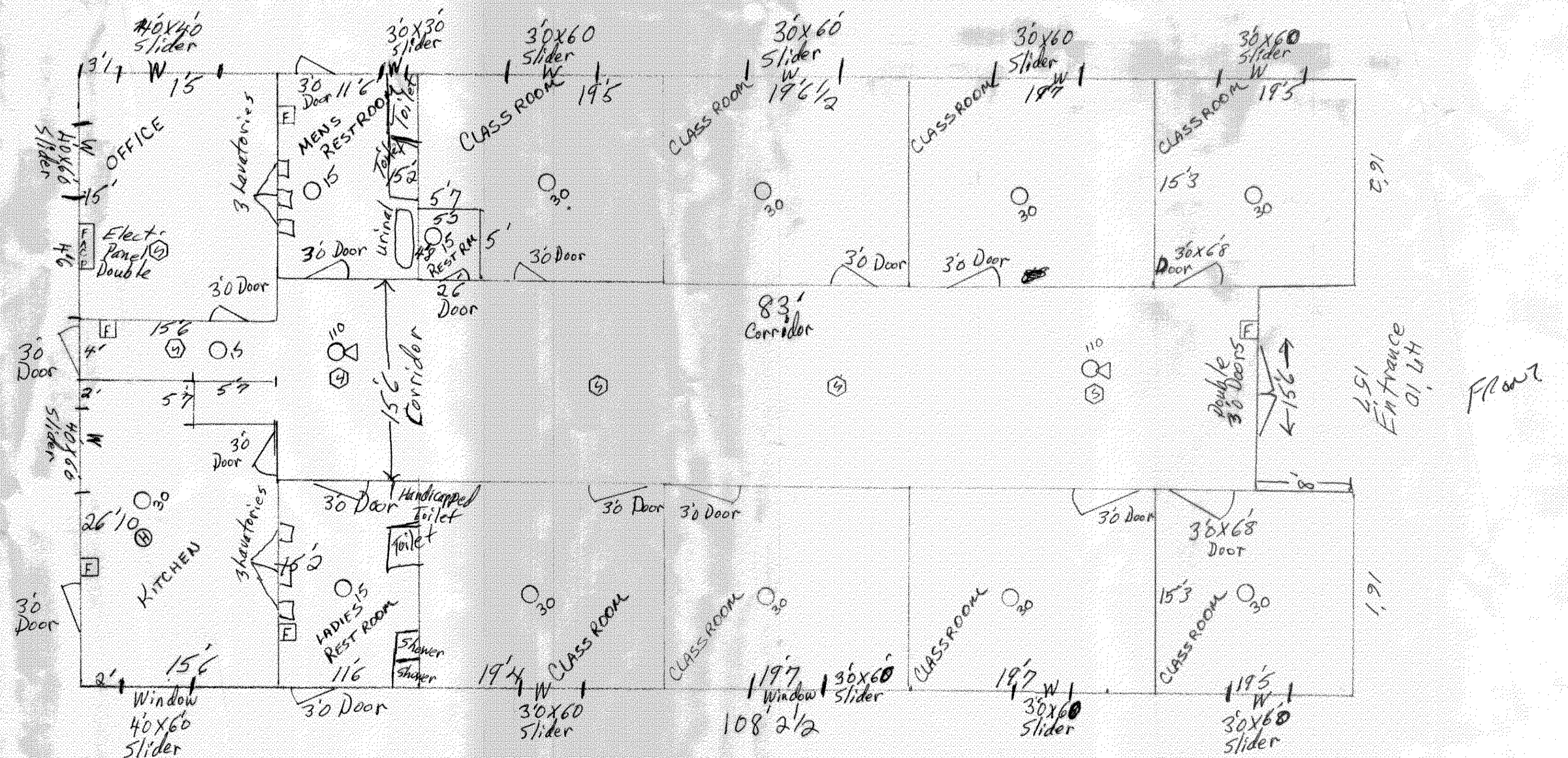
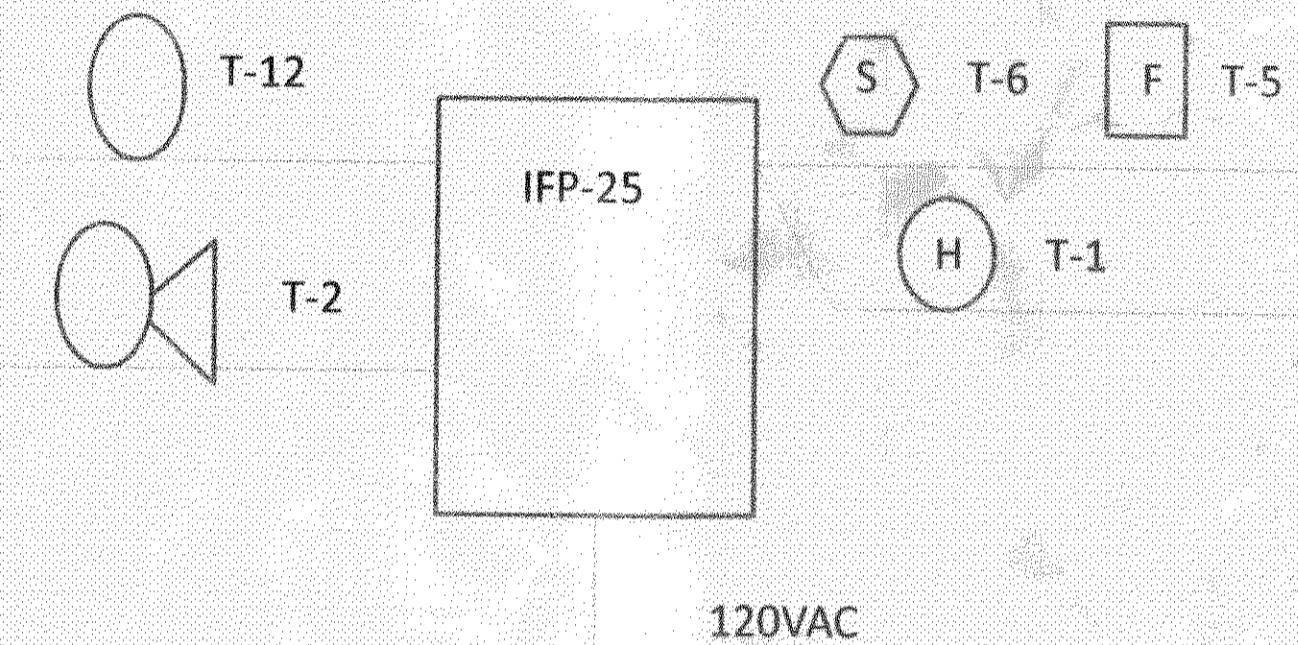
- A) Sound an audible signal at the Fire Control Panel.
- B) Activate trouble relay to initiate the transmission of a trouble to Remote Station.

SUPERVISORY

- A) Sound an audible signal at the Fire Control Panel.
- B) Activate supervisory relay to initiate the transmission of a supervisory to Remote Station.



28660 Montana Dr.
Locombe/La/70445



ADVANTAGE
FIRE SPECIALISTS

OFFICE
801 SOUTH OAK STREET
HAMMOND, LA. 70401

MAILING
P.O. BOX 415
PONCHATOULA, LA. 70454

PHONE (985) 419-1040
FAX (985) 419-1041

F.M. 1 W LOCOMBE
Tommy BARNES
2846 ARS 985-966-5780

EDUCATION I
DRY CARES

SCALE 1/8" = 1'	APPROVED BY	DRAWN BY WPA
DATE 9AUG10	WILLIAM BARNES	REVISED
DRAWING NUMBER		90810