

DAMMON ENGINEERING, INC.

CHIEF ENGINEER
EMMETT DAMMON, P.E.

CHIEF ARCHITECT
ROBERT WILTSE

1095 FLORIDA AVENUE
SLIDELL, LA. 70458
OFFICE: 985-649-5832
FAX: 985-641-5950

WEBSITE:
WWW.DAMMONENGINEERING.COM
EMAIL:
DAMMONENG@BELLSOUTH.NET

ARCHITECTURE
ENGINEERING
STUDIES
PLANNING
INVESTIGATION
EXPERT WITNESS

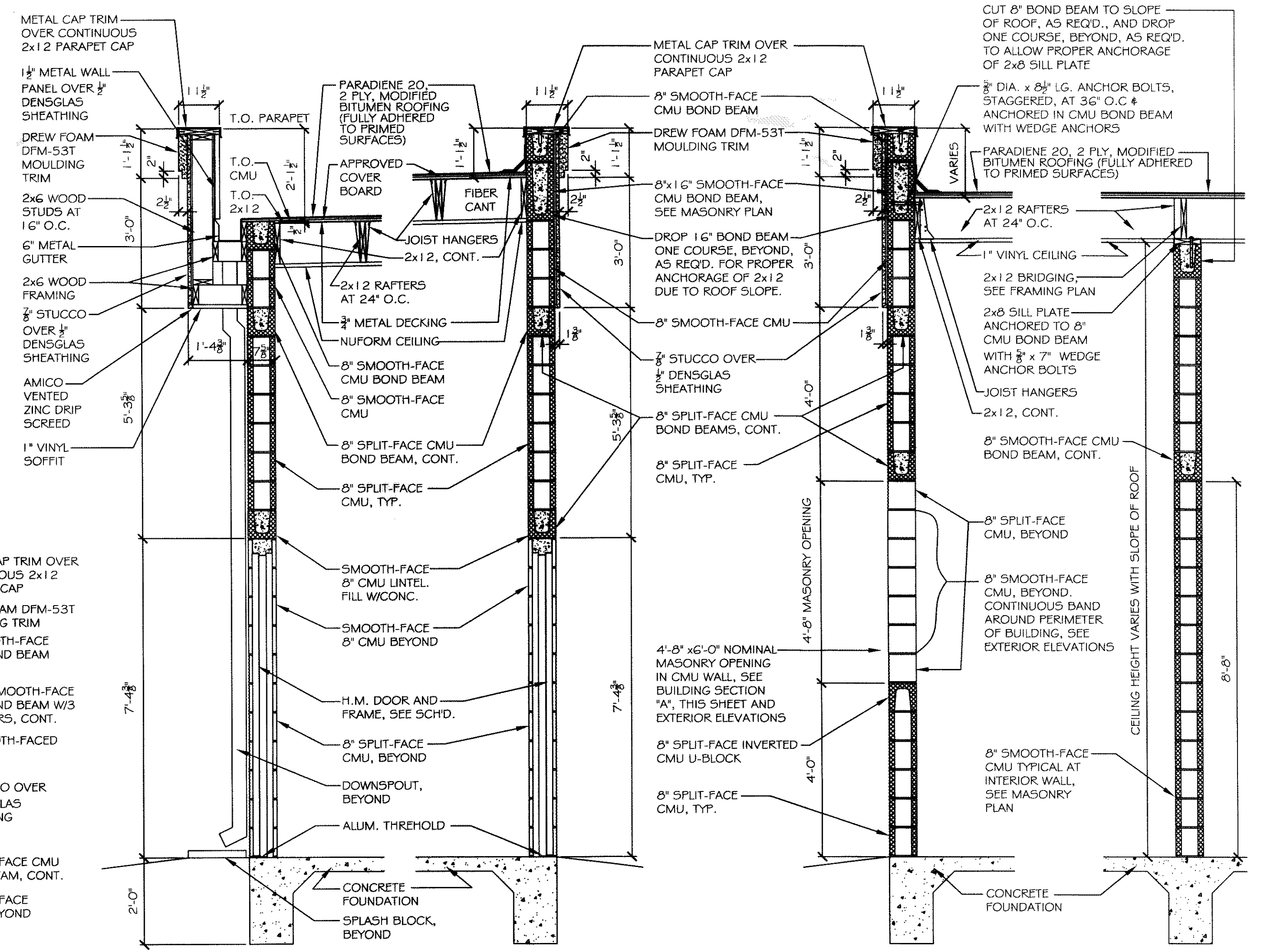
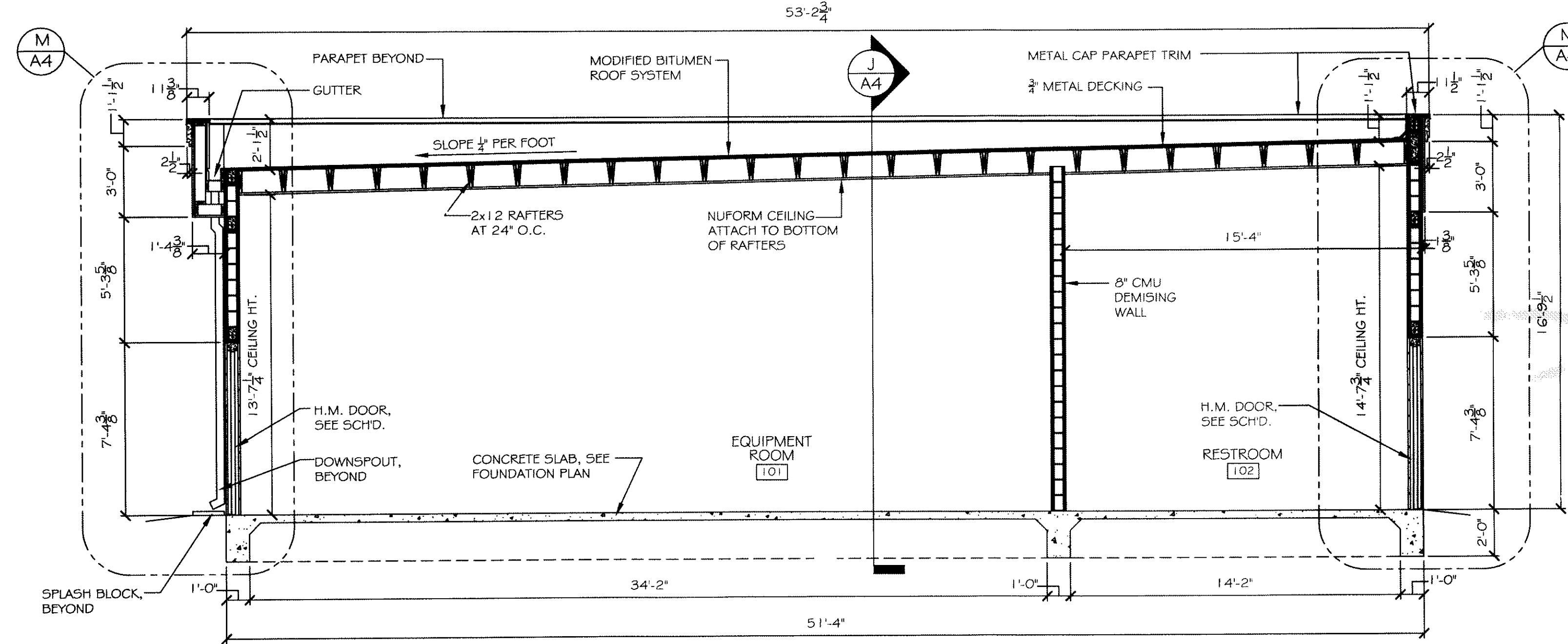
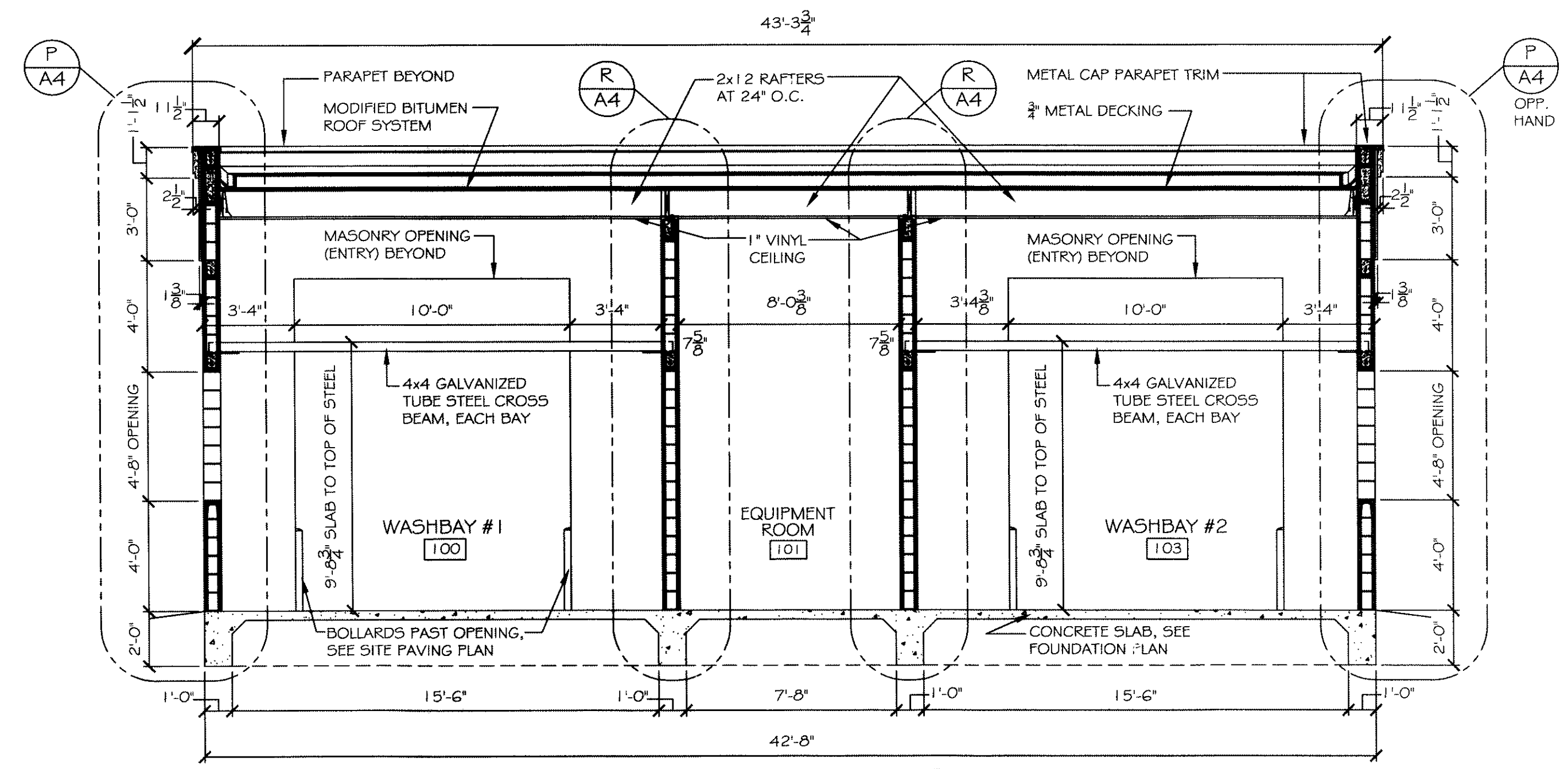
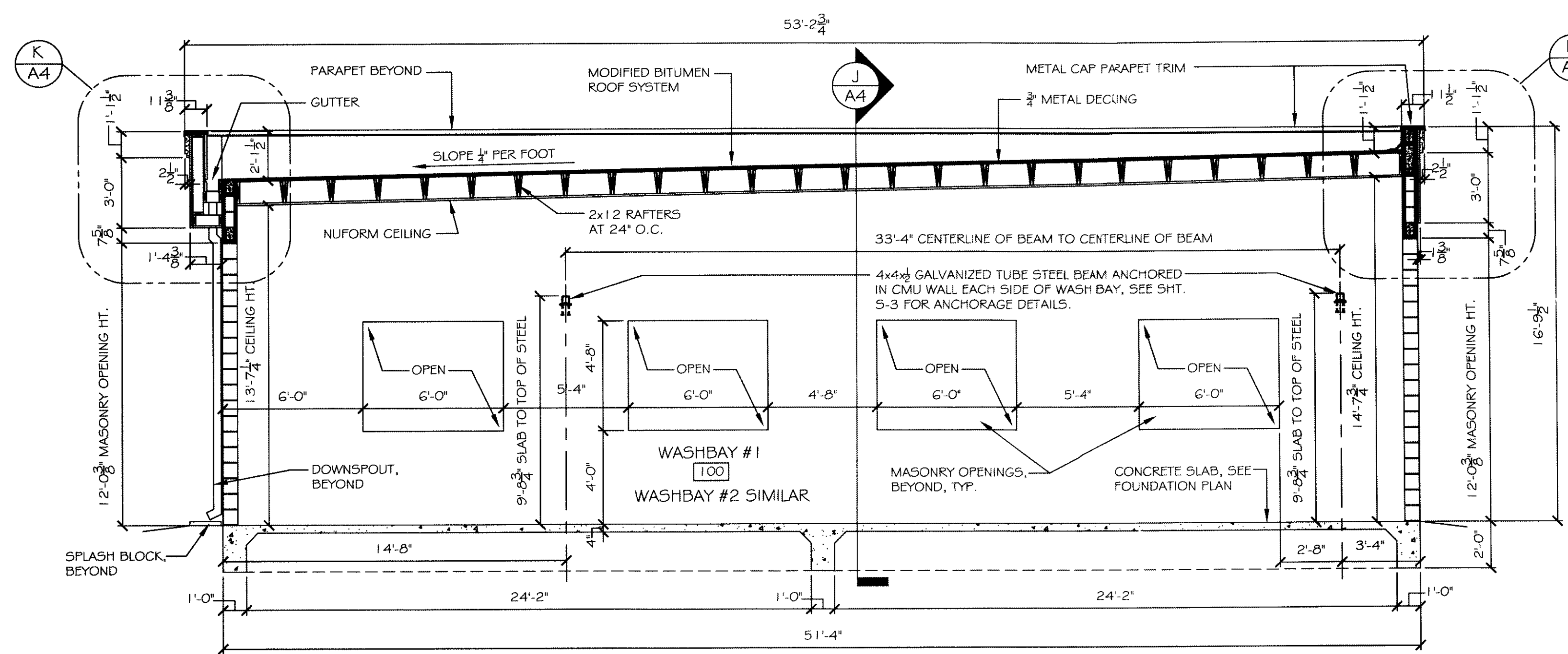
CECIL BOYD'S
CAR WASH
LOT 5A
EAST HALL ST.
SLIDELL, LA

CARWASH
BUILDING &
WALL
SECTIONS

REV:
SCALE: AS NOTED
JOB#: 2074
DATE: 09-13-10
SHEET 14

A-4

OF 18



EXTERIOR STUCCO SPECIFICATIONS:

1. COMPLY WITH ASTM C-841 AND C-842. PROVIDE 3/8" OVERALL THICKNESS ON SELF-FURRING DIAMOND MESH GALVANIZED METAL LATH, 3.4 LB. PER SQUARE YARD, ON "TYVEK" STUCCO WRAP. ATTACH LATH AT "DIMPLES" ONLY, WITH NON-CORROSIVE SCREWS.
2. METAL LATH AND ALL ACCESSORIES TO BE EQUAL TO "AMICO", TO INCLUDE CORNER BEADS, CASING BEADS, BASE SCREEDS, AND CONTROL JOINTS, ALL INSTALLED WITH NON-CORROSIVE SCREWS. ALL ACCESSORIES TO BE ZINC. ALL CORNERS TO BE MITERED.
3. STUCCO TO BE INSTALLED IN THREE COATS; SCRATCH, BROWN, AND FINISH. FINISH COAT TO BE ORIENTAL STUCCO WITH SAND FLOAT FINISH BY U. S. GYPSUM.
4. COMPLY WITH MANUFACTURER'S AND INDUSTRY RECOMMENDATIONS. INSTALL LATH IN ACCORDANCE WITH ASTM C-1063.
5. SUBMIT DATA/CUT SHEETS FOR ALL ITEMS IF REQUIRED.

387276
REVIEWED FOR
STATE FIRE MARSHAL
AS PER REVIEW LETTER
BY WILLIAM D. JONES, ARCHITECT, CBO
William D. Jones

Robert Wiltse