



815 King Place
Shreveport LA 71115

(318) 841-1267 Or (318) 797-4330 Fax

Project: **St. Tammany Administration Building**

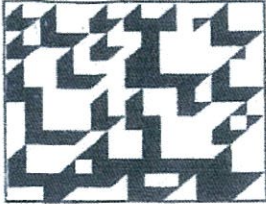
Contractor: Landmark Corp
Architect: Dammon Engineering
Sub/Supplier: **Avallone Architectural Specialties, LLC**
Product /Manufacturer: Interior Signage – "Mohawk"

Sheet 1 of 6

Submitted By: Brian Bernard
Vice President of Business Development

3/4/11

"Serving the Construction Industry Since 1976"



Mohawk Sign Systems, Inc.
Architectural Graphics
P.O. Box 966
Schenectady, NY 12301
(518) 842-5303
FAX (518) 842-5306
E-mail sales@mohawksign.com
Visit <http://www.mohawksign.com>

SIGN SCHEDULE

Company: Avallone Architectural Specialties

Date: 3/4/2011

Purchase Order: 12917
Work Order: 82309-11-02

Project: St. Tammany
Admin.

Should show 52

Series 200A Sand-Carved

Should show 66

Sign Type	QTY	Dimensions	Notes	Symbol
Sign Type A	50	2" X LAR"	COPY TO BE FURNISHED	SYMBOL
Sign Type B	63	8" X 7"	COPY TO BE FURNISHED Inserts by Others	SYMBOL
Sign Type C	1	10" X 8 1/2"	COPY TO BE FURNISHED Inserts by Others	SYMBOL

12 Directories
Required

1. Architect to provide the # of agencies in the building to be listed at each of the floors.
2. Architect to verify the room numbers shown on Mohawks schedule are correct. For example Room #209 is to have a sign that says 2 and has a place to insert the room or name of occupant.

Type "A" has text but no insert

Type A		
Room #	Text	Quantity
100	Storage	1
101	Conference Center	3
104	Women's	①
105	Men's	①
106	Storage	1
108	Storage	1
115	Authorized Personnel Only	1
116	Authorized Personnel Only	1
122	Storage	1
123	Janitor	1
201	Mechanical	1
204	Elevator Equipment	1
205	Men's	①
206	Women's	①
212	Janitor	1
213	Mechanical	1
214	Break Room	1
220	Electrical	1
305	Men's	①
306	Janitor	1
307	Women's	①
308	Mechanical	1
310	Restroom	1
327	Restroom	1
403	Men's	①
404	Women's	①
405	Communication Closet	1
408	Janitor	1
409	Mechanical	1
502	Break Room	1
503	Men's	①
504	Women's	①
509	Mechanical	1
510	Council Chambers	2
513	Janitor	1
601	Authorized Personnel Only	1
602	Authorized Personnel Only	1
603	Men's	①
604	Women's	①
605	Authorized Personnel Only	1
607	Janitor	1
608	Authorized Personnel Only	1
609	Mechanical	1
611	Authorized Personnel Only	3
Pent	Authorized Personnel Only	1

50 62

Room 201 should have two additional signs which read - NO EXIT- , one on each door.

There should be a sign at each door entrance from the stairs similar to the one paper laminated sign presently installed.

Type "B" text and an insert

Type B		
Room #	Text	Quantity
209	2?	1
210	2?	1
211	2? 2F	1
215	2?	1
216	2? 2E	1
217	2?	1
218	2?	1
219	2? 2D	1
301	3?	1
302	3?	1
303	3?	1
304	3?	1
309	3?	1
311	3?	1
312	3?	1
313	3? 3A	2 / 1
314	3?	1
315	3?	2
316	3?	1
317	3?	1
318	3?	2
319	3?	1
320	3?	1
321	3?	1
322	3?	1
323	3?	1
324	3? 3C	1
325	3? 3B	1
326	3?	1
401	4? 4D	1
402	4?	2
406	4?	2
407	4?	1
410	4? 4A	1
411	4?	1
412	4?	2
413	4? 4C	1
414	4?	1
415	4?	2
416	4? 4B	2 / 1
417	4?	1
501	5? 5D	2 / 1
505	5?	1
506	5? 5A	2 / 1
507	5?	1
508	5?	2
511	5? 5C	2 / 1
512	5?	1
514	5?	1
606	6?	1
610	6? 6A	1
208	2A	63 64

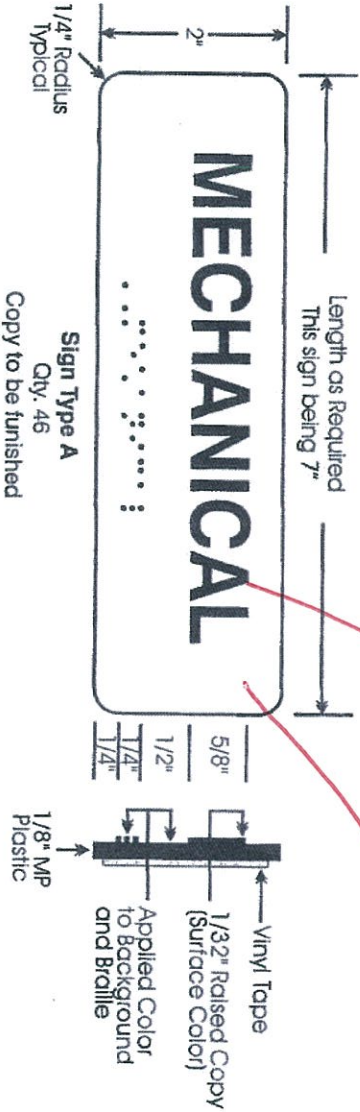
No Signs Required.

*2B
2C
6B
6C
6D* } *Need for future one ea*

*510
5B*

Items circled in the quantities column are presently installed and no additional signage is required.

SEE
SCHEDULE



Mohawk Sign Systems, Inc.®
 Architectural Graphics
 P.O. Box 966
 Schenectady, NY 12301
 518/842-5303, FAX 518/842-5306
 E-Mail: Neal@mohawksign.com
 Plant: 5 Dandreaano Drive
 Amsterdam, NY 12010

This drawing contains confidential information, is an instrument of service and the property of Mohawk Sign Systems. It shall not be used on other projects or for the extension of this project without Mohawk Sign Systems written approval.

For Avallone Architectural Specialties

PO # 12917
 Project St. Tammany Admin.

Drawing # 82309-11-02
 Sheet 1 of 3
 Date 2/28/11
 Drawn By A. Parente

Material MP Plastic
 Color for Copy White or Black
 Applied Color to Background and Braille TBS
 Letterform Helvetica Medium

Border Borderless
 Edge Treatment Square
 Mounting Vinyl Tape
 Corners 1/4" Radius

Format D Series 200A Sand-Carved®



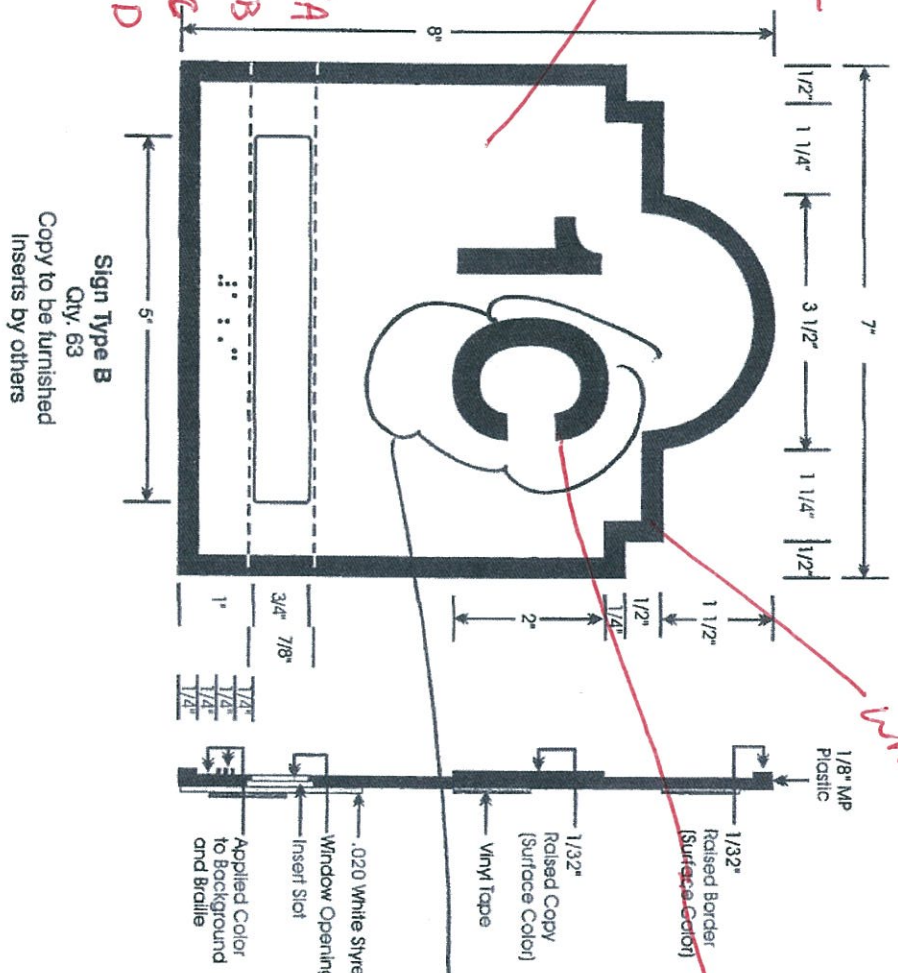
Mohawk Sign Systems, Inc.
 Architectural Graphics
 P.O. Box 966
 Schenectady, NY 12301
 518/642-5303, FAX 518/642-5306
 E-Mail: Neal@mohawksign.com
 Plant: 5 Dandrea Drive
 Amsterdam, NY 12010

For Avallone Architectural Specialties

P.O.# 12917
 Project St. Tammany Admin.

- 2A 3A 4A 5A 6A
- 2B 3B 4B 5B 6B
- 2C 3C 4C 5C 6C
- 2D 4D 5D 6D
- 2E
- 2F

SEE SCHEMATIC



Black

white

white

Sign Type B
 Qty. 63
 Copy to be furnished
 Inserts by others

PLEASE ADVISE
 SEAWARD
 AND SEAWARD

This drawing contains confidential information, is an instrument of service and the property of Mohawk Sign Systems. It shall not be used on other projects or for the extension of this project without Mohawk Sign Systems written approval.

Drawing # 82309-11-02

Sheet 2 Of 3

Date 2/28/11

Drawn By A. Parente

Material MP Plastic

Color for Copy White or Black

Applied Color to Background and Braille TBS

Letterform Helvetica Medium

Format B

Series 200A Sand-Carved

Border 1/4"

Edge Treatment Square

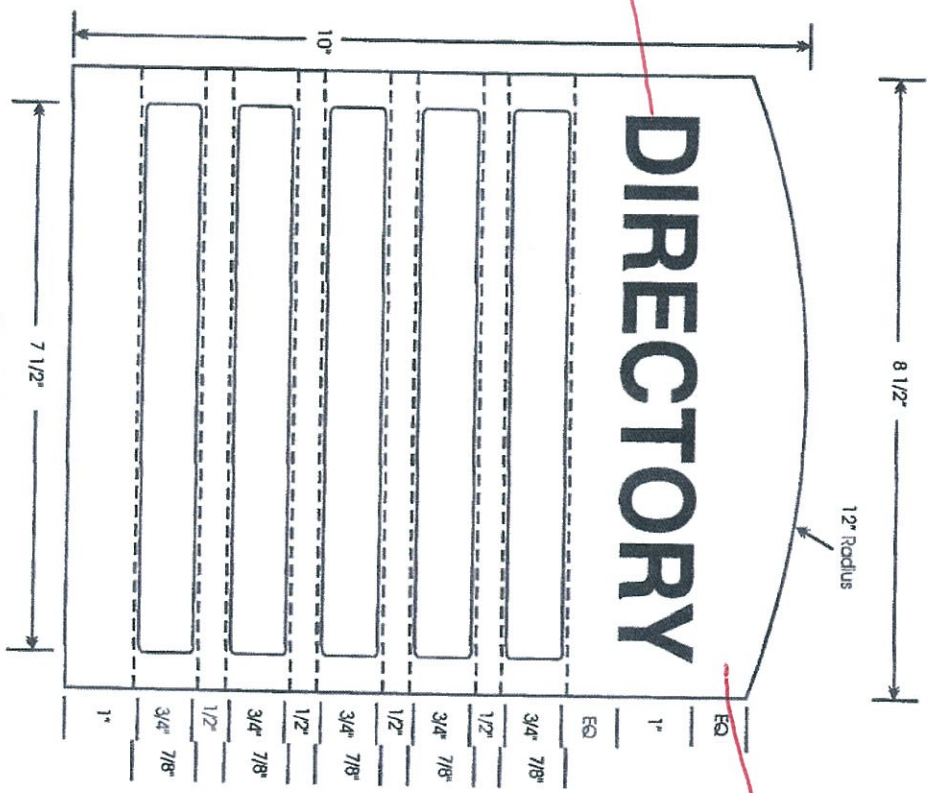
Mounting Vinyl Tape

Corners Custom Arch

Mohawk Sign Systems, Inc. ©
 Architectural Graphics
 P.O. Box 966
 Schenectady, NY 12301
 518/342-5303, FAX 518/842-4506
 E-Mail: Neal@mohawksgn.com
 Plant: 5 Dandrea Drive
 Amsterdam, NY 12010

For **Avallone Architectural Specialties**

P.O.# 12917
 Project St. Tammany Admin.



Sign Type C
 Qty. 1
 Copy to be furnished
 Inserts by others

This drawing contains confidential information, is an instrument of service and the property of Mohawk Sign Systems, Inc. It shall not be used on other projects or for the extension of this project without Mohawk Sign Systems written approval.

Drawing # 82309-11-02
 Sheet 3 of 3
 Date 2/28/11
 Drawn By A. Parente

Material MP Plastic
 Color for Copy White or Black
 And/Or Border White or Black
 Applied Color to Background and Braille TBS
 Letterform Helvetica Medium

Border NA
 Edge Treatment Square
 Mounting Vinyl Tape
 Corners Arch Design

Format D Series **200A Sand-Carved** ®



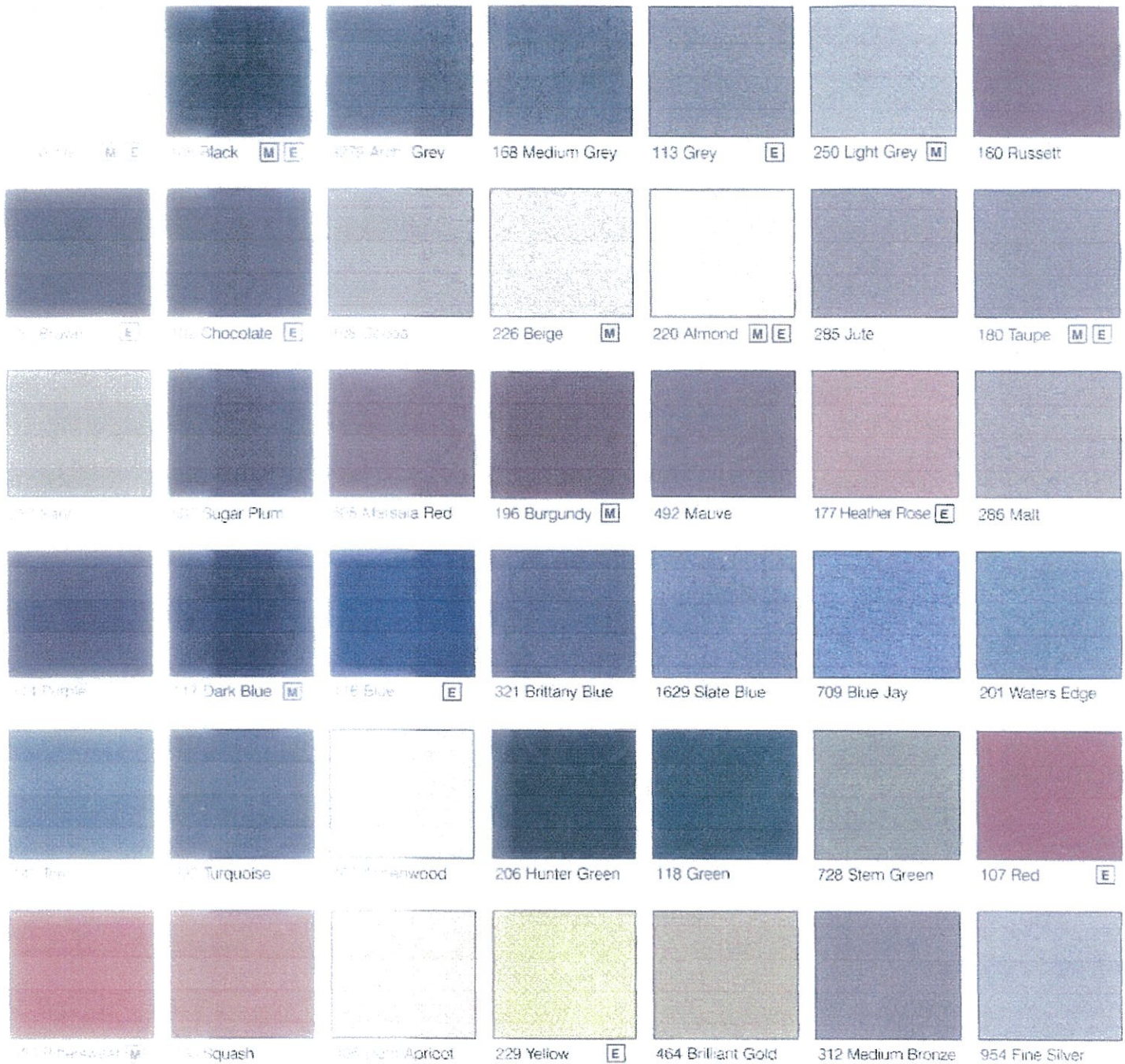
These work for floors 2-6. We will need to show how at least 25 slots for the first floor

White

Black

Painted Background Colors:

All colors listed below are Mohawk standard painted background colors. Mohawk Sign Systems is also capable of formulating additional colors to your desire. Letter colors are indicated by **E** and **M**.



Following the current trend in bold colors, Mohawk has added 10 new colors to our background color line, ranging from the blues, purples and greens. Mohawk is now the industry leader in the number of painted background colors.

NEW Metallic Colors (464, 312, 954) These swatches are simulated metallic colors. We can provide actual metallic paint swatches for more accuracy.

For more information on our products and services, please contact us at 518.842.5303. We are located at 5 Dandrea Drive, Amsterdam, NY 12010-5249. Fax us at 518.842.5303.

Materials

Color	MP (M)		ES (E)	
	1/25"	1/8"	1/16"	1/8"
225	*	*	*	*
105	*	*	*	*
121	*	*	*	*
102	*	*	*	*
226	*	*	*	*
220	*	*	*	*
113	*	*	*	*
250	*	*	*	*

Color	MP (M)			ES (E)	
	1/16"	1/8"	1/4"	1/16"	1/8"
117	*	*	*	*	*
116	*	*	*	*	*
229	*	*	*	*	*
196	*	*	*	*	*
107	*	*	*	*	*
177	*	*	*	*	*
160	*	*	*	*	*
185	*	*	*	*	*



Mohawk Sign Systems, Inc.
A Sign of Quality since 1946

PO Box 986
Schenectady, NY 12301-0986

Plant: 5 Dandrea Drive
Amsterdam, NY 12010-5249
518.842.5303 • FAX: 518.842.5303