

CONTINUOUS SHIM A

" LONG

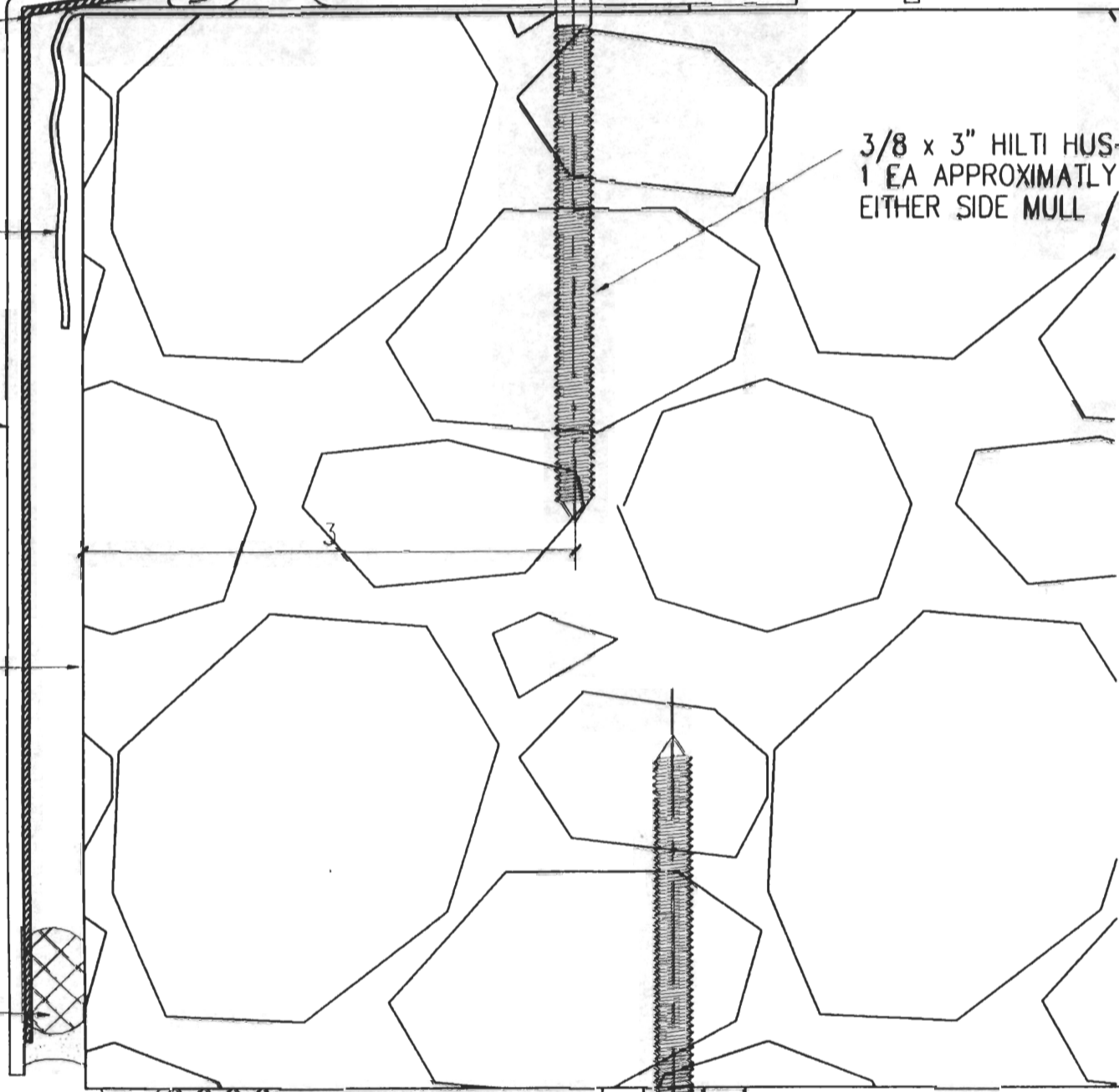
INUOUS

OR SLAB COVER

3/8 x 3" HILTI HUS-H  
1 EA APPROXIMATELY 3"  
EITHER SIDE MULL / JAMB

48"

1/2  
5030



3/8 x 3" HILTI HUS-H  
1 EA APPROXIMATELY 3"  
EITHER SIDE MULL / JAMB  
W/ PIPE SLIP SLEEVE

