

1ST FLOOR HVAC EQUIPMENT - HEATERS						
ROOM NO.	COOLING MBH			HEATING		
	HEATER NO.	SEN	LAT	TOTAL CFM	MBH	KW
110NW	1-1	-	-	-	17	5
110NE	1-2	-	-	-	17	5
110NE	1-3	-	-	-	17	5
					5	N/A

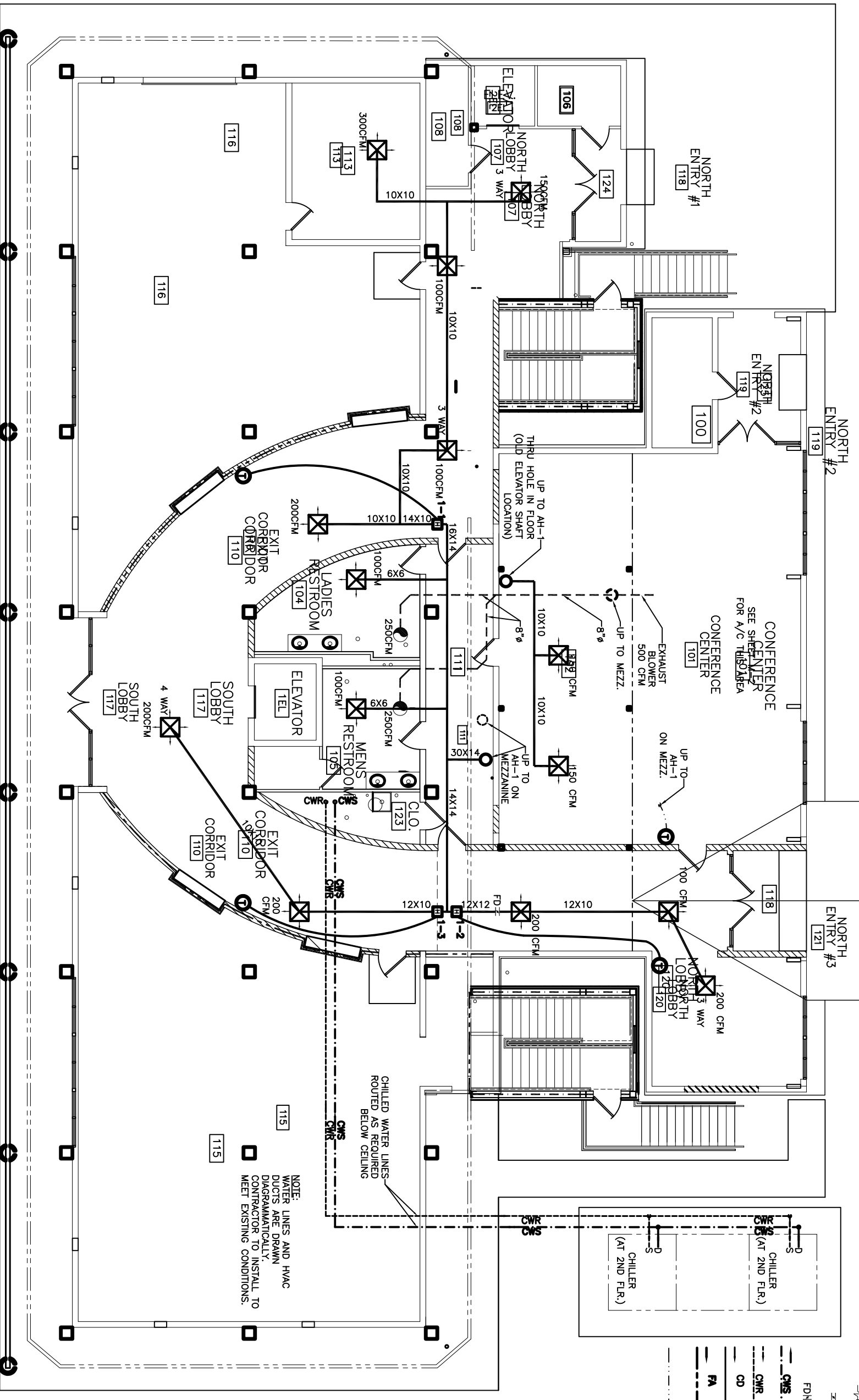
* CARRIER PART NUMBERS OR EQUAL.

NOTES

SEE DWG. M-9 "CHILLED WATER RISER DIAGRAM" FOR PIPE SIZES. SEE DWG. M-11 "OUTSIDE AIR RISER DIAGRAM" FOR DUCT SIZES. CONDENSATE LINES MAY BE RUN DIRECTLY TO DRAIN ON SAME FLOOR WHERE SUFFICIENT DROP IS AVAILABLE. INSULATE ALL PIPING. 5 FT. LONG HVAC FLEX HOSE MAY BE SUBSTITUTED AT DUCT RUN ENDS.

LEGEND

- ELECTRIC DUCT HEATER
- VARIABLE AIR VOLUME DAMPER
- HVAC AIR REGISTER
- 24 X 24, TITUS #TMSA-AA
- EXHAUST BLOWER
- THERMOSTAT
- HVAC FLEX HOSE. NOT TO EXCEED 5' IN LENGTH.
- WALL AIR RETURN
- AUTO SHUT-OFF DAMPER
- FIRE DAMPER
- CHILLED WATER SUPPLY
- CHILLED WATER RETURN
- CONDENSATE DRAIN
- FRESH AIR
- THERMOSTAT WIRE
- RETURN AIR CASIED OPENING IN WALL 32 X 12 (ROOM TO HALL CEILING)



NOTE:
WATER LINES AND HVAC DUCTS ARE DRAWN DIAGRAMMATICALLY. CONTRACTOR TO INSTALL TO MEET EXISTING CONDITIONS.

CHILLED WATER LINES ROUTED AS REQUIRED BELOW CEILING

FIRST FLOOR MECHANICAL PLAN
SCALE: 3/16" = 1'-0"

HVAC REVISED: 11/05/07 ab
REVISED: 06/04/07 ab
REVISED: 05/10/07 ab
REVISED: 05/02/07 ab
REVISED: 04/26/07 ab
REVISED: 03/07/07 ab
REVISED: 02/23/07 ab

CONTRACT SET - 10/10/07

SCALE: AS NOTED FILE: JOB NO. 1729 DATE: 1-8-07 SHEET M-1 OF	RENOVATE OFFICE BUILDING DAMMON ENGINEERING, INC. 1095 FLORIDA AVENUE 985-649-5832 SLIDELL, LA. 70458 DAMMONENGINEERING.COM	1ST FLOOR MECHANICAL PLAN ST. TAMMANY PARISH ADMIN. COMPLEX 520 OLD SPANISH TRAIL SLIDELL, LOUISIANA
---	--	--