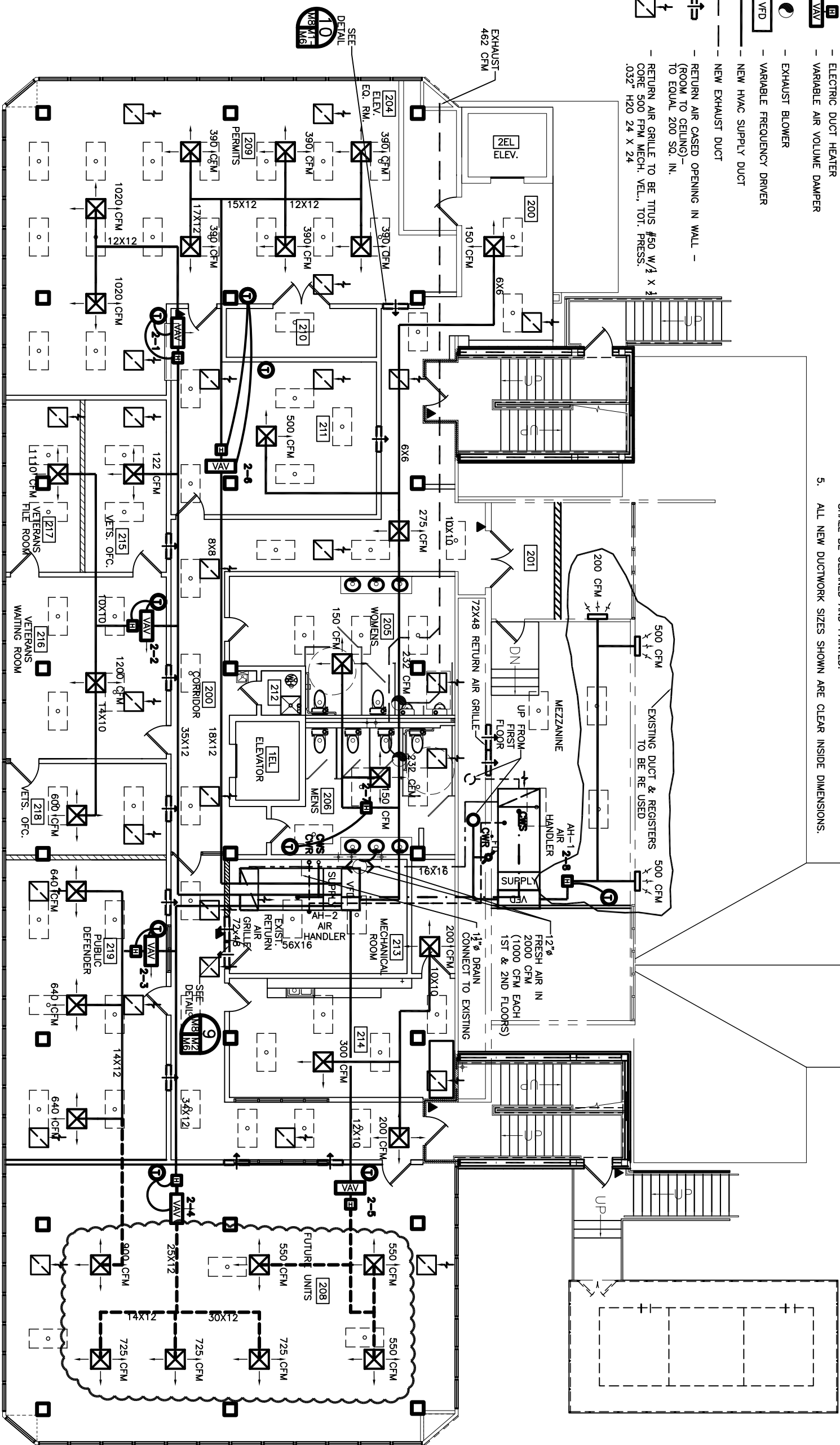


LEGEND

- HVAC AIR REGISTER 24 X 24, TITUS #TMSA-AA
- THERMOSTAT
- ELECTRIC DUCT HEATER
- VARIABLE AIR VOLUME DAMPER
- EXHAUST BLOWER
- VARIABLE FREQUENCY DRIVER
- NEW HVAC SUPPLY DUCT
- NEW EXHAUST DUCT
- RETURN AIR CASSED OPENING IN WALL - (ROOM TO CEILING) - TO EQUAL 200 SQ. IN.
- RETURN AIR GRILLE TO BE TITUS #50 W/1 X 1 CORE 500 FPM MECH. VEL., TOT. PRESS. .032" H2O 24 X 24

- NOTES:**
1. EACH ROOM TO HAVE AN OPENING BETWEEN ROOM CEILING SPACE AND HALL CEILING FOR RETURN AIR (32X12, TYP).
 2. HVAC DUCTS ARE DRAWN DIAGMATICALLY. CONTRACTOR TO INSTALL TO MEET EXISTING CONDITIONS.
 3. WHERE DUCTS AND/OR VAV BOXES ARE SHOWN AS FUTURE, RUN DUCT INTO ROOM AND BLANK OFF. ADJUST AHU BYPASS TO ALLOW RECIRCULATION OF AIR, UNTIL SUCH TIME AS FUTURE UNITS ARE INSTALLED.
 4. EXISTING 72X48 AIR RETURN GRILLE IN WALL OF MECHANICAL ROOM SHALL BE CLEANED AND PAINTED.
 5. ALL NEW DUCTWORK SIZES SHOWN ARE CLEAR INSIDE DIMENSIONS.



2ND FLOOR HVAC EQUIPMENT - VAV

ROOM	VAV NO.	COOL. MBH SEN	CFM	HEATING MBH KW	VAV
209	2-1	42	2,040	7	35E-12
216	2-2	60	2,910	10	35E-14
219	2-3	39	2,820	14	35E-14
208	2-4	46	2,175	11	35E-12

2ND FLOOR HVAC EQUIPMENT - VAV

ROOM	VAV NO.	COOL. MBH SEN	CFM	HEATING MBH KW	VAV
208	2-5	36	1,650	7	35E-10
211	2-6	50	2,340	9	35E-12
206	2-7	-	-	5	-

SECOND FLOOR MECHANICAL PLAN
SCALE: 3/16" = 1'-0"

- HVAC
- REVISED: 11-05-07/ab
 - REVISED: 06-04-07/ab
 - REVISED: 05-10-07/ab
 - REVISED: 05-02-07/ab
 - REVISED: 04-09-07/ab
 - REVISED: 03-30-07/ab
 - REVISED: 03-22-07

CONTRACT SET - 10/10/07

<p>RENOVATE OFFICE BUILDING</p> <p>DAMMON ENGINEERING, INC.</p> <p>1095 FLORIDA AVENUE 985-649-5832 SLIDELL, LA. 70458 DAMMONENGINEERING.COM</p>	<p>2ND FLOOR MECHANICAL PLAN</p> <p>ST. TAMMANY PARISH ADMIN. COMPLEX 520 OLD SPANISH TRAIL SLIDELL, LOUISIANA</p>	<p>SCALE: AS NOTED</p> <p>FILE:</p> <p>JOB NO. 1729</p> <p>DATE: 12-07-06</p> <p>SHEET</p> <p>M-2</p> <p>OF</p>
---	---	--