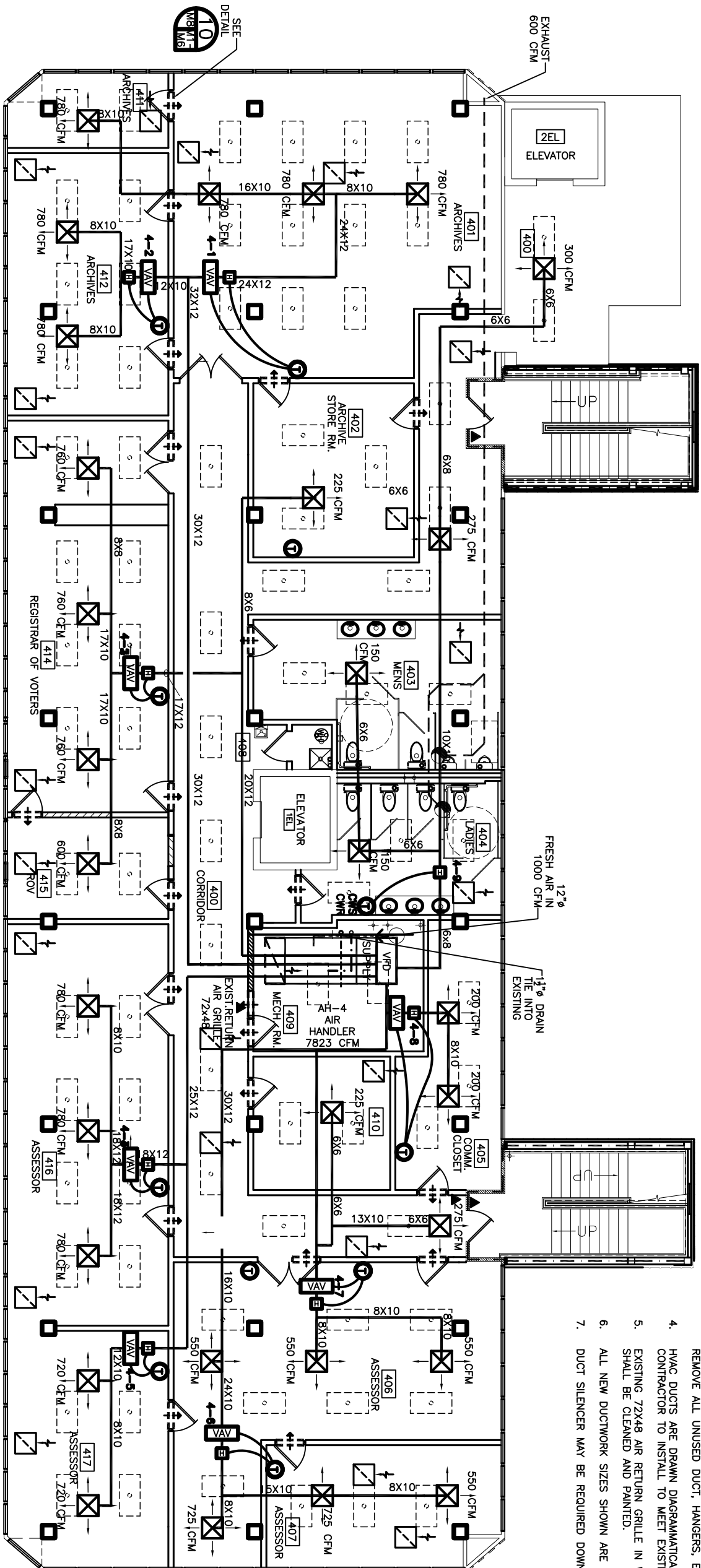


- NOTES:
1. EACH ROOM TO HAVE AN OPENING BETWEEN ROOM CEILING SPACE AND HALL CEILING FOR RETURN AIR (32X12, TYP).
 2. EXISTING DUCTWORK TO BE REUSED SHALL BE CLEANED PRIOR TO USAGE. SEE SPECIFICATIONS.
 3. PORTIONS OF DUCTWORK NOT SHOWN AS BEING REUSED SHALL BE REMOVED, CLEANED AND REUSED IN OTHER LOCATIONS CALLING FOR THAT DUCT SIZE OR SMALLER. INSTALL CLOSURE PLATES AT ALL UNUSED OPENINGS IN DUCT NOT BEING REUSED.
 4. REMOVE ALL UNUSED DUCT, HANGERS, ETC. WHEN COMPLETE.
 5. HVAC DUCTS ARE DRAWN DIAGRAMMATICALLY. CONTRACTOR TO INSTALL TO MEET EXISTING CONDITIONS.
 6. EXISTING 72X48 AIR RETURN GRILLE IN WALL OF MECHANICAL ROOM SHALL BE CLEANED AND PAINTED.
 7. ALL NEW DUCTWORK SIZES SHOWN ARE CLEAR INSIDE DIMENSIONS.
 8. DUCT SILENCER MAY BE REQUIRED DOWNSTREAM OF VAV.



FOURTH FLOOR MECHANICAL PLAN
SCALE: 3/16" = 1'-0"

LEGEND

- NEW HVAC SUPPLY DUCT
- NEW EXHAUST DUCT
- THERMOSTAT
- ELECTRIC DUCT HEATER
- VARIABLE AIR VOLUME DAMPER
- EXHAUST BLOWER
- VARIABLE FREQUENCY DRIVER
- RETURN AIR GRILLE TO BE TITUS #50 W/4 X 1/2 CORE HVAC 500 FPM MECH. VELL., TOT. PRESS. .032" H2O 24 X 24
- RETURN AIR CASIED OPENING IN WALL - (ROOM TO CEILING) - TO EQUAL 200 SQ. IN.

4TH FLOOR HVAC EQUIPMENT - VAV & HEATERS						
ROOM	VAV NO.	COOL. MBH	COOL. CFM	HEATING MBH	KW	* VAV
401	4-1	67	3,120	10	3	35E-14
412	4-2	34	1,560	7	2	35E-10
414	4-3	62	2,880	11	3	35E-14
416	4-4	50	2,340	9	3	35E-12
417	4-5	31	1,440	5	2	35E-10
418	4-6	43	2,000	7	2	35E-12
409	4-7	24	1,100	4	1	35E-9
404	4-8	9	400	5	1	35E-6
404	4-9	.	.	5	5	N/A

*-CARRIER PART NUMBERS OR EQUAL.

CONTRACT SET- 10/10/07

	<p>RENOVATE OFFICE BUILDING</p> <p>DAMMON ENGINEERING, INC.</p> <p>1095 FLORIDA AVENUE 985-649-5832 SLIDELL, LA. 70458 DAMMONENGINEERING.COM</p>	<p>4TH FLOOR MECHANICAL PLAN</p> <p>ST. TAMMANY PARISH ADMIN. COMPLEX 520 OLD SPANISH TRAIL SLIDELL, LOUISIANA</p>
<p>SCALE: AS NOTED</p> <p>FILE:</p> <p>JOB NO. 1729</p> <p>DATE: 12-07-06</p> <p>SHEET</p> <p style="font-size: 2em; font-weight: bold;">M-4</p> <p>OF</p>		