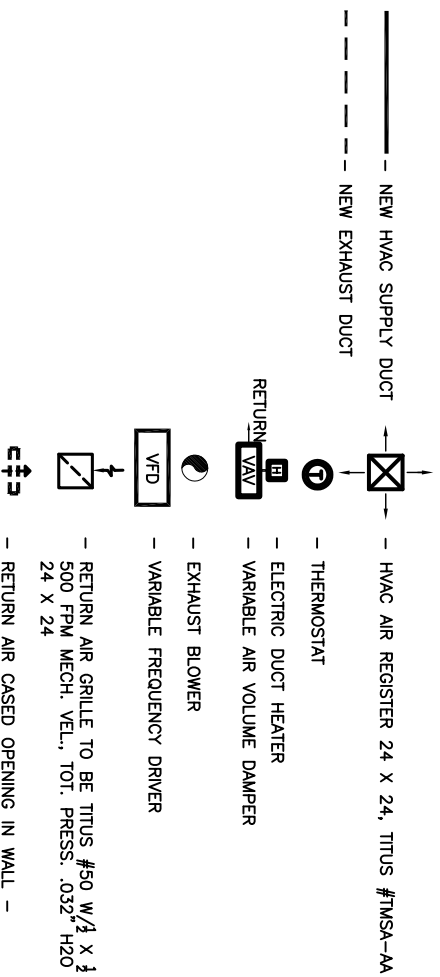


FIFTH FLOOR MECHANICAL PLAN
SCALE: 3/16" = 1'-0"

LEGEND



- HVAC AIR REGISTER 24 X 24, TITUS #TMSA-AA
- THERMOSTAT
- ELECTRIC DUCT HEATER
- VARIABLE AIR VOLUME DAMPER
- EXHAUST BLOWER
- VARIABLE FREQUENCY DRIVER
- RETURN AIR GRILLE TO BE TITUS #50 W/1/2 X 1/2 CORE
- 500 FPM MECH. VELL. TOT. PRESS. .032 H2O 24 X 24
- RETURN AIR CASIED OPENING IN WALL - (ROOM TO CEILING) - TO EQUAL 200 SQ. IN.

- NOTES:
1. EACH ROOM TO HAVE AN OPENING BETWEEN ROOM CEILING SPACE AND HALL CEILING FOR RETURN AIR (32X12, TYP).
 2. HVAC DUCTS ARE DRAWN DIAGRAMMATICALLY. CONTRACTOR TO INSTALL TO MEET EXISTING CONDITIONS.
 3. EXISTING 72X48 AIR RETURN GRILLE IN WALL OF MECHANICAL ROOM SHALL BE CLEANED AND PAINTED.
 4. ALL NEW DUCTWORK SIZES SHOWN ARE CLEAR INSIDE DIMENSIONS.

5TH FLOOR HVAC EQUIPMENT - VAV & HEATERS						
ROOM	VAV NO.	COOL. MBR CFM	HEATING MBR KW	VAV		
501	5-1	8	400	3	1	35E-6
507	5-2	13	620	2	1	35E-7
502	5-3	60	2,800	8	2	35E-14
511	5-4	43	2,000	8	2	35E-12
511	5-5	85	3,960	15	4	35E-16
510	5-6	56	2,580	9	3	35E-14
510	5-7	47	2,180	8	2	35E-12
E.CORR.	5-8	26	1,200	8	2	35E-9
503	5-9	6	300	7	2	N/A

* CARRIER PART NUMBERS OR EQUAL.

CONTRACT SET - 10/10/07

HVAC REVISED: 11-05-07ab
 REVISED: 10-10-07ab
 REVISED: 06-04-07ab
 REVISED: 05-10-07ab
 REVISED: 05-02-07ab
 REVISED: 04-09-07ab
 REVISED: 03-30-07ab
 REVISED: 03-22-07

SCALE: AS NOTED	FILE:	JOB NO.	DATE: 10-24-06	SHEET
				M-5
				OF

RENOVATE OFFICE BUILDING
DAMMON ENGINEERING, INC.
 1095 FLORIDA AVENUE 985-649-5832 SLIDELL, LA. 70458
 DAMMONENGINEERING.COM

5TH FLOOR MECHANICAL PLAN
 ST. TAMMANY PARISH ADMIN. COMPLEX
 520 OLD SPANISH TRAIL
 SLIDELL, LOUISIANA