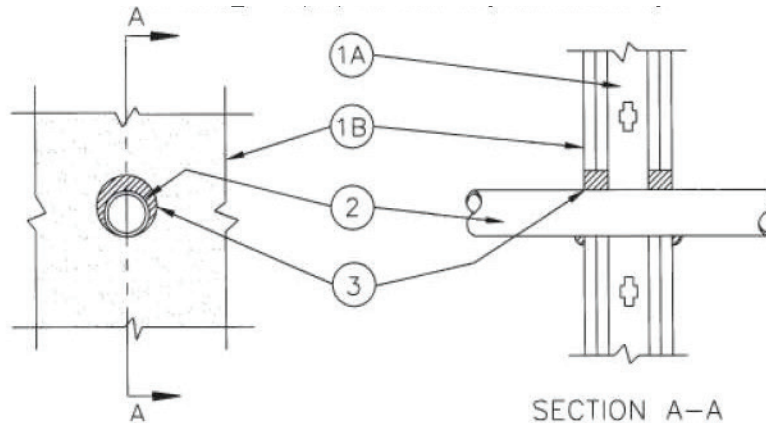




**System No. W-L-2384**

F Rating – 1, 2, 3 & 4 Hr (See Item 1)

T Rating – 1, 2, 3 & 4 Hr (See Item 1)



1. **Wall Assembly** – The 1, 2, 3 or 4 hr fire-rated gypsum wallboard/stud wall assembly shall be constructed of the materials and in the manner specified in the individual U300 or U400 Series Wall and Partition Designs in the UL Fire Resistance Directory and shall include the following construction features:
  - A. **Studs** – Wall framing may consist of either wood studs or steel channel studs. Wood studs to consist of nom 2 by 4 in. lumber spaced 16 in. OC. Steel studs to be min 3-5/8 in. wide and spaced max 24 in. OC.
  - B. **Gypsum Board\*** – The gypsum board type, thickness, number of layers, fasteners type and sheet orientation shall be as specified in the individual U300 or U400 Series Design in the UL Fire Resistance Directory. Max diam of opening is 3-1/8 in.

**The hourly F and T Ratings of the firestop system are equal to the hourly fire rating of the assembly in which it is installed.**
2. **Through Penetrants** – One nonmetallic pipe or tubing installed either concentrically or eccentrically within the firestop system. Pipe or tubing to be rigidly supported on both sides of wall assembly. The following types and sizes of nonmetallic pipes or tubing may be used:
  - A. **Chlorinated Polyvinyl Chloride (CPVC) Pipe** – Nom 2 in. diam (or smaller) SDR 11 CPVC pipe for use in closed (process or supply) piping systems. The annular space between pipe and periphery of opening shall be min 1/4 in. to max 1/2 in.
  - B. **Crosslinked Polyethylene (PEX) Tubing** - Nom 1-1/2 in. diam (or smaller) SDR 9 PEX tubing for use in closed (process or supply) piping systems. The annular space between tubing and periphery of opening shall be min 1/4 in. to max 3/8 in.
  - C. **Polyvinyl Chloride (PVC) Pipe** - Nom 2 in. diam (or smaller) Schedule 40 solid core or cellular core PVC pipe for use in closed (process or supply) piping system. The annular space between pipe and periphery of opening shall be min 1/4 in. to max 1/2 in.
3. **Fill, Void or Cavity Material\* – Sealant** – Min 5/8 in. thickness of fill material for 1 hr rated wall assemblies and min 1 in. thickness of fill material for 2, 3 or 4 hr rated wall assemblies, applied within the annulus, flush with both surfaces of wall.

GRABBER CONSTRUCTION PRODUCTS INC – GrabberGard IFC

\*Bearing the UL Classification Marking

