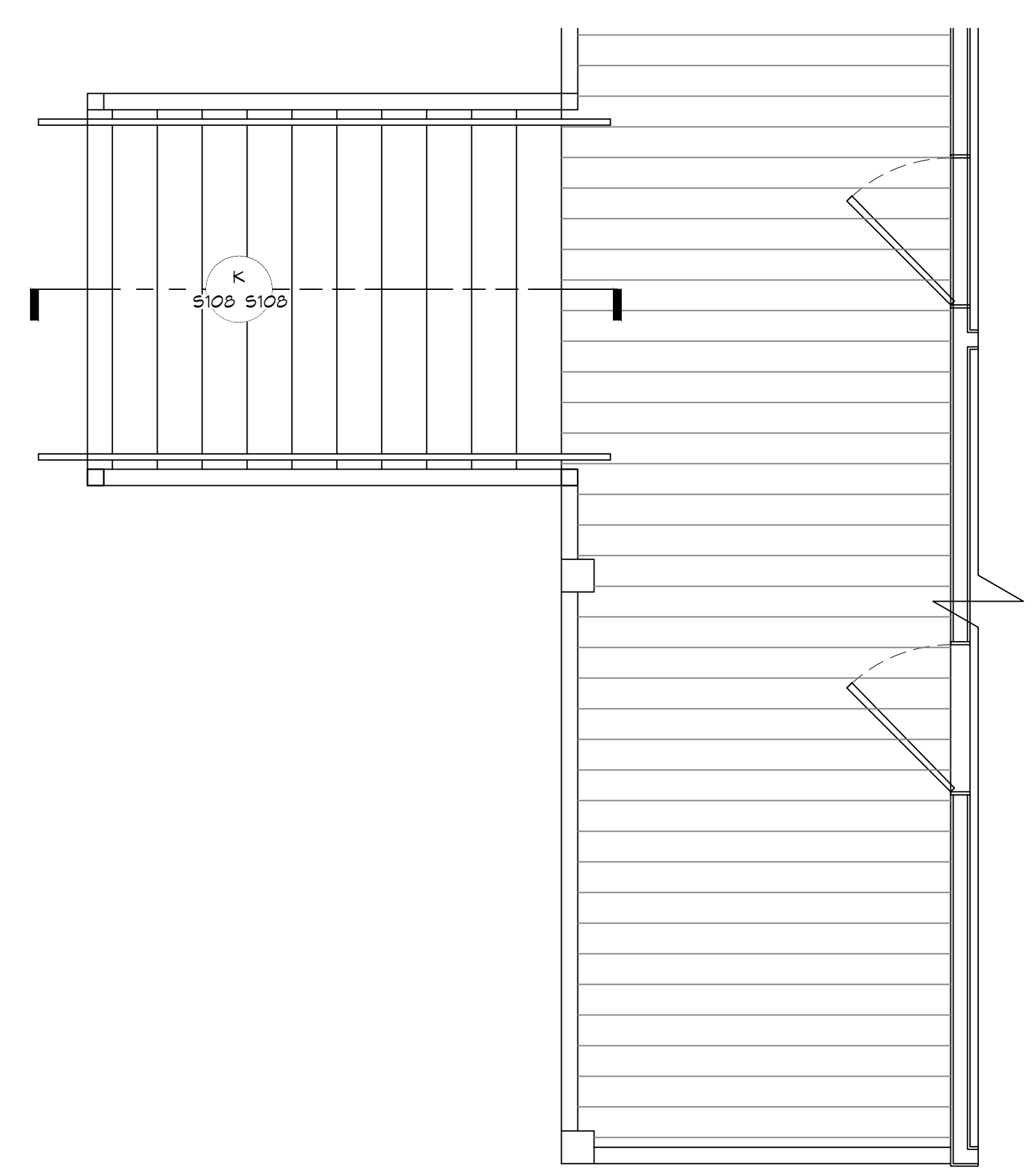
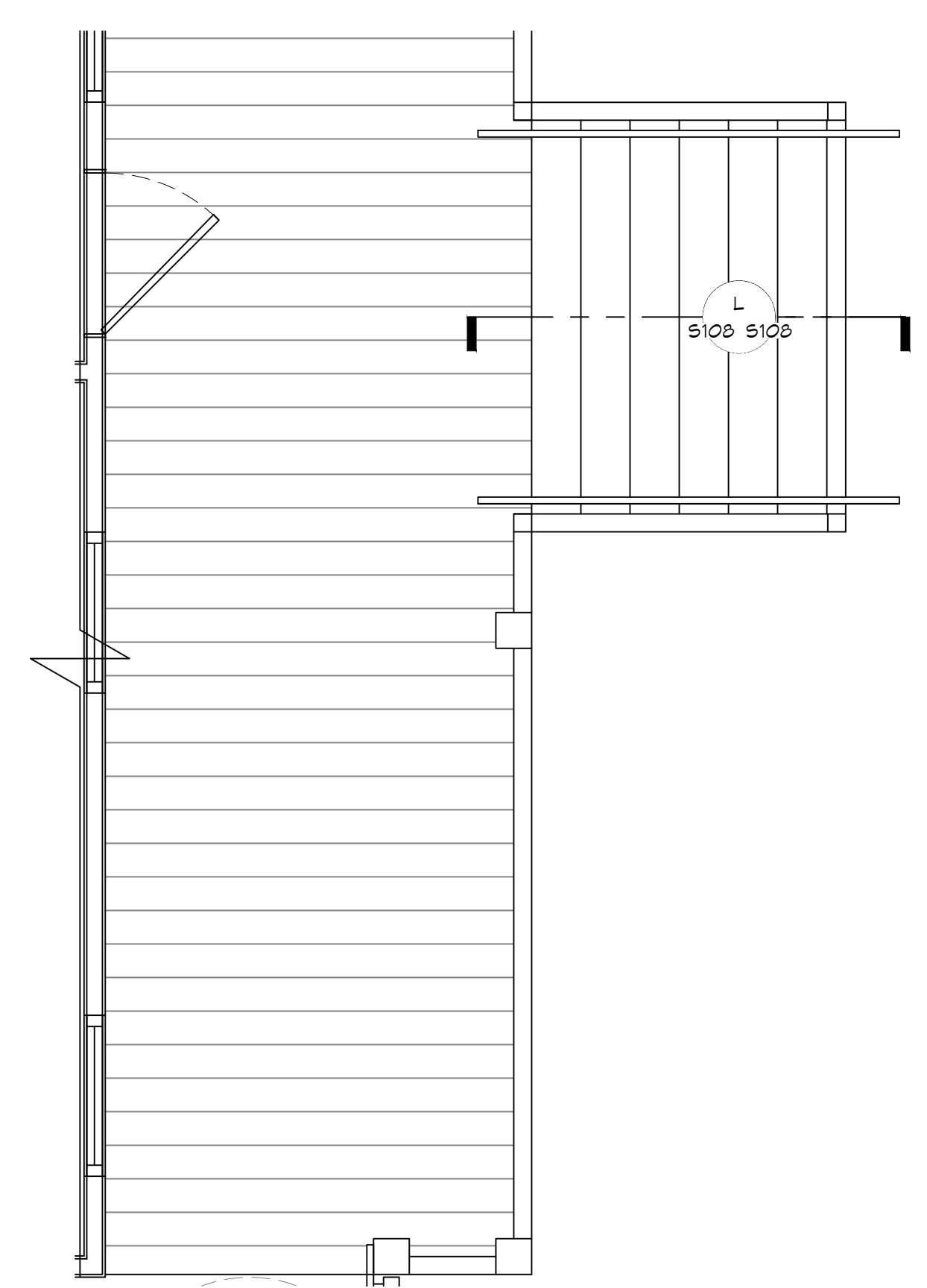


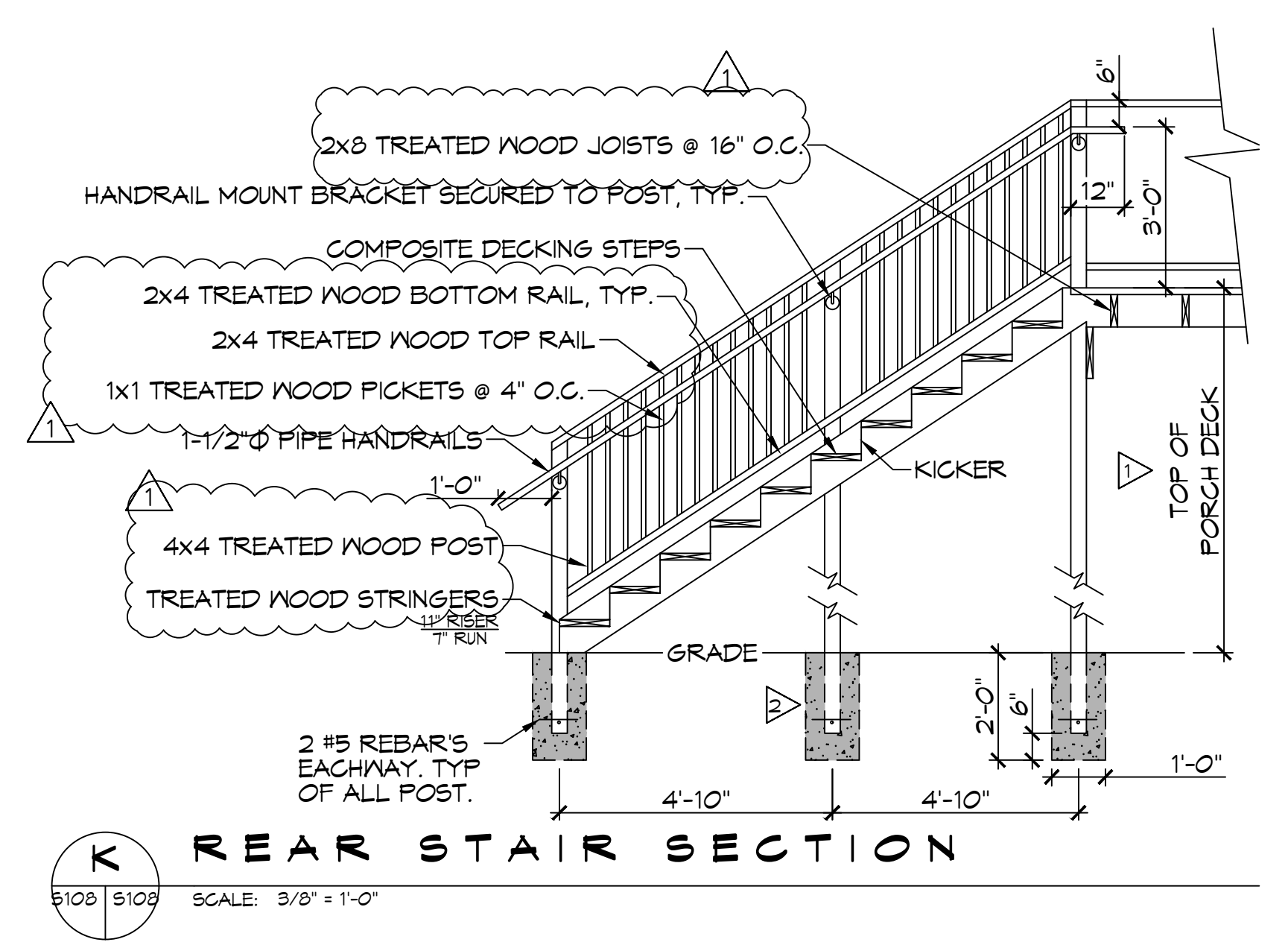
FILE NAME: J:\1 - Dammon\2022\19 - ADA Stair for Station 19 - ADA Stair for Station 19.dwg DATE: 05/16/2022 4:28:00 PM USER: brian.mistich



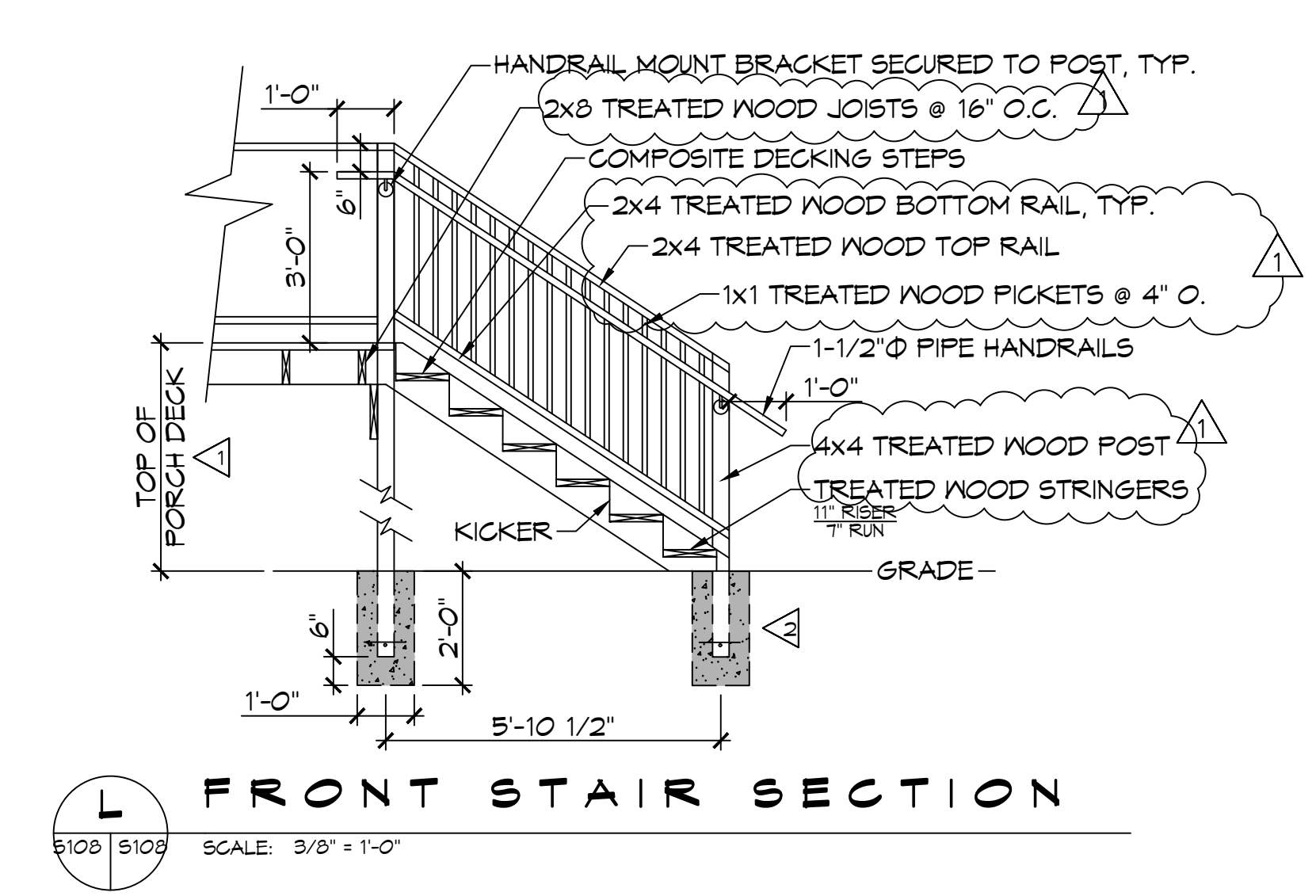
25 BACK PORCH PLAN VIEW
SCALE: 3/8"=1'-0"



26 FRONT PORCH PLAN VIEW
SCALE: 3/8"=1'-0"



K REAR STAIR SECTION
SCALE: 3/8"=1'-0"



L FRONT STAIR SECTION
SCALE: 3/8"=1'-0"

- GENERAL NOTES**
- △ FIELD VERIFY HEIGHT TO MATCH BUILDING
 - △ 4000 PSI CAST IN PLACE CONCRETE FOOTING

DAMMON ENGINEERING, INC.
LOUISIANA & MISSISSIPPI
www.dammonengineering.com
info@dammonengineering.com
PH: 985.649.8832
Chief Engineer: Brian Mistich, PE
554 Old Spanish Trail
Stell, LA 70458

#	DESCRIPTION	DATE
1	1 S107 - Revised Treated Lumber for Framing Std	05/30/2022



ST. TAMMANY FIRE PROTECTION DISTRICT NO. 1
FIRE STATION 19
57047 ALLEN ROAD
STELL, LOUISIANA 70461
JOB No: 2456
DATE: 05-16-2022
DRAWN BY: CKD
CHECKED BY: BAM

SHEET TITLE:
ADA STAIR PLAN
DRAWING NUMBER:
S108
SHEET No: 13 of 30