

**PANEL SCHEDULE**

PANEL:		MDF		VOLTAGE:		240/120V, 400A, 1Φ, 3W W/MB							
LOCATION:		BLDG. WALL EXTERIOR NEAR GENERATOR		ENCLOSURE:		NEMA 3R SURFACE MOUNTED W/ EQUIP. GND BAR SQ D TYPE GO LOAD CENTER							
FEEDER SOURCE:		ATS											
CKT NO	THHN WIRE SIZE	LOAD DESCRIPTION	BREAKER		LOAD (kva)	AΦ	BΦ	LOAD (kva)	BREAKER		LOAD DESCRIPTION	THHN WIRE SIZE	CKT NO
			AMP	POLE					POLE	AMP			
1	4/0	PP1	200	2	29.9			7.7	2	200	PP2	4/0	2
3					26.6			11.5					4
5	-	SPARE	20	1	-			-	-	-	SPACE	-	6
7	-	SPARE	20	1	-			-	-	-	SPACE	-	8
9	-	SPACE	-	-	-			-	-	-	SPACE	-	10
11	-	SPACE	-	-	-			-	-	-	SPACE	-	12

SOLID NEUTRAL NEUTRAL WIRE (N)

TOTAL CONNECTED LOAD (kva) = 75.7

GROUND BUS GROUND WIRE (G)

A PHASE = 37.6 kva    B PHASE = 38.1 kva

**PANEL SCHEDULE**

PANEL:		PP1		VOLTAGE:		240/120V, 200A, 1Φ, 3W W/MLO							
LOCATION:		UTILITY CLOSET		ENCLOSURE:		FLUSH MOUNTED W/ EQUIPMENT GND BAR SQ D TYPE GO LOAD CENTER							
FEEDER SOURCE:		MDP											
CKT NO	THHN WIRE SIZE	LOAD DESCRIPTION	BREAKER		LOAD (kva)	AΦ	BΦ	LOAD (kva)	BREAKER		LOAD DESCRIPTION	THHN WIRE SIZE	CKT NO
			AMP	POLE					POLE	AMP			
1	#12	CREW QTR & PORCH OUTLETS, PORCH LIGHTS	20	1	1.4			1.5	1	20	CREW QTR OUTLETS & LIGHTS	#12	2
3	#12	DEDICATED OUTLETS, COMM	20	1	0.4			0.4	1	20	DEDICATED OUTLETS, COMM	#12	4
5	#12	CAPTAIN QTR OUTLETS & LIGHTS	20	1	1.7			1.4	1	20	CAPTAIN QTR & DAYROOM OUTLETS & PORCH LIGHTS	#12	6
7	#12	DAYROOM OUTLETS & LIGHTS	20	1	1.4			1.1	1	20	DEDICATED, REFRIG	#12	8
9	#12	DEDICATED, REFRIG	20	1	1.1			1.1	1	20	DEDICATED, REFRIG	#12	10
11	#12	KITCHEN OUTLET & LIGHTS	20	1	1.5			1.4	1	20	DISHWASHER & GARBAGE DISPOSAL	#12	12
13	#12	WELL HOUSE	20	1	1.7			0.6	1	20	KITCHEN OUTLETS	#12	14
15	#12	ULTRA-AIRE XT155H DEHUMIDIFIER	20	1	1.0			1.4	1	20	GAS RANGE	#12	16
17	#12	RANGE HOOD CONTROLS *	15	1	1.1			1.1	1	15	RANGE HOOD LIGHTS *	#12	18
19	#12	ATTIC FAN AND OUTLET	20	1	1.5			1.3	2	30	WELL PUMP **	#10	20
21	#12	WASHING MACHINE	20	1	.7			1.3	2	30	LAUNDRY DRYER	#10	22
23	#6	AHU, 5TON, 7.5 kw HEAT	45	2	5.3			3.6	2	30	5 TON CONDENSER	#6	24
25					5.3			3.6					26
27	#10	WATER HEATER	30	2	2.2			4.1	2	60			28
29					2.2			4.1					30

SOLID NEUTRAL NEUTRAL WIRE (N)

TOTAL CONNECTED LOAD = 56.5 kva

GROUND BUS GROUND WIRE (G)

AΦ = 29.9 kva    BΦ = 26.6 kva

\* NOTE : RANGE HOOD WIRING SHALL BE HIGH TEMPERATURE RATED AND INSTALLED IN EMT OR FLEX CONDUIT PER MANUFACTURERS RECOMMENDATION.

\*\* INSTALL BREAKER TO MATCH EQUIPMENT INSTALLED.

**PANEL SCHEDULE**

PANEL:		PP2		VOLTAGE:		240/120V, 200A, 1Φ, 3W W/MLO							
LOCATION:		ENGINE BAY		ENCLOSURE:		FLUSH MOUNTED W/ EQUIPMENT GND BAR SQ D TYPE GO LOAD CENTER							
FEEDER SOURCE:		MDP											
CKT NO	THHN WIRE SIZE	LOAD DESCRIPTION	BREAKER		LOAD (kva)	AΦ	BΦ	LOAD (kva)	BREAKER		LOAD DESCRIPTION	THHN WIRE SIZE	CKT NO
			AMP	POLE					POLE	AMP			
1	#12	OUTLETS AND EXHAUST FAN	20	1	1.1			1.1	1	20	GAS FIRED HEATER	#12	2
3	#12	OUTLETS	20	1	0.7			1.1	1	20	GAS FIRED HEATER	#12	4
5	#12	LIGHTS	20	1	1.0			0.2	1	20	DEDICATED WEATHER-PROOF RECEPTACLE GENERATOR (BLOCK HEATER)	#12	6
7	#12	JUNCTION BOX (# 2-WAY SWITCH) FOR ROLLUP DOOR IN ENGINE BAY	20	1	0.9			0.2	1	20	GENERATOR BATTERY CHARGER	#12	8
9	#12	JUNCTION BOX (# 2-WAY SWITCH) FOR ROLLUP DOOR IN ENGINE BAY	20	1	0.9			-	1	20	SPARE	#12	10
11	#12	JUNCTION BOX (# 2-WAY SWITCH) FOR ROLLUP DOOR IN ENGINE BAY	20	1	0.9			1.8	1	30	ICE MAKER **	#10	12
13	-	SPARE	-	-	-			-	1	20	SPARE	#12	14
15	#12	SEWAGE TREATMENT	20	1	1.5			-	1	20	SPARE	#12	16
17	-	SPACE	-	-	-			-	1	20	SPARE	#12	18
19	#10	BIG ASS FAN	15	2	1.2			0.5	2	10	ENGINE BAY EXHAUST FAN **	#12	20
21					1.2			0.5					22
23	-	SPACE	-	-	-			1.0	1	20	AIR VAC EXHAUST REMOVAL CONTROLLER	#12	24
25	-	SPACE	-	-	-			1.7	1	20	AIR VAC EXHAUST REMOVAL ***	#12	26
27	-	SPACE	-	-	-			1.7	1	20	AIR VAC EXHAUST REMOVAL ***	#12	28
29	#12	SPARE	20	1	-			1.7	1	20	AIR VAC EXHAUST REMOVAL ***	#12	30

SOLID NEUTRAL NEUTRAL WIRE (N)

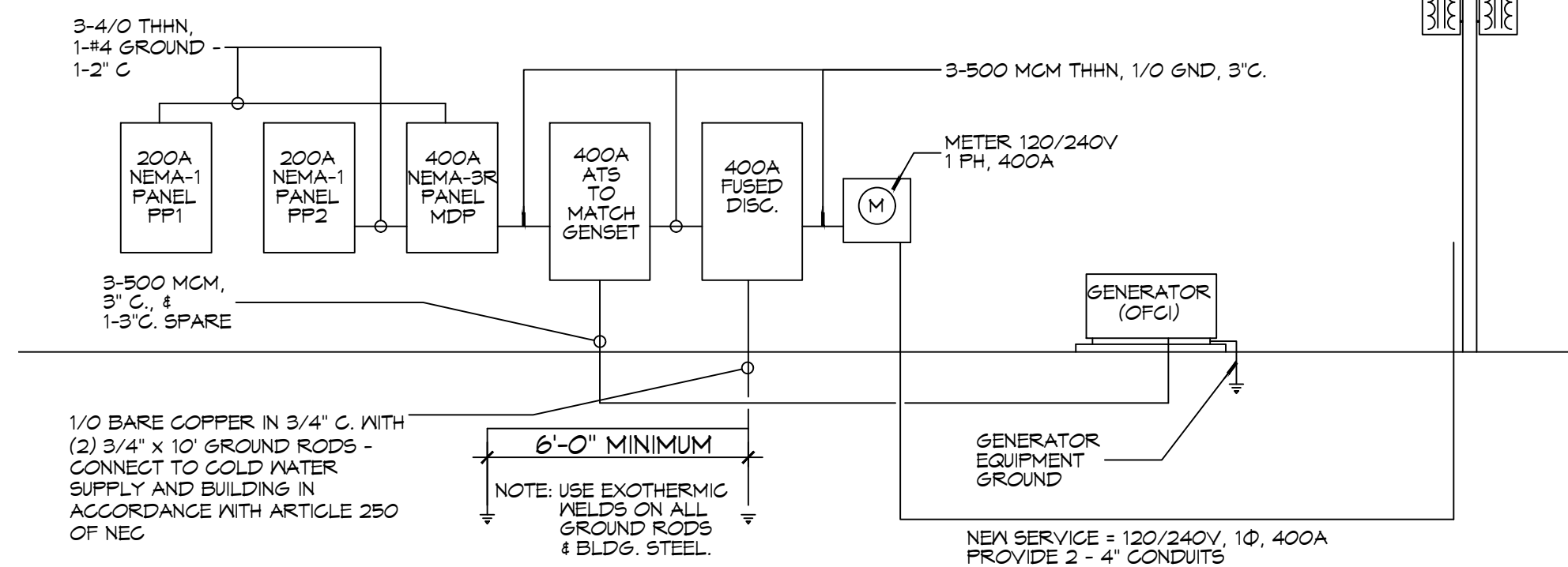
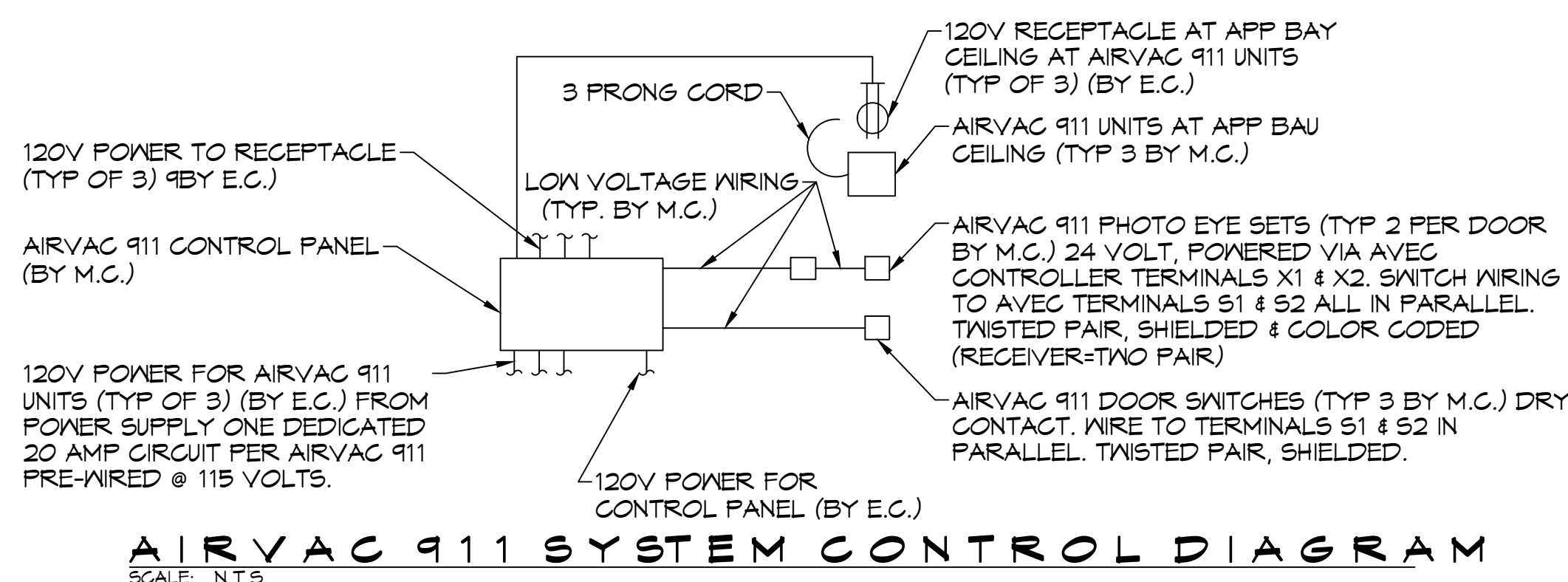
TOTAL CONNECTED LOAD = 19.2 kva

GROUND BUS GROUND WIRE (G)

AΦ = 7.7 kva    BΦ = 11.5 kva

\*\* INSTALL BREAKER TO MATCH EQUIPMENT INSTALLED.

\*\*\* WIRE OUTLET THRU CONTROL PANEL

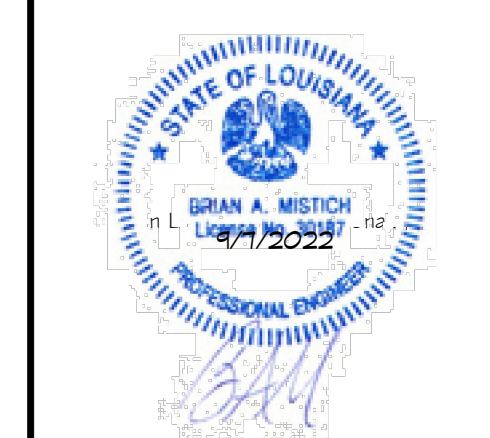


**DAMMON ENGINEERING, INC.**  
LOUISIANA & MISSISSIPPI

www.dammonengineering.com  
info@dammon.com  
PH: 985-649-5832

Chief Engineer: Brian Mistich, PE  
Senior Engineer: Sidell Frail  
Suldrill, LA 70488

REVISIONS	DATE	DESCRIPTION
1	7/29/2022	Revised PP2
2	09/07/2022	Relocated Well House and Treatment Plant



ST. TAMMANY FIRE PROTECTION DISTRICT NO. 1  
**FIRE STATION 19**

57047 ALLEN ROAD  
SULDRILL, LOUISIANA 70461  
JOB No: 2495  
DATE: 08-16-2022  
DRAWN BY: C&D  
CHECKED BY: BAW

SHEET TITLE:  
PANEL SCHEDULE AND ONE LINE DIAGRAM

DRAWING NUMBER:

AS-BUILT  
1-31-24  
**E104**