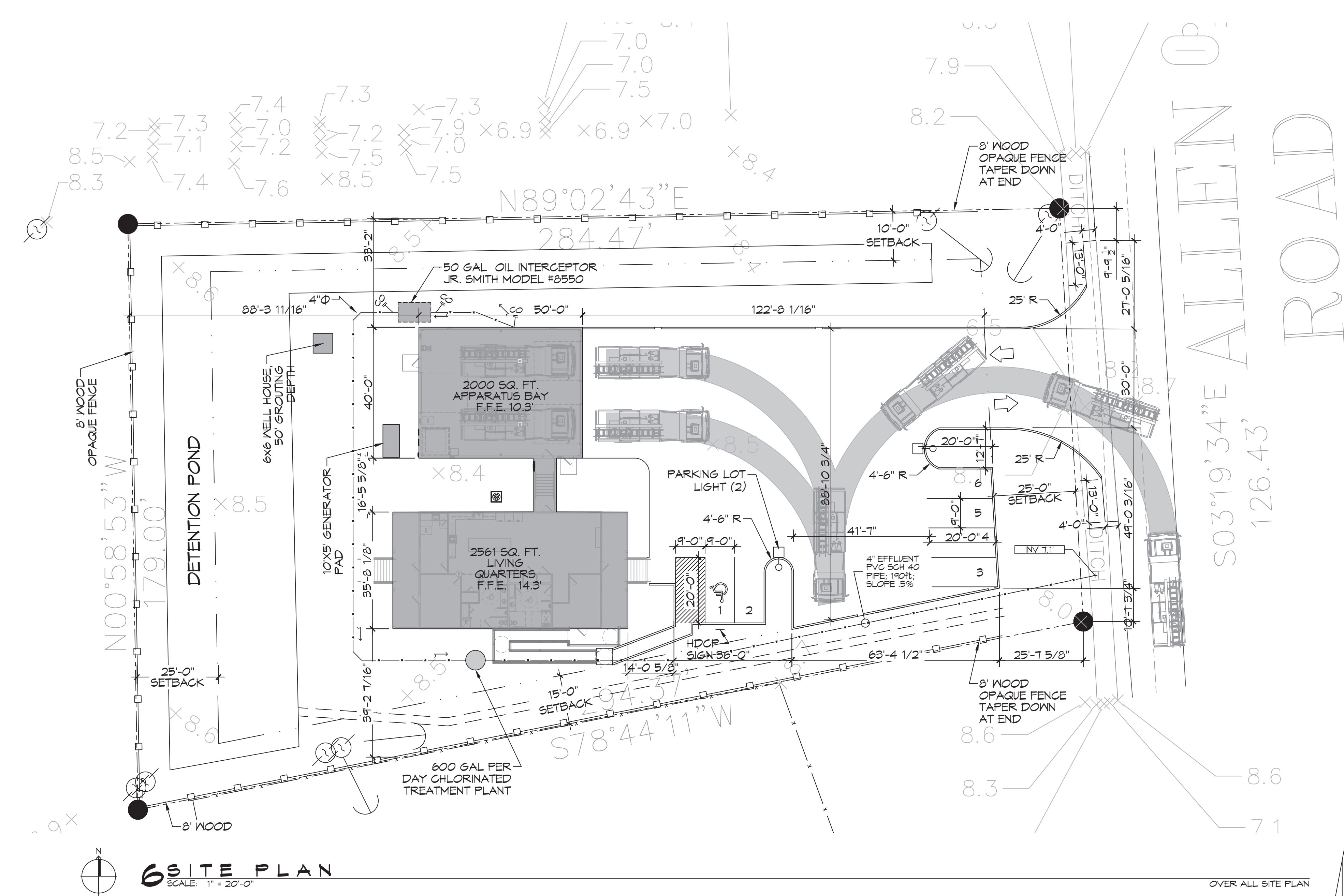
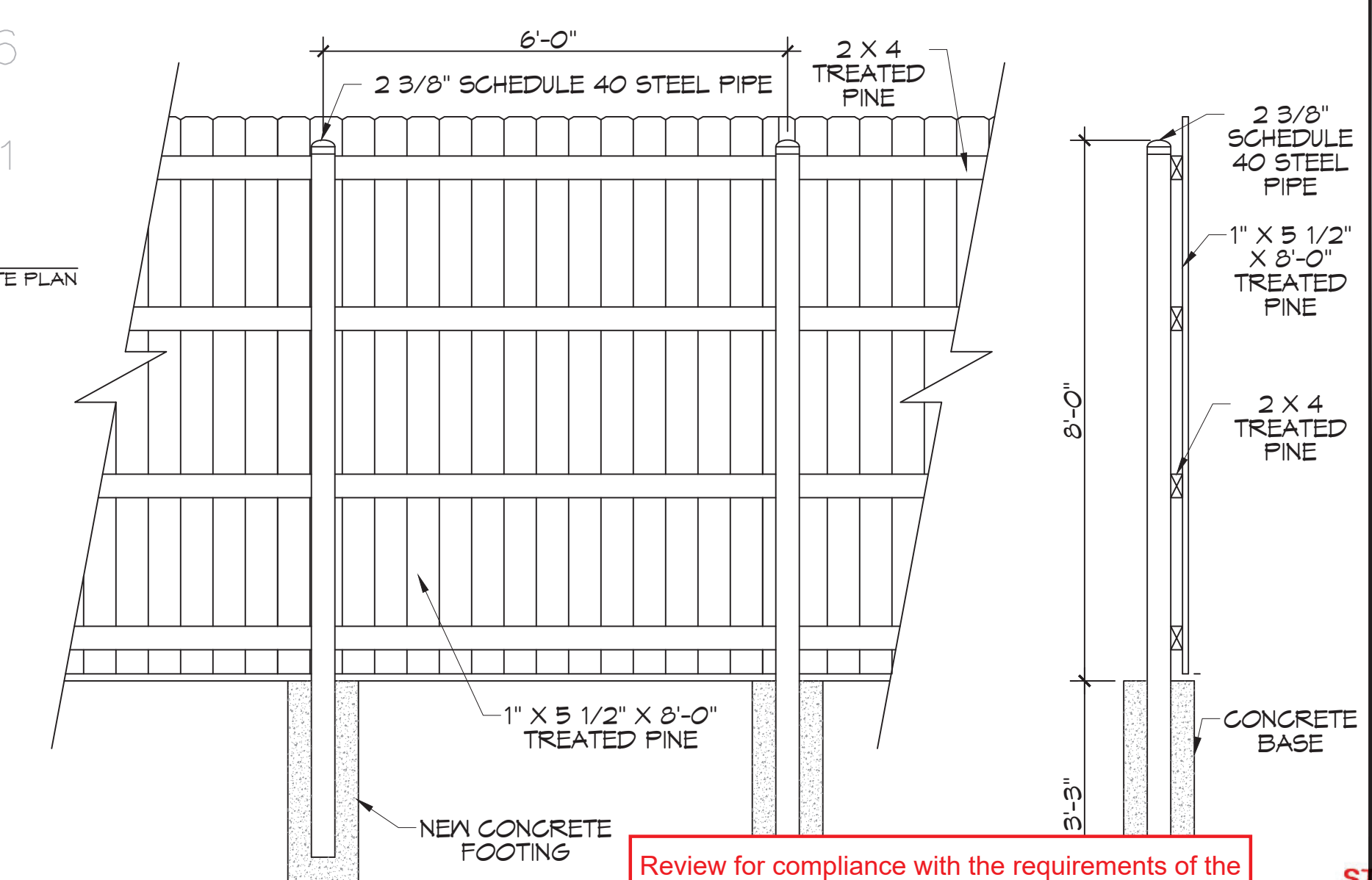


FILE NAME: \\S:_Government\2456 - Allen Road Fire Station 19\Drawings\General\Drawings\2456 - Site Plan.dwg PLOT DATE: & TIME: Monday, May 16, 2022 8:20:59 AM



6 SITE PLAN
SCALE: 1" = 20'-0"

OVER ALL SITE PLAN



OPAQUE FENCE
SCALE: N.T.S.

PARKING
PROVIDED SPACES: 5 INCLUDING 1 HDCP = 6
PLANING
LOT: 24 AND 30 ZONED: FF-1 PUBLIC FACILITY
FLOOD ZONE
ZONE "A10"
FINISHED FLOOR ELEVATIONS
APPARATUS BAY F.F.E. = 10.3' BASE FLOOD ELEVATION FOR LIVING QUARTERS = 13.0' FINISHED FLOOR ELEVATION FOR LIVING QUARTERS = 14.3'
POTABLE WATER WELL
MINIMUM SUPPLY 5 GPM. 50' GROUTING DEPTH
ONSITE WASTEWATER DISPOSAL
600 GAL PER DAY CHLORINATED TREATMENT PLANT - SEE SPECS.
SITE DRAINAGE
DRAINAGE STUDY AND DESIGN BY J.V. BURKES.
LANDSCAPING
LANDSCAPING DESIGN BY AL BARGIA.

REVISIONS	DATE
# DESCRIPTION	

SEAL:

ST. TAMMANY FIRE PROTECTION DISTRICT No. 1
FIRE STATION 19

57047 ALLEN ROAD
SLIDELL, LOUISIANA 70461

JOB No: 2456 DATE: 05-16-2022
DRAWN BY: C&D CHECKED BY: JWS

SHEET TITLE:
SITE PLAN

Review for compliance with the requirements of the Louisiana State Uniform Construction Code (LSUCC) in accordance with Act 12 of the 2005 First Extraordinary Session of the Louisiana Legislature has been performed on behalf of the jurisdiction in which this project is located.

DRAWING NUMBER:
REVIEWED FOR STATE FIRE MARSHAL AS PER REVIEW LETTER BY: ERIC M. RILEY ARCHITECT

Eric M. Riley

DAMMON ENGINEERING, INC.
LOUISIANA & MISSISSIPPI

Chief Engineer: Brian Watch, PE
554 Old Spanish Trail
Slidell, LA 70468
www.dammonengineering.com
info@dammonengineering.com
PH: 985.649.9532