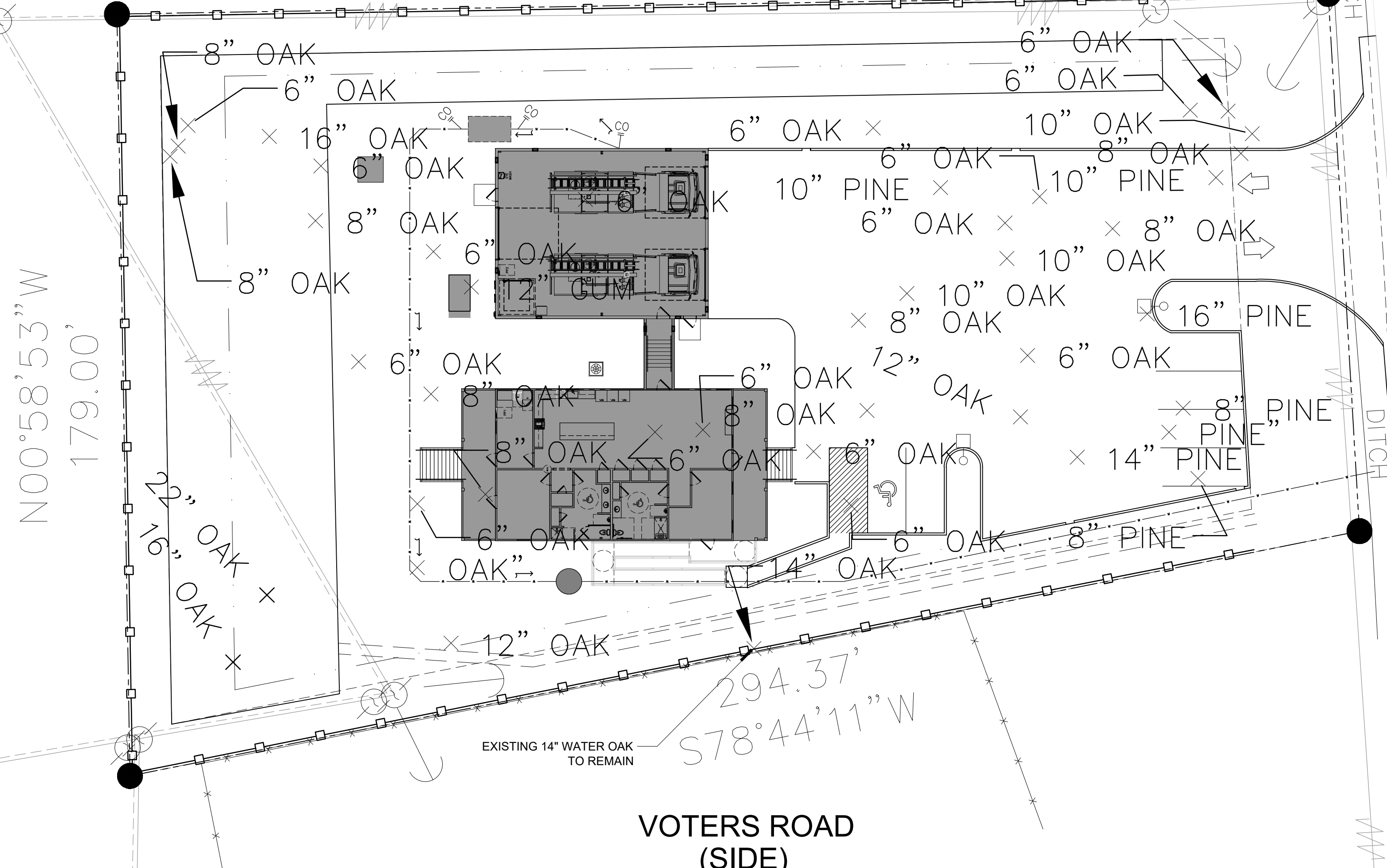


US HIGHWAY 190 EAST
(SIDE)

N89°02'43"E
284.47'



ALLEN ROAD

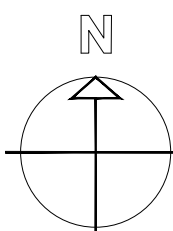
S03°19'34"E
126.43'

VOTERS ROAD
(SIDE)

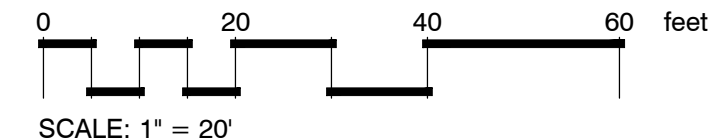
N00°58'53"W
179.00'

EXISTING 14" WATER OAK
TO REMAIN

294.37'
S78°44'11"W



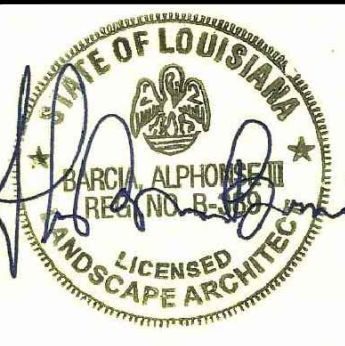
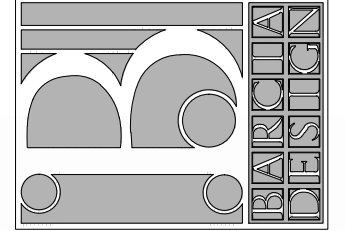
TREE REMOVAL PLAN



LANDSCAPE CALCULATIONS

ALLEN ROAD (ROW)		
25' LANDSCAPE BUFFER	- 126.43'/30= 4.3 TREES	4A TREES AND 4B TREES PROVIDED
4A TREES AND 4B TREES REQUIRED		12 SHRUBS PROVIDED
US HIGHWAY 190 EAST (SIDE)		
25' LANDSCAPE BUFFER	- 274.47'/30=9.1 TREES	9A TREES AND 9B TREES PROVIDED
9A TREES AND 9B TREES REQUIRED		
REAR PROPERTY LINE (WEST SIDE)		
10' LANDSCAPE BUFFER	- 179/30=5.9 TREES	5A TREES AND 5B TREES PROVIDED
5A TREES AND 5B TREES REQUIRED		
VOTERS ROAD (SIDE)		
10' LANDSCAPE BUFFER	- 294.37'/30=9.8 TREES	7A TREES AND 9B TREES PROVIDED
9A TREES AND 9B TREES REQUIRED		2 EXISTING TREE CREDIT

ALPHONSE BARCIA III
LANDSCAPE ARCHITECT LLC.
562 CLAYTON COURT
SLIDELL, LOUISIANA 70461
BARCIADESIGNS@GMAIL.COM
(985) 960-0429



8-29-2022

THIS DRAWING IS AN INSTRUMENT OF SERVICE, AND THE PROPERTY OF THE ARCHITECT AND MAY BE USED ONLY ON THE PROJECT NAMED HEREIN. THIS DRAWING SHALL NOT BE REPRODUCED, COPIED OR USED IN WHOLE OR PART WITHOUT WRITTEN PERMISSION OF THE ARCHITECT. ANY USE IS A VIOLATION OF FEDERAL AND STATE COPYRIGHT STATUTES.

FIRE DISTRICT #1

ALLEN ROAD
St. Tammany Parish - Louisiana 70461

Sheet Title: Tree Removal Plan

JOB No.:

SCALE: AS SHOWN

DRAWN BY: AB3

CHECKED BY: AB3

SHEET:

LS-0

REV.

DATE: AUGUST 29TH, 2022